

BLANKETS **LINENS**
WELCOME, FRESHMAN
EGOLF'S
 DRY GOODS AND NOTIONS
LINGERIE **HOSIERY**

THE KEEFER HARDWARE
 200 West College Avenue
 Extends a Cordial Welcome to All
 Students and Faculty Members
 We invite you to visit our store where you
 will always receive courteous attention
 Delivery Service Phone 2451

Rea & Derick, Inc.
 The Rexall Cut Rate Drug Store
 121 S. Allen St. Next to Peoples Nat'l Bank
COOLEST SPOT IN TOWN
 Completely Air Conditioned

Enlarged, Modernized
 Fountain and Luncheon Department
 Better food—Better service

Parker and Parkette Pens and Pencils
 \$1.25 to \$10.00

STATIONERY
 Plain and with College Seal

WHITMAN'S AND OTHER CANDY
 Fresh every week

TOILETRIES
 Hudnut—Yardley—Lentheric
 Dorothy Gray—Lucien Lelong

PIPES AND TOBACCO
 Kaywoodie—Yellow Bole—Grabow
 Frank Medico—Londonshire
 Cut prices on Tobacco

Friendly Service and Low Prices
 Our friendly service is what you are accustomed to at your
 corner drug store back home and our prices—save you money

REA & DERICK, Inc.
 Come in and Get Acquainted
 COOLEST SPOT IN TOWN—AIR CONDITIONED

5 Million PWA Grant To Erect 9 Buildings

Excavation To Start This Fall

Construction To Include Liberal
 Arts, Chemistry-Physics,
 Library, Others

(Continued from page one)
 by 67 feet; approximate cost, \$130,000.
 Biological science: three stories of
 brick and limestone, 202 feet by 65
 feet; estimated cost \$560,000.
 Electrical Engineering: three stor-
 es of brick and limestone 200 feet
 by 50 feet with a rear central wing

THE BELL

Student Literary and
 Opinion Magazine

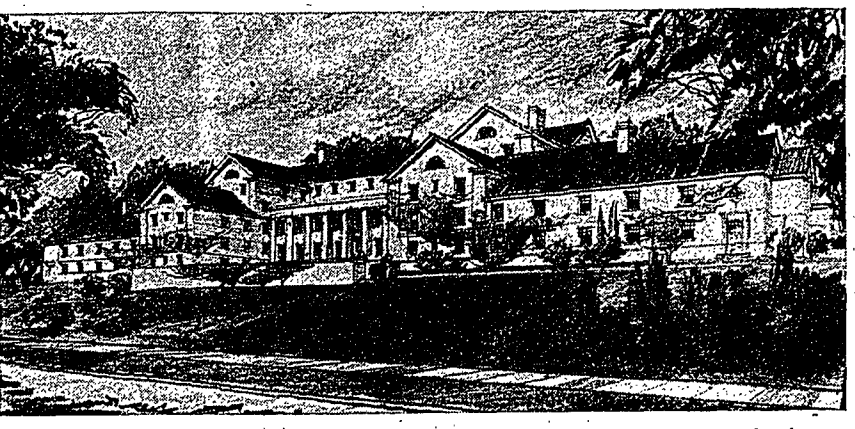
brings you

SHORT STORIES
 ARTICLES
 VERSE

by
 The Best Student
 Writers on the
 Campus

Subscribe Now!
 \$1.00

Work Starts On New Women's Dormitory



Above is the architect's drawing of the new Frances Atherton Hall, dormitory for women. Expected to be completed for the fall of 1938, this new dormitory will house 504 girls. Unlike the other new buildings that will adorn State's campus in the next few years, Frances Atherton Hall is not financed by federal money, but is being built from money floated in a bond issue by the College Board of Trustees. It will be located at the corner of East Campus Drive and E. College Ave. Ground for the structure was broken early in the summer.

two stories high, 115 feet by 75 feet. Approximate cost, half a million dollars.

Chemistry and Physics: this will represent the greatest expenditure for an individual unit, the cost approximating a million dollars. It will be three stories of brick and limestone, 104 feet by 71 feet, flanked by a three-story end wing, 92 feet by 72 feet.

Agricultural Engineering: two-story structure of brick and limestone 116 feet by 45 feet, flanked by a one-story shop wing, 100 feet by 45 feet. Estimated cost \$110,000.

These enlargements will fill a long-felt need, and will permit matriculation of hundreds of students who annually have to be refused admission because of limited facilities.

In announcing the State Authority's plans today, Colonel A. S. Jane-way, executive director of the authority, paid high tribute to the exalted place the Pennsylvania State College holds in the world's scientific and cultural advancement.

He pointed out that Penn State, as the commonwealth's land grant college, provides trained men and women for Pennsylvania's commerce and industry, its schools, churches and homes; and that all state interests

are benefitted by the research activities of its staff, and the extension program of its faculty.

P.S.C.A. Announces 3 As New Secretaries

Three secretaries of the Penn State Christian Association have resigned

to accept other position and three new secretaries have succeeded them, Harry W. Seamans, general secretary announced recently.

The new secretaries are John F. Putney who will succeed Charles P. Hogarth as associate secretary, Ruth B. Mabee who will succeed Elizabeth Z. Farrow as associate secretary, and Mildred E. Dunkleberger who will

Headquarters for
CORRECT APPAREL
 For Every Occasion
KALIN'S DRESS SHOP
 144 SOUTH ALLEN STREET

MARTIN & KREAMER
BARBER SHOP
 Extends Its Welcome to the Class of '41
 Opposite Front Campus on College Avenue

Hiland Shop
LAUNDERERS & DRY CLEANERS
 The best place in town to have your Cleaning and Pressing done
 220 1/2 S. Allen St. Dial 3171

WELCOME, CLASS OF 1941
 Try Our Sticky Cinnamon Rolls

THE ELECTRIC BAKERY
 1/2 Block South of Post Office

Johnston's Motor Coach Line, Inc.
 THROUGH EXPRESS SERVICE DAILY

Read Down			Read Up		
AM	PM	PM	AM	PM	PM
8:00	2:05	7:00	11:10	5:45	9:45
8:15	2:20	7:15	10:55	5:30	9:30
8:20	2:20	7:20	10:50	5:20	9:25
8:30	2:35	7:30	10:40	5:15	9:15
	2:40	7:35	10:30		9:55
	3:00	7:55	10:15		8:40
	3:12	8:00	10:03		8:30
8:50				4:45	
9:15	3:25	8:15	9:50	4:15	8:20
9:30	3:45	8:30	9:40	4:05	8:05
9:38	3:53	8:43	9:26	3:52	7:52
9:40	3:55	8:45	9:25	3:50	7:50
9:45	4:00	8:50	9:20	3:45	7:45
10:00	4:10	9:00	9:10	3:35	7:35
10:30	4:45	9:35	8:30	3:00	7:00

SUNDAY SCHEDULE USED ON ALL HOLIDAYS

succeed Gertrude I. Mobus as office secretary.
 Hogarth will study in Yale University, Miss Farrow will study in Columbia University, and Miss Mobus will be located in Washington.
 Putney comes here from Washington University in St. Louis where he was engaged in similar work. Miss Mabee holds a wide experience in social service work, and Miss Dunkleberger remains on the campus, having been here since September, 1936 in the U. S. Department of Agriculture, Bureau of Entomology.

- THE NITTANY NEWS STAND**
 110 West College Ave.
 + + +
 Tobacco Cigars
 Cigarettes
 Smokers' Supplies
 Magazines
 Periodicals
 Confectionery
 + + +
 NEW YORK TIMES
 Daily and Sunday
 NEW YORK HERALD TRIBUNE
 Daily and Sunday
 NEW YORK MIRROR
 Daily and Sunday
 NEW YORK NEWS
 Daily and Sunday
 THE PITTSBURGH PRESS
 Daily and Sunday
 PITTSBURGH POST GAZETTE
 Morning
 PITTSBURGH SUN-TELEGRAPH
 Daily and Sunday
 BALTIMORE SUN
 Sunday Only
 WILLIAMSPORT GRIT
 Sunday Only
 PHILADELPHIA BULLETIN
 Evening
 PHILADELPHIA RECORD
 Morning
 PHILADELPHIA INQUIRER
 Morning and Sunday
 PUBLIC LEDGER
 Morning, Evening and Sunday
 ALTOONA MIRROR
 Evening
 PENN STATE COLLEGIAN
 Monday and Thursday Evenings
 FROTH
 Monthly
 OLD MAIN BELL
 Monthly
 HARRISBURG EVENING NEWS
 Daily
 + + +
THE NITTANY NEWS STAND
 110 West College Ave.

WELCOME!
Class of '41
New COLLEGE DINER
 126 West College Avenue
 Always Open Always Open