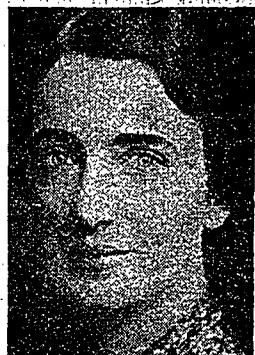


4 New Deans Appointed



LAURA W. DRUMMOND Director of Home Economics



HARVEY P. HAMMOND Dean of the School of Engineering



CARL P. SCHOTT Dean of the School of Physical Education and Athletics



MARION R. TRABUE Dean of the School of Education

1,405 FRESHMEN WILL ARRIVE WEDNESDAY

Your College Newspaper

This first issue of the Collegian has been sent to every freshman as an introduction to Penn State's newspaper.

As a newspaper it has performed its function of keeping students up to the minute on college affairs for fifty years.

Published twice a week, it is the object of much care and hard work. It is alive, alert, and active.

During the last academic year it demonstrated these qualities, synonymous with any good newspaper, by excellent coverage, scooping metropolitan newspapers and the local town daily in news that was alive both for students and the world-at-large.

The Collegian, so far as it can be determined, was the first newspaper to carry the news of the crash of the German dirigible Hindenburg.

The Collegian told of the appointment of Dr. Carl P. Schott, Bezdek's successor ten days before his appointment was announced, and then gleefully hastened to be the first to confirm it as the rest of the newspaper world looked on with no resort but to wait.

And still earlier in the year the Collegian grabbed national news by carrying the first word that the body of the kidnapped Mattson boy had been found near Tacoma, Washington.

It is with such a record that the Collegian carries to you the proposal of subscription. It knows that it is offering the best that can be given in college newspapers, and it knows that you, as a freshman, will want to subscribe to your own newspaper.

It is a concise, interesting record of student life at Penn State that parents, as well as students, will enjoy and welcome.

As a chronicle of events to come it will contain announcements of all meetings, athletic contests, examination schedules, and all manner of vital information. The Collegian thus serves as a medium of drawing students together.

The Collegian will be a vital and satisfying part of your college experience.

Twice a week through the school year for \$2.50. Mail your subscription to the Collegian, State College, Pa., or sign up with a solicitor immediately upon your arrival.

Freshman Scholarship Gets Recognition From Honoraries

2 Fraternities Honor First-Year Students; Upperclass Groups In Existence; 2.5 Average Required

There are two honorary fraternities for freshmen with scholastic ambitions, one for men and one for the women.

Phi Eta Sigma awards membership to all freshman men who at the end of their first semester have attained a 2.5 scholastic average or better.

Alpha Lambda Delta, sister organization of Phi Eta Sigma, honors high standing freshman women.

Honorary fraternities usually set up a minimum standard which a student must attain before he is considered for membership.

Fulfilling the minimum requirement does not automatically make the student a member of the society.

Nearly every branch of collegiate activity—scholarship, journalism, dramatics, debating, or a departmental interest—has its honoraries which usually elect members from the junior and senior classes on the basis of their achievements.

When underclassmen have been outstanding in the field and the society permits, exception is made to the custom of excluding freshmen and sophomores.

Elections are in most cases held twice a year, once in the fall and once in the spring.

For freshmen with scholastic ambitions the recognition of scholarship in all schools is Phi Kappa Phi, which was established at Penn State in 1900.

To become eligible for election a student must be in the upper twentieth of his class on the basis of seven semesters and fulfill the further condition that his average be at least 2.4.

Sigma Delta Chi, which was installed three years ago, is a professional journalism society offering membership to students majoring in journalism who intend to follow that line of work.

Alpha Theta Epsilon is the women's journalistic society, while Alpha Delta Sigma encourages proficiency in advertising.

For work in debating, Delta Sigma Rho is the outstanding honorary, awarding membership to selected varsity debaters at the end of their junior year.

Delta Alpha Delta honors women debaters and its membership is not restricted to any particular class. Purple Quill is a local literary

(Continued on page six)

Men's Fraternity Groups To Pledge 500 Freshmen

Rushing Will Start On September 9; Rules Set

On Thursday, September 9, the annual 10-day rushing season will begin, during which approximately 500 of the class of '41 will be pledged to the 52 various men's fraternities.

To prevent unfairness which might arise from one fraternity toward another or toward the prospective pledges, the activities of both the fraternities and the rushees are regulated during rushing season by a rushing code drawn up each year by a fraternity representative body, the Interfraternity Council.

This code states just how a fraternity may rush, bid, and pledge new members and is revised each year as possible improvements are seen.

The 1937 season will get under way immediately after the first councilor's meeting on Wednesday night, September 8, when the rushees, prospective pledges, receiving their date card in the Old Main Lounge.

Using these cards, the only legal way to make a date during the season is for a representative of a fraternity to sign the name of his fraternity in a space allotted for a given date.

Following the reception of the date cards there will be a "silent" period beginning at 8 o'clock in which no communication is allowed between rushees and fraternity men until the next morning, September 9, at 7:30 o'clock.

From this hour on, date cards may be filled.

First Period The first period of regulated rushing will begin Thursday morning, September 9, at 7:30 o'clock and last until the second "silent period" begins on Wednesday night, September 15, at 8 o'clock.

During this regulated rushing period the rushee is allowed only two dates with a single fraternity and only two dates a day—(1) Luncheon dates: 11:00 to 2:00 o'clock; (2) Dinner dates: 5:00 to 10:00 o'clock.

Preference Cards A second "silent period" of no fraternity-rushee communication or association will begin Wednesday night, September 15, at 8 o'clock and extend until Friday morning, September 17, at 8 o'clock.

During this period the rushee should report to the Student Union Office in Old Main on Thursday, September 16, at any time from 8:30 o'clock in the morning until 5 o'clock in the evening to obtain a preference card upon which he will signify the first three fraternities of his choice and return the card to the attendant.

Failure to obtain these cards and fill them out as directed will prohibit freshmen from being pledged for a period of thirty days.

Beginning on Friday morning, September 17, at 8 o'clock the second or "free" period of rushing will last until the evening of Sunday, September 19, at 8 o'clock.

During this period rushees are allowed in fraternity houses on Friday and Saturday from

(Continued on page four)

Heads Rushing



JOHN S. MOELLER President of the Interfraternity Council

College To Erect 9 New Buildings

5 Million Dollar P. W. A. Grant Provides Funds; Work To Start This Fall

After hanging fire for the best part of six months, the new five million dollar College building program became a certainty when Gov. George H. Earle, through the General State Authority, approved the construction from Public Works Administration money recently.

The College program will be a portion of the vast one undertaken by the Earle administration with Pennsylvania's allotment from the Federal treasury.

The capital expenditure includes nine buildings devoted to higher education and research, as follows:

Liberal Arts: three stories of brick and limestone, 170 feet by 50 feet, with a connecting wing, 61 feet by 50 feet; estimated cost, \$500,000.

Forestry: three stories of brick and limestone, 170 feet by 50 feet with an approximate cost of \$180,000.

Educational: three stories of brick and limestone, 170 feet by 50 feet; cost approaching \$300,000.

Library: three stories of brick and limestone, 269 feet by 41 feet with a four-story rear central wing, 88 feet by 64 feet; estimated, half a million.

Mineral Industrial: three stories of brick and limestone, 37 feet by 75 feet with two flanking wings one story high, each wing being 35 feet

(Continued on page five)

1,141 Male Enrollment Greatest In History; Women Number 264

Freshman Week Opens September 8 With Mass Meeting

Freshman week will open with an unofficial mass meeting in Schwab Auditorium Wednesday night, September 8, at 7:30 o'clock.

The first official Freshman Week meeting will begin at 8 o'clock the following morning, the 9th, with a general convocation meeting.

Following the welcome meeting Wednesday night, women students will be entertained at a tea in the second floor lounge of Old Main, and men students will attend counsellor meetings at places designated in the Freshman Week booklet prepared by the Penn State Christian Association, under whose auspices the entire Freshman Week program is sponsored.

Throughout the entire week until September 15, freshmen will attend a series of getting-acquainted meetings, counsellor meetings, placement tests, and registrations. Classes will begin on September 15.

The Christian Association provides

Important Items ROOMS—lists of available rooms for men are distributed at the Christian Association office, 304 Old Main, upon request.

WELCOME mass meeting in the Auditorium Wednesday, Sept. 8, at 7:30 o'clock.

RECEPTION for women in Old Main second floor lounge after mass meeting.

COUNSELORS' meetings for men after mass meeting.

HAND BOOKS may be obtained at the Christian Association office.

Freshman Handbook to each member of the class of '41. Those who have not been mailed handbooks can secure them by reporting to the Christian Association office on the third floor of Old Main.

Contained in the handbook are all rules, customs, and information pertinent to becoming oriented at college.

Lists of available rooms can be secured at the same place, and cabin parties have been arranged for both men and women.

The women may leave the McCormick Dormitory (near the postoffice) on Saturday, September 18, at 1:30 o'clock, and men will be entertained on September 26, leaving from the corner of Fairmount and Allen streets at 2:30 o'clock.

'41 Beauty Queen To Be Chosen At 'Collegian' Dance

In your haste to pack up your pencils, paper, pen, notebooks, and other implements of scholastic competition, girls, don't forget to throw a curling iron and a stomach holder-in-ner or two in the Gladstone.

For this year there will be more to the freshman girl's curriculum than can be found in a month's patient search through Mr. Hoffman's General College Catalog.

"The Most Beautiful Girl of the Freshman Class" is no title to be taken lightly; and although we hate to arouse false hopes, we are doing our part toward giving that title to some freshman lass.

All you have to do is remember what we said about curling irons and things. The scene of Miss 1941's triumph will be the annual Penn State Collegian Dance at which for the first time in college history a beauty queen will be chosen from the freshman class.

This year the Collegian Dance will be the opening social event of the 1937-38 season, falling on October 8. Playing will be Booth Watmough and his orchestra, composed of all Penn State men. Watmough's brilliant rise among local orchestras has placed him in the past year in the position of a top-ranking campus band.

Admission may be had only through the presentation of one of the tickets given free with each Collegian subscription. All freshman women who attend are eligible for the beauty contest. Tickets are not on sale.

Pens For Registration Registrar Hoffman requests that all incoming freshmen, as well as upperclassmen, bring fountain pens to Recreation hall when they register. The College does not furnish pen or ink.

(Continued on page seven)

Liberal Arts School Accepts Most; 279 In Engineering

The largest freshman class in history will begin four years of college next Wednesday when 1,405 high school graduates report to the campus for the opening of freshman week.

Included in the 1,405 total are 105 students of forestry who will spend their first year at Mont Alto, forestry division of the college. An additional 200, which swells the total to 1,605 are expected to enroll in the four undergraduate centers spread throughout the state.

264 Freshmen Women Among the 1,405 freshmen, there are listed 264 women students. Thirty-four women are registered in the centers.

The class of 1941 is the largest because of the undergraduate enrollment, inasmuch as 1,405 freshmen were admitted in 1936. Approximately 1,350 were enrolled in the class of 1939. The men's group this year is the largest in history.

Divided into the various schools, there are 253 in Agriculture, 241 in Chemistry and Physics, 377 in Liberal Arts, 77 in Mineral Industries, 279 in Engineering, 121 in the Home Economics and Industrial Education departments of the School of Education, 28 in Physical Education and Athletics, and 20 unclassified.

2 Men in Home Economics Included in the Home Economics curriculum are two men students. Last year, there was only one.

Registrar William S. Hoffman reported that he received the largest number of applications in his experience. More than 2,530 applications were sent in, and at that point applications were refused. A total exceeding 3,000 would have been reached.

By August 6, the Registrar's office had received more applications than were submitted throughout last year. The non-Pennsylvania quota of 10 per cent, numbering 141, has been filled.

Customs For Freshmen Revised

Class Of '41 May Date After Thanksgiving; Black Sox Out

Distinctive customs for members of the freshman class have grown up to be a part of the tradition of nearly every college or university. In recent years here observation of these customs has often tended to be lax because of a lack of understanding on the part of freshmen that such customs, for the most part, are for their benefit and because upperclassmen have hesitated to enforce them.

Last spring freshman customs here were revised in an effort to eliminate certain faults. Among the major changes were those which allowed freshmen to date after the Thanksgiving recess, the elimination of black sox as dress customs, and the abolition of the rule requiring freshmen to wear coats or jackets at all times.

In addition to freshman customs there is at Penn State a body of tradition which is observed by all students. Perhaps the best known is the custom of exchanging a cordial "Hello" with other students on the

campus. Every student greets the President of the College in the same manner. Smoking is not permitted at indoor athletic meets or in classrooms. During the singing of the Alma Mater all students stand with uncovered heads.

The official regulations regarding men's freshman customs are as follows:

1. Who shall be required to observe these customs? Any student entering as a freshman in any four-year course, unless he has attained his twenty-first birthday on or before the date marking the beginning of the school year, shall be required to undergo one year of College customs. All special students entering College with approximately the same rating as a freshman and all students changing from a two-year to a four-year course shall be required to undergo one year of customs.

2. To whom shall students eligible for adjustment of customs or exemption from customs apply for equitable relief? Students transferring from other colleges where they have undergone freshman customs and students eligible for the age exemption shall pre-

'Hello' Spirit Spreads Over Campus; Prexy Greeted With It

sent themselves before Student Tribunal at its first meeting in the new school year.

3. Freshmen shall carry a copy of the Handbook, known as the Freshman Bible, with them at all time.

4. Freshmen at no time may walk on the grass on the campus.

5. Freshmen must at all times wear their dinks and plain black four-in-hand ties, except on trips, holidays, when entertaining mothers and sisters, or when escorting women to house parties, house dances, or all-College dances. The period between 12 p. m. Saturday and 8 a. m. Monday shall be regarded as a holiday concerning only the dress customs, i. e., the dink and the tie.

6. Freshmen shall not associate with co-eds within a three-mile limit of Old Main, except at regular house party periods, house dances, or all-

(Continued on page seven)