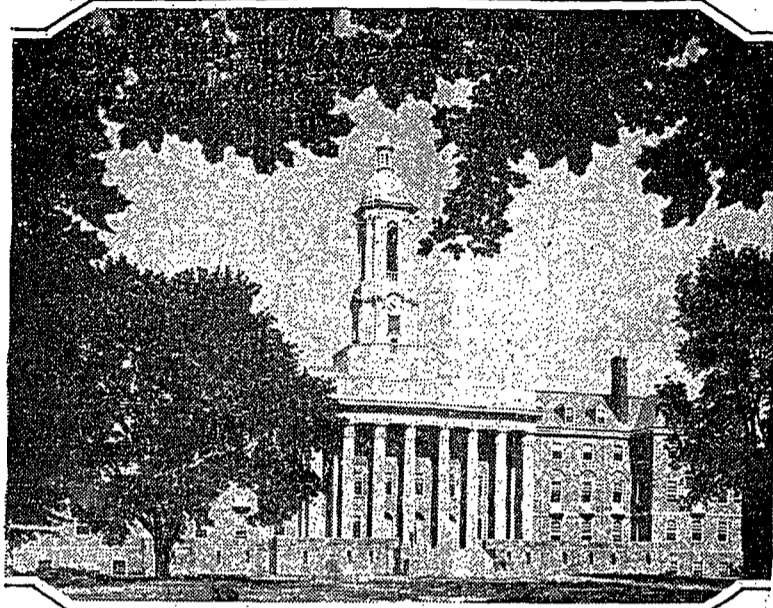


'Collegian' Pictorial Page

Old Main, Center of Student Activities



The present Old Main was built in 1929 following the razing of the original building which was erected in 1863 and condemned as unsafe about 1929. Old Main, which at one time was the only building which the College boasted, has always played a great part in the activities and life of the students here.



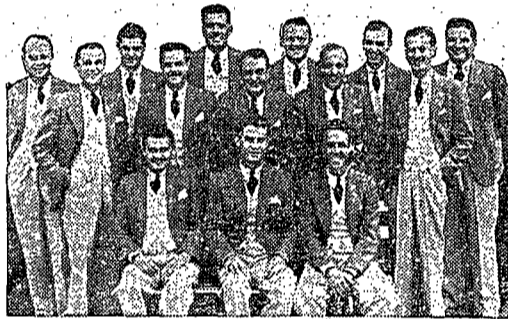
J. FRANKLIN SHIELDS
President, Board of Trustees



EDWARD K. HISHMAN
Secretary, Alumni Association



KIRBY PAGE
Visiting Lecturer



CASA LOMA ORCHESTRA
Who Played Here for Junior Prom



JOHN C. THOMAS
Appeared Here in Artists' Course

The DEN RESTAURANT
Welcome, Class of '40
FOUNTAIN SERVICE EXCELLENT FOOD
GLENLAND APARTMENTS

WELCOME, FRESHMEN
TO
MARTIN AND KREAMER BARBER SHOP
Opposite Front Campus

THE KEEFER HARDWARE
200 W. COLLEGE AVE.
EXTENDS A CORDIAL WELCOME TO ALL STUDENTS AND FACULTY MEMBERS
We invite you to visit our store, where you will always receive courteous attention
DELIVERY SERVICE DIAL 2451

Penn State Student Union Aids Activities
(Continued from page one)
In its short history, the Union has undertaken and completed many projects. Last year it sponsored about half a dozen all-College dances, several of which were free. It also held a number of concerts of popular and classical records in the second floor lounge of Old Main. General services, such as the handling of ping-pong and billiard equipment and the Carnegie Foundation phonograph records were extended through the information bureau situated on the first floor of Old Main. This office is open every day but Sunday from 8 o'clock in the morning until 7 at night. It is open Sunday morning and afternoon.
Within the past few years the Student Union office has taken over the handling of the funds for the three principal campus publications, the Collegian, Froth, and Bell. This is a voluntary arrangement and was made so that the publications could have the benefit of competent accountants at no expense to themselves. Previously each had kept its own books and handled its own money, with a result that several of them were in a poor financial condition.

Organizations Provide Variety of Activities
(Continued from page one)
and the Pre-Veterinary club. In Home Economics there are two clubs. The Ellen H. Richards club elects members from the junior and senior classes, while the Home Economics society is open to all students enrolled in the home economics curriculum.
Two engineering clubs which functioned actively last year were the Penn State chapters of the American Society of Civil Engineers and the American Society of Mechanical Engineers. Both groups are open to all students enrolled in the respective curricula. The Penn State Aero club, established in 1930, furthers interest in aviation among students who care to join.
In the School of Mineral Industries there are two societies which are open to the students, the Mining society, and the Ceramics society, which draws its membership from students in that department.
The Discobolus society aims to create closer contact among the physical education students and the instructors in the School of Physical Education and Athletics. Les Sabrous elects men and women who have demonstrated their ability and interest in fencing.

Registrar Hoffman requests that all incoming freshmen, as well as upperclassmen, bring fountain pens to Recreation hall when they register. The College does not furnish pen or ink.

Subscribe to
The Bell
\$1.00

COAL AND ICE
WE ALSO SUPPLY FIREWOOD
HILLSIDE ICE COMPANY
Dial 842

WELCOME, FROSH !!
ENJOY YOUR BEER
AT THE
HOFBRAU
ON SOUTH ALLEN STREET

The Varsity Diner
WELCOMES YOU TO STATE COLLEGE
MEAL TICKETS . \$5.50 for \$5.00; \$3.30 for \$3.00
HOME COOKED FOOD EFFICIENT SERVICE
24 HOUR SERVICE THOROUGHLY MODERN
ON EAST BEAVER AVENUE NEXT TO POST OFFICE

Balfurd
UNDER THE CORNER
John Glatz, Manager

WELCOME
CLASS
OF "40"

WE CALL FOR AND DELIVER
LARGE SELECTION OF PATTERNS FOR
YOUR NEW SUIT OR TOPCOAT
TAILORS AND DRY CLEANERS
PHONE 3461