

**PENN STATE COLLEGIAN**  
Successor to The Free Lance, established 1887

Published semi-weekly during the College year, except on holidays, by students of The Pennsylvania State College, in the interest of the College, the students, faculty, alumni, and friends.

**THE MANAGING BOARD**

HARRY B. HENDERSON JR. '36 Editor	WILLIAM H. SKIRBLE '36 Business Manager
DONALD P. SANDERS '36 Managing Editor	ROLAND W. ODERHOLTZER '36 Advertising Manager
W. BERNARD FREUNTSCH '36 Sports Editor	WILLIAM B. HECKMAN '36 Local Advertising Manager
VANCE O. PACKARD '36 Assistant Editor	PHILIP G. EVANS '36 Credit Manager
JOHN E. MILLER JR. '36 Assistant Managing Editor	LEONARD T. STEFF '36 Women's Editor
CHARLES M. SCHWARTZ JR. '36 Assistant Sports Editor	L. MARYBEL CONABEE '36 Women's Editor
WILLIAM L. McDONWELL '36 News Editor	RUTH E. KOEHLER '36 Women's Managing Editor
JOHN K. BARNES JR. '36 News Editor	A. FRANCES TURNER '36 Women's News Editor

**ASSOCIATE EDITORS**

J. Kenneth Beaver '37 Lester M. Benjamin '37 Johnson Breneman '37  
W. Robert Grubb '37 Philip S. Heisler '37 Richard Lewis '37  
E. Townsend Swain '37

**WOMEN'S ASSOCIATE EDITORS**

Marion A. Ringer '37 Regina J. Ryan '37 M. Winifred Williams '37

**ASSOCIATE BUSINESS MANAGERS**

George W. Bird '37 Kenneth W. Engel '37 Jenn C. Hoover '37  
Philly A. Schwartz '37 Alan L. Smith '37 Robert J. Sletzer '37

Sole and exclusive National Advertising Representative:  
**NATIONAL ADVERTISING SERVICE, INC.**  
420 Madison Avenue, New York City  
400 North Michigan Avenue, Chicago

Managing Editor This Issue.....J. Kenneth Beaver '37  
News Editor This Issue.....Richard E. Lewis '37

Tuesday, May 29, 1935

**THE MOAN OF THE FRATERNITIES**

With "Penn State Day" and the P.I.A.A. over, there comes a woeeful moan from the fraternities. For two successive week-ends they have each been asked to provide rooms and board for ten boys. And each time they have responded with little complaining. But now that these week-ends are over, their complaints are loud and many.

Undoubtedly there is a large drain on the fraternity's budget when it has to provide two or three meals for ten extra men and the houses that have ten extra beds are few and far between.

Both of these "Days" are more or less designed to help the fraternities in an indirect way by creating a desire in the minds of these prospective students to come to Penn State. But the question now comes up as to whether the game is worth the candle or not.

Not only is the expense for these week-ends hard on the fraternities, but the men in most of the houses are really imposed on, since they are forced, in many cases, to give up their beds in order to provide beds for their guests, few of whom they know or will ever see again. The old system of putting the freshmen of each house out of their beds for such occasions seems to be unfair.

The question as to how long these "Days" will continue successfully depends entirely upon the cooperation of the fraternities. As soon as a few of the fraternities feel that they are being imposed on too much, they will withdraw from participation in such affairs, a procedure which will quickly cause the discontinuance of such "Days."

It seems advisable that the Interfraternity Council conduct a survey as soon as rushing season is over next fall to determine whether the continuance of these "Days" is worth the trouble and expense to the fraternities.

**THE HORTICULTURAL EXPERIMENTAL**  
Gardens behind the agricultural buildings are famous throughout the state for their beauty and rareness. Each week-end brings several hundred visitors from miles around to see them. Not only are the gardens beautiful, but the service which they perform for science by means of the experiments conducted in them is most distinguished.

It is regrettable indeed that the students and townspeople cannot enjoy the beauty of the flowers without picking them, thus spoiling the beauty of the gardens for their visitors and ruining many scientific experiments.

**CURRENT EVENTS**

It has been appalling to read the results of the tests devised by members of the English composition department and which they had the members of their classes take, what with William Randolph Hearst being called a Communist organizer, Father Coughlin heading the New Deal and being a friend of the cause of Huey Long, Raymond Moley being identified as a recently captured gangster.

These tests show a definite need of a course in current events on this campus. A class, led rather than taught in current events, with newspapers for texts, would greatly aid this deplorable condition. The course would not only go into a discussion upon the current political, social, and economical situations of the world, but would also discuss happenings in literature, drama, and art, a field in which there is a woeful lack of knowledge among Penn State students.

AT SYRACUSE THE men's senate has recently abolished the practice of making the freshmen there wear "hids and ties." Quoting from the editorial of the Syracuse Daily Orange on the subject: "By abandoning the policy of making the freshmen wear hids and ties, the men's governing body recognized, as its predecessors stubbornly refused to do, that when you enforce a tradition it ceases to be a tradition."

The question of freshman customs has long been discussed here. At present it does not seem advisable that the freshman customs be totally discontinued, but rather that the length of the period, during which the dress customs are worn, shortened.

**OLD MANIA**

**Local Boy Makes Good Dep't.**

Down in Bellefonte the other Friday night it was carnival time, and a goodly number of lads from the U had gone down to watch the revelry. Most of the entertainment was pretty lousy, even for a carnival, until the call came for an opponent for the carnival's Strong Man.

Our own King Cole, being a husky youth and having some little experience at wrestling, stepped forward and offered to match his strength with the Strong Man, beating the local who had been planted in the crowd onto the platform. The Strong Man, a bit taken aback by this turn of affairs, grunted a few times, beat his chest, and agreed to our King as a victim.

No sooner had they begun to wrestle than the circus gorilla began to get rough, beating King about the head in an ungentlemanly fashion. Our lad, piqued by this roughness and urged on by the cheers of his friends led by Cheerleader Harbaugh, picked the Strong Man up, threw him down on his head, received the valuable prize, and came back home.

**College Life**

Never thought we'd live to see it, although we've always hoped we would. So "say not the battle avaieth naught." For College Life Came Back To College with a bang Sunday night. We were walking up front campus when we heard something which strangely resembled singing. Being sentimental cusses, we went over to see what went on. And what we saw sent a warm thrill right down to the cockles of our wearily old hearts, suh.

Seated on Senior Wall, arms locked around each other, sat five or six seniors, singing away to beat all hell. With that faraway glint in their eyes, too. There they were—the strong, clear-eyed youth of the land, singing softly under the starry heavens.

And above it all we could hear Mike Zeleznoek's lush baritone in "Oh give me a home where the buffaloes roam . . ."

Now whenever we feel depressed we shall think back to that idyllic scene. It's that sort of thing, mister, that keeps us Going On, instead of Throwing It All Up. (Thanks, J. V.)

**About Town and Campus:**

Dear old Delta Chi was enraged no end last week when The Maniac called them a boarding house. Ever-vigilant spies tell us that a certain local boarding house has officially informed one of its members that he is to do everything in his power to avoid an impending visit from his mother during Houseparty week-end.

Right in the middle of announcing the track meet the other day, Bucky Taylor got a fake dispatch telling of the drowning of King George when a pickeral lodged in his throat. He started to read it but got wise before he had gone very far. One of the finest examples of bad taste around here in many moons, we thought, was his running comments on how individuals were doing in their races. It must help the leaders considerably to know that "Plotz is falling behind."

Seems to us that Ted Baer is always in love . . . The J. Brutzman-Peg Smith pash flares up briefly at Froth dance . . . We finally saw Doris Ramage wearing a gold braid in her hair instead of a bow . . . Thanks to the correspondent who writes to tell us that Helen Chamberlain has Tiny Eshelman's A.C.C. pin . . . So long 'til September . . .

—THE MANIAC

**THETA SIGMA PHI**  
(Women's Honorary Journalism Fraternity)

Betty M. Lenzen '36  
Anne M. Boyer '37  
Mary A. Connolly '37  
Margaret M. Cummings '37  
Dorothy P. Fish '37  
Josephine A. Platt '37  
Marion A. Ringer '37  
Regina J. Ryan '37  
M. Winifred Williams '37

**Co-Edits**

Senior members of Delta Gamma were entertained by Mrs. F. G. Heckler at dinner last night.

Theta Phi Alpha held a cabin party in honor of the seniors at the W.A.A. cabin Saturday.

The A. O. Pi seniors gave a buffet supper for the underclass members on Sunday.

L'Amite entertained Mrs. Blume Wieshart, traveling secretary of Delta Phi Epsilon, national social fraternity, last week-end.

**Soccer Team To Play 'International' Match**

"Hoot mon, are ye r-r-r-ready?" With this stentorian query ringing in the ears of the hundreds of spectators anticipated, Penn State's first "international" soccer match will get under way on New Beaver Field on Memorial Day at 2 o'clock.

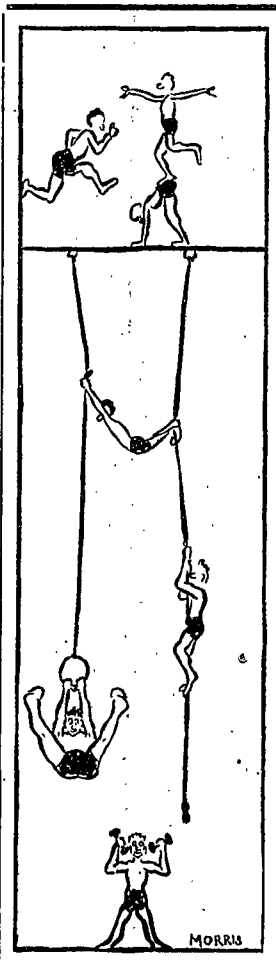
The Lion squad is being divided into two teams, one composed of those who made the eight-game tour of Scotland, and the other of those who stayed home. No effort will be spared to make the match an authentic reproduction of the games played in the birthplace of the game, incidentally the birthplace of Coach Bill Jeffrey.

According to the custom in the land of heather, bonnie banks, and fermented mountain dew, some prominent personage will be selected to "kick off." This custom, which corresponds to having the President throw out the first ball, is generally carried out over there by the provost, or mayor. In the match Thursday, some co-ed with the courage and other essential requirements will be prevailed upon to don kilts and kick off.

More atmosphere will be provided when tea and scones or oatmeal cakes will be served between the halves. The crowning bit of local color will be achieved with the proposed formation of a "home talent" bagpipe under the direction of Maestro Lynn Christy, well and favorably known in these parts as a purveyor of unusual rhythms.

**Student Union Bulletins**

TODAY  
There will be a meeting of the freshmen women candidates of the Collegian in the Collegian office to-night at 4 o'clock.



**PEOPLE WISE**  
**'ENERGIZE'**  
With COLD DRINKS  
at THE CORNER  
unusual

**Letter Box**

To the Editor:  
After reading the article pertaining to football at Mont Alto, we have decided that we have been called "softies" with no consideration of the conditions that exist at Mont Alto concerning athletics. We think that if Mr. W. B. F. really knew what the football player at Mont Alto must go through to play football his attitude would be entirely different and he would really think of us as "super-men."

Would you play football with inadequate equipment? We did! Our equipment was the cheapest equipment possible to obtain. It was actually low grade high school equipment and in it we played college football. It offered very little protection and in two of our injured cases it was the direct cause of those injuries. It was the terrible condition of our helmets that nearly caused the death of one of our players. The helmets were like bathing caps, offering little protection to the head and none to the neck. The shoulder pads, that caused one broken shoulder, fitted us like circus tents. With the aid of adhesive tape, which we bought ourselves, we did manage to keep our pants on.

Would you play football if all your injuries had to be paid from your own account? We did! We have no funds to pay our doctor bills here in Mont Alto. One of our players spent three months in the University of Pennsylvania Hospital. His fees were paid in part by the students of Mont Alto, the rest by his parents. We heard nothing from State. Why not?

We have no trainers, no training tables, no medical supplies, we haven't even a locker room. Yet we play Penn State the same fee for athletics as you do.

We have school thirty-nine hours a week which limited practicing time to three nights a week. We go to bed after our studying is done, which is at 12 and not at 9. There are other things here besides playing football; we really have to study.

You said you hated to see the game go, so do we, but what would you do under similar conditions? Why isn't it made possible that we can play football as it should be played? Why don't we have the same privileges as the player at State? By that I mean good equipment, medical supplies, and a fund to pay for the injuries of the players.

In spite of it all we have played football with never an ill word to anyone. We have played against better equipped teams, better trained teams, and have built a reputation for ourselves. A reputation that includes the highest degree of sportsmanship, and real playing ability. We invite you to ask any of our opponents.

We haven't kicked. Why should you? You should be proud of us rather than to be ashamed. We played football; and we ask you, would you play football under the same conditions?  
LeRoy Shaylor '38  
Charles Shick '38

**To the Editor:**

We are constantly being reminded of the prevalence among the students of mistaken notions concerning the status of the Beaver House on the campus. In order to clarify our unique position among organized groups, I submit this explanation.

The Beaver House is chartered by the College as an organization of individuals with common interests, intimately associated for mutual benefit. It is distinguished from the chartered social fraternities, national or local, in the following ways: first, it is not chartered as a fraternity by the College; second, it is not affiliated with the Interfraternity Council; third, membership does not preclude the joining of social fraternities; fourth, there is no secret ritual or rights; fifth there are no financial obligations other than current room and board expenses, and a very small social fee; and sixth, there is no definite "rushing" period, the majority of the members entering the house as upperclassmen.

Further, the Beaver House is different from the ordinary boarding house or club in that it is organized on a social and economic basis. It is administered, cooperatively by the members for their mutual economic benefit, and the good fellowship that arises out of common interests and ideals.

—John T. Hermansen '36, Pres.

**PI GAMMA MU**  
(Honorary Social Science Fraternity)

Marion L. Forman '35  
Edith M. Ireland '35  
Rosalie N. Joseph '35  
Mary M. Shaffer '35  
Virginia Werden '35  
Arthur Berman '36  
C. K. Lucas Brightman '36  
John Cessna '36  
Serafino Ciambello '36  
Harry I. Gilbert '36  
Frances G. Hamilton '36  
Arthur G. Lewis '36  
John E. Miller '36  
Wesley C. Mohnken '36  
Jane L. Pritts '36  
Nathaniel Wollman '36  
S. James Zarger '36

**JANTZEN**  
**BATHING SUITS**  
at  
**Schlow's Quality Shop**

**Dyer Named President**  
Vernon E. Dyer '36 was elected president of Kappa Gamma Psi, honorary music fraternity, at a meeting Tuesday night. Major Wilfred O. Thompson, College bandmaster, is director of the organization.  
Jay T. Lodsun '36 was elected vice-president, while Henry H. Bell '37 was named secretary-treasurer.

Olin F. Butt was elected sergeant-at-arms and M. Clair Swope was elected chaplain.

**PEIRCE SCHOOL**  
OF BUSINESS ADMINISTRATION  
College Men and Women may begin course in business training at the opening of the Summer Session of six weeks, commencing July First.  
PHILADELPHIA

**Vacation Bound?**

Send Your **BAGGAGE** Home by **RAILWAY EXPRESS**

No need to burden yourself with the transportation of trunks, baggage and personal effects at vacation time... send them all home by Railway Express.

Here's the way... merely telephone Railway Express and we'll call for the shipments—whisk them away on fast passenger trains, swiftly and safely to destination; they'll be home almost as soon as you are. Rates surprisingly low; two receipts—one at each end—insure safe handling and delivery.

After vacation, we'll bring your baggage back again, eliminating all worry, trouble and unnecessary expense.

For service or information telephone  
NORTH ATHERTON STREET  
PHONE 411  
STATE COLLEGE, PA.  
The best there is in transportation  
SERVING THE NATION FOR 96 YEARS  
**RAILWAY EXPRESS**  
AGENCY INC.  
NATION-WIDE RAIL-AIR SERVICE

**A Satisfactory Service**  
by a  
**Modern Sanitary Plant**  
**Penn State Laundry**  
320 W. Beaver Ave. Phone 124

**CONGRATULATIONS**  
to  
**THE GRADUATING CLASS OF 1935**

THE BLAIR SHOP OF GIFTS

**APPRECIATION**

We wish to extend our appreciation for the business favored us this year. We will be in readiness, as usual, to take care of your special orders for Houseparty Week-end.

**FISHBURN'S MEAT MARKET**  
Phone 357

**OUR WHOLESOME BREAD**  
APPROVED BY THE  
**American Medical Association**

**MORNING-STAR BREAD**

Wholesome Baking Products  
"Good to the Last Crumb"  
DELIVERED FRESH DAILY TO YOUR HOME OR FRATERNITY

**"HIGHEST HONORS"**

Gifts for the Graduate from this store always receive highest honor

**Gift Suggestions**

HANDKERCHIEFS NECKWEAR  
TIE HOLDER HOSE

**STARK BROS. & HARPER**

HATTERS HABERDASHERS TAILORS