

MOVIE CHATS

Who is Hollywood's most photographed star? You might imagine Greta Garbo or Constance Bennett. However, it seems the honor goes to Guy Kibbee, the dark horse political candidate in "The Dark Horse," soon to be shown on the local screen.

Constance Bennett may be one of the screen's highest salaried stars, but wealth has its drawbacks, even for a movie actress. Miss Bennett receives thousands of fan letters per week, many of which are requests for money. These monetary requests cover a wide range. One recently was from a girl, for \$5.00 to buy a hat "like the one you wore in your last picture."

Ricardo Cortez recently reached the pinnacle of a star by his portrayal of the young doctor in Fannie Hurst's "Symphony of Six Million." Now he comes to you in an entirely different role, that of a gossiping columnist on a city tabloid paper.

Hollywood is now turning itself inside out for screen consumption. By that, we mean that the story of Hollywood, its tinsel glory and its heart-ache, is being brought to you on the screen. The first portrayal is "What Price Hollywood?" in which Constance Bennett traces for you the rise of an extra girl to fame, and the corresponding decline of the director who made her famous.

Twenty-Third Summer Session The Pennsylvania State College

OFFICIAL ANNOUNCEMENTS

(Continued from Page One)

7:00 P. M.—Kappa Phi Kappa Meeting. Room 13 Education Building.

SATURDAY, JULY 16 Classes corresponding to those regularly scheduled for Tuesday will be held on Saturday, July 16.

1:30 P. M.—Bald Eagle Mountain Excursion. Leaves from front of Auditorium. Secure tickets not later than Friday noon at Summer Session office, Education Building, or at Student Union office, Old Main. Cost of excursion, 40c.

6:00 P. M.—Faculty Dinner, Nittany Lion Inn. Secure tickets not later than Thursday noon at Summer Session office, Education Building, or at Student Union office, Old Main.

SUNDAY, JULY 17

7:00 P. M.—Vesper Song Service. Address by Bishop Wyatt Brown, Harrisburg. Auditorium.

NOTICES

Because of the dangerous conditions created, students are requested not to bring cars to, nor park them on the campus. Cars are only to be parked in the specific parking areas on the campus, not along the campus roads.

The attention of students is called to the exhibits of books which are being held by various publishing companies from time to time in the building adjacent to the Armory.

"Make Me A Star," in which Stuart Erwin brings to the talking screen the Harry Leon Wilson story of "Metron of the Movies." Joan Blondell is featured, while intimate studio shots are shown of Maurice Chevalier, Sylvia Sydney, Guy Cooper, Clive Brook, Fredric March and others.

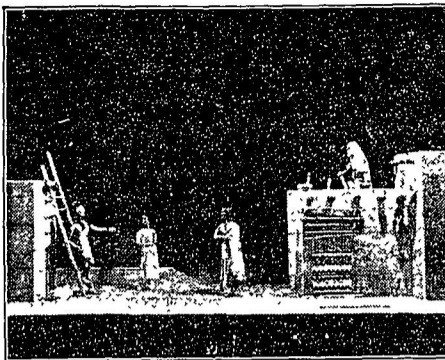
A few paragraphs above, we spoke about Guy Kibbee in "The Dark Horse." You will also see this fine character actor in another picture next week, for he has the role of James Cagney's boxing manager in "Winner Take All," the story of a young boxer who attempts to crash society and take all, including the girl. The latter happens to be Marion Nixon, last seen in "Rehearsal of Sunnybrook Farm." The picture is a comedy.

APPLICANTS FOR ADMISSION SHOW SCHOLARSHIP RANKING

The increase in high standing students among applicants for admission to the freshman class of the College has been very marked this year, Registrar William S. Hoffman has stated. Although the total number of applications has been slightly less than last year at this time, it is equal to the average for recent years, he said.

Properly qualified applicants are being offered admission in the order in which their applications are received, the freshman class for next fall being limited to approximately 1,250 students, the same number that has been accepted for some years. Limitation of the freshman class is necessary because of limited facilities of the College.

MARIONETTE SCENE



A scene from "The Legend of The Lightning," to be presented by the Tatterman Marionettes in Schwab auditorium at 1 o'clock tomorrow afternoon.

Ginkgo Tree, 'Snubbed' Here, Once Revered by Orientals

Although students daily pass it up unnoticed, a queer-shaped tree on the lawn in front of the Women's building, transplanted from the Orient, was once revered by the natives of China and Japan.

The ginkgo tree, or "silver leaf," as it was known by the oriental natives, is the sole survivor of an ancient botanical order, which with the exception of the ginkgo, had ceased to exist by the end of the stone age. The Women's building lawn ornament is a member of this ancient order.

Because its long branches made excellent fuel, the ginkgo order had almost passed out of existence when the natives of China and Japan intervened and made it the sacred decoration of their temple groves.

Since that time the use of the tree for fuel has been prohibited. To this sanctification the ginkgo owes its existence, including the representative in front of the Women's building.

Toward the close of the eighteenth century, ginkgos were introduced into the United States because of their high insusceptibility to the attacks of fungi and insects, and because of their naturally symmetrical shape and beauty. The tree here was probably imported and planted sometime during the middle of the nineteenth century. The trunk of the tree is a mass of interwoven branches, and its limbs are long and slender while its leaves are fan-shaped. It has never achieved its natural size when grown in this country.

CLOETINGH TO PRESENT LECTURE NEXT FRIDAY

Dramatics Professor Will Speak on 'The Affairs of Anatole'

Sponsored by Kappa Phi Kappa, honorary education fraternity, a lecture Schmitzer, "The Affairs of Anatole," will be presented by Prof. Arthur C. Cloetingh of the dramatics department in Room 101 Home Economics building Friday afternoon, July 17.

Professor Cloetingh is director of the Penn State Players during the winter session as well as the Summer Session. His teaching at the College is largely in the field of drama, playwriting, and stagecraft.

In September Professor Cloetingh will begin a sabbatical leave of absence that will permit him to go to Europe for continuance of his study of the drama and playwork of all lands.

ARMORY SERVES AS LIBRARY

One of the coolest buildings on the campus, the Armory, was opened Tuesday as a reading room for students attending Summer Session.

INVITATIONS PROGRAMS

HIGH GRADE PRINTING

Nittany Printing and Publishing Co.

Between Movies and The Corner

DELICIOUS HOME COOKING

Fenway Tea Room

Chicken and Waffles Every Wednesday and Sunday Evening Fountain Service College Ice Cream

College Cut-Rate Store

Corner Opposite Post Office \$1.60 Fountain Pens and Pencils 72 Sheets Fine Writing Paper, Envelopes to Match, all for .69c \$1.00 Squibb's Dusting Powder .69c \$1.00 Houbigant Bath Salts .73c 75c Houbigant Tale .49c Agfa Cameras \$1.00 and \$1.50 Bathing Caps .10c to 30c

GREETING CARDS—CANDY—CIGARETTES PATENT MEDICINES—TOILET ARTICLES Agent for Elizabeth Arden and Helena Rubinstein Cosmetics Watch Our Windows for Specials FRIDAY AND SATURDAY

SODA FOUNTAIN REFRESHMENTS GREGORY'S Home Made Ice Cream and Candies Since 1914

Our Special Sale of PHOENIX HOSE

At 69 Cents ENDS SATURDAY NIGHT EGOLF'S

The Ace Hoffman Studio

107 1/2 Allen Street

A Special Discount of 10 to 20% On Portraits

WE DO KODAK FINISHING AND ENLARGING

For Economy Sake Eat At

THE CO-OP

227 West Beaver Ave. Board \$5.00 Breakfast 20c Lunch 25c Dinner 30c

First National Bank

of STATE COLLEGE

JOHN T. McCORMICK, Pres. DAVID F. KAPP, Cashier

The continued patronage of Penn State's students and State College residents has enabled us to bring to State College one of the finest and most modernly equipped diners in the State of Pennsylvania

The new de luxe diner will be opened on July 11 and we invite your inspection of its commodious and sanitary interior

College Diner

On Beaver Avenue Near the Post Office

35c MEAL

SERVED FROM 11 A. M. TO 7 P. M.

ALWAYS OPEN

SUBSCRIBE

... to the ...

SUMMER COLLEGIAN

OFFICIAL ANNOUNCEMENTS

Feature Articles

News Stories

COMPLETE CAMPUS COVERAGE

Fifteen Cents for Remaining Four Issues

Nittany Printing Building or call 292-W