

Sidelines

Fred Kane, Nittany linesman, was named guard on the all-opponents team selected by Coach Hennie Miller at Temple University last year. Kane played at the center position, but was converted to the guard post this fall. He was the only Penn State player to gain a place on the team selected by the Owl mentor.

Penn State and Notre Dame are the only two football teams which were able to penetrate the defense of the Pittsburgh Panthers to score touchdowns this year. The South Bend team defeated Pitt 27-to-12 with a deceptive aerial attack, while a week later the Nittany Lions scored as the result of a completed forward pass.

The 31-to-0 victory scored by the Nittany gridmen over Lehigh, Saturday was the first win registered by a Penn State football team against a major opponent since 1920. The previous victory was also scored on Franklin Field when the Blue and White players defeated the University of Pennsylvania, 19-to-7.

In commenting on the Penn State-Lehigh game Saturday, Ed Pollack, Philadelphia sports writer, said that Captain Lasch was one of the best backs that played on Franklin Field this season. Judy was responsible for thirteen points in the game with the Brown and White team.

The defense of the Nittany Lions was so strong Saturday that the Bethlehem team in the first half could gain only twenty-eight yards from scrimmage, and in addition, the Lehigh backs were thrown for losses totalling twenty-three yards. Penn State gained 189 yards from scrimmage in the same half.

Captain Ted McKone has allowed only thirteen goals to get through him in the three years he has played on the varsity soccer team. In his sophomore year, Ted was selected on the all-American soccer team.

Captain Judy Lasch has accounted for thirty-two points this season. The total score for the remainder of the team is thirty-seven. In the Lebanon Valley game, Judy scored three touchdowns and kicked a goal.

WEATHER: Fair and Cold
ENJOY A CUP OF DELICIOUS HOT CHOCOLATE
AT LOCUST LANE SANDWICH SHOP
"Any Time Is Lunch Time"

HORSEBACK RIDING

SPECIAL TICKETS ON EASY TERMS
Beginners—1 P. M. Daily. Other Groups—1 P. M.
FREE INSTRUCTIONS—MAKE RESERVATIONS
Students, Ask About Phys. Ed. Credits
CAMPUS SADDLE SCHOOL
Rear of Hotel and Theatre Phone 9799

Ask Your Fraternity Brother About the
Christmas Gift He Has Ordered from
BALFOUR'S
Then—
STOP IN AT THE BRANCH OFFICE AT
SAUER'S STORE
And You Will Understand Why Santa Claus' Pack Will Be
FILLED TO THE TOP with
BALFOUR FRATERNITY JEWELRY

College Cut-Rate Store

Only One More Week Left to Order Your
PERSONAL XMAS CARDS
A large assortment of 5c and 10c Xmas Cards—also packages of 12 for 50c and 12 for \$1.00
Tags, Seals and Ribbons
TOILET SETS in
Athena
Rubenstein
Yardley
Houbigant
Letheric
Bourjois
Bill Folds
Vanity Cases
Perfumes
Pen and Pencil Sets
Playing Cards
Novelties and Toys
CIGARETTES—TOBACCO and CANDY
All in Xmas Wrappings

Chi Upsilon, Kappa Sigma Vie For Grid Crown Tomorrow

Intramural Football Finalists Meet To Decide Championship at 2 O'clock on New Beaver Field

Chi Upsilon and Kappa Sigma will clash on New Beaver field at 2 o'clock tomorrow afternoon in the final engagement of the intramural football tournament. The championship cup will be presented to the winning team at the close of tomorrow's game.

Judy Lasch will officiate as referee, Bob Snyder as umpire, Phil Mooney as head linesman and Chuck Gillard as field judge. Francis E. Schill '32, tournament manager, has announced. Eight-minute quarters will be played, he said.

In the semi-finals played before Thanksgiving vacation, Chi Upsilon defeated Phi Sigma Kappa, 13-to-0, and Kappa Sigma overcame Sigma Nu, 6-to-0. Fifty-six teams were entered originally in the competition.

Kappa Sigma will pit a line-plunging attack against the varied tactics of Chi Upsilon's eleven. Both teams average about the same in weight, although Kappa Sigma holds a slight margin with 167 pounds to their opponents' 161.

Ritenour will fill the left end post for Kappa Sigma. Moothouse, a member of the Lion squad this year, will start at left tackle, with Tompkins, who played for Genesee Westtown High, will take the center position, next to Fryberger, former Dickinson Seminary gridman.

Henty, formerly of Aspinwall High, will start at right tackle, with Dale, who was on the State College High School team, at the wing post. Bailing, of McDonald Prep, will play at

CANDIDATES FOR FRESHMAN BASKETBALL BEGIN PRACTICE

Candidates for the freshman basketball team reported to Coach Lutz Conover for their first workouts this week. Because of the large number, the squad was divided into three groups, the first group reporting on Wednesday and the second last night. Tonight's practice will complete the first night trials.

Conover indicated last night that he plans to begin reducing the squad next week. The yearlings meet Dickinson Seminary of Williamsport in their first game February 6.

GRIDMEN ELECT '31 OPPONENTS ELEVEN

Football Men Choose 5 Orange Grid Stars, 2 Each From Colgate, Lafayette

As a climax to the Lion football season, an all-opponent eleven was selected by the nineteen players who competed the most time throughout the season.

Captain John Orsi of Colgate at end was the only unanimous selection, while Tom Lombardi of Syracuse followed closely behind with seventeen of the nineteen ballots to clinch one tackle position. Syracuse placed five men, Colgate and Lafayette each two, and Temple and West Virginia one each.

The lineup:
Ends: Orsi, Colgate, 19; Elliott, Syracuse, 13
Tackles: Lombardi, Syracuse, 17; Schobel, Colgate, 6
Guards: Trudall, Syracuse, 11; Ed-Myers, of Lansdale High, will fill the post of fullback.
Center: Reuter, Lafayette, 15

quarterback, and Waters, Augusta Military Academy, and Flemken, of Uniontown High, at the halfback posts. Aldrich, of Aspinwall High, will fill the fullback post.

In Chi Upsilon's starting lineup, Foust is slated to start at left end, and Albright at left tackle. Butten, who was on the Asbury Park eleven, will take his place at left guard, alongside Hobbs, in the pivot position. Edal, of Northeast High, will fill the left guard post.

Humphrys has been selected to play right tackle, and Larsh will receive the terminal assignment. Wallis is to start at quarterback, and Gross, of Elmwood City High, and Foster, of Tammany High, at left and right halfback. Myers, of Lansdale High, will fill the post of fullback.

Graham & Sons

Est. 1896

Christmas Candies Arriving Every Day
Beautiful Boxes and High Grade Bulk Candies
Come In and Look Them Over

NOTICE

The Best Place to Buy Coal in State College is the
Hillside Ice and Coal Company

Highest Quality of Coal at the Right Price Phone 136-J

"You Can Get It At Metzger's"

1932 Calendar Pads and Stands
25c—50c—75c—\$1.00

XMAS CARDS NOW ON DISPLAY
Boxes of 18 as Low as 50c

A Large and Varied Assortment of Bill Folds
\$1.00 to \$7.50

L. K. METZGER 111 Allen Street

CATHAUM Monday - Tuesday
Dec. 7 and 8
Matinee Daily at 1:30



The **Cuban LOVE SONG**
With Jimmy Durante, Lupe Velez, Ernest Torrence, Karen Morley

Quarterback: Doyle, West Virginia, 9
Halfbacks: Johnson, Temple, 14; Moran, Syracuse, 8
Fullbacks: Fisher, Syracuse, 9
For a second team the following lineup was decided:
Ends: Gidd, Temple, 3; Stoneberg, Syracuse, 2
Tackles: Schwitzer, West Virginia, 5; B. Elly, Colgate, 2
Guards: Ouder, Pitt, 4; Smith, Temple, 3
Center: Masland, Colgate, 2
Quarterback: Whittock, Temple, 7
Halfbacks: Sebastian, Pitt, 6; Simms, Pitt, 2
Fullback: Lutster, Colgate, 8

31 VARSITY RIFLEMEN START PRACTICE FOR FIRST MATCH

Thirty-four varsity men reported to Lt. Lyman O. Williams, coach, for rifle team practice last Tuesday. Regular practice sessions will be held at 6:15 o'clock Tuesday and Thursday nights and at 1:15 o'clock Saturday afternoons.

Five shoulder to shoulder matches have been arranged, the first taking place with Gettysburg College here on February 13. Included in the schedule is an engagement with the United States Naval Academy at Annapolis, Md.

CO-EDS HOLD CAGE PRACTICE

With a large turnout of players from McAllister hall, basketball practice for women's winter intramural games began Tuesday night. The contests will start after Christmas.

Here, MEN, smoke a man's smoke

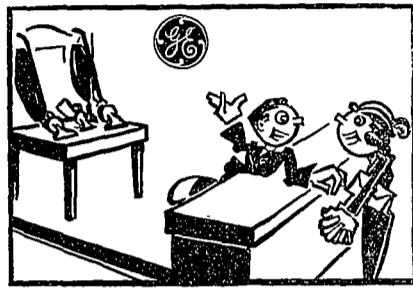
A PIPEFUL of good tobacco is distinctly a man's smoke. The women (long may they wave!) have taken over most of our masculine privileges. But pipe smoking still belongs to us.

In every walk of life you'll find that the men at the top are pipe smokers. And most college men agree that the pipe offers the rarest pleasures a man could ask of his smoking.

When you smoke a pipe, be sure you choose the tobacco that will give you the greatest enjoyment. In 42 out of 54 colleges Edgeworth is the favorite. You can buy Edgeworth wherever good tobacco is sold. Or for a special sample packet, write to Larus & Bro. Co., 105 S. 22d St., Richmond, Va. Sample is free.

EDGEWORTH SMOKING TOBACCO

Edgeworth is a blend of fine old burleys, with its natural savor enhanced by Edgeworth's distinctive and exclusive eleven-step process. Buy Edgeworth anywhere in two forms—Edgeworth Ready-Rubbed and Edgeworth Plug Slice. All sizes, 15¢ packet package to \$1.50 pound humidors.



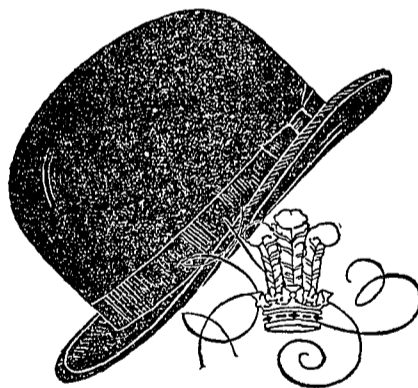
We have selected
G-E CLEANERS for you

BECAUSE we know you want the best. General Electric now offers both types of cleaners. The straight suction De Luxe \$42.50, Standard \$35.00, Junior \$27.50 and Handy \$11.50. And the new SUPER, a powerful motor driven brush model that became popular overnight. Here's the SUPER—a beauty! Light in weight—only 15 pounds—ample furniture clearance. 5 point adjustment on the revolving brush, nozzle adjustment, 20 feet of rubber-covered cord with soft moulded rubber attachment plug—motor packed in lubricant, one year written guarantee. In fact every worthwhile feature is incorporated in this cleaner.



ELECTRIC SUPPLY CO.
202 Allen St. Phone 219-J

GENERAL ELECTRIC
Authorized Home Appliance Dealer



DERBY

FINCHLEY
EIGHT DOLLARS

SOFT SHAPES FROM SEVEN TO TWENTY

AGENTS IN THE PRINCIPAL CITIES OF THE UNITED STATES

Will Be Found Here Exclusively

Nationally Known **Stetson** Justly Famous

Suits and Top Coats tailored to your individual measure.
\$24.50—\$29.50—\$34.50