

Harriers Seek IC 4-A Title Monday; Plebe Eleven Meets Kiski Away

Our Opponents

West Virginia-Georgetown

After coming through with a victory against West Virginia Wesleyan last week, the Mountaineers have about elected themselves our particular "puzzle eleven." They've been so inconsistent either in winning or losing that it's hard to say just who will take this closely matched set. However, after Georgetown's strong showing against Bucknell, we're inclined to favor the Hoyas.

Lehigh-Rutgers

By all outward appearances, the Brown and White has at last hit its stride and should take over the Scarlet of Rutgers tomorrow, after a hard fight. When victories and defeats for the season are balanced, Rutgers would appear to have a slight advantage, but we believe the fight that has been developed at the Bethlehem school within the last two weeks must be considered.

Waynesburg-Slippery Rock

The Yellow Jackets ought to have things all their own way against the comparatively weak opposition that the Teachers can offer. A crippled lineup probably will keep the score down and make the game interesting.

Temple-Carnegie Tech

Temple's undefeated Owls tangle up with the Tartans of Tech in one of tomorrow's feature battles and when the smoke has cleared, we're very much afraid the string of consecutive Cherry and White victories will be broken. However, the Plaid will not have their 1930 margin of victory, in fact, they probably will be held to a one touchdown advantage.

Dickinson-F. & M.

The Red Devils will undoubtedly put up a good fight against their heavier adversaries, but everything points to a victory for the Lancaster eleven. We believe the score will be close, possibly a one touchdown difference.

Syracuse-Colgate

What a game this should be! One of the East's undefeated teams, Syracuse, meets her powerful traditional rival with better chances for victory than in the last decade. However, on the face of past performances, it looks like a Maroon decision by a scant margin.

Pitt-Army

In meeting the West Pointers, Pittsburgh takes on what is admittedly one of the strongest teams in the East. Victory probably will go to the team with the strongest offense, and we believe that eleven to be the Panthers. They'll have to stop Ray Stecker, though.

Lion-Lafayette Grid Rivalry Had Inception in 1889

A football rivalry that began back in the days of nose guards, revolving wedges, and bushy hair, will be renewed at Easton on Saturday when the Penn State football team invades the Lafayette campus for the fourteenth game in the gridiron history of the two institutions. Penn State and Lafayette first met in 1889, shortly after football became an intercollegiate sport at Penn State.

During the next decade the teams played about every other year, closing the first span of the series in 1898; a three-game series covering the years of 1911, 1915, and 1916 followed. The teams did not meet again until 1927 when the present series began.

Of the thirteen games, Penn State has won nine, Lafayette three, and one was a tie. This tie game was played last year, the first season as head coach at Penn State for Bob Higgins. Higgins was a player against Lafayette in the three games in 1914, 1915, and 1916, all of which were won by the Lions.

Heib McCracken, Lafayette coach, has had charge of the summer session coaching classes here for several years and played against Penn State teams while a student at Pitt.

WALTON WINS CHAMPIONSHIP IN CO-ED TENNIS TOURNAMENT

Winning the women's annual fall tennis tournament, Ruth P. Walton '31 defeated Anna A. O'Her '32 in the finals Tuesday afternoon. Miss Walton won by a score of 6-3, 6-8, 6-4.

Dorothy M. Bolton '35 won the freshman tourney by defeating Margaret L. Kinsloe '35 last Thursday.

FOSTER COAL & SUPPLY CO.
GENUINE ANITA Punxsutawney Coal
Phone 114-M

LIONS TO COMPETE IN NEW YORK CITY

Will Enter Varsity, Freshman Races Over 6-Mile Van Cortlandt Course

Penn State's harriers will seek their fifth championship when they compete in the twenty-third annual intercollegiate cross-country run over the six-mile Van Cortlandt Park course in New York City Monday afternoon. The Lion varsity and freshman runners will leave tonight, arriving in New York tomorrow morning, where they will remain until Monday night. Sometime tomorrow Coach Nate Cartmell will give his varsity and freshman hill and dale's light workout over the course.

Glassburn Improves

Nittany hopes for retention of the championship, won last year, were considerably diminished when Coach Cartmell announced Wednesday that Geringer and Space may not be able to run Monday because of injuries which have become apparent this week. Space injured his ankle in the Syracuse meet Saturday and Geringer received a similar injury in a workout early this week.

Charles King is the only member of this year's team who placed within the first ten in the intercollegiate last fall. Bill Space with fifteenth and Clinton Van Cise with twenty-third places led the remaining Lion runners in the intercollegiate, Captain Glassburn with a first and a second in dual meets has shown considerable improvement over his performances during two previous years of varsity competition.

Freshmen To Run

England, Rishel, and possibly Turner will complete the varsity squad. The Lions will match paces with the outstanding distance runners in the country when they compete over the six-mile course. Larry Belanger of Syracuse, George Baker of New York University, Norwood Hallowell of Harvard, Joseph McCluskey of Fordham, and Bill McKinniff of Pennsylvania, are individual harriers who will offer the Penn State runners serious opposition. In addition Clark Chamberlain of Michigan State may defend the individual championship he won last year.

Harvard, New York University, Syracuse, Cornell, Maine, Manhattan, and the University of Pennsylvania are expected to push the Lions closest for team honors. Penn State will base its hope for victory more on a well-balanced team than on individual performers. Preceding the varsity race, the first year team composed of Harvey, Masters, Michaels, Platt, Stauffer, Alex-



CARTMELL

Lions, Cornell Vie For Title Honors In Cross Country

Penn State and Cornell are the only teams who can boast of more than two consecutive victories in the annual intercollegiate cross-country run. From 1908, when the run was inaugurated, to 1912, Cornell won four successive championships. The Ithaca team placed a man first in every meet until Robert St. Boyd of Harvard broke the streak in 1913. It was during this period that John Paul Jones, by winning the race three years in succession, established a record which has never been equalled.

John Overton of Yale, with two successive victories in 1915 and 1916, and Bill Cox of Penn State, with wins in 1920 and 1927, are the only other harriers to win the run more than once. All of Penn State's team victories have been recorded since 1925. In 1929 the Lions won their first individual victory when John Romig gained first place. The Nittany harriers placed fifth in 1921 and dropped to tenth place in 1922. The following year they were sixth and in 1925 they placed fifth place. Penn State won team honors in 1926, 27 and 28 but dropped to sixth place in 1929.

ander, and Sauerland, will enter the twelfth annual freshman run over a three-mile course. The freshmen placed seventh last year in the run, which was captured by Syracuse.

EATS
PLENTY OF THE BEST
For \$5.50 and \$6.00
DEAN CLUB
334 West Beaver Avenue

SCHILL WILL LIST ELIGIBLE GRIDMEN

Intramural Manager To Announce Players Permitted Part in Contests by Monday

A new eligibility list for intramural football games will be announced by Monday, according to Francis E. Schill '32, tournament head. The new list will include freshmen who have not won numericals this season.

In the first set of games on Wednesday night, Alpha Chi Sigma, defeated Tau Phi Delta, 12-to-0, while Beta Theta Pi bowed to Sigma Phi Epsilon by the same score. In the second set of games, Chi Upsilon won from Pi Kappa Alpha by 5 first downs to 2, and Theta Chi succeeded in downing Beta Kappa, 8-to-5 first downs.

Tuesday night, Alpha Chi Rho was victorious over Sigma Chi, 6-to-0, Lambda Chi Alpha defeated Theta Kappa Phi, 27-to-6, Phi Kappa vanquished Delta Upsilon, 38-to-0, and Alpha Tau Omega succeeded in downing the State Club, 3-to-1 firsts. Pi Kappa Alpha forfeited to Sigma Alpha Epsilon Monday night. Kappa Sigma won from Prent Hall, 10-to-2, while Delta Tau Delta defeated Tau Sigma Phi, 19-to-2, and Sigma Phi Sigma was victorious over the Commons Club, 12-to-0.

CONOVER ALTERS STARTING LINEUP

Squad Crippled by Injuries—5 Replacements Made for Final Encounter

With a lineup depleted by injuries, the freshman football team will engage Kiski Prep in the last game of the season at Saltsburg tomorrow. Five of the eleven men who started against Bellefonte Academy last week will not be in tomorrow's game at the kickoff, Coach Larry Conover indicated yesterday. Three replacements will be made in the line, while the backfield will be altered by substitutions at two positions.

McCabe will take Fletcher's place at left end tomorrow, Hannah has ousted Krezman from the right tackle position, and Hoese will appear in the center of the line, replacing the injured Hayward. In the backfield, Taylor will be used in place of Douglas, at right half, and Slemp will take over Boring's duties at full-back.

Have Formidable Record
Kiski is probably the strongest team which the yearling gridmen will

HORSEBACK RIDING
SPECIAL TICKETS ON EASY TERMS
Beginners—1 P. M., Daily Other Groups—1 P. M.
FREE INSTRUCTIONS—MAKE RESERVATIONS
Students, Ask About Phys. Ed. Credits
CAMPUS SADDLE SCHOOL
Rear of Hotel and Theatre Phone 9799

face this season. Among their notable victories are conquests of the Navy plebs, and the Carnegie Tech freshmen. They played a 6-to-6 tie with the Pitt venturing team, which defeated the Lions here, 33-to-0, two weeks ago.

Evidently satisfied with Webb's showing at end last week, Coach Conover is starting the former tackle at the other terminal post tomorrow. Park is Hannah's mate at tackle, and Elbert Johnson and Lou Allen will start in their guard positions of last week.

Sigal and Mielons will start at left half and quarterback against the Saltsburg eleven. The two have been playing the most consistent ball in the backfield, although the Bellevue star has been carefully guarded by the opposing team's defense in every game.

In his second string line, the fre-

man coach plans to use McLaren and Phillips as ends, Johnson and Krezman at tackle, Kessler and Niemi, as guards, and Woolbert at the center post. The backfield includes Hunter at quarterback, Delaberto and Engle as halfbacks, and Boring in the full-back position.

R. F. STEIN
Gas, Oil, Acemiting
Fireproof Storage
24-Hour Service
Phone 252

SANDWICHES HOT CHOCOLATE SALADS
For That Late Breakfast—STOP AT THE
LOCUST LANE SANDWICH SHOP
Right in the Heart of the University Section
FOUNTAIN SERVICE HOME BAKED PIES and CAKES

FRUIT
The Pennsylvania State College Orchards
Fresh cider is on sale at the fruit packing house. Bring your own container. All winter varieties of apples are on sale at the same place as well as the town grocery stores. A salesman is on duty during business hours. Packing house phone No. 913-R-1.
DEPARTMENT OF HORTICULTURE
THE PENNSYLVANIA STATE COLLEGE

A Perfect Figure ~ ~ Moulded by MAIDEN FORM

In this day of sheer textured frocks and fitted lines, even the most perfectly proportioned of us must be properly "founded" . . . and the most alert young moderns are finding in a Maiden Form uplift and girdle all they could desire in foundations. With Maiden Form's skilful moulding, even the most casual little campus frock becomes a model of smart trimness . . . and sleekly moulded formal gowns becomes studies in rhythmic line.

Your favorite college shop will be glad to show you Maiden Form uplifts, girdles and garter belts.

MAIDEN FORM BRASSIERE CO INC
Dept. C 245 Fifth Avenue New York, N. Y.

AT DEALERS EVERYWHERE
"There is a Maiden Form Foundation for every type of figure"

Slim figures favor the tailored "Maidenella" shown above, to accent the sculptured roundness of the bust. The Maiden Form steps of fashioned elastic slenderizes the figure for the slim-below-the-waist frocks.

The "Maiden Form Double Support" is full figure uplift with inside pocket and diagonal bands, broadened ballasted semi-top.

"Green shen" whose cross ribbon design defines the bust for average figures, charming ballasted junior girdle.

The Maiden Form BRASSIERE
GIRDLES - CARTER BELTS
Accept No Substitute Insist on the Genuine MAIDEN FORM Label

SOLD EXCLUSIVELY BY
BAND BOX
Also GOLD MARK HOSE—\$1.00—\$1.95

"I liked Chesterfield right from the start"

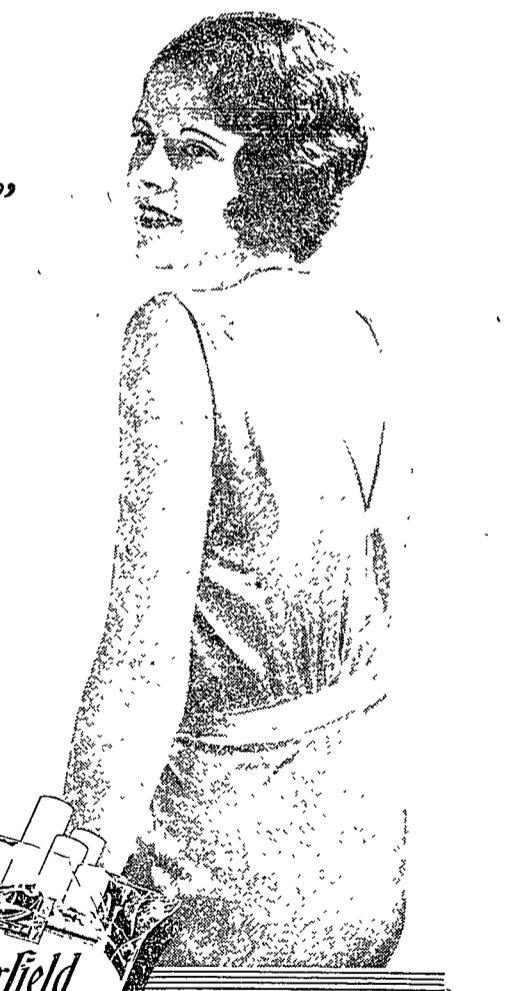
"NO, I don't know a blessed thing about how cigarettes are made. But, of course, I would want the tobacco to be PURE. And then I've heard that the blending is very important. I'd want that to be done just right.

"Then the paper. I don't like paper that you can taste—or smell when it's burning. I'd want that pure too.

"Another thing. I want to smoke whenever I feel like it—without worrying about smoking too many. So I want my cigarettes MILD.

"But the main thing, of course, is TASTE. I don't care for over-sweetened cigarettes. I much prefer those that are just sweet enough.

"Chesterfield seems to satisfy in every one of these ways. That is why I'd rather have a Chesterfield."



SMOKERS tire of too much sweetness in a cigarette, and they don't like raveness. For a steady diet, they want a cigarette like CHESTERFIELD—a mild and mellow smoke, free from any over-sweetness or any harshness or bitterness. That's why more and more smokers every day are changing to CHESTERFIELD. Good . . . they've got to be good.