

PENN STATE COLLEGIAN

Published semi-weekly during the College year, except on holidays, by students of The Pennsylvania State College, in the interest of the College, its students, faculty, alumni, and friends.

THE MANAGING BOARD

- WILLIAM K. ULFRICH '31 Editor
ALAN B. CUTTING '31 Business Manager
ROY E. MORGAN '31 Managing Editor
ALBERT J. MILESKI '31 Circulation Manager
WILLIAM C. MELVAIN '31 Advertising Manager
JACOB L. COHEN '31 Sports Editor
WILLIAM B. HILMAN '31 Foreign Advertising Manager
CHAPLES A. SCHMIDT '31 News Editor
NORMAN B. SOHLER '31 News Editor

ASSOCIATE EDITORS

- Helen K. Frear '32
William H. Irvine '32
Louise Margenau '32
WOMEN'S ASSOCIATE EDITORS
Mary M. Wright '32

ASOCIATE BUSINESS MANAGERS

- Samuel Snelgar '32
Edward S. Steering '32

TUESDAY, MAY 12, 1931

CONSTITUTIONAL AMENDMENTS

Once again questions concerning the future of the Penn State will be decided by the undergraduate electorate. By voting today students will show their views on the importance of a serious problem which has faced Penn State for a number of years.

CHEERLEADING

If the amendment to the Athletic Association constitution is passed which will reward the entire senior staff of cheerleaders with letters, a marked improvement should be noted in the quality of cheerleading here.

Another amendment up for the approval of students concerns the system of calling out candidates for cheerleading positions during the first part of their sophomore year.

If this system is adopted another improvement over the old method would soon be evident. During their entire sophomore year the candidates would receive instruction in the art of leading songs and cheers.

OUR NEWEST SPORT

The decision Penn State students will make at the polls today will either give impetus or hand a setback to the infant of Nittany sports-gymnastics.

Gymnastics, more than any other sport, has proved itself an attractant to students who are chiefly concerned with the betterment of their physical condition.

Penn State students should feel justly proud of their undergraduate activities. The splendid performance of the Penn State Glee Club and the Penn State Players helped to make the 1931 Mother's week-end one of the most successful in the history of the College.

TOO SILENT APPLAUSE

Unhindered by loud applause, Penn State's Y. M. C. A. has accomplished many important functions of college life with regularity for a number of years.

It is easy to enjoy the benefits of such an organization with too-silent appreciation. Editorial comment in the University Daily Kansan, listing many of the Y. M. C. A. activities, decries the fact that too few students are interested in them.

An analogy might easily be constructed on this subject. A cure for the problem of over-lapping trousers could not be found there, nor has it been worked out with complete satisfaction at Penn State.

With Memorial Day close at hand when institutions all over the nation honor America's war heroes, it might be well for many Penn State students to check up on their military etiquette.

CAMPUSEER

BY HIMSELF

Well, we went over to Fraser Street Dorm and we're entirely disillusioned. Wish we hadn't gone, in fact. This popularity race, we thought, would be a nice thing to remember for our granddaughter.

After we went inside, things looked much brighter for a moment. We noticed that what used to be a dining room had been furnished with a davenport and a few chairs and converted into an additional parlor.

Then we asked about the scores. There was something they wanted to tell us about: Snozley Sevast, they said, had counted walking home from class. Yes, counted it as a date and put the boy's name on her list and everything.

Let none of you engineers ever heard of synecdoches. No! Put your slide rules away for a minute and we'll explain. It's a figure of speech, see? Pronounced sy-neck-dough-kye.

That weird word was unearthed one day in a Lit class, where Dr. Dye was discussing on poetry. He asked the class what the term meant, but nobody seemed to know.

"Well," asked the Doctor, "What is it?" "Synecdoche is a city in New York," replied the punster.

We want to announce that in one of the drawers in the long table up in the third floor lounge there lies a neatly typed article entitled "Wax and Honey As Products in Ancient and Medieval Times."

About town and campus—Jack Carson with a stick-pin in his tie. . . That lucky Henkle fellow who won an Austin for a dime parks the thing "neath the D. T. D. back steps. . . Prof. Weiner playing tennis. . . We suggest that Ike Young give the right side of his mouth a rest by talking out of the left side for a while. . . Bert Lam, Sid Mattis and Betty Parol deciding what kind of daughters they'd like to have. . . Carolyn Ridge, flavencrowned beauty. . . Co-eds leaning to clip sheep on Ag Knell. . . Where oh where is that pal of our youth, Sylvester C. McFinch? . . . Dot Ley is in town for a week. . . Larry Hann, Theta Chi swimmer, journeys often to a crossroads called "Matth's Fairground" to visit a lady fair. . . A couple of nonchalant Ags tossing quarts in the Stock Judging Pavilion.

SCHOLARSHIP DAY PRIZES ANNOUNCED

(Continued from first page)

Sigma Pi, honorary commerce and finance fraternity. . . Caroline E. Jonee was the winner of the Omicron Nu Freshman prize, while Geraldine B. Wagner '32 obtained the Maude Elizabeth Foster Economics and Sociology prize of \$25 in gold.

Chi Epsilon presented its award to Robert M. Maxwell '31, while Sigma Tau awarded a medal to Beck, and Phi Lambda Upsilon gave a cup to Charles Michel.

Present 49 Council Medals of the honor society council, presented forty-nine medals to freshmen and sophomores who have maintained a scholastic average of 88 percent or better. Thirty freshmen and nineteen sophomores received the award.

Cooperation between the College and the State Laundry-owners association will be discussed by Prof. Pauline B. Mack, of the chemistry and physics department, at the Shenley hotel, in Pittsburgh, Tuesday and Wednesday.

TO OFFER ELECTIVE COURSE

Geophysical prospecting will be offered next fall as an elective course by the School of Mineral Industries, according to Prof. William R. Chesley, head of the mining department, who will teach the course.

DRUID ELECTIONS

- C. Wilson Anderson '34
N. Parker Beryl '31
John R. Byers jr. '31
Selwyn Edwards '34
Robert E. Ellstrom '34
Louis Greenstone '34
Thomas J. Harper jr. '31
George E. Kerr '34
Albert H. Manwaring '31
Albert R. Marsh '34
Harold Rosenberg '34
John N. Shaffer '31
Thomas A. Slusser jr. '31
Anthony B. Snyder '31
Stanley L. Zawacki '31

From California to New Haven the FAVORITE pipe tobacco of college men is— EDGEMORTH SMOKING TOBACCO

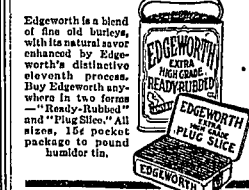
WHEREVER college men pause to load their pipes you'll see the familiar blue tin of Edgeworth!

At California, at Yale, at Williams and Cornell. . . in America's leading colleges and universities you will find Edgeworth the favorite smoking tobacco of the college man.

College men everywhere respond to the appeal of pipes—packed with cool, slow-burning Edgeworth. Be guided by their choice. Try Edgeworth yourself. Taste its rich natural savor that is enhanced immeasurably by Edgeworth's distinctive eleventh process.

You will find Edgeworth at your nearest tobacco shop—15¢ the tin. Or, for generous free sample, address Larus & Bro. Co., 105 S. 22d St., Richmond, Va.

EDGEMORTH SMOKING TOBACCO



Footlights

"Not so bad, not so bad," a hard-bitten Thespian adjudged the Penn State Players' production of "The Donovan Affair" as the final curtain rang down on the Owen Davis mystery show Friday night.

As for ourselves, we doff our top hats to Professor Mason for a nicely-timed and well-staged mystery thriller. After putting Ibsen in his place the way we did the last time this department appeared, it looks like we have no kick coming on this show, but we did pass the detective story stage sometime ago, sir.

Amie Mellinger, in what is probably her last performance as a Player, turned in a good bit of work but lacked an edge of vitality which may be excused on the highly plausible grounds that anybody would feel enervated upon being crowned Queen of May and having her lover arrested for murder the same week-end.

CO-EDS Make SCHLOW'S QUALITY SHOP Your Headquarters

Foster Coal and Supply Co. GENUINE ANITA Punxsutawney Coal Phone 114-M

EDWARD CLOTHES MADE FOR YOU \$24.75 - \$28.75 \$38.75 Smith's Tailor Shop Exclusive Agents

starring on the program for excellence were played by Phyllis Beutler, who is always capable and who is a Player no matter what was panted on the program, by Marjorie Hathaway, who was an excellent maid and who can do a Spanish dance, by Robert Smith, who is a newcomer and who has a fine speaking voice, and by Kenneth Page, who is a member of Theta Alpha Phi and who lipps. We had single stars for Frank Morris, Shirley Thorpe, Fairfax Reilly, and Sylvia Mullin.

PATRONIZE OUR ADVERTISERS

DEAL & SON Plumbing and Heating Fraser Street

NOW IS THE TIME TO HAVE YOUR LAWN MOWERS SHARPENED BY GRINDING Robert R. Mingle 119' South Fraser Street Phone 385-J

DID YOU KNOW THAT-- The Town and Campus Bus Has Revised It's Schedule for the Students' Convenience Ride It EVERY DAY

MOTHER Has Gone Home But The Penn State Laundry Is Always With You Our Rates Have Been Reduced It Will Pay You to Investigate

Quick Courteous Service Free Delivery Have that "tax shirt" laundered now! It will be ready when you want it. THE PENN STATE LAUNDRY 320 W. Beaver Avenue Phone 124

A NEW ARRIVAL LINEN and NUROTEX SUITS at \$16.50 MONTGOMERY'S at Penn State

Rexall 1c Sale Thursday -- Friday and Saturday Offers You Big Savings Two for the Price of One Plus 1c More REXALL DRUG STORE