

# Hermann Selects Lion Court Varsity; New Class May Add to Wrestling Interest

## BASKETBALL COACH NAMES FIRST FIVE

Mazess, Hamilton, Fry, Weber, Win Positions on Lion Varsity Quintet

### LIONS TO VIE FOR CUP

Competing for a silver trophy to be awarded the quintet showing the best league average, Penn State has joined with Syracuse and Colgate in a triangular basketball association. Each team will play two games this year with association opponents and the five winning the cup will gain possession of the award for one year. The trophy will be placed in competition annually.

Firing the opening gun in the final practice siege for the battle with Bethany courtmen here January 4, Coach Dutch Hermann drafted his first-string Lion quintet last night.

Although illness this summer has prevented Jack Mazess from rounding into proper condition, the speedy forward fills his regular berth at forward. Paired with Jack on the first quintet is Rod Fry, Fry was a member of the squad last year, and with Mazess makes a good scoring combination.

Hermann has placed Hamilton at center on the premier Nittany five. He has the ideal build for a pivot man and with experience should prove a capable center. With Captain Skip Stanley, regular guard, travelling west with the all-Eastern grid team, Hermann has either Ed Lee or Paul Moss as leading candidate for Skip's berth. The Lion mentor declared last night that it was a toss-up between Lee and Moss for the vacant post.

Also Selects Second Team Joe Weber is Hermann's choice as the other guard on the first five. On the second quintet, Wally Leyda is paired with Dave Miller at forward. Leyda's injured knee has been slowing him up slightly in practice but will probably improve before the season opens. The second team forwards are also fast and will press Mazess and Fry for the call in the first tilt.

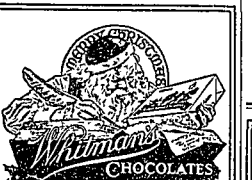
Red Brand will occupy the second team berth and is backed by Chuck Williams and either Moss or Lee at the guards.

### DRAFTSMEN WILL RECEIVE INSTRUCTION FROM COLLEGE

An eight-year course for draftsmen will be conducted by the engineering extension department at the Armstrong Cork company, Lancaster, announced High G. Pyle of the engineering extension department, Saturday. The course, first proposed by company officials, will be conducted by professors from the College at the Armstrong offices in Lancaster. Instructions will be offered in mathematics, drawing, mechanics, foundry practice, strength of materials, pattern making, fundamentals of machine design, welding, electricity, kinematics, hydraulics, and thermodynamics.

### 'AMERICA' TAKEN FROM CITY, MOUNTAIN, HISTORIAN STATES

It is the belief of Dr. Maximo Soto-Hall, Guatemalan historian, that the word "America" was derived from the ancient mountain of Amerique and the city of Americopan rather than from the explorer Amerigo Vespucci. "Americopan," the name given to a city near the fabled Eldorado, meant the principal city in America.




**SPECIAL CHRISTMAS BOXES**

also

**MARY LINCOLN CANDIES**

SAVE WITH SAFETY



Robert J. Miller

## 7 Nittany Booters Gain Posts on Coaches' All-American Selections

No less than seven members of Penn State's champion soccer team were named as All-Americans on team selections by various coaches last week. Coaches Stewart, of Penn, Nies, of Princeton, and McPete, of Haverford, each chose three Lions for their mythical eleven.

Coach Bill Jeffrey, with insight on the work of the intercollegiate league leaders, selected five Nittany booters to perform on his mythical team. All, left fullback, and Lutz, outside right, were honored by selection on all four elevens.

Lutz, and Frazier, of Haverford, who was named as the outstanding right fullback, were honored for the third successive year. McPete, Stewart, and Jeffrey named Harvey, Lion

backfielder as the All-American right fullback to replace Frazier. Nies, Princeton mentor, contrary to popular opinion of other coaches, voted McKune, Nittany goalie, the best guardian of nets in collegiate circles. In the belief that strong defensive work by the Lion backfield was responsible for keeping opponents limited to 3 goals during the season, coach Jeffrey placed Strmlin and Edgerton at left halfback and center-halfback, respectively, on his All-American eleven.

Anderson, Lion outside left, was named by Jeffrey for All-American lineman. Anderson's injured ankle during the middle of the season probably checked a performance which would have placed him among other selections.


Inter-unit court meet will begin next month. 13 Teams Enter Penn State Club Basketball Tournament. Beginning the second week in January, inter-unit basketball teams will begin a tournament of approximately ten games sponsored by the Penn State club.

A new system is being organized by which the teams will be divided into two leagues of equal size. Regularly scheduled games between teams in each league will supplant the bracket system used in past years. The winner of these league tilts will meet in the final bout to decide the championship of the tournament.

At present there are thirteen teams signed up for the tournament. Any non-fraternity man, regardless of class, is eligible to enter a team. Members of the freshman basketball team but must not enter as a team.

### YALE PURCHASES LAND SITE FOR ANTHROPOID APES STUDY

Aiming to study the breeding habits and social relations of anthropoid apes, Yale university has purchased two hundred acres of land near Orange Park, Florida. A gift of \$500,000 from the Rockefeller Foundation made possible the purchase of the site and the creation of the laboratory.



**SAWYER'S Rainwear**

FRIG BRAND SLICKERS

SAWYER'S Frig Brand Slickers have established a lasting reputation on the campus among well-dressed college men and women whose main concern is good appearance as well as long life are essential.

Sawyer's slickers are all-weather, roomy, well-ventilated, guaranteed to keep you absolutely dry and warm and are to be had lined or unlined. Lintless or flaps as you prefer in a wide variety of styles for every purpose. Your choice of colors. Shows everywhere carry them.

**H. M. SAWYER & SON**

EAST CAMBRIDGE, MASS.

**SPECIAL \$8.00 Desk Sets \$8.00**

Pen and Pencil Sets - \$6.00 to \$12.00

Pearl Seal Pins with S guard chain - \$10.00

Football and Basketballs with Valves

Special Price - \$3.50 and \$4.00

Latest Fiction and Children's Books

GIFTS OF ALL DESCRIPTIONS

**The Athletic Store**

On Co-Op Corner

## GRAPPLERS ADOPT NEW SCORING PLAN

Coach Speidle Discovers Talent In 165-Pound Rank—Drills Squad for Lay-off

Adoption of new scoring rules and the addition of a new division should produce renewed interest in wrestling this season according to Coach Charles Speidle, who is now engaged conditioning his squad preparatory to the Christmas lay-off.

The National Intercollegiate wrestling rules with a few minor changes have been adopted this year by the Eastern association. Under this system five points will be given for a fall, instead of the six last year, and three points will be scored for a decision.

In order to avoid the tiresome inactivity prevalent under the old rules a change has also been made in the method of conducting bouts. According to the new measures, if one man does not get behind in two minutes the bout is stopped.

Add New Class. There follows two four-minute periods with each man getting the aggressive position. If either contestant gets behind in two minutes, however, the bout continues for the full ten minutes. Two extra three-minute periods follow if neither man secures a time advantage.

Instead of the 158-pound class of former years, there will be a 155-pound and a 165-pound division this season. Coach Speidle is developing a number of men to fill in this new rank. Outstanding among the candidates so far this season for the post are Campbell, Long, Reybitz, and Parana.

ILLINOIS PROFESSOR WARNS AGAINST FALLING IN LOVE. "Whatever you do, don't fall in love," Dr. W. F. Peterson of the University of Illinois advised in a radio talk recently. Falling in love is worse than indigestion for a person of tubercular tendencies, he believes, declaring that worry is one real cause of fatigue.

OMEGA DELTA EPSILON WINS BRIDGE PRIZES. By defeating Sigma Alpha Epsilon in the final round of the interfraternity bridge tournament, Omega Delta Epsilon became the possessor of two trophies, one offered by Interfraternity council, to be kept permanently, and one offered by a local business firm to be held for a year.

In the semi-finals Omega Delta Epsilon won from Kappa Sigma while Sigma Alpha Epsilon defeated Beta Theta Pi. There were thirty-two entrants in the contest and three eliminations before the semi-final round.

ADOPTS NEW GRIDIRON RULE. A rule providing that all tie games be counted as half a game won and half a game lost for the competing teams, instead of not counting at all in figuring averages, was adopted by the Big Six conference meeting in Kansas City last Saturday.

INTERCOLLEGIATE BALL Pittsburgh CHRISTMAS NIGHT, DECEMBER TWENTY-FIFTH Music By Fletcher Henderson and Dewey Bergman Urban and Grand Ball Rooms - Wm. Penn Hotel! THE COUPLE, \$5.50

PASTRIES FOR HOLIDAY FESTIVITIES Decorated as you may choose for the Occasion THE ELECTRIC BAKERY 127 West Beaver Avenue

Xmas Candy Gifts The Largest Assortment We Pack Them and Mail Them "The Sweetest Place" GREGORYS

Let us supply you with Meats for your Christmas Banquets HIGH QUALITY MEATS FISHBURN'S MEAT MARKET Phone 357

**Merry Christmas**

PEOPLES NATIONAL BANK

South Allen Street

**SPECIAL \$8.00 Desk Sets \$8.00**

Pen and Pencil Sets - \$6.00 to \$12.00

Pearl Seal Pins with S guard chain - \$10.00

Football and Basketballs with Valves

Special Price - \$3.50 and \$4.00

Latest Fiction and Children's Books

GIFTS OF ALL DESCRIPTIONS

**The Athletic Store**

On Co-Op Corner

## GRAPPLERS ADOPT NEW SCORING PLAN

Coach Speidle Discovers Talent In 165-Pound Rank—Drills Squad for Lay-off

Adoption of new scoring rules and the addition of a new division should produce renewed interest in wrestling this season according to Coach Charles Speidle, who is now engaged conditioning his squad preparatory to the Christmas lay-off.

The National Intercollegiate wrestling rules with a few minor changes have been adopted this year by the Eastern association. Under this system five points will be given for a fall, instead of the six last year, and three points will be scored for a decision.

In order to avoid the tiresome inactivity prevalent under the old rules a change has also been made in the method of conducting bouts. According to the new measures, if one man does not get behind in two minutes the bout is stopped.

Add New Class. There follows two four-minute periods with each man getting the aggressive position. If either contestant gets behind in two minutes, however, the bout continues for the full ten minutes. Two extra three-minute periods follow if neither man secures a time advantage.

Instead of the 158-pound class of former years, there will be a 155-pound and a 165-pound division this season. Coach Speidle is developing a number of men to fill in this new rank. Outstanding among the candidates so far this season for the post are Campbell, Long, Reybitz, and Parana.

ILLINOIS PROFESSOR WARNS AGAINST FALLING IN LOVE. "Whatever you do, don't fall in love," Dr. W. F. Peterson of the University of Illinois advised in a radio talk recently. Falling in love is worse than indigestion for a person of tubercular tendencies, he believes, declaring that worry is one real cause of fatigue.

OMEGA DELTA EPSILON WINS BRIDGE PRIZES. By defeating Sigma Alpha Epsilon in the final round of the interfraternity bridge tournament, Omega Delta Epsilon became the possessor of two trophies, one offered by Interfraternity council, to be kept permanently, and one offered by a local business firm to be held for a year.

In the semi-finals Omega Delta Epsilon won from Kappa Sigma while Sigma Alpha Epsilon defeated Beta Theta Pi. There were thirty-two entrants in the contest and three eliminations before the semi-final round.

ADOPTS NEW GRIDIRON RULE. A rule providing that all tie games be counted as half a game won and half a game lost for the competing teams, instead of not counting at all in figuring averages, was adopted by the Big Six conference meeting in Kansas City last Saturday.

INTERCOLLEGIATE BALL Pittsburgh CHRISTMAS NIGHT, DECEMBER TWENTY-FIFTH Music By Fletcher Henderson and Dewey Bergman Urban and Grand Ball Rooms - Wm. Penn Hotel! THE COUPLE, \$5.50

PASTRIES FOR HOLIDAY FESTIVITIES Decorated as you may choose for the Occasion THE ELECTRIC BAKERY 127 West Beaver Avenue

Xmas Candy Gifts The Largest Assortment We Pack Them and Mail Them "The Sweetest Place" GREGORYS

Let us supply you with Meats for your Christmas Banquets HIGH QUALITY MEATS FISHBURN'S MEAT MARKET Phone 357

**Merry Christmas**

PEOPLES NATIONAL BANK

South Allen Street

**SPECIAL \$8.00 Desk Sets \$8.00**

Pen and Pencil Sets - \$6.00 to \$12.00

Pearl Seal Pins with S guard chain - \$10.00

Football and Basketballs with Valves

Special Price - \$3.50 and \$4.00

Latest Fiction and Children's Books

GIFTS OF ALL DESCRIPTIONS

**The Athletic Store**

On Co-Op Corner

## GRAPPLERS ADOPT NEW SCORING PLAN

Coach Speidle Discovers Talent In 165-Pound Rank—Drills Squad for Lay-off

Adoption of new scoring rules and the addition of a new division should produce renewed interest in wrestling this season according to Coach Charles Speidle, who is now engaged conditioning his squad preparatory to the Christmas lay-off.

The National Intercollegiate wrestling rules with a few minor changes have been adopted this year by the Eastern association. Under this system five points will be given for a fall, instead of the six last year, and three points will be scored for a decision.

In order to avoid the tiresome inactivity prevalent under the old rules a change has also been made in the method of conducting bouts. According to the new measures, if one man does not get behind in two minutes the bout is stopped.

Add New Class. There follows two four-minute periods with each man getting the aggressive position. If either contestant gets behind in two minutes, however, the bout continues for the full ten minutes. Two extra three-minute periods follow if neither man secures a time advantage.

Instead of the 158-pound class of former years, there will be a 155-pound and a 165-pound division this season. Coach Speidle is developing a number of men to fill in this new rank. Outstanding among the candidates so far this season for the post are Campbell, Long, Reybitz, and Parana.

ILLINOIS PROFESSOR WARNS AGAINST FALLING IN LOVE. "Whatever you do, don't fall in love," Dr. W. F. Peterson of the University of Illinois advised in a radio talk recently. Falling in love is worse than indigestion for a person of tubercular tendencies, he believes, declaring that worry is one real cause of fatigue.

OMEGA DELTA EPSILON WINS BRIDGE PRIZES. By defeating Sigma Alpha Epsilon in the final round of the interfraternity bridge tournament, Omega Delta Epsilon became the possessor of two trophies, one offered by Interfraternity council, to be kept permanently, and one offered by a local business firm to be held for a year.

In the semi-finals Omega Delta Epsilon won from Kappa Sigma while Sigma Alpha Epsilon defeated Beta Theta Pi. There were thirty-two entrants in the contest and three eliminations before the semi-final round.

ADOPTS NEW GRIDIRON RULE. A rule providing that all tie games be counted as half a game won and half a game lost for the competing teams, instead of not counting at all in figuring averages, was adopted by the Big Six conference meeting in Kansas City last Saturday.

INTERCOLLEGIATE BALL Pittsburgh CHRISTMAS NIGHT, DECEMBER TWENTY-FIFTH Music By Fletcher Henderson and Dewey Bergman Urban and Grand Ball Rooms - Wm. Penn Hotel! THE COUPLE, \$5.50

PASTRIES FOR HOLIDAY FESTIVITIES Decorated as you may choose for the Occasion THE ELECTRIC BAKERY 127 West Beaver Avenue

Xmas Candy Gifts The Largest Assortment We Pack Them and Mail Them "The Sweetest Place" GREGORYS

Let us supply you with Meats for your Christmas Banquets HIGH QUALITY MEATS FISHBURN'S MEAT MARKET Phone 357

**Merry Christmas**

PEOPLES NATIONAL BANK

South Allen Street

**SPECIAL \$8.00 Desk Sets \$8.00**

Pen and Pencil Sets - \$6.00 to \$12.00

Pearl Seal Pins with S guard chain - \$10.00

Football and Basketballs with Valves

Special Price - \$3.50 and \$4.00

Latest Fiction and Children's Books

GIFTS OF ALL DESCRIPTIONS

**The Athletic Store**

On Co-Op Corner

## GRAPPLERS ADOPT NEW SCORING PLAN

Coach Speidle Discovers Talent In 165-Pound Rank—Drills Squad for Lay-off

Adoption of new scoring rules and the addition of a new division should produce renewed interest in wrestling this season according to Coach Charles Speidle, who is now engaged conditioning his squad preparatory to the Christmas lay-off.

The National Intercollegiate wrestling rules with a few minor changes have been adopted this year by the Eastern association. Under this system five points will be given for a fall, instead of the six last year, and three points will be scored for a decision.

In order to avoid the tiresome inactivity prevalent under the old rules a change has also been made in the method of conducting bouts. According to the new measures, if one man does not get behind in two minutes the bout is stopped.

Add New Class. There follows two four-minute periods with each man getting the aggressive position. If either contestant gets behind in two minutes, however, the bout continues for the full ten minutes. Two extra three-minute periods follow if neither man secures a time advantage.

Instead of the 158-pound class of former years, there will be a 155-pound and a 165-pound division this season. Coach Speidle is developing a number of men to fill in this new rank. Outstanding among the candidates so far this season for the post are Campbell, Long, Reybitz, and Parana.

ILLINOIS PROFESSOR WARNS AGAINST FALLING IN LOVE. "Whatever you do, don't fall in love," Dr. W. F. Peterson of the University of Illinois advised in a radio talk recently. Falling in love is worse than indigestion for a person of tubercular tendencies, he believes, declaring that worry is one real cause of fatigue.

OMEGA DELTA EPSILON WINS BRIDGE PRIZES. By defeating Sigma Alpha Epsilon in the final round of the interfraternity bridge tournament, Omega Delta Epsilon became the possessor of two trophies, one offered by Interfraternity council, to be kept permanently, and one offered by a local business firm to be held for a year.

In the semi-finals Omega Delta Epsilon won from Kappa Sigma while Sigma Alpha Epsilon defeated Beta Theta Pi. There were thirty-two entrants in the contest and three eliminations before the semi-final round.

ADOPTS NEW GRIDIRON RULE. A rule providing that all tie games be counted as half a game won and half a game lost for the competing teams, instead of not counting at all in figuring averages, was adopted by the Big Six conference meeting in Kansas City last Saturday.

INTERCOLLEGIATE BALL Pittsburgh CHRISTMAS NIGHT, DECEMBER TWENTY-FIFTH Music By Fletcher Henderson and Dewey Bergman Urban and Grand Ball Rooms - Wm. Penn Hotel! THE COUPLE, \$5.50

PASTRIES FOR HOLIDAY FESTIVITIES Decorated as you may choose for the Occasion THE ELECTRIC BAKERY 127 West Beaver Avenue

Xmas Candy Gifts The Largest Assortment We Pack Them and Mail Them "The Sweetest Place" GREGORYS

Let us supply you with Meats for your Christmas Banquets HIGH QUALITY MEATS FISHBURN'S MEAT MARKET Phone 357

**Merry Christmas**

PEOPLES NATIONAL BANK

South Allen Street

**SPECIAL \$8.00 Desk Sets \$8.00**

Pen and Pencil Sets - \$6.00 to \$12.00

Pearl Seal Pins with S guard chain - \$10.00

Football and Basketballs with Valves

Special Price - \$3.50 and \$4.00

Latest Fiction and Children's Books

GIFTS OF ALL DESCRIPTIONS

**The Athletic Store**

On Co-Op Corner

## GRAPPLERS ADOPT NEW SCORING PLAN

Coach Speidle Discovers Talent In 165-Pound Rank—Drills Squad for Lay-off

Adoption of new scoring rules and the addition of a new division should produce renewed interest in wrestling this season according to Coach Charles Speidle, who is now engaged conditioning his squad preparatory to the Christmas lay-off.

The National Intercollegiate wrestling rules with a few minor changes have been adopted this year by the Eastern association. Under this system five points will be given for a fall, instead of the six last year, and three points will be scored for a decision.

In order to avoid the tiresome inactivity prevalent under the old rules a change has also been made in the method of conducting bouts. According to the new measures, if one man does not get behind in two minutes the bout is stopped.

Add New Class. There follows two four-minute periods with each man getting the aggressive position. If either contestant gets behind in two minutes, however, the bout continues for the full ten minutes. Two extra three-minute periods follow if neither man secures a time advantage.

Instead of the 158-pound class of former years, there will be a 155-pound and a 165-pound division this season. Coach Speidle is developing a number of men to fill in this new rank. Outstanding among the candidates so far this season for the post are Campbell, Long, Reybitz, and Parana.

ILLINOIS PROFESSOR WARNS AGAINST FALLING IN LOVE. "Whatever you do, don't fall in love," Dr. W. F. Peterson of the University of Illinois advised in a radio talk recently. Falling in love is worse than indigestion for a person of tubercular tendencies, he believes, declaring that worry is one real cause of fatigue.

OMEGA DELTA EPSILON WINS BRIDGE PRIZES. By defeating Sigma Alpha Epsilon in the final round of the interfraternity bridge tournament, Omega Delta Epsilon became the possessor of two trophies, one offered by Interfraternity council, to be kept permanently, and one offered by a local business firm to be held for a year.

In the semi-finals Omega Delta Epsilon won from Kappa Sigma while Sigma Alpha Epsilon defeated Beta Theta Pi. There were thirty-two entrants in the contest and three eliminations before the semi-final round.

ADOPTS NEW GRIDIRON RULE. A rule providing that all tie games be counted as half a game won and half a game lost for the competing teams, instead of not counting at all in figuring averages, was adopted by the Big Six conference meeting in Kansas City last Saturday.

INTERCOLLEGIATE BALL Pittsburgh CHRISTMAS NIGHT, DECEMBER TWENTY-FIFTH Music By Fletcher Henderson and Dewey Bergman Urban and Grand Ball Rooms - Wm. Penn Hotel! THE COUPLE, \$5.50

PASTRIES FOR HOLIDAY FESTIVITIES Decorated as you may choose for the Occasion THE ELECTRIC BAKERY 127 West Beaver Avenue

Xmas Candy Gifts The Largest Assortment We Pack Them and Mail Them "The Sweetest Place" GREGORYS

Let us supply you with Meats for your Christmas Banquets HIGH QUALITY MEATS FISHBURN'S MEAT MARKET Phone 357

**Merry Christmas**

PEOPLES NATIONAL BANK

South Allen Street

**SPECIAL \$8.00 Desk Sets \$8.00**

Pen and Pencil Sets - \$6.00 to \$12.00

Pearl Seal Pins with S guard chain - \$10.00

Football and Basketballs with Valves

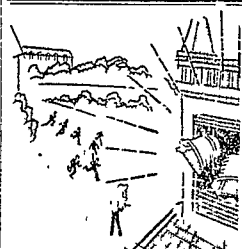
Special Price - \$3.50 and \$4.00

Latest Fiction and Children's Books

GIFTS OF ALL DESCRIPTIONS

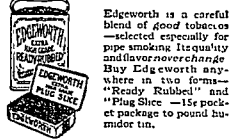
**The Athletic Store**

On Co-Op Corner



To pipes, Men, to Pipes!

TRADITION has it that ye shall know the fellowship of those with seasoned, masculine, melon men of every age and degree. Some try to join this brotherhood, yet fail, and are rebuffed as born to pipeless lives. But honest effort is required—each man's own test with good tobacco in a good pipe. That is the formula. Both pipe and tobacco must be good. The pipe must be pure of bowl, and the tobacco must be— Well, Edgeworth, if you'll permit—good old Edgeworth, Class of '04. Tried Edgeworth yet? Now's your chance! Use the magic coupon, and we'll rush right back to you a free-for-nothing packet of genuine Edgeworth to fill your good pipe with.



EDGEWORTH SMOKING TOBACCO LARUS & BRO CO 100 S 22d St, Richmond, Va I'll try your Edgeworth. And I'll try it in a good pipe. Name: Street: Town and State: Now let the Edgeworth come!



Drink **Coca-Cola** Delicious and Refreshing

**PAUSE AND REFRESH YOURSELF**

AND ANYBODY WHO EVER RAN AFTER A TRAIN THAT WAS GOING FASTER THAN HE WAS KNOWS THERE IS NOTHING ELSE TO DO BUT.

Run far enough, work long enough, play hard enough and you've got to stop. That's when the pause that refreshes makes the big hit. Happily you can find it around the corner from anywhere, waiting for you in an ice-cold Coca-Cola, the pure drink of natural flavors that makes any little minute long enough for a big rest.

The Coca Cola Co., Atlanta, Ga.

OVER 8 MILLION A DAY

YOU CAN'T BEAT THE PAUSE THAT REFRESHES

IT HAD TO BE GOOD TO GET WHERE IT IS