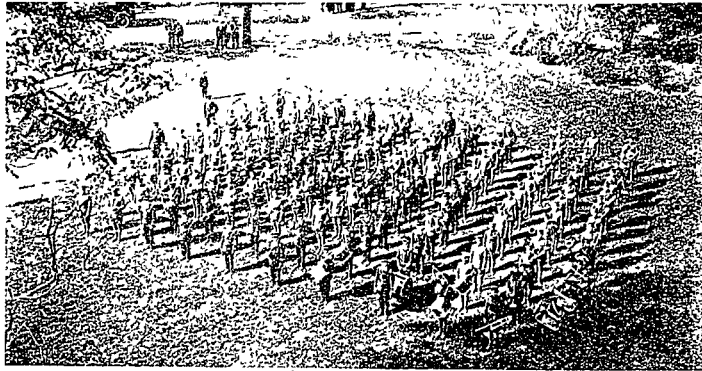


PROMINENT SCIENTIST



Dr. Gerald C. Wendt

COMBINED COLLEGE AND BLUE BANDS



HURRAH FOR THE CO-EDS!!!



Miss Decker

Miss Wentz

Miss D'Omer

COLLEGE BANDMASTER



Bandmaster W. O. Thompson

DIRECTOR OF PLAYERS



Arthur C. Cloetngh

The freshman and sophomore divisions of this group combine with the famous Blue Band for important home football games. Each unit plays individually for other athletic contests as well as military drills. The Blue Band accompanies military & drill teams to important encampments on foreign soil as well as, offering several concerts during the College year. The combined units are under the direction of Major Wilfred O. Thompson.

TAXI SERVICE

Night and Day

SPECIAL TRIPS CAN BE ARRANGED FOR

H. K. RESIDES

Bell Phone 196

Office Phone 759

GLEE CLUB DIRECTOR



Richard W. Grant

We Extend Our Welcome To You

WE SPECIALIZE TO FRATERNITIES LET US CATER TO YOU THIS YEAR. OUR MEATS ARE OF HIGH QUALITY AT REASONABLE PRICES

All Western Government Inspected Meats

Fishburn's Meat Market

Phone 357

Opposite Post Office

Welcome Penn State Students

A Complete Showing of

Electrical Appliances

Hardware

Toilet Goods

Dry Goods

Fresh Candies Daily



South Allen Street

State College, Pa.

A Quarter of a Century of Pioneering!

1904

1929

Students in College - - - - 600

Students in College - - - - 4000

Population in Town - - - - 600

Population in Town - - - - 4000

Capital Stock - - - - - \$25,000

Capital Stock - - - - - \$ 200,000

Resources - - - - - \$50,000

Resources - - - - - \$2,500,000

We Solicit Your Banking Business on the Basis of SERVICE Which Has Made Possible The Above Record

1. A check as a legal receipt for the payment of accounts.
2. Your money safeguarded from loss by theft or fire.
3. Training in Banking Practice and Business Methods.
4. Building a credit background which will be of high value for the future.

THE FIRST NATIONAL BANK OF STATE COLLEGE  
STATE COLLEGE, PA.

SERVICE

STABILITY

SECURITY