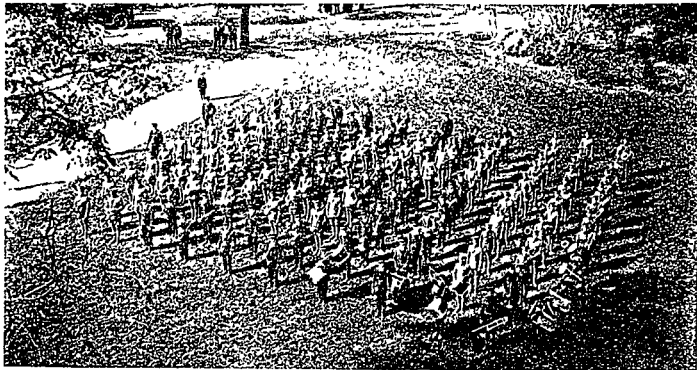


PROMINENT SCIENTIST



Dr. Gerald C. Wendt

COMBINED COLLEGE AND BLUE BANDS



The freshman and sophomore divisions of this group combine with the famous Blue Band for important home football games. Each unit plays individually for other athletic endeavors as well as military drills. The Blue Band accompanies Nutany g idion teams to important en-ances on foreign soil as well as offering several concerts during the College year. The combined units are under the direction of Major Wilfred O. Thompson

HURRAH FOR THE CO-EDS!!!

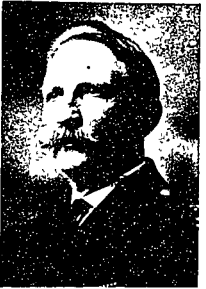


Miss Derser

Miss Wentz

Miss D'Oier

COLLEGE BANDMASTER



Bandmaster W. O. Thompson

DIRECTOR OF PLAYERS



Arthur C. Cloetingh

**TAXI SERVICE**  
Night and Day  
SPECIAL TRIPS CAN BE ARRANGED FOR  
**H. K. RESIDES**  
Bell Phone 196 Office Phone 750

GLEE CLUB DIRECTOR



Richard W. Grant

**We Extend Our Welcome To You**  
WE SPECIALIZE TO FRATERNITIES LET US  
CATER TO YOU THIS YEAR. OUR MEATS ARE  
OF HIGH QUALITY AT REASONABLE PRICES  
All Western Government Inspected Meats  
**Fishburn's Meat Market**  
Phone 357 Opposite Post Office

*Welcome Penn State Students*  
A Complete Showing of  
**Electrical Appliances**  
Hardware  
Toilet Goods Dry Goods  
Fresh Candies Daily

South Allen Street State College, Pa.

# A Quarter of a Century of Pioneering!

1904	1929
Students in College - - - - 600	Students in College - - - - 4000
Population in Town - - - - 600	Population in Town - - - - 4000
Capital Stock - - - - - \$25,000	Capital Stock - - - - - \$ 200,000
Resources - - - - - \$50,000	Resources - - - - - \$2,500,000

*We Solicit Your Banking Business on the Basis of SERVICE  
Which Has Made Possible The Above Record*

1. A check as a legal receipt for the payment of accounts.
2. Your money safeguarded from loss by theft or fire.
3. Training in Banking Practice and Business Methods.
4. Building a credit background which will be of high value for the future.

**THE FIRST NATIONAL BANK OF STATE COLLEGE  
STATE COLLEGE, PA.**

SERVICE

STABILITY

SECURITY