

The "Y" Supplement

LYTLE CABIN OPEN FOR STUDENT USE W. C. CALHOUN '25 REMAINS AS FRESHMAN SECRETARY

SPENDS FULL TIME WITH ORGANIZATION OF FIRST-YEAR MEN

Has Office Hours for Interviews With Yearlings—Leads to Close Acquaintance

1930 CABINET WILL BE CHOSEN IN FEW WEEKS

Bible Study Groups Formed for Creative Discussion of College Issues

As the class of 1930 makes its plunge into college life at Penn State, Freshman Secretary W. C. Calhoun '25 enters upon the second year of his work. He will devote all his time to organizing the "Y" group from the yearling class, including daily scheduled interviews with the first-year men.

Last year as part time secretary, Calhoun saw personally more than seven hundred of the class of 1929. In commenting on his work for the present year and tentative plans for the freshman, Calhoun said:

"Despite the fact that incoming freshman classes of the past few years have been hailed as being increasingly better, the details connected with their first few days on the campus have caused them less perplexity, and the problems of the first year of college life have become fewer and easier of solution.

"For a long time the Penn State Christian Association has earnestly tried to render First Aid to Freshmen in every way possible during the opening of College, and throughout the



W. C. Calhoun '25

whole year. The letters of welcome and the Student Handbooks which are sent out before the new students leave home are advance agents of hospitality. The freshman reception on the front campus has become a tradition, and the whole student body, as well as many of the faculty, look forward to that event.

(Continued on following page)

Extension Workers Will Enter New Field With Boy Scout Organization

With the advent of greater opportunities than ever before for extension Sunday Schools, William Hockenberry '28, in charge of this division of the "Y" work, has entered the field of Boy Scout organization and Junior Project work. He comments upon the extension work as follows:

"During the College year the extension service group of the Y. M. C. A. with the aid of the Y. W., is busily

(Continued on following page)

1926-27 BUDGET	
Contributions	
Lytle Cabin	\$1000
Colored Work in South	500
State Y. M. C. A.	100
Nat'l. Coun. Y. M. C. A.	140
Extension	500
Books and Magazine	200
Cabinet Expenses	100
Conferences	400
Freshman Reception and other work	375
Campus Service	125
Social	100
Office Expenses	400
Building Equipment	150
Speakers	600
Total	\$1690

Y. W. TO DRIVE FOR \$500 FUND

Solicitors To Ask One Dollar From Every Woman To Carry on Work

CONTEMPLATE MEETINGS ON EAGLESMERE PLAN

Canvassing all women students in the college, the Y. W. C. A. begins today a campaign for funds to complete their budget for 1926-27. The Y. W. received this year \$260 of the blanket tax, and one dollar from each woman is expected to furnish sufficient money for the following activities, in these proportions: national obligations—25%; social activities—20%; student work—20%; conferences—25% and women's handbook—10%.

Sending delegates to the Eaglesmere Conference has for many years been a policy of the Y. W. C. A., but the institution of Freshman Week and the necessity for paying the expenses of the cabinet members who return for it, has cut short the amount the Y. W. could spend in sending delegates to Eaglesmere. If the campaign this year is successful the local organization hopes to send other members in addition to the one sent last June.

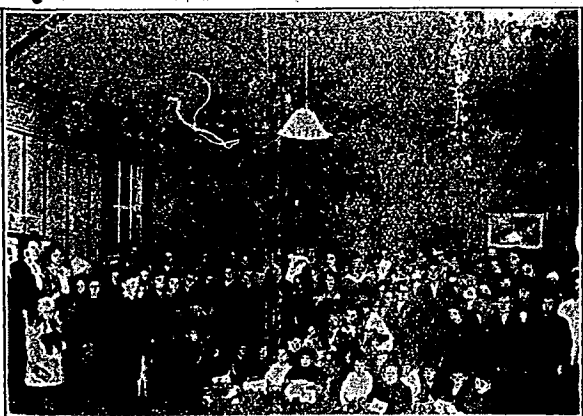
Miss Helen George '28, vice president of the Y. W. C. A., and acting president for the year in the absence of Miss Edith Oehme '27, president, hopes to use in the work on the campus this year the plan for meetings which was outlined at Eaglesmere last June. Short meetings will be held every Wednesday and an effort will be made to have speakers of interest to everyone, and special music every week. Mrs. Kitchen, national secretary of the Y. W. C. A., will be located at State College after Christmas. With her help, the cabinet hopes to increase student interest in the Y. W. C. A.

Freshman Reception Made Popular Here

With the front campus brightly lighted for the occasion and decorated with blue and white streamers and Japanese lanterns, the class of 1930 was given its official welcome to Penn State through the efforts of the Y. M. C. A. in staging the freshman reception which has become a firmly established tradition on the campus.

Booths forming a "who's who" contain men prominent in student activities and add to the value of the affair. For the past two years it has been aided much by the help of the women students through the Y. W. C. A.

Christmas Party—1924



Gathering of Extension Sunday School Children

Y. M. C. A. BEGINS DRIVE TONIGHT TO MEET BUDGET OF \$4750 FOR THIS YEAR

Beginning this evening at eight o'clock the Penn State student Y. M. C. A. will open its three-day financial campaign to cover a budget for \$4750 under the direction of J. G. Hesse '27 who has complete charge of both the oratorical and athletic divisions of the campaigns. Heading the orators is S. L. Reeder '27 while the Athletes will be led to the fray by K. R. Weston '27.

Hesse has divided his working units into captains and lieutenants. For the national fraternities, Captain R. A. McQuade '27 with Lieutenants J. M. Russel '27, B. C. Wharton '27 and K. B. Donaldson '27, and Captain G. M. Harris '27 with Lieutenants J. C. Belfield '28, M. E. Hinkle '27, F. E. Ulf '27 and C. E. McFaden '27 will canvass with the aid of men chosen from each chapter house.

Local Fraternities

Captain A. C. Alloway '27 with the aid of Lieutenants W. E. Phillips '27,

G. P. Lippincott '27 and S. H. Culp '27 will have charge of soliciting from the local Greeks. B. C. Conrad '27 and the members of the cabinet form the organization which will canvass the faculty. This group has set its goal at one thousand dollars.

The non-fraternity students have been divided into sections which correspond to the fire districts and will be covered by Captains H. S. Buck '27, J. M. Stazewski '27, H. V. Gerding '27 and H. G. Womsey '27. Buck will be aided by Lieutenants P. A. McWilliams '28 and H. E. Blankenhiller '28 with the sophomore cheerleaders for men.

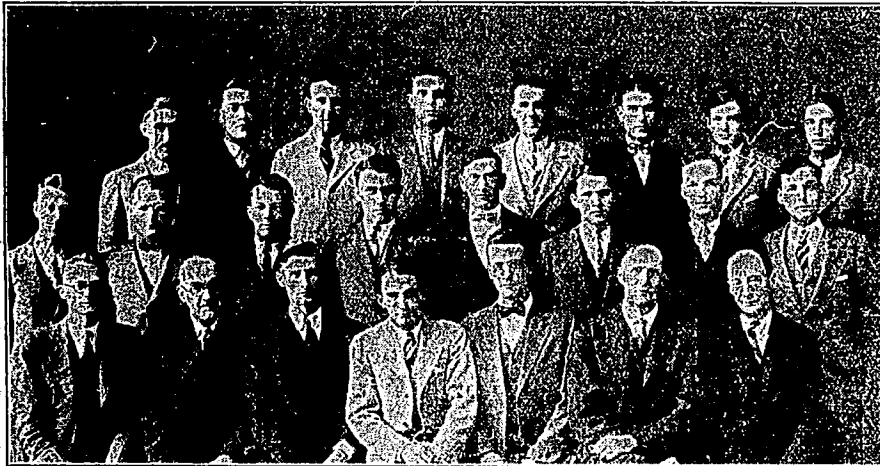
Lieutenants W. H. Royer '27, H. R. Sherrad '29 and O. A. Burgess '27 are organized with Stazewski. Gerding will be assisted by Lieutenants C. D. Ubel '27, D. K. Hendrix '27 and W. S. Liggett '27. Womsey's aides are E. L. Spitzer '27 and A. B. Angney '27. The captains and lieutenants met

with Secretary Kitchen and Hesse for discussion of organization details last night.

Immediately before the men go into the canvass, there will be a bean supper at the University Club where the whole organization will assemble at six-fifteen o'clock. H. O. Smith will give a short talk on the sales points and how to handle certain problems. Dean R. L. Watts is scheduled for a "pep" talk. Hesse will then give out the cards with instructions.

All cards for the men have been placed in envelopes with mimeographed sales points on them. The captains will have a complete list of the names given to their men. To solicit students who are missed, a clean-up squad will be organized from the men who finish Tuesday evening. The squad goes into action tomorrow and the whole campaign will close Thursday.

Recent Picture of Senior Y. M. C. A. Cabinet



M. M. HARRIS APPRAISES VALUE OF "Y" OBJECTIVE

In order to set forth clearly the objective of the Y. M. C. A. Cabinet for the present year, a creed was formulated. Professor M. M. Harris did much in wording the purpose and he has commented on the creed in the following:

"To realize in our lives the desire for the richest way of life, and to invite others to join us in the attempt to find life at its best."

At an all day "retreat" of the Penn State "Y" cabinet and a few sympathetic friends last June, the statement above was, after much deliberation, adopted as a statement of the objective of the Penn State branch of the Student Young Men's Christian Association for the present College year. This is the whole platform. It is capable of wide interpretation; it is worthy of your consideration and support.

Desire Universal

The desire and the quest for riches is universal, and the gratification of the desire manifests itself in various ways, according to the different opinions men hold about what constitutes riches. The savage and the barbarian set value upon trinkets, ornaments, personal adornments which to us seem bizarre; men of a higher degree of civilization count their riches in flocks and herds; others, more civilized still, acquire vast tracts of land; others again, heap up money for its own sake, or for the sake of the material possessions and physical luxuries that money will buy.

A few there are who gratify their craving for wealth by the pursuit of knowledge, and lay up rich stores of learning to enjoy in the mind and soul. Another group of men, paradoxically called "the poor in spirit," store up the riches of the soul—invisible, intangible, but just as real as are the possessions of those who know wealth only as material.

Closely Related

So closely do the riches of the mind and of the soul resemble each other and supplement each other that it is not easy to separate the two. I shall not attempt to do it. In each realm

the riches which men may have, if men strive for them, are not material. And just as the colleges seek not to furnish the youth, with material wealth nor necessarily with the means of acquiring it, but rather to make him rich with a well trained and a well stored mind and a soul attuned to harmonies above the earthly, so the colleges must furnish also the means of coming into contact with and of acquiring a wealth of the soul's life.

This desire for a rich way of life that shall be apart from material things is present in some degree in most civilized men, but the desire is most earnest in the hearts of a student body during the four or five years when students are, with more or less diligence, seeking the wealth that is not material, and the value of which can not be estimated by any monetary system.

Organization Worthy of Support

That organization which sets before it as its goal the ambition to bring this almost universal desire of the student up to the plane of a reality, of an acquisition, an attainment, and which also seeks to share the richest way of life with others is worthy of encouragement and support on every campus.

In the privately endowed colleges the helpful organization is the church or some arm of the church. In the state colleges, where no religious body may be permitted to exert influence in competition with any other, but where interdenominationalism exists at its best, the Young Men's Christian Association, especially on the Penn State campus, has both a unique opportunity and a peculiar function. The opportunity lies, not in the number of religious gatherings that may be assembled, however beneficial they are, but in the inspiring contacts that may be made through the association, between the finest, highest, richest type of spiritual attainments and those who are seeking and finding "life at its best." The function of the "Y" is to meet that opportunity.

It is gratifying to note that our

(Continued on following page)

Henry Van Dusen Listed For Three-day Meeting With Student Leaders

Taking the place of Bruce Curry for the Penn State student body, Henry Van Dusen, of Union Theological Seminary, New York City, will visit the campus for a three-day discussion conference, at which time an attempt will be made to assemble leading students in all campus activities to meet with him.

The three-day conference will mark the opening of the general campus-wide discussion groups which will take up the questions which are thought to be most pertinent after the gathering has thrashed out several perplexing problems on both student and campus life.

Henry Van Dusen is the youngest member of the faculty at the seminary. He has had a brilliant record as a student in Princeton, Aberdeen, Scotland; and finally at Union seminary from which he was graduated with honors. His scholarship and his personality fit him admirably for work among the students.

For the past two years, Van Dusen has visited all parts of the United States, conducting conferences of students in search of life at its best. He comes to Penn State with this experience from other colleges as a background. He will do from a younger man's viewpoint what Bruce Curry did last year.

Lost and Found, Room, And Job Service Part Of Work of Y. M. C. A.

Have you lost your fountain pen? Do you want a room for someone over Alumni Day or Pennsylvania Day? Would you like to work somewhere that morning or afternoon you have no classes?

All students know about the service the "Y" renders at the beginning of each year in finding rooms and boarding places for new men. This service is maintained throughout the year and every effort is made to keep on hand lists of rooms available over week-ends and for special occasions.

SENIOR "Y" CABINET

- R. D. Dundore '27, President
- S. L. Reeder '27, First vice-president
- B. T. Conrad '27, Second vice-president
- W. S. Seibert '28, Secretary
- A. C. Alloway '27, Treasurer
- G. M. Harris '27, Meetings
- R. B. Donaldson '27, Deputation
- F. E. Ulf '27, Discussions
- L. R. Plotts '27, Entertainment Course
- G. F. Fisher '27, Handbook
- William Hockenberry '28, Sunday School Extension
- J. C. Belfield '28, Freshmen Members at Large
- Members at Large
- R. D. George '27
- D. K. Hendrix '27
- L. T. Denniston '27
- L. L. Gwin '28
- H. E. Mulvaney '29
- H. L. Connaway '29
- C. B. Lane '29

"Y" TAKES FIRST STEP TO ERECT A CHAIN OF CABINS

Assumes Lead After Donation of Plot in Shingletown Gap By "Andy" Lytle

AVAILABLE TO ANY GROUP ON REQUEST AT OFFICE

Outing Club Gives Valuable Aid In Soliciting Contributions During Construction

After the lapse of nearly three years since "Andy" Lytle gave a plot of ground in the Shingletown Gap for erection of a cabin, that cabin is now open for the use of the Penn State student body. Through the initiative of the Y. M. C. A. enough money was raised to make a start on the first of a proposed string of cabins through the mountains to the South of the town.

The Lytle Memorial cabin will be given over freely to the use of any campus or student organization which makes the request. A catalogue of dates is kept and arrangements for the building can be made with the business secretary, C. L. Fritz. The Y. M. C. A. acts in the role of custodian. Along with the triangle workers the Outing Club and the Penn State Club have done much to make the structure possible.

The cabin itself is an L-shaped building of two units, each twenty by thirty feet. There is in the east end of the cabin a fireplace which is doubtless with one which opens of the east porch. The kitchen is equipped with a smaller fireplace on the north side of the structure, while in front there is a ten-foot porch, along the entire

DISCUSSION GROUPS PROVE SUCCESSFUL

F. E. Ulf '27 Outlines Extensive Program—Visitors To Be Consulted Often

VAN DUSEN CONFERENCE WILL MARK BEGINNING

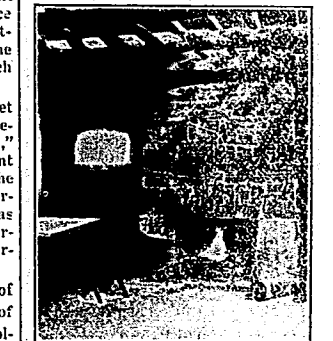
Three years ago Penn State made its first attempt to hold discussion groups among the entire student body for the consideration of questions pertinent to college men in their relation to the college authorities and their fellow men. Much of its success can be attributed to the ability of Bruce Curry who fired the little group with the ambition and the possibilities of the work.

An extensive organization was used for the first year but after thorough consideration, those in charge thought it advisable to try a different scheme last year. The conference which Bruce Curry held was conducted on the Penn State campus. The result is evident from the topics which were discussed.

Such issues as "What do we get out of College?", "The relation between college men and women," "Compulsory Chapel" and "Student Government" found their way to the groups. The extensiveness of the organization for the coming term has not been decided but will be determined after the Van Dusen conference.

F. E. Ulf '27, who has charge of the work, is considering the idea of interviews with men visiting the College in the capacity of Chapel speakers, lecturers and entertainers. Views of outside men on college life and problems will be brought before the groups and it is expected that problems on other campuses can be compared through this method.

Various student leaders will be asked to take charge of the discussions from time to time. When it is not possible for the entire group of leaders to meet with the visitor, one or more men will be delegated to confer with the College guest. By this plan, the student groups will benefit from the report of the interviewer who will present the ideas and thoughts that he has gathered.



East End Fireplace

length of the section—thirty feet. A rustic appearance has been created throughout the work. The beam ceiling gives the effect of a log cabin and is one of the outstanding features of it. The outside of the building is of native limestone, adding much to its attractiveness. The upstairs is divided into two sections. This provides for mixed parties, which must likewise receive the sanction of the "Y".

With an elevation of more than a hundred feet higher than that of the campus, many fine views of the Nittany Valley are available. Pictures of the west end and south side and the east end fireplace appear in another part of the SUPPLEMENT.

Exterior View of Lytle Cabin

