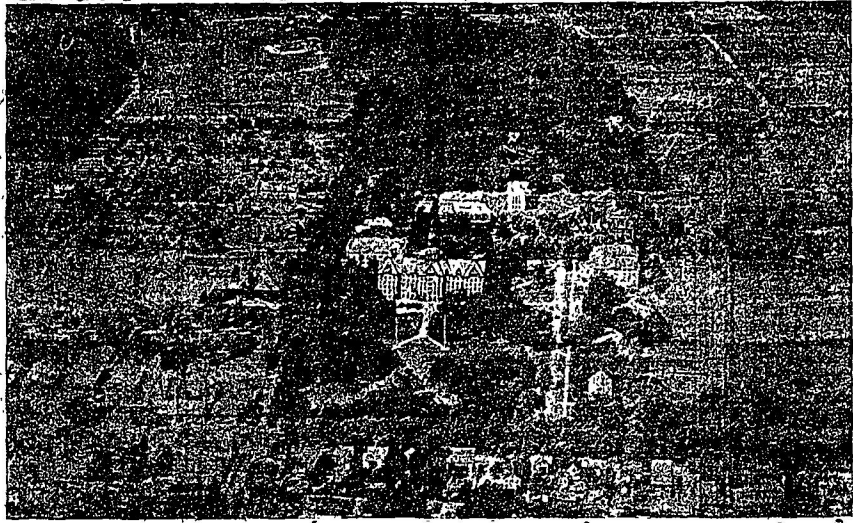


THE PENN STATE OF TODAY



This Photograph, Taken From an Aeroplane, Shows the Pittsburg Campus as it Appears Today. Penn State Supporters are Striving to Bring About Many Needed Improvements.

A Survey Made of "The Penn State of Today"

The campus of the Pennsylvania State College cover 200 acres and on it are located forty buildings for instructional, research, extension and residence uses.

The School of Agriculture gives instruction in ten curricula to about 250 students, the School of Education has five courses and 350 students, the School of Engineering ten courses and 1160 students, the School of Liberal Arts three courses and 773 students, the School of Mines four courses and 175 students, the School of Chemistry and Physics five courses and 313 students.

Not an Ag College

Contrary to the general belief of many that Penn State is wholly an agricultural college, it will be seen that other schools far overbalance that branch in the number of students enrolled, engineering having more than twice as many as agriculture.

Every county in Pennsylvania is represented in the student body at Penn State. There are 133 members of the faculty and 321 men and women engaged in research and extension work, including county agents in 64 of the 67 Pennsylvania counties.

The Pennsylvania State College was chartered in 1855 as "The Farmers' High School" in a period when national leaders were beginning to see the advisability of applying scientific principles to agriculture.

"The leading object shall be, without excluding other scientific and classical studies and including military tactics, to teach such branches of learning as are related to agriculture and the mechanic arts. In order to promote the liberal and practical education of the industrial classes in the several pursuits and professions of life."

This act was accepted by the State Legislature of 1863 and "the faith of the State was pledged" to carry the same into effect. The federal lands allotted to Pennsylvania were sold for \$500,000 and the income from this fund, together with state and federal appropriations over two years, supply the college with operating funds. The state appropriations limit the

Points of Interest

Old Main—The five story limestone structure in the center of what is known as the "Front Campus" it predominate the landscape from all sides. It was started in 1878, three years after the institution was chartered, built from native stone quarried on the campus, and finished in 1881. For some years it was the only building at the college and received the first group of 69 students. It is now used as the general college administration building and for class rooms.

Auditorium—Built in 1902-03 by Charles M. Schwab. Used for college chapel, daily and Sunday, and for meetings, plays, entertainments. Seats about 1200, less than half of student body.

Carnegie Library—Built in 1903-04. Contains over 85,000 volumes and is considered far too small for convenient student body and faculty use.

Frederick Waifs Hall—New dormitory for men completed in October, 1923. Houses 110 students. Next to it is "University Hall" where Penn State athletes will be housed upon completion next September. This building is the first to be erected through the college emergency building fund drive for \$2,000,000 for student health and welfare buildings.

New Beaver Field—Turf football field.

A good place to eat THE PENN STATE CAFE

University Club mark the location of the college broadcasting and wholesaler station. The station is known as WFLA and from last January to June broadcast programs every Monday, Wednesday and Friday night. It has a 500 watt input and a distance record of 1900 miles to Prescott, Ariz. within a few hundred miles of the Pacific Coast. Student operators are engaged and the Department of Electrical Engineering supervises the station with the Department of Public Information. (Continued on last page)

HOME COOKED FOODS DINNER 50c Let us pack you a delicious lunch for Saturday's picnic. Sandwiches of all kinds. Telephone your order. NITTANY LION TIA ROOM, 228 W. College Ave. Commercial Phone

Dollar Day We are participating and you will be surprised at some of the values we are offering for this day only.

"CRABTREE'S" Jewelry and Gifts

College Seal Jewelry Whitman's Chocolates Day Dream Face Powder Stationery Fountain Pens Ice Cream and Soft Drinks

RAY D. GILLILAND DRUGGIST West College Avenue

Come in and get acquainted. Cleaning and Pressing Best of Service Gernerd Tailor Shop S. Allen St.

Let's sweeten your journey and add romance to your trip. A dollar box of Romance chocolates to every lady customer. Rent a car and Drive-it-yourself—see ad. DRIVE-IT-YOURSELF AUTO CO. 116 McAllister St. Bell Phone 376

CORA B. SNYDER LADIES' FURNISHINGS ART. GOODS 2nd Floor People's Nat. Bank Bldg.

COLLEGE ICE CREAM AT "THE COOLEST SPOT IN TOWN" SERFAS '23 136 Allen St. Confectionery and Tobacco

Walk-Over's Fiftieth Anniversary Ubiquitous! The tailored pump You see them everywhere—tailored pumps—many of them so much alike that the tailored look is almost a uniform. It would be, except for the wide range of unusual styles in Walk-Over tailored pumps, such as the Rosita. Tailored pump of satin—a new Fifteenth Anniversary style. \$9.00 "AL'S" SHOP Allen Street

Latest in Penn State Seal Jewelry THE ATHLETIC STORE On Co-Op. Corner

HEMSTITCHING PLEATING DRESSMAKING SATISFACTION GUARANTEED Elizabeth J. Winter Miss Elizabeth Evey Second Floor Peoples National Bank

DANCE Phi Delta Theta House Friday, July 18 Dancing 8 to 12 Admission \$1.50

Eat Ice Cream Every Day It's a Health Food. ASK FOR HARVEY'S "The Better Kind" Bread Rolls and Cakes of Quality 220 E. College Ave. Phone 211

Don't Fail To See Our Window Schlow's Quality Shop

FASHION SHOP'S DOLLAR DAY SPECIALS 2 \$1 Four-in-Hand Ties \$1 \$2, \$2.50 and \$3 Shirts, Special lot \$1 Assorted Lot Hose Values 40c to \$1 4 pair \$1 Assorted Soft Collars 6 for \$1 \$2 and \$2.50 Caps \$1 Assorted Golf Hose \$2 and \$3 values \$1 Assorted Lot Hats \$1 Any Straw Hat \$1 SPECIAL FOR DOLLAR DAY ALL COAT SWEATERS 1-2 PRICE GLUNK & STUART