

### LOCAL SCIENTISTS HEAR DR. HAM ON RELATIVITY

Experiments Conducted by Head of Physics Dept. do not Confirm Einstein's Theory

Dr. W. R. Ham, head of the Department of Physics recently addressed the Penn State Branch of the American Association for the Advancement of Science, on the subject "Experimental Evidence for and Against the Variation of Mass with Velocity and Its Bearing on the Special Theory of Relativity".

"In our appreciation of the work in pure science carried out in various parts of the world, let us not overlook the researches conducted by members of our Local Association. Armsby and Frear left behind them an enviable record for promoting that type of fundamental research which a college or university should seek to foster.

"There are a number of important research projects now under way at this college, some having been in progress for many years. Without detracting from the value to science of any of these, the outstanding piece of investigational work in pure science now in progress at the Pennsylvania State College is being conducted by Dr. Ham. It bids fair to attract attention far beyond the circle of our Local Branch. So far as we can learn Dr. Ham is the foremost investigator in putting to experimental test some of the various theories relating to relativity. The scope of his investigation is concisely covered by the title of the address, "Experimental Evidence For and Against the Variation of Mass with Velocity, and Its Bearing on the Special Theory of Relativity".

"So far as all electro-magnetic experimental data are concerned and probably as far as all optical experimental data are concerned a great simplification is brought about by the theory that requires (A) that the force exerted by an electrical field approaches zero as the velocity of the electron approaches the velocity of light, rather than (B) the mass approaches infinity as the velocity of the electron approaches the velocity of light; force and mass being defined from an energy standpoint. The Relativity Theory of Ritz is based on A, that of Einstein gives results B."

"Attention should be called to the revolutionary nature of the conclusions of Ham, namely, that at least so far as electro-magnetic data is concerned, there appears to be no variation of mass and hence this data cannot be used to confirm the Einstein theory. However, it should be remarked that the ideas of relativity are by no means discarded but simply that a different form of the theory is indicated.

"In order to get an idea of the experimental work upon which the work of Ham is based, it is necessary to read the abstract which may be obtained from the secretary of our local section, Dr. J. B. Hill.

### CAMBRIA STEEL MEN TO LEARN BUSINESS ENGLISH

Beginning with "The Principles of General Composition" the Cambria Steel Company employes of Johnstown will endeavor to further their knowledge of Business English under the guidance of Professor W. S. Dye, head of the English Department, and Mr. C. G. Gaum, Assistant Professor of the Engineering Extension Department, both of the Pennsylvania State College.

A series of fifteen lectures will be held on consecutive Wednesday evenings to the end of the semester. These lectures will follow in their natural sequence and will consist of "Specialization in Writing", "Business Letter Writing", and "Material for Publications".

The first lecture proved that such courses are much in demand. Professors C. O. Eldenour, W. F. Gibbons and M. M. Harris, of the English Department, are to assist in this work during the course of its activity.

### AG. CHEMS DO VALUABLE PURE FOOD ANALYZING

An important part in the pure food crusade conducted by the Division of Pure Foods of the State Department of Agriculture is being carried on by E. S. Erb, of the Department of Agricultural Chemistry. E. S. Erb conducts as high as two hundred analyses monthly of various foods and food products to detect adulterants and illegal constituents. All manner of suspected foods are sent here from the markets of the state to be tested and it is only by means of a constant vigil kept on foodstuffs and the assurance of speedy prosecution of the offenders that a high standard of edibles can be supplied to the hungry public.

A review of the activities of Mr. Erb in connection with the state food and drug commission for a brief period of time just past show that the most frequent infractions of the law have been made in the sale of the widely popular sweet chocolate covered cherries. Cherries which may have passed with credit the inquisition of discriminating palates have been detected as adulterated and injurious by the exacting chemical analysis of the pure food chemist. Seventy percent of the samples confiscated at points all over the state have been found to contain sulfur dioxide, an irritant of the digestional tract membranes. The impurity has been traced to poor cherries, spotted or otherwise blemished. In order to maintain a sale for their products with the candy manufacturers, unscrupulous canners have followed the practice of bleaching the fruit with sulfur dioxide, thereby affecting the purity of the product. Noodles, soft drinks, milk, canned goods, adulterated meats and eggs, most important food staples, are frequently adulterated.

### DEAN HOLBROOK CONTINUES TO IMPROVE FROM ILLNESS

Dean D. A. Holbrook, of the Mining School is expected to return to college on Saturday to resume his duties here. He has been recovering from a serious operation for appendicitis, performed at the hospital at Fitchburg, Massachusetts, but his condition was recently reported as being very satisfactory.

### Bezdek's Forty-One Problems



PENN STATE'S VARSITY FOOTBALL SQUAD FOR THE 1922 SEASON

### REGISTRAR'S OFFICE DEVISES NOVEL LETTER

Prof. A. H. Espenshade Formulates Booklet To Answer Letters of General Inquiry.

The registrar of Penn State took a day off a few weeks ago, and the faculty marveled. It seems that it's not a regular thing among college registrars to take a day off in the summer. Every day is his busy day in the summertime. With the rates for three thousand students to be recorded, the honors to be assigned, and the other clean-up work of the past year to be performed, in addition to the admission of an entering class of one thousand, it's not until late at night that the registrar takes off his eye shade, closes up his desk, and says "nothing to do until tomorrow."

But professor A. H. Espenshade, the registrar at Penn State, has found a way out. He has devised a single letter that answers about all the questions that a young prospective college student can think of asking, and not having the idea copyrighted, he is giving it away to other college registrars through

out the country. If the plan works out well it may be possible for registrars of the country to get away for a week's convention.

The letter consists of thirty-two parts each of which answers some question commonly asked by men and women seeking admission to State College. The questions occurring most frequently being answered first. The first page of the letter is devoted to a frank admission by the registrar that his job is not on speaking terms with the eight hour day, and at the bottom of the page he adds a line to tell what paragraph applies to the particular prospect in question. The result is that the would-be freshman gets not only the answer to his own inquiry but in the same letter gets also the answers to the different inquiries of 30 other men.

Professor Espenshade's letter begins as follows:

"In response to your recent letter, may I ask you to accept this printed memorandum, particularly the paragraphs indicated below, instead of a personal letter?"

"This method of reply has been adopted with a view to facilitating a prompt and complete answer to a very large number of various inquiries; but if it fails to furnish all the information needed in your case, do not hesitate to

write me again."

At the bottom of the first page is a reference to the particular paragraph to be noted by the applicant. Among the paragraphs designed to answer various inquiries are the following:

"6. I regret to say that because of overcrowded conditions we cannot consider your application for admission as a special student."

"12. Your entrance certificate has been received, but unless you have additional credits to offer by examination or by certificate of graduation from an approved high school, etc..."

"24. The Pennsylvania State College is not in a position to offer any special financial inducements to ex-service men."

"26. You have been accepted as a student in full standing for admission to the course mentioned on your entrance certificate. We are reserving a place for you."

"28. I am returning your vouchercertificate. After your matriculation

tion please show this certificate to the college officer appointed to make out your schedule of studies."

Many business institutions, corporations and other colleges have adopted the "omnibus" letter plan devised by Professor Espenshade.

was the wish of Dr. Frear that his scientific library be maintained as a special collection in the library, and in accepting the bequest, the College Trustees have directed that Dr. Frear's wishes be carried out. The collection will be of particular value to the students in Chemical Agriculture.

### SCIENTIFIC LIBRARY LEFT TO COLLEGE BY DR. FREAR

Through the will of Dr. William Frear late vice-director of the Agricultural Experiment station, the College has received a most valuable collection of scientific books and reports which will be given a permanent place in the Library of the School of Agriculture. It and \$10 pounds of butter.

MICHIGAN AG. COLLEGE HAS CHAMPION COW OF STATE Michigan Agricultural College possesses the champion cow of her class in the state of Michigan. She recently broke the record for one year. In one year she produced 21,000 pounds of milk and 100 pounds of butter.

Pennants Pillow Tops Table Throws The New Souvenir Book

The Athletic Store

On Co-op Corner.

### ALUMNI

Eat where clean, wholesome food is served

### CRYSTAL CAFE

Prompt Service Home Cooked Food Prices Reasonable.

### The No. 1 and 1 A Kodak Special For Better Pictures

Great Values at a Moderate Price.

The PENN STATE PHOTO SHOP 212 E. College Ave.

Saves Your Time—and gives you more spare time

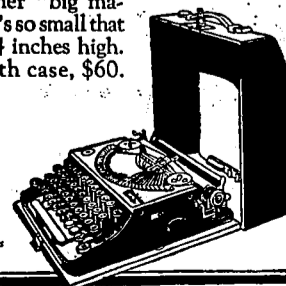


### Remington Portable

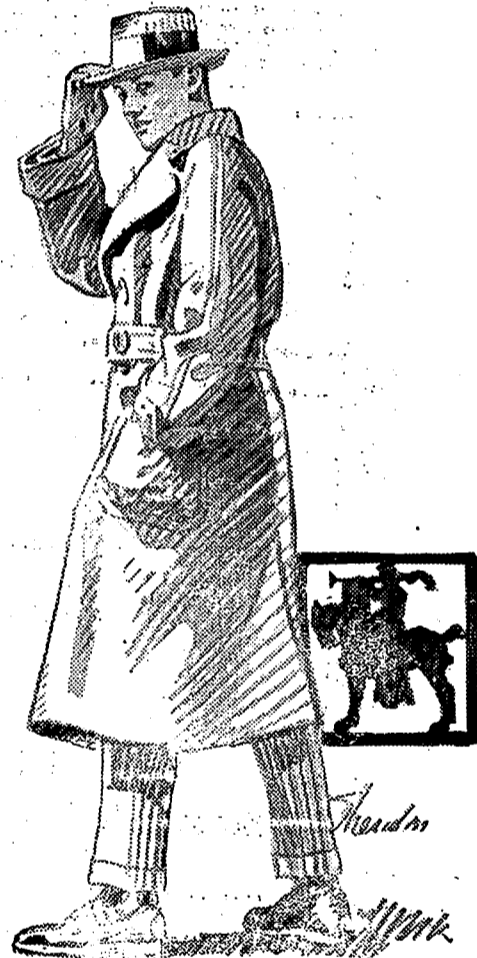
A revelation to every student who is tired of the pen. Will turn out your theses, themes and all your writing, neatly, legibly and quickly.

The most complete of all portable typewriters—because it has the Standard Keyboard and many other "big machine" features. Yet it's so small that it fits in a case only 4 inches high. Price, complete with case, \$60.

The Music Room 108 Allen St. State College, Pa. Remington Typewriter Co., Inc. 347 Pine St. Williamsport, Pa.



Paragon Ribbons for Remington Portable Typewriters 50c each—\$5 a dozen



Hart Schaffner & Marx Overcoats for style

THEY have the fine woollens and tailoring that make the style hold up and that give you long wear and money saving. We gathered a great selection for you to choose from; Raglans, Chesterfields, belted models, box coats.

The best values to be found anywhere.

MONTGOMERY & CO. State College Bellefonte

### The Laundry of Service and Accommodation

Collection and delivery every day

### Penn State Laundry

320 West Beaver Ave.

Phone 124

Announcing that:

John Ward Men's Shoes

will continue to visit PENN STATE

throughout the coming college year with the newest and best in conservatively correct footwear at prices ranging from \$7 to \$10. The first display of the season will be at:

STATE COLLEGE HOTEL OCTOBER 19 and 20

John Ward Men's Shoes

General Offices: 121 Duane Street New York City

New York Shops 145 W. Broadway just below Times Square and between Madison and Broadway

Philadelphia Shop 1111-13 Chestnut Street just below the Hotel Adelphi