

POTATO GROWERS ASSURE HOSPITAL FOR PENN STATE

Nearly Half of Amount Needed for \$150,000 Building Has Been Subscribed

CORNER STONE TO BE LAID ON AUGUST 23RD

A hospital for Penn State? That is the project which the Potato Growers' Association of Pennsylvania has undertaken, and to judge from the results of the past few weeks, it is going to be carried to a very successful conclusion.

Lawrence, Butler and McKean counties were the first to join the movement. The potato growers of Somerset and Cambria counties were also among the first to subscribe, each group pledging a sum of \$5,000 toward the \$150,000 needed for a hospital at Penn State. The \$5,000 potato given by the Somerset county men was planted recently on the campus on the site proposed for the building. This action was taken upon the request of President Thomas, who expressed the desire to have as long as possible a small bed of potatoes on the campus grown each year in front of the building.

Subscriptions have been coming from potato growers of other counties, and by the middle of last month, Centre, Berks and Lehigh had joined the movement, and a total of \$50,000, almost a third of the goal, had been pledged. Lehigh county, the second highest potato producing county in the United States, expects to raise more for the Penn State hospital than any other Pennsylvania county. Recent announcements have disclosed that growers in Lawrence, Jefferson, Elk and Chester counties have actively joined, and that Cumberland and Montgomery are preparing to subscribe generously to the movement that is sweeping the state.

Great Need for Hospital Penn State's hospital plight was clearly stated recently by President Thomas, when he said "Our present infirmary has only eight beds and we would be responsible for 3,200 men with hospital facilities for only eight. What might happen here in case of a serious outbreak of illness is not pleasant to contemplate."

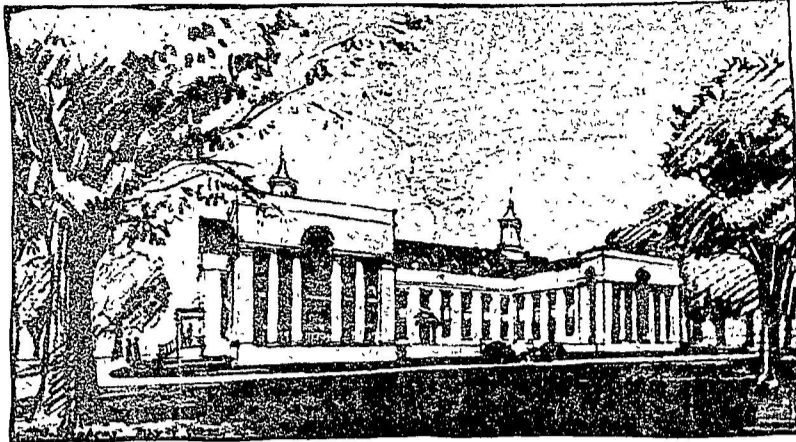
The new hospital is to be placed within a stone's throw of the main Agricultural Building, just above Old Beaver field. The building will be modern in every respect, with wards and private rooms for young men and women, a model operating room, and X-ray room, a clinic for nurses and doctors, a diet kitchen and every possible auxiliary to comfort. The first sketch of the proposed building has been drawn by a Philadelphia firm of architects, Day and Klauder.

The movement of the potato growers of the state has gone so far that the date of Wednesday, August 23rd, has been set for the laying of the cornerstone of the hospital. At that time delegations of potato growers will come from every section of the state to attend the ceremony. One of the attractions then will be the bed enclosing the \$5,000 potato gift of Somerset county. This potato, of the Sir Walter Raleigh variety, has been planted as stated above, on the site proposed for the building, in a bed which will be surrounded with rare flowers.

Largest Single Contribution It was announced last week that the largest single contribution to the hospital project was \$1,000, the gift of the Rev. Mr. Charles G. Jordan, of Volant, Jefferson county's representative in the State Legislature. An equal amount has been raised by other potato men in that county. One township in Elk county has subscribed \$500.

In Chester county, the Webb brothers, who live near West Chester, gave the movement their approval with a \$500 subscription. Interest there is very great and arrangements are being made for a great field meeting on August 3rd to be attended by all potato men of that county. Montgomery county will probably take part in the Chester Field Day.

Half of Amount Raised With additional counties of the state joining in the movement every day, this potato growers' fund is growing rapidly. It was announced at campaign headquarters yesterday that almost half of the funds necessary for the construction of the \$150,000 building which



First Sketch of the Proposed Penn State Hospital

forms part of the \$2,000,000 campaign, has already been raised. The idea of building the hospital first occurred to a group of men in the great Pennsylvania potato industry in late April, when they heard for the first time of the great needs of the college. It will never be known how or why the sentiment of the potato industry men centered around Penn State's inadequate hospital facilities. It just began. Then it grew. It seemed a natural thing, which attained considerable proportions in its earliest stages. Now it is nearing full development, and the desire to help Penn State by doing this work is strengthening each day as new men are acquainted with the project and as the others realize the significance of it.

SUMMER SESSION HAS MANY SPECIAL COURSES

Some of the special features of the summer session at the Pennsylvania State College this summer are: a course in athletic coaching, under the supervision of Hugo Bezdek, Penn State's coach of football and baseball, courses in Training for Citizenship, the French House and Spanish House, at which only the French and Spanish languages, respectively, will be spoken, a clinic for Speech Correction and Expression, given by Miss Sara M. Stinchfield, a specialist from the Department of Speech in the University of Wisconsin, a summer course for Army Nurses, an Americanization Institute, method and content courses in geography, a course in radio, a course in motion picture photography, and a course in coal mining.

MAP SHOWS PENN STATE IN THE FOREIGN FIELD

The large map in the main corridor of Old Main Building shows the location of each Penn State alumnus who is serving in the foreign mission field. The map is four feet by eight feet, and the names are marked with electric lights. It was made by the Student Volunteer band, an organization of students who plan to spend their lives in foreign missionary work.

WIRELESS PHONE MESSAGES HEARD AT LOCAL STATION

Concerts, Lectures, and Solos are Received by Wireless Operator at Penn State

COLLEGE IS MEMBER OF AMERICAN RADIO LEAGUE

Those who are taking the course in radio instruction offered by the college this summer and those who are naturally interested in the subject will find the wireless station, located just back of the engineering group of buildings, a place of never-ending interest. Wireless telephone messages are being received virtually all the time and are usually received in the evenings, from seven to ten o'clock, the sending stations being at such places as Schenectady, Pittsburgh, Newark, Detroit. Sometimes Chicago is heard on the wireless phone, but this happens only at rare intervals.

For wireless telegraph messages, however, the receiving range of the college apparatus is practically unlimited, as it is possible to receive messages from all over the United States and from stations in France, Germany, Italy, and other foreign countries. The sending range is limited to stations as far distant as New Orleans, St. Louis, and Palm Beach, Florida, on clear nights, while stations within a five hundred mile radius can be reached at all times.

Altogether the apparatus at the college station is somewhat limited, new devices are being obtained gradually and there is every indication that it will be increased to a considerable extent in the next few years. The station equipment consists of a regenerative receiver, detector and two stage amplifier, a 2 K W transformer, glass

condenser in oil, rotary gap and counter pole, while the antenna consists of four wires, eighty feet long, and is eighty feet in height on an average. The Penn State station is a member of the American Radio Relay League and is a unit of Trunk line B, which extends from Boston to California, and carries on relay work. On an average between two hundred and three hundred messages per month, both in and out, are handled entirely free of charge, under the direction of the Department of Electrical Engineering. In addition to its active work in sending and transmitting messages, the station serves as a sort of radio extension school, giving information and answering questions received from all parts of the country relative to radio activity and development.

PENN STATE GRADUATES SAIL FOR MISSION FIELDS SOON

Two graduates of Penn State will sail this summer for work in foreign mission fields. These are, Mr. Joseph T. Lester '21 and Mrs. Joseph M. Lester '22, who go to the American University at Cairo, Egypt, Mr. J. P. McKnight '21 and Mrs. J. P. McKnight '21, who sail in August for the Egyptian Sudan, and Mr. Alfred W. Baerens '22, who goes to Beirut, Syria, to teach chemistry. Two others accepted appointments, but unsettled conditions abroad make their leaving improbable. Mr. and Mrs. McKnight were married on the fourteenth of last month.

The State College Hotel
Special Dinners
Excellent Accommodations
S. Allen St.
C. E. PROBST, Prop.

STORES CLOSE EARLY
The summer session students are requested to be in mind that all the stores of the town close at six o'clock each evening, except Wednesday and Saturday evenings. They are also closed Thursday afternoons. The two book stores, however, will open each evening for the first two weeks of the session.

HOMES FOR SALE
Located on Nittany Avenue
To be ready for occupation by **SEPTEMBER**
See **E. E. ELLENBERGER**
Warriors Mark, Pa.

Surprise Them!
with some of our **FRESH FRUITS VEGETABLES and GROCERIES**
HOY & NEIDIG
107 S. Allen St. Phone 23-J

HURWITZ CLOTHING STORE
Furnishings for hot weather
SHOES
For Men and Women
WATCH OUR WINDOWS
127 S. Allen Street

The Sandwich Shop
The teacher who expects to go thru the next year successfully knows that it pays to be served with Quality Food in a cool place during the summer months. We serve luncheon and supper. Tickets 10 per cent off.
Open 10.30 a. m. to 11 p. m. Sunday 5 p. m. Also After Dances.

JUST RECEIVED
A Beautiful Assortment of **Philippine Hand Made Gowns and Chemises**
THE VOGUE SHOP 138 E. College Ave.

SWIMMING
Men and Women Students of the Penn State Summer Session are being WELCOMED to the Mammoth Concrete Swimming Pool, 323 feet by 30 feet, on Hughes Athletic Field, BELLEFONTE, along the Main Highway to Lock Haven.
HOURS 9-12 a. m. 1-5 p. m. 7-10 p. m.
Bath Houses Diving Boards Diving Platforms
Parties from FRATERNITY HOUSES and CLUBS accommodated with exclusive privileges. Admission 25c.
CALL BELL PHONE 45--J. R. Hughes.

EAT
and be satisfied
AT
225 West Beaver Ave.
Excellent Board for Ladies and Gentlemen

Snug
Trim Fitting Shoes, shaped exactly to the lines of the foot so that they are as comfortable as can be.
Fine White Oxfords and Canvas Shoes for Summer Wear.
STATE UNIVERSITY SHOE CO.
S. Pugh St. Gentzel Building

GILLILAND'S DRUG STORE
TOILET ARTICLES
PENN STATE SOUVENIRS
STATIONERY
Quench Your Thirst at Our Fountain
W. College Avenue Next to Co-op

Everything For the Man
Summer Knickers
Golf Hose
Sport Suits
White Flannel
and Whipcord Trousers
Attractive Prices
Cleaning, Pressing and Repairing
THE FASHION SHOP

CARS TO HIRE
For All Occasions
PERCIVAL RUDY
121 S. Atherton
Bell Phone 176

Dry Goods Shoes Groceries
Wholesale and Retail
FYES'
W. College Avenue

ONE HUNDRED MORE GOOD EATERS WANTED
AT THE **TRACK HOUSE**
\$6.50 per week--Breakfast, Lunch and Dinner
\$5.50 " " Luncheon and Dinner
Rooms \$2.00 per week