

Our Candy Department is better than ever. Come in and see our big assortment.

GRAHAM & SONS
On the Corner.

PENN STATE GIRLS ATTEND CONFERENCE

Fourteen Penn State girls representing the college, Y W C A at the annual Young Women's Christian Association Conference held at Eaglesmead, Pa. from June twenty-first to July first. The conference was a general get-together of certain college associations and the program included fund-raising discussions of student problems and world problems as well as organization meetings, daily study classes and athletic events.

Miss Agnes Newman, 22, delegate from the athletic association, Miss Grace Youm, 22, President of the Y W C A, Miss Harriet Calvert, 22, Misses Florence McAfee, Agnes Taylor, and Isabel Allen, delegates from the class of 1921, Miss Ruth Hingsworth and Misses Myra Fox, 21 and Alleen Lell, 23, delegates from the Y W C A.

PRESIDENT ADDRESSES NEW WOMEN STUDENTS

The Freshman girls held a short meeting in the foyer of the Auditorium on Wednesday afternoon and were addressed by President Thomas who gave them some very good advice. Miss Margaret A. Knight, Dean of Women, announced at the meeting that she would meet with the Freshman girls every Tuesday evening at seven o'clock for the next six weeks and would at that time give a series of short talks.

PRGT. BENITA AT CATTLE SHOW
Miss F. J. Bently is in Syracuse, N. Y. where Penn State is showing her cattle at the N. Y. State Fair.

MANY STARS RETURN FOR TRACK SEASON

(Continued from first page)
to benefit considerably by the addition of Buck, Wilhelm, Hamilton, Wendler, Parsons and Schultz, all from the Class of 1921.
Some of the best cross country men in the present Freshman class are Vincent, McClure and Klesieff. Vincent comes from Johnstown and is a good two-miler. McClure was captain of Kiski track team last year and Klesieff left Hills from Gettysburg High. Other good Freshman track material has been found in Dal, who comes from East Greenville and who runs the one hundred and two-hundred yard dashes in exceptionally fast time for an inexperienced youngster. Weind, who comes from Lansdale is very good in the two-hundred and the quarter and Krey, who comes from the same place is also good in the quarter. Both of these led in on the winning Lansdale team at the Penn Relays last spring. Proudfoot who comes from Kiski is another good quarter miler. Last year he ran an inching man on the Kiski relay team. A very good high jumper has been found in Middle-

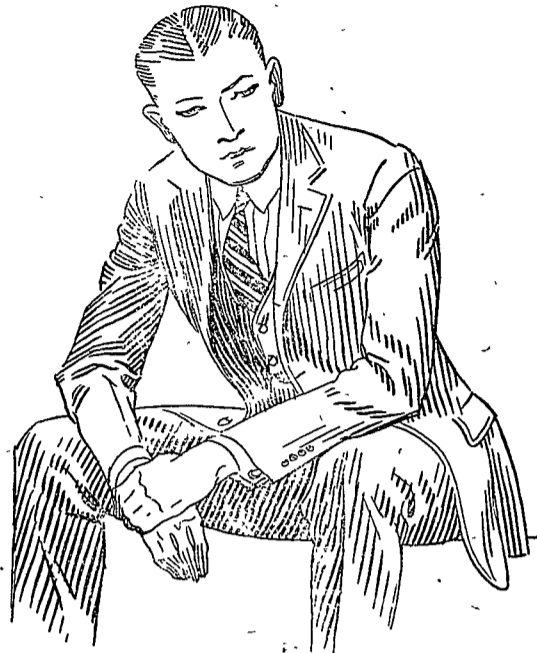
ton who did some work at Delaware State last year.
New Champions
Loudie Helffrich and Shields accomplished some work this summer. Helffrich and Romig, both won championships. The meets in which these men took part this summer were big national attractions and the Penn State men had to compete with some of the best collegiate and athletic club stars in the United States.
In the National Intercollegiate Championship Meet at Chicago on June of last year, "Blondie" Romig, 21, last year's intercollegiate Cross Country Champion, won the Two-mile Championship finishing the race in four minutes and thirty-one seconds.
On the following day, Helffrich, running in New York City won the half mile in the Metropolitan Championship Meet in one minute and fifty-seven seconds. The very next week he repeated his performance at Portland Oregon finishing the race in the same time as in New York. In the National Championship meet at Pasadena, California Helffrich won the half mile championship in one minute and fifty-four seconds, better within one and three-fifths seconds of the world's record.

The Co-Eds will find the little shop located in the Nittany Inn Block to contain the unusual in style and quality at moderate prices.

VENIDIA double mesh NETS are now 2 for 25c.

ANITA IMBODEN
Courtesy Service Quality

TUROLE



TAILORED AT FASHION PARK

The Turole style treatment developed by our tailors at Fashion Park gives the pliancy desired by the type of man who can wear a soft coat with distinction. Custom service without the annoyance of a try-on. Ready to put on. Tailored at Fashion Park.

THE FASHION SHOP

The Nittany Theatre Co.
Photoplays of Quality
State College, Pa.

FRIDAY Double Feature Bill NORMA TALMADGE In "The Sign on the Door" and HAROLD LLOYD In "I Do" Special Prices This Production— Adults 30c, Children 15c and Tax	SATURDAY CONWAY TILBIE In "The Lighters" NEWS WEEKLY
FRIDAY AND SATURDAY ALL STAR CAST In "The Woman God Changed" VANITY COMEDY	MONDAY GLORIA SWANSON In "The Great Moment" The Best Picture in Recent Months
	TUESDAY THOMAS MEIGHAN In "The Conquest of Canaan" MELOD COMEDY "The Green Horn"
	COMING ALL-STAR CAST In "The Lost Romance"

L. K. METZGER

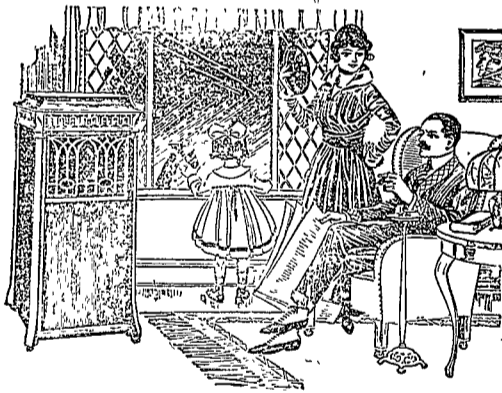
Because of **SERVICE** We are

L. K. METZGER

"We are the Fastest Growing Store in State College"

Plans are already under way for the erection of an addition to the rear of our store which will double our present floor space. Our business is growing so rapidly that we must have more room. Eventually we will erect a large L shaped building with an entrance on College Avenue and one on Allen Street.

We are preparing for a college enrollment of 10,000.



On Thursday, September 28, in Old Chapel, we will give a Tone Test to prove to you that you cannot distinguish between the human voice or an instrument and the recreation by the Edison Phonograph.

Admission by ticket only.

Sporting Goods
Golf Football Track
Baseball Tennis Hunting

T. P. Loose Leaf Books. All sizes---for all purposes.

College Seal Stationery
Pennants, Banners
Pillow Tops

Edison Mazda Lamps
Fuse Plugs

Bring your "sick" Fountain Pen to our "Pen Hospital." Our "Pen Surgeon" is a wizard. Get pen following day. All makes of Fountain Pens repaired.

Tennis Rackets restrung here at our store, \$2.75 to \$5.50. WORK GUARANTEED.

Our Cigar Department is 500 per cent better than last year. You can now enter from street level. No steps.

Schraft's Blue Banner Chocolates. Candy always fresh. 60c per pound.

L. K. METZGER
111-115 Allen Street.

Join our Library---25c to Join
Typewriters for Rent and Sale
L. C. Smith Underwoods
Remingtons Royals Monarchs