

GRAHAM & SONS On THE CORNER

Wish to announce that with their own help now they expect to give you the service which they have been trying to give you at all times...

BETHLEHEM PREP EASILY DEFEATED

Freshman Basketball Five Wins First Game By 29-19 Score

In their first basketball game of the season, the Freshmen five came out victorious over Bethlehem Prep with the long end of a 29 to 19 score to their credit...

Blue and White Wrestlers

(Continued from first page)

no mean opponent having experience and strength in abundance yet Mills, who apparently taking big chances, caught and pinned his man neatly and effectively.

Captain Long ended his evening's work in two minutes and 31 seconds by spreading Gross of Pitt upon the mat with a reverse chancery and bar lock.

Nolan Wins Decision. Kendrick who fought Nolan and held him to a decision, seemed to prefer a scuffling battle and for 7 minutes the grapplers remained upright, although this was not Nolan's wish...

Captain Walton's Men Win

(Continued from first page)

three goals from the floor and two from the fifteen foot line. The visitors then seemed to take a brace and Swartz, Soltzer and Keating increased their scores by nine Laubach and Blakeslee then got together and assisted each other in adding ten points to their credit.

Table with columns: Player, F, G, Ft. G., A., Pts. Rows include Blakeslee, F., Wagner, F., Adam, C., Walton, G., Wilson, G., Laubach, F., Faust, G., Total.

Referee, Brenner, F. & M. Time of State, 9. on Lebanon Valley, 12. Fouls—Blakeslee 8 out of 12, Soltzer, 4 out of 9. Substitutions—For State, Laubach for Wagner, Faust for Wilson, for Lab. Val. Shetter for Loomis.

PRESIDENT SPARKS RECEIVES LETTERS FROM LEGISLATORS

The following is a copy of a letter received by President Sparks relating to the appropriation booster campaign, and is representative of the tone of many letters already received by him and a number of the students:

(Signed) JOHN McKAY 6th Legislative District, Luzerne County

TO: PRESIDENT SPARKS. Many cases of tonsillitis have developed during the recent cold spell and the Health Service has been kept busy attending to them.

"BUD" WHITNEY TO GIVE UP FOOTBALL

Lawrence A. Whitney, backfield coach of the Penn State eleven for the past two years, has definitely decided to give up football and has announced his retirement from the game.

tant to "Dick" Harlow, Penn State's resident coach.

A number of prospects are being considered but no definite selection has yet been made.

Mowry's Cafe

Open Day and Night Every thing fresh and good. Come and try it. F. J. Mowry

Fifty cadets of the United States Military Academy at West Point were dismissed recently for their failure to pass the annual mid-year examinations.

Get your SHOE REPAIRING done by J. B. MINGILL, Expert 116 Frazer St.

VENUS 10c PENCIL

No matter what course you're taking you need this famous pencil! Because of the superlative quality of material and workmanship, VENUS is admittedly the finest pencil it is possible to make.

For very thin, narrow lines, for extremely accurate graphical charts, maps, details, etc., 711-8H-9H are available. Look for the distinctive swastika mark finish on each of the 17 black degrees and hard and medium copying.

BALFOUR BLUE BOOK 1917

The standard reference for Fraternity Jewelry, together with individual Badge price lists, will be mailed on application. L. G. BALFOUR & CO. ATTLEBORO, MASS.

MAIL YOUR LAUNDRY HOME

THE PARCEL POST LAUNDRY CASE carries three weeks laundry 200 miles for 14c. Saves its cost in one month. Cover of white canvas and leather with brass stamp plate and reversible address plate for your address on one side and home address on the other.

The Parcel Post Bag Co., 3000 Clifton Ave., Baltimore, Md.

DID IT EVER OCCUR TO YOU

that the VICTROLA in your Fraternity was too small for the house? DO YOU KNOW WHAT TO DO Go down today and talk it over with the man in THE MUSIC ROOM

BEST QUALITY Groceries

Wholesale and Retail Special Rates to Clubs and Fraternities L. D. Fye 200-202 W. College Ave.

State-Centre Electric Co.

EVERYTHING ELECTRICAL State-Centre Electric Co. Store Closes at 6 P. M.

MINING LECTURE

Mr. Edwin M. Chance, consulting engineer for several large anthracite companies, of Wilkesbarre, Pa., will deliver a lecture tonight in the Old Mining Building at 7:30, on the subject "Mine Atmosphere"

This week only I'm here to buy second-hand clothing, coats and shoes.

I will pay a good price for everything. Just drop a postcard and I will attend to it.

I. Jaffe

State College, Pa. Gen'l Delivery

FRESH STRAWBERRY SUNDAES

at the REXALL Drug Store

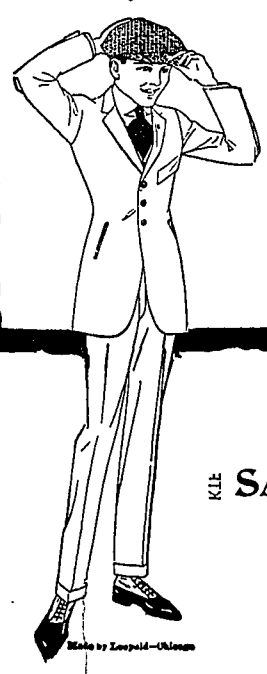
FATIMA A SENSIBLE CIGARETTE

Why they're Sensible Occasionally, a more heavy, full-powered cigarette than Fatima tastes mighty good. But heavy cigarettes are a little too "oily" and rich to suit most men for long.

The Nittany Theatre Co. Photoplays of Quality State College, Pa.

Table with columns: Day, Play Title, Actor/Actress. Rows include WEDNESDAY JACK PICKFORD IN "SEVENTEEN", THURSDAY ETHEL CLAYTON IN "THE PRINCE OF GHAUSTARK", FRIDAY FRANK KEENAN IN "THE SINS YOU DO", SATURDAY BLANCHE SWEET IN "UNPROTECTED", SATURDAY BERTHA ITALICH IN "LOVE AND HATE", PASTIME THEATRE FRIDAY THEDA BARA IN "HER DOUBLE LIFE", COMING THEDA BARA IN "THE DARLING OF PARIS"

One Boy of the High School Age Will This Spring Get a Suit of LANGHAM-HIGH CLOTHES. IN order to introduce these clothes to the younger young men in this town—the fellows between 15 and 20—we are going to give a suit to that boy of the High School age who submits to us the best essay of one hundred words or less on the following subject: "How Much Does Good Taste in Dress Influence Success?"



Bring All Essays to Essay Department in Person On or Before March 15

SAUERS & HEBERLING

