

The Medico-Chirurgical College

Department of Medicine
 Located in America's Medical Center. A School which offers Peculiar Advantages for Completing a Course under the Standards of the American Medical Association.
 Completion of standard four-year high school course, or its equivalent, plus one year of work of college grade in Physics, Chemistry, Biology, and one modern language, required for entrance. All credentials must be approved by Pennsylvania State Examiners under special authority of State Board of Education.
 A Pre-Medical Course in Physics, Chemistry, Biology and German is given, complying with the Pennsylvania State and American Medical Association requirements.
 The Course in Medicine comprises four 15-week sessions of eight months each. Among the special features are Individual Laboratory and Practical Work in well equipped Laboratories, Hospital and Dispensary, Free Clinics, Work Class combined in size, System of the Clinical Conference, Qualified and Modern Seminar Lectures. Abundant clinical material is supplied by the College Hospital, Philadelphia General Hospital (1500 beds) and the Municipal Hospital for Contagious Diseases.
 Also Department of Dentistry and a Department of Pharmacy and Chemistry. For announcements and information, Address: PENNSYLVANIA COLLEGE, 31, D., Dean, 17th and Cherry Streets, Philadelphia, Pa.

FRESHMEN WIN FLAG SCRAP

1918 Easy Victors in Last Scrap of Year

The freshman class won the right to have an official flag by handily defeating the sophomores in the flag scrap. The freshmen met in the armory at 6 o'clock and the sophomores assembled on Old Beaver where the classes lined up against each other at 6:30. The sophomores were in the north end of the field when the freshmen carrying their pole entered the south end. At the starting gun the pole was quickly raised and the freshmen locked arms around it; while the sophomores charged the circle of men thus formed. At the end of 20 minutes of furious fighting the freshmen emerged victorious for not a sophomore had been able to lay a hand on the pole. The freshmen always had a man at the top of the pole for emergency and the freshmen president stood at the bottom. After the closing gun the freshmen gave the old college yell, their own class yell, and then to show their true sportsmanship they gave the sophomore class yell.

Maize and light blue were the official 1918 colors. Ever if the sophomores had succeeded in scaling the pole it is very doubtful if they could have removed the flag because it took the freshmen 25 minutes, after the scrap, to accomplish this task with a hammer and chisel.

Prohibition League Meeting

On Monday night, May 10, at 7:30 the Prohibition league will hold its last regular meeting of the year. Next year's officers will be elected and the work planned. Much important business is to be acted upon. The I. P. A. banquet will be held on Friday night, May 14. Every member is urged to be on his mark for both of these events.

Scabbard & Blade Elections

Carlos Guy Gonder
 Norman Earl Hartman
 Horace Jackson Hartranft
 Robert Peters Meily

Household furniture for sale on the third floor of the Pastime building. Can be seen at any time.

BABE'S Pastime Theatre

WEDNESDAY
The Outlaw's Revenge
 Thrilling Four Part Mutual Masterpicture

THURSDAY
A Man and His Mate
 Mutual Masterpicture Sur-reme Keystone Comedy

FRIDAY
Vaudeville
 Two Acts, and

The Little Girl That He Forgot
 Alliance Feature in Four Acts

SATURDAY
Exploits of Elaine
 No. 10
 and Other Big Features With Vaudeville

New Cheering System

A new cheer leading system for the Pennsylvania State College proposed by the committee appointed by the president of the Athletic Association.

1. There will be one cheer leader and two assistants.
 2. It shall be the duty of one of these assistants to act as the college song leader.
 3. All other assistant cheer leaders shall be juniors. The number will be governed by the head cheer leader.
 4. The three cheer leaders shall be chosen by the graduate manager, the managers of the three major sports and the present cheer leader; and in following years by the three cheer leaders, the graduate manager and the managers of the three major sports.
 5. The elections are to take place in the first two weeks in May.
 6. Each senior cheer leader shall be given by the Athletic Association at the opening of the first semester a white V neck sweater timed in blue.
 7. The standard cheer leader's uniform will be white flannels and this white V-neck sweater.
 8. A prize of five dollars will be awarded for the best college song of the year.
 9. The Old College Yell and the Alma Mater are to always remain as the official yell and song of the college.
- Hill, Lamb and Hewitt, committee.

Sophomores Keep First Place

The sophomores made it two straight on Saturday when they defeated the juniors by the score 12 to 7 and took first place in the class league.

The juniors made a good start getting 5 runs off Dufford in the first inning on 4 hits and 2 errors. Davis who relieved Dufford for the sophomores pitched a good game and the juniors were unable to hit except in the fourth inning when Sullivan scored Wetherald and Mackin on a hit to left.

Baughman, who pitched for the juniors, was touched up freely by the sophomores. The league leaders had 15 hits and put the game in safety in the eighth inning when they scored five runs.

The hitting of Greenland and Long were the features of the game. The score:

	R	H	E
Sophomores	000320250	12	15
Juniors	500200000	7	9

FOREST L. STRUBLE

Plumbing and Heating
 Both Phones

ROUNTREE'S

The Palace Restaurant

Corner West College and Frazier

REAL EATS.

Efficient catering for special feeds

ALBERT THOMPSON

Automobile Livery and Taxi Service
 Bellefonte, Pa

Caterers, Attention!

State College Bakery

for Bread, Pastry and Ice Cream!
 Both Phones

A. DEAL

SANITARY PLUMBING, STEAM, HOT WATER, VAPOR AND VACUUM HEATING

State College Pennsylvania



We realize that the individual sanitary paper cups and ice cream dishes cost us more than the old style methods. Simply another example of the fact that we spare neither time or expense to give our patrons the very best. Read in our confectionery window what the leading confectioners' magazine has to say.

GRAHAM, on the Corner.

Keep Kool

Come in to our up-to-date, sanitary fountain and enjoy its wealth of delicious and invigorating iced drinks, sundaes, etc.

QUALITY and SERVICE are our watchwords

Gilliland Drug Store

Nittany Inn Block
 College Ave

We will Accommodate Your Guests

The Nittany Inn

State College

JAMES P. HIKERS
 Proprietor

DR. H. E. THORNLEY

Osteopathic Physician

Bellefonte State College
 Mon., Wed., Fri. Tues., Thurs., Sat.

Summer Apparel All Ready

Straw Hats

The most complete and varied showing, excelling in diversity of styles and weaves as well as the utmost value at each price. The new low crowns and wide brims in rough weaves, and the Leghorn hats are here, \$2 and \$3.

Flannel Pants

Of plain and striped fabrics. Serge in new heavy stripes, also the more conservative pin stripes \$5, \$6, \$6.50.

Shirts

Sport shirts with large collars, in white, tan, stripe, half sleeves, \$1.50. Soft cuff shirts, \$1.00, \$1.50, \$2. Silk shirts, \$3.50, \$4, \$5, and \$6.

Neckwear

In 4-in bands and bows. New showing each week until commencement 50c.

Underwear

B. V. D. balbrigan, lisle, porous knit, crepe, union and two piece suits, \$1 to \$2 the suit.

Palm Beach, Mohair and Silk Suits

In natural and striped patterns, \$7.50, \$10 upwards

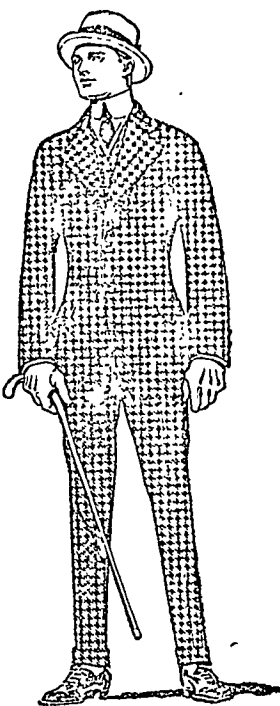
Blue serge suits and suits of light colored mixtures, plaids, \$15, 18, 20 upwards.

Hosiery

In plain, colors, lisle, Holeproof, 25c pair, \$1.50 the box, guaranteed 6 months. Silks, with fancy clocks on side, 50c. Holeproof silk 75c, 3 pairs, \$2.00, guaranteed 3 months.

Tyrolleon coats, all shades \$10.

Everything man wears but shoes here ready for you.



Copyright Thurtell, Schuller & Marx

George Randolph Chester

Famous Author, says:

"Why shouldn't a man be willing to recommend a tobacco which gives as cool, sweet and satisfying a smoke as Tuxedo?"

For Randolph Chester

For Mentally Alert Men—Tuxedo

George Randolph Chester's "Get-Rich-Quick Wallingford" stories have delighted thousands through the mental alertness, good humor and keen mind shown by the wily promoter.

When George Randolph Chester writes of things typically American he knows what he is talking about; and when he endorses Tuxedo—the typically American tobacco—his endorsement carries great weight with the keen-minded, alert and brainy smokers of this country.

Tuxedo

The Perfect Tobacco for Pipe and Cigarette

is made especially to maintain the American spirit of good humor. Its constant use benefits a man in mind and body, by keeping him happy and physically fit.

Tuxedo is the finest Kentucky Burley—the world's premier smoking-tobacco leaf—made absolutely non-biting by the original "Tuxedo Process" that has never been successfully imitated. Tuxedo is delightfully mild, fragrant, rich, and gives a cool and satisfying smoke. Tuxedo is in a class by itself.

YOU CAN BUY TUXEDO EVERYWHERE

Convenient, glassine-wrapped, moisture-proof pouch 5c Famous green tin, with gold lettering, curved to fit pocket 10c
 In Tin Humidors, 40c and 80c In Glass Humidors, 50c and 90c

THE AMERICAN TOBACCO COMPANY

House Party

When arranging for this function drop in and consult us about

Ice Cream, Sherbet, Punch, Cakes, etc.

HARVEY BROTHERS

220 East College Avenue

