

**THE FARMERS' FAIR.**  
How It Will Appear to the Visitor.

On No. 13-14, Old Beaver Field will present to the visitor a number of interesting educational and amusing features.

After passing through the gates of welcome, the first object which receives the visitor's inspection will be tent "A" which will contain the Agronomy exhibit of high educational value, the corn show, grange exhibits and other interesting features. Next in line on the right side of the field is tent "B" in which will be found demonstrations of modern housekeeping in all its phases, a model garden, demonstrations of the numerous branches of forestry, and also samples of the learning of all ages, exhibited by the School of Liberal Arts.

As our visitor emerges from this tent he will be confronted by tent "C" in which will be placed in a most attractive manner all the articles a normal appetite could desire including numerous confections, ice cream, sandwiches and coffee.

Having satisfied the inner man, he will next inspect tent "D" wherein will be found representatives of the highest type of livestock of all classes, and in tent "E", the next in order, will be housed the horse show which will be the center of attraction for all lovers of horses. Passing still further down the "Pike" he will next be attracted by the highly educational exhibit staged by the Dairy Husbandry Department illustrating the methods and equipment used in modern dairying, together with typical representatives of the leading breeds of dairy cattle.

Having satisfied his desire for the educational and after further appeasing his appetite at the Dairy Refreshment Stand, he will be in

an excellent mood to be entertained. At this critical moment there will come to his ears the music of the vaudeville show in tent "F" and he proceeds thence to enjoy a good twenty-minute laugh.

Our visitor then crosses to the other side of the field and watches with amazement the latest development in "New Fangled Fanning." Furthermore, while passing "Maud the Kicking Mule," and being thoroughly instilled with the spirit of the day, he will test his "throwing arm" and having varied success will in turn attempt to destroy the "Babies" and "Monkeys" and will no doubt leave with a pocket full of cigars.

The next attraction is a series of fifteen-minute vaudeville acts complete and amusing in itself, and having viewed as many of these as he desires, he will "take in" the rest of the amusements and after winning a pound box of chocolates at the "Wheel of Fortune," listening to a few selections by the Farmers' Band, and purchasing his chrysanthemum, he will pass on to the Horticulture Building and inspect the exhibits of that department, including fruit, flower and vegetable shows. The tour completed, our visitor, now a broader and happier man, starts out to see what else the college has in store for him.

**DEPARTMENTAL NOTES.**

H. W. Selby Sec'y. of the Philadelphia Growers Assn. will speak before the senior and junior classes on Nov. 17. Mr. Selby is a graduate of Lafayette and since leaving college has had a wide experience in both the selling and buying of farm products.

Dr. M. E. CONARD of West Chester, a former trustee of the college, now farm advisor for the Agriculture of the state, was here a few days studying the new barn and pavilion. Dr. Conard is an ex-

pert in barn construction.

Prof. Severson of the Animal Husbandry Dept. is attending a convention of the Society of Animal Production in Washington, D. C., today and tomorrow.

The freshmen taking woodwork- ing are constructing a model rural school house, one-twelfth actual size. This will be exhibited at the State Educational Convention at Harrisburg, December 28-30 and here at the college during Farmers' Week.

Manufacturers of electrical appliances have been requested to exhibit their products in the new Engineering Unit on Pennsylvania Day. All responses to these requests, to date, have been favorable. Moving pictures will be shown illustrating the work in the furnaces and mills of the National Tube Company; the manufacture of electrical machinery in the plant of the General Electric Company; and the application of modern safety devices to various kinds of manufacturing work. The first two sets of pictures will be sent by the companies named and the last set by the Department of Labor and Industry at Harrisburg. No admission will be charged for any part of the exhibit.

C. E. Butz, 1910 E. E., is engaged in the organization of the new business department of the Alabama Power Company with headquarters at Birmingham, Alabama. This company is constructing a network of transmission lines which will eventually cover the entire state. Prior to going to Alabama Mr. Butz was connected with the commercial department of the Virginian Power Company at Charlestown, W. Va. Four other 1910 State men are in Alabama; Larry Forbeis, farming; E. B. (Pop) Sutton, mine reserve work; F. S. Gillespie, engineer on construction work; H. R. ("Oliver") Cromwell, with the Tenn. Coal

**HAVE YOU SEEN**  
the new  
**Penn State Song Book?**

Get One For Her at  
**"The Music Store"**  
108 Allen Street Next to Postoffice

**Blue Goose Cafe**

For Ladies and Gentlemen  
Special Menu For Pennsylvania Day

Open Day and Night

JUST THE PLACE TO GET THAT

**LATE LUNCH**

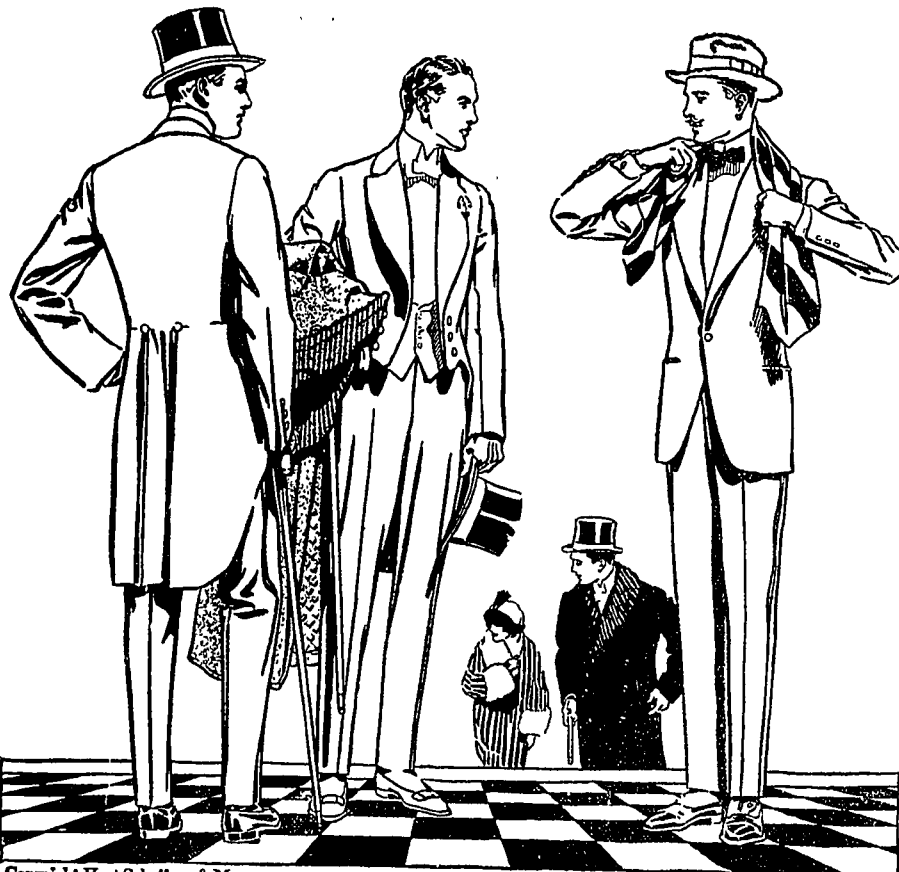
Patronize Our Soda Fountain

**BLUE GOOSE CAFE**

East College Avenue

**EVENING CLOTHES**

here==ready for you



Copyright Hart Schaffner & Marx

A fine collection of all the wanted things for Formal Evening Wear. Liberal showing of everything that is proper and correct for the season's wearing. Novelties that are new and different; conservative styles that are in good form, but not so extreme, the showing embraces all the wanted dress articles.

- Evening Suits ready to wear \$25, 35, 40 to \$50
- Tuxedo Suits ready to wear \$25 to \$40
- Overcoats \$15 to \$50
- Waistcoats \$3, 3.50, 4, 5, to \$7.50

- Silks Hats, Opera Hats, \$7.50 and \$8.50
- Knitted and Silk Mufflers \$2, 3.50, \$5.00 and higher
- Soft Tucked Shirts \$2 to \$6. Stiff Shirts \$1.50 to \$2.50
- Leather Gloves \$1.50 and \$2.00. [Silk Gloves \$1.00 and \$1.50
- Neckwear, Silk Hosiery, Stud Sets, Watch Guards
- All ready, and glad to serve you

Dress suits on hand at all times for renting


**Sim, The Clothier**  
 Correct Dress  
 BELLEFONTE AND STATE COLLEGE - PA.