

Agricultural Notes.

Professor L. A. Clinton and L. H. Goddard of the United States Department of Agriculture, and A. B. Ross, County Agent in Bedford County, with representatives of the School of Agriculture and Experiment Station held a conference at the College last Friday to consider questions relating to co-operative county extension work.

Eighty students have already been admitted to the Winter Courses in Agriculture which begin December 2.

Farmers' Week programs will be mailed in a few days. Extra copies will be sent to persons who desire to distribute them.

The following item appeared in a recent issue of the Pittsburg Post:

Stuart B. Rote of the Edward A. Woods agency of the Equitable, a graduate of State College, ranked second for a number of lives insured for the first eight months of 1913. He qualified in 1912 and 1913 for the agency Annual Outing and for membership in the Century Club, honors not often attained by a man so young and so new in the business, as Mr. Rote joined the Equitable forces in 1911.

Service That Serves

The very best kind of service is that which to a great extent, anticipates your wants. We treat our customers in an individual way—Anticipating their wants, catering to them carefully, treating them in a friendly spirit, and above all we guarantee satisfaction in every transaction. No greater effort could be made any-where to give you a service so complete, so personal and pleasing. A service that makes you feel satisfied and warrants that—"Glad to Come Again"—feeling. Try us for service that serves.

KRUMRINE DRUG STORES
State College Bellefonte



Anticipating your wants for Pennsylvania Day and the house parties, we have just received a fresh shipment of Samoset chocolates, bulk and package, from the factory.

Oh, yes, rather forgot to mention that we serve sodas, hot and cold.

GRAHAM, ON THE CORNER



Ambition

to excel in any sport is rendered easier by being properly equipped. A. G. Spalding & Bros. are outfitters to champions, whose implements must be invariably right. Quality counts.

Spalding's Catalogue is now ready—free for the asking.

A. G. SPALDING & BROS.
126-128 Nassau St., 520 Fifth ave., New York.

The Quality Shop

J. H. MUSSER
American Gentlemen Shoes
Dry Goods, Groceries, Notions
A share of your patronage respectfully solicited. Quality guaranteed at reasonable prices

WATCH THIS SPACE

RAY D. GILLILAND, P. D.

Druggist

Drugs Sundries Stationery
Toilet Articles
Students' Supplies

— Prescriptions a Specialty —

STATE JEWELRY

Whitman and Huyler Chocolates

Nittany Inn Block
College Ave.

Fort Pitt Hotel

C. A. Blanchard
Manager

Penn Avenue and Tenth Street
Pittsburgh, Pa.

Smith Photographer

Sole agent for Eastman Goods

New Panoramic Camera
and up-to-date apparatus and methods

212 East College Avenue
State College

The Toggery Shop

Men's Furnishings & A. G. Spalding & Bro's Athletic Goods & The Heidcap and Tailormade Clothing & A full assortment of College Pennants & & &

C. W. SMITH
South Allen Street

Fisher's Shoe Store

We have the Shoes that will prove their value

All the Standard Makes

**Illinois Life Insurance Company
The Giant of the West**

All forms of policies written and through our Agencies you can pay the annual premium in monthly installments
Policy and receipt for the first years premium delivered at once

LOCKYER & ATWOOD, INCORPORATED
State Managers
Philadelphia, Pennsylvania



Copyright Hart Schaffner & Marx

Stylish Coats

for Cold Weather

Winter coats need to be warm and well made, and that's where you realize the importance of the high standard of quality and the superiority of the tailoring in these coats of ours. But good style is not to be forgotten, even when the consideration is warmth and comfort, and these coats we are showing for cold weather wearing have a style "their own". Long, medium length and short coats in a number of models.
See our showing at \$20 and 25

Full Dress Requisites

The Sim Shop

Will serve you well with a varied selection and diversity of the new and absolutely correct things for evening wear. Clothes and accessories that are proper and in good form. A showing of the plainer conservative styles as well as the new smart things just out this season—all with a positive assurance of correctness.

Care in not transgressing "good form" in Evening clothes is far more important than in other matters of dress, and your evening or evenings will not be marred by a feeling of doubt or reproach from having selected here. Everything is "exactly right" to the smallest detail.

Ready to wear suits here; your size ready to put on, as low as \$25 and the Hart Schaffner & Marx suits \$35, \$40 up to \$50

Evening Waistcoats \$3, \$3.50 and upwards in conservative fabrics and cut, and some new clever styles just out, as well as some of our own designing.

Evening Shirts, plain bosoms \$1.50, tucked bosoms \$2, \$3.50 and \$5.

Evening Reefers (Protectors) \$1.50 up Studs 50c to \$1.50, Stud, Vest and Cuff Button Sets \$1.50 to \$3.50

Gloves of Leather \$1.50, Silk Gloves \$1 and \$1.50

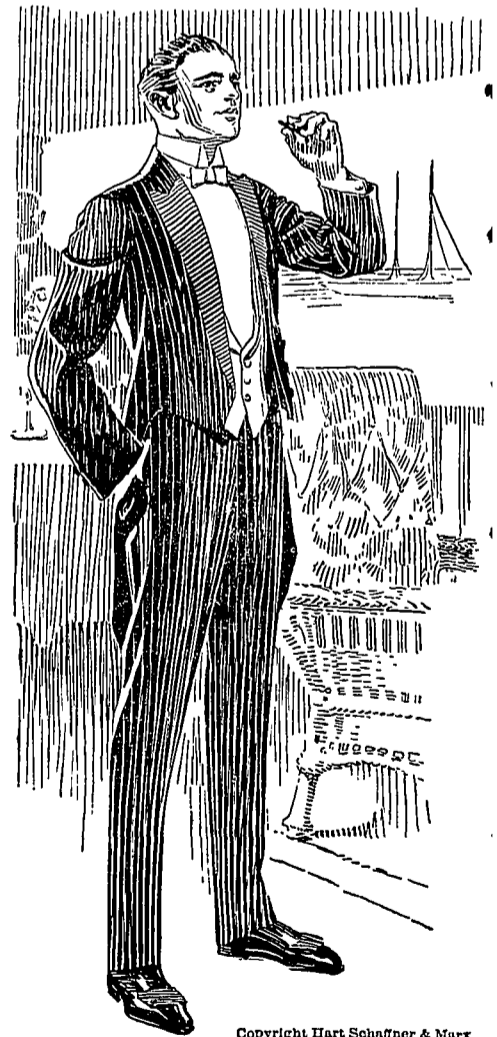
French Silk Hats \$7.50, Opera (Crush) Hats \$6.50

Ties 25c to \$1.00, Stock Ties \$1.50

DRESS SUITS TO HIRE

\$2.50 an evening, and we suggest early reservation.

For Street Wear: New Neckwear, Gloves, Shirts, New Shapes in Hats



Copyright Hart Schaffner & Marx

Sim, The Clothier
Correct Dress
BELLEFONTE AND STATE COLLEGE - PA.