

Continued from page 1

third, tied (Foster '14, McFarland '14, Mathers '15, dividing points one and one third apiece.)

16 pound shot put—Won by Lamb '15; second Ewing '15; third McVean '14. Distance 37 feet 9 inches.

16 pound hammer throw—Won by Lamb '15; second Bebout '14; third McVean '14. Distance 149 feet 9 1-4 inches.

Discus throw—Won by Lamb '15; second Ewing '15; third, Berryman '15. Distance 103 feet 10 inches.

Officials—Prof. Wright, referee; Clerk of course Lewis; Timers, Garver and Fisher; Judge, Captain Fry; Starter, Watts.

On Monday, May 6, a mass meeting for the nomination of officers for the Athletic Association, and of assistant managers of baseball and general athletics, will be held in the Old Chapel from six to seven p. m.

The Mining Society will hold a banquet on Saturday May 11, at McAllister Hall.

## The Toggery Shop

Men's Furnishings & A. G. Spalding & Bro's Athletic Goods & The Heidcap and Tailormade Clothing & & A full assortment of College Pennants & & &

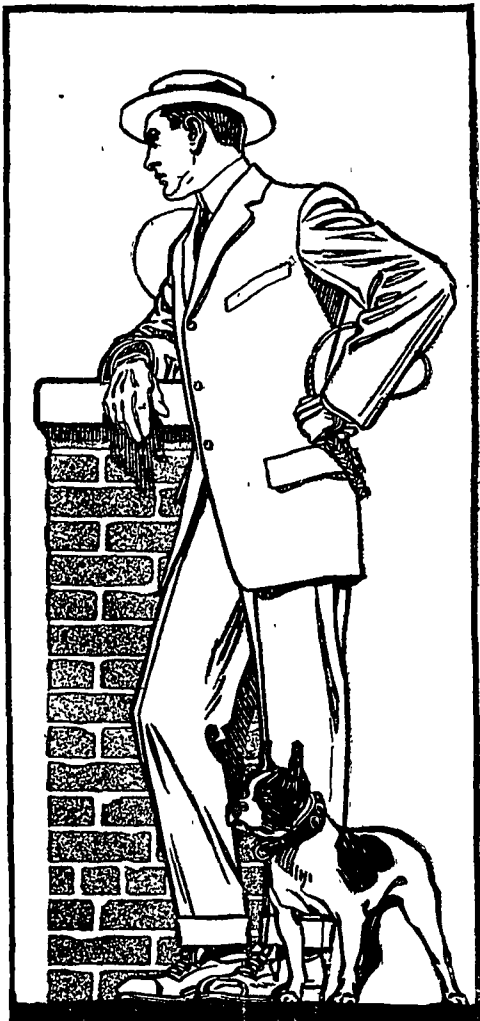
C. W. SMITH  
South Allen Street

Headquarters for

WALK-OVER CRAWFORD BANISTER **Shoes** EDUCATOR PATRICIAN COUSINS

Always in stock, a good line of gymnasium shoes. JUST ARRIVED: A line of early Spring Shoes, in both Men's and Womens.

C. N. FISHER  
Successor to A. H. Hartswick



Copyright Hart Schaffner & Marx

### Fashion Display

Thursday and Friday

May 2nd and 3rd

Nittany Inn

Ready to wear Clothes

Suits Raincoats

Outing trousers

Full dress Suits

Custom tailoring

**SIM THE CLOTHIER**  
CORRECT DRESS FOR MEN  
BELLEFONTE

Clothes Distributor of Hart, Schaffner & Marx; Garson Meyers & Co.; Pellheim.

### The Quality Shop

An establishment which is noted for its fine quality of letterpress printing. Every order receives the personal attention of the manager thus insuring perfect satisfaction

The Nittany Printing and Publishing Company  
State College

### Pool Billiards Bowling

TOBACCO CIGARS  
CIGARETTES

### Meek's Pool Room

J. B. MARTIN  
SOLE AGENT FOR  
SEALSHIPT OYSTERS  
CHOICE FRUIT  
South Allen Street, opposite the Postoffice

HENRY GRIMM  
FINE TAILORING  
Established 1831  
CLEANING PRESSING  
REPAIRING

The First National Bank  
BELLEFONTE  
Capital \$100,000 Surplus \$125,000  
Charles McCurdy President Jas K. Bernhart Cashier

I. C. HOLMES  
STAPLE and FANCY GROCERIES, FRUITS  
Best Quality Best Service  
Your patronage solicited  
ALLEN ST. STATE COLLEGE

James M. Williams  
General Tinning, Roofing  
Spouting and Furnace Work  
Shop; South Frazier street

Sheffler's Restaurant  
Opposite Hotel  
Pies Sandwiches Soups

### NOTICE!

The largest and best line of  
APOLLO CHOCOLATES

in town can be found at

### Harvey Brothers

Bakers and Confectioners

—SUNDAES and SODAS—  
our great specialty

The Nittany Inn Building

### The Enterprise Clothing Store

125 South Allen Street

Latest creations in neckwear and haberdashery, readymade suits in stock. Orders taken for made to order clothing.

MODERATE PRICES  
COURTEOUS TREATMENT

M. Karwitz, Prop

Nittany Light, Heat and Power Company

State College, Penn'a

### A. G. SPALDING & BROS.

The Spalding Trade-Mark are the Largest Manufacturers in the World of OFFICIAL EQUIPMENT FOR ALL ATHLETIC SPORTS AND PASTIMES

is known throughout the world as a Guarantee of Quality

A. G. SPALDING & BROS.  
NEW YORK  
126-128 Nassau Street 29-33 West 42d Street

### BUSH HOUSE

BELLEFONTE PENNA  
Rate per day \$2.50 With bath \$3 per day  
—W. L. DAGGETT—

### Footer's Dye Works

DYEING AND DRY CLEANING  
Goods sent on Thursdays of each week  
Mrs. Roundtree  
119 South Burrows Street

F. D. WEAVER  
UP-TO-DATE LIVERY

Opposite the Pastime Both Phones

### The Meek Drug Store

Ray D. Gilliland, P. D. Druggist

Drugs Sundries Stationery  
Toilet Articles  
Students' Supplies

—Prescriptions a Specialty—

STATE JEWELRY

Agency for  
WHITMAN'S CHOCOLATES

### Fort Pitt Hotel

C. A. Blanchard  
Manager

Penn Avenue and Tenth Street  
Pittsburgh, Pa.

### E. L. GRAHAM & COMPANY

Dry Goods Groceries  
Sporting Goods  
East College avenue Phones

### J. P. HAGMAN

Strictly : Firstclass : Tailoring  
High Grade Gents Furnishings  
127 S. Allen Street

### R. C. PEARCE

Dry Goods, Notions, Shoes, Groceries and Queensware  
Hotel Block W. College Ave

## McAllister Hall

### State College Dining Room

Under New Management

Students' regular board a week \$3.00 Students' single meals 35c Transient 50c

Catering to Fraternities and Glasses a Specialty

All new equipment

A. L. BASCOMB & BROTHERS, Proprietors