



THE BASKETBALL TRIP

Penn State Five Wins Two and Loses Two in the East. Extra Period Necessary in Manhattan Game. Mauthe and Blythe in Line-up.

The Penn State quintette made a credible showing on the first trip of the 1911-12 season by defeating New York University 19 to 18, and West Point 30 to 16. The team was downed by Manhattan college 22 to 19 and by St. John's University 25 to 17. All of the four games were played under the new rules which prohibit dribbling with two hands.

Our varsity five vanquished its first opponents, New York University, on December 13 by a single point. Shore played exceptionally well in this game making three field goals in rapid succession during the last few minutes of play, and these followed by Craig's difficult goal ten seconds before the final bell rang, spelled victory for State.

The Manhattan game was played last Thursday night on the Irish-American Athletic Association floor in New York City. State played well during the first half of the game and at the end of the first twenty minutes of playing the score stood 16 to 13 in favor of the Blue and White. Manhattan took a brace in the second half, holding State almost to a stand still. With but a half minute to play, a Manhattan player caged the ball which tied the score 18-18. An extra five minute period was played which resulted in two field goals being scored for Manhattan and a foul goal for State.

On Friday night Penn State lost to the St. John's University team 25 to 17. State clearly outplayed its opponents in the first half of the game and kept in the lead until the middle of the second half when the "Johns" tied the score. Good shooting by the University boys then won the game for them.

The State team arrived at West Point last Saturday morning where it was given the most courteous treatment possible. A special lunch was served for the visiting team in the Mess Hall of the Academy. In the afternoon the Army was defeated 30 to 16 in its new wonderful gymnasium which has three basketball courts, the middle one being used for the State game. The game was witnessed by many ladies, who with their escorts, many of whom were officers, were seen on each side of the court and around the circular track in the balcony.

The scores of the four games follow: December 13 at New York City. Penn State 19 New York University 18
Shore F. Crawford
Craig F. McLaughlin, J
Wilson C. McLaughlin, C
Blythe G. Moore
Mauthe G. Josephs
Field goals—Shore 5, Craig, Wilson, Blythe, J. McLaughlin 4, Josephs, Moore. Foul goals—Shore 3, Moore 5, Josephs. Referee, Quigg. Time—Two 20 minute halves. Score end of first half—New York University 7, State 6.

December 14 at New York City. Penn State 19 Manhattan 22
Shore F. (Haulehan) Ryan
Hay (Craig) F. Suarez
Hartz G. Leonard
Blythe C. Flynn
Mauthe G. Laesch
Field goals—Shore 2, Hay, Hartz, Mauthe, Suarez, Leonard 3, Laesch 3, Haulehan 2. Foul goals—Shore 9, Laesch 6. Referee Thorpe. Time—Two 20 minute halves. Score end of first half—Manhattan 16, State 13.

CALENDAR.

TUESDAY, DEC. 26

Harrisburg Club Dance, Masonic Hall, Harrisburg.

THURSDAY, DEC. 28

Washington County Club Dance, McDonald, Pa.

FRIDAY, DEC. 29

Pittsburgh Club Banquet and Smoker, Fort Pitt Hotel, Pittsburgh.

SATURDAY, JAN. 6, 1912

8:00 p. m. Auditorium. Ross Crane in Y. M. C. A. Entertainment Course.

SUNDAY, JAN. 7

10:00 a. m. Old Chapel. Freshman Chapel.

11:00 a. m. Auditorium. Chapel Service by Dr. Joseph S. Walton, of George School.

6:30 p. m. Old Chapel. Y. M. C. A. meeting.

TUESDAY, JAN. 9

7:30 p. m. Armory, 1913 vs. 1914 in class basketball.

December 15 at New York City.

Penn State 17	St. Johns 25
Shore F.	Schmulk
Wright (Craig) F.	Keenan
Wilson C.	Tracey (Mallory)
Mauthe G.	Greeney
Hartz (Blythe) G.	Burhill

Field goals—Shore, Hartz, Craig 2, Schmulk 2, Tracey 3, Greeney 2, Mallory. Foul goals, Shore 9, Schmulk 9. Referee, Thorpe. Time—Two 20 minute halves. Score end of first half—St. John's University 9, State 7.

December 17 at West Point, New York.

Penn State 30	Army 16
Shore F.	Van Vliet
Craig F.	Roberts (Arnold)
Wilson C.	Boyd
Blythe G.	Arnold
Mauthe G.	McTaggard (Morton)

Field goals—Shore 3, Craig, Wilson 5, Blythe 3, Roberts, Boyd 3, Morton 2. Foul goals—Shore, 6; Roberts, Arnold 2, McTaggard. Referee, Thorpe. Time—Two 20 minute halves. Score end of first half—State 13, Army 9.

Meeting of Educational Association

The annual meeting of the Pennsylvania State Educational Association will be held in Philadelphia during Xmas week, Dec. 26, 27, and 28, 1911. Quite a number of the faculty are planning to attend some of the sessions. Dean Weber will read a paper before the general session on "The Proper Relation between Normal School and College". Dr. Runkle will read a paper before the high school department on "What the Pennsylvania State College is doing for the Training of High School Teachers."

Interesting C. E. Meeting.

Tuesday evening Mr. H. M. Stofflet, 1912, gave an interesting talk on concrete construction. The basis of the discussion of the evening was gained through the eight years of experience that the speaker had before coming to Penn State. The talk was illustrated by plans showing concrete construction in progress at Schenectady, New York. At the meeting plans for the organization of a "Triangle and Rod" club, as exists in other colleges, were also discussed.

Freshman Class Officers Elected.

The recent election in the Freshman class resulted as follows: President, H. F. Moffitt; vice-president, W. S. Parkinson; secretary, C. W. Clemmer; treasurer, J. D. Gold; and soccer manager, A. N. Munhall.

A WEEK FOR FARMERS

December 27, 1911, to January 3, 1912, the Time When Farmers From All Over the State Assemble for Farmers' Week—Instructive Program Arranged.

On Tuesday and Wednesday of next week, farmers from every part of the state and from the surrounding states will gather to attend the annual Farmers' Week conducted by the School of Agriculture and Experiment Station. For the men who work on the farm the year round and who have no means of learning the scientific principles of their profession, a more profitable week could not be spent. The program for the week includes lectures and practical demonstrations on phases of agricultural questions which confront the farmer. A more thorough and instructive list of lectures has been seldom seen on one program. In addition to the lectures given by members of the instructional staff of this and other agricultural colleges, men, who have had years of experience in practical agricultural work along different lines, have been secured to give the results of their valuable experiences.

During the week a number of associations will meet.

The Pennsylvania Plant Breeders' Association will hold its business meeting in the Old Chapel, Monday, Jan. 1, at 5:15 p. m. The meeting is open to all interested persons. On Monday, Jan. 1, at 3:30 p. m., in the Old Chapel, there will be a round table discussion upon the subject of "Plant Breeding and Crop Improvement," and it is hoped that everyone will feel free to join in the discussion.

The Pennsylvania Experiment Association, an organization composed of former and present students in the Winter Courses, as well as in other courses, in the School of Agriculture, will hold a business meeting for the election of officers and for the discussion of results obtained during the year on Monday, January 1, at 1:30 p. m., room 103 Agriculture building.

Lectures will be held during the entire day and part of the evening. Aside from these, practice in cooking will be given with each subject offered by the Department of Home Economics. Practice in apple packing will be given each day during the week from 8:30 to 11:45 a. m. and from 2:00 to 5:15 p. m. (Agr. Bldg. 209.) Practice in judging corn will be given from Dec. 28 to Jan. 2, both inclusive, from 2:00 to 3:30 p. m. (Attic Agr. Bldg.) Practice in figuring fertilizer formulas will be given from Dec. 29 to Jan. 3, both inclusive, from 10:15 to 11:45 a. m. (Agr. Bldg. 207).

Religious services will be held in the Auditorium Sunday, Dec. 31, at 11:00 a. m. General James A. Beaver will speak.

The Religious Forward Movement.

The Men and Religions Forward Movement being organized in the colleges and the churches throughout the country will be inaugurated at Penn State the last few days in January and the first week in February under the leadership of Henry Wright of Yale. Mr. Wright will be assisted by Mr. and Mrs. Charles Houston, other prominent laymen and alumni of the college.

Football Letters Awarded.

At the Wednesday morning mass meeting the football men who were awarded the varsity "S" are as follows:—Captain Very '13, Manager Orr '12, Harlow '12, Hermann '12, Goedecke '12, Mauthe '13, Engle '13, Page '13, Hansen '13, Wilson '13, Miller '14, Bebout '14, King '14, Barry '14, Clark '14, and Berryman '15.

The privilege of wearing the varsity football "S" is granted to any member of the team who has played two full quarters in each of the six regularly scheduled games; or two full quarters in either the Pennsylvania and Pittsburgh games; or who has played two full quarters in both the Pennsylvania and Pittsburgh games. The regularly elected manager acting for the season is also awarded the "S."

Football Fatalities Lessened.

At the close of the 1911 football season, the list of casualties resulting from that game has been more than cut in half as compared to deaths and injuries sustained the previous year. Whether or not this decrease can be attributed entirely to the new rules is not certain, but it is an assured fact that the fatalities have been reduced to a minimum. In football games during 1910, 22 men were killed and 994 men injured; in 1911 the number of deaths totalled only 9 and the injuries 177. Although a sufficient number of serious defects have been found in the present rules to warrant a change, the original object for revising the rules is gradually being attained.

Fruit Train Over P. R. R.

A fruit train will run from Pittsburgh to Philadelphia in the first week of February over the Pennsylvania Railroad. The train will be under the supervision of the School of Agriculture. Probably one day will be given each of the main line divisions in order to give as many districts as possible all the benefits that can be derived from this source of instruction in the short time allotted. The subjects of the lectures will be orchard planting, orchard fertilization, marketing of apples, and market gardening.

Football Squad Entertained.

On Monday evening at 6:30, President and Mrs. Sparks entertained the members of the football team at dinner at the residence of the President. All the members of the varsity squad, with the manager and assistant managers attended the affair. After the dinner, a dance was held at which a number of the young ladies of the college and the town were present. The whole was a very enjoyable and suitable ending to a most successful football season.

Woman's Building Annex.

The house on the east campus, formerly occupied by Dr. J. P. Welsh, will be opened after the holidays for the Woman's Buildings Annex and will be occupied by students taking the Short Course and Home Economics. Miss Marjorie Lyon '11, will have charge of the building and will be an instructor in Home Economics.

Dr. W. R. Crane, Dean of the School of Mines, is attending the winter meeting of the Coal Mining Institute of America, held in Pittsburgh. Dr. Crane will deliver a paper on "Methods of Testing Mine Gases."

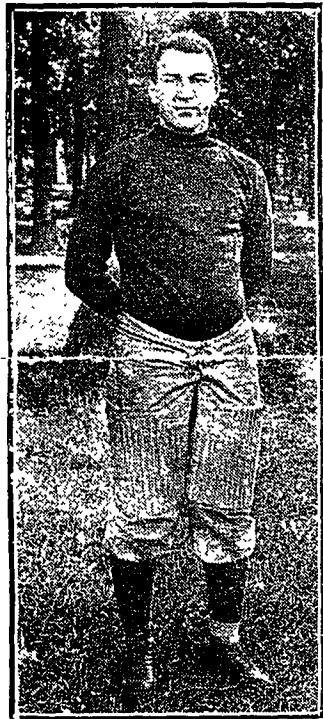
CAPTAIN J. L. MAUTHE

After Three Years of Excellent Work, Mauthe is Honored With Captaincy of 1912 Team.

At a recent election, J. Lester Mauthe was elected captain of the Penn State football team of 1912. As captain of the Blue and White team Mauthe will succeed Captain D. W. Very, who led our team this year to where it has never before stood in the eyes of eastern critics.

Mauthe prepared at Du Bois high school. Under the coaching of "Bob" Reed, the famous Princeton tackle, Mauthe developed into one of the best fullbacks in the preparatory schools of Western Pennsylvania. In 1908 he was selected as all-scholastic fullback of Western Pennsylvania.

With a reputation of being a good kicker and a consistent back, Mauthe entered Penn State with the class of 1913. His ability of punting, fierce tackling and general



knowledge of the game quickly secured for him a place on the backfield composed of "The Big Four," McCleary, Vorhis, Mauthe and Hirshman.

Mauthe played brilliant football during the whole of the 1909 season. Playing in the Penn, Indian and Pittsburgh games of that year, Lester had no difficulty in outdistancing every kicker that opposed him, while his work on the offense and defense compared favorably with that of the three other stars that represented one of the best backfields that ever originated in the Nittany Mountains.

Last year the 1910 team suffered a series of accidents and misfortunes, the greatest being due to the fact that Mauthe, the only veteran behind the line, had his ankle broken in a practice scrimmage just before the Sterling A. C. game. The loss was not alone of personal ability, but it deprived the team of the best punter in college, hurt the team play of the backfield to a large degree, and then necessitated the development of play to suit another fullback.

The present season has been a great success along football lines for Mauthe. The Philadelphia Ledger says of him:—"Mauthe, the Penn State fullback, is classed as full-