

STATE COLLEGIAN

Published on Thursday of each week during the college year by the students of The Pennsylvania State College in the interest of the Students Faculty, Alumni and Friends of the college.

Entered at the Postoffice, State College, Pa., as second class matter

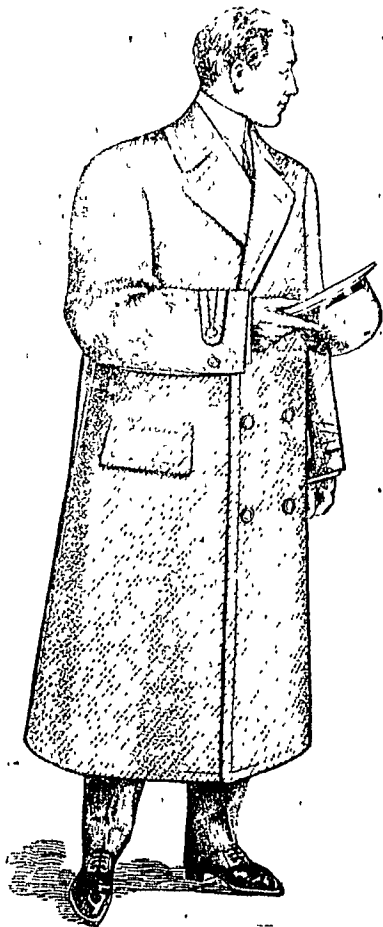
Editor in Chief  
C. MacC. BREITINGER, '11  
Assistant Editor  
R. F. HEMINGWAY, '11  
Associate Editors  
D. R. MASON, '11  
W. S. KRIEBEL, JR., '12  
W. P. LITTLE, '12  
B. S. RUSSELL, Jr., '13  
Business Manager  
C. F. PRESTON, '11  
Assistant  
E. A. JAMES, '12

SUBSCRIPTION.  
\$1.50 per year or \$1.25 if paid within 30 days after date of subscription.

THURSDAY, NOV. 10, 1910

**PENNSYLVANIA DAY EXERCISES** The annual Pennsylvania Day exercises of this institution will be held in the Auditorium on Friday morning, Nov. 11, at 10:30 o'clock. As this is without doubt the most-important event in the college year, with respect to demonstrating to the influential people of the state just what progress this college is making, it should receive the entire support of the student body. This is especially true at this time as this year is legislative year and a large number of the members-elect of both the upper and lower houses of the commonwealth will be among our visitors. The fact cannot be denied that the greatest impression that we can make on these men is that which gives them a general view of the whole student body in the Auditorium. The college in all its past history has never had the opportunity to present itself in such a prominent way as it has at this particular time, and what the college gains in this way must be gained by the student body. The services on Friday are not compulsory and there is really no necessity for such being the case. It is practically an assured thing that every man will make it a point to be present when he appreciates the fact that it is for the good of his Alma Mater. Take this to heart, State men, and support this important function. That loyal veteran State worker, General James A. Beaver, will preside at the exercises and you all appreciate what joy it brings to his heart to see the student body massed together, helping to turn the wheel of prosperity and advancing the name and spirit of Old Penn State!

**THE COUNTY CLUBS CAN HELP** With the approach of Pennsylvania Day comes a large delegation of out-of-town visitors and preparation must be made for taking care of them. We would suggest that the various County clubs in college take up this matter seriously and provide for the comfort of these people. Each County Club could easily take care of the men from its particular county and in this way vastly aid in facilitating the means of showing them the points of interest in and about the college. With regard to the arrival of eastern and western delegations, arrangement has been made for Pullman accommodations from both Philadelphia and Pittsburgh, the time of arrival here from the former city



**SIM THE CLOTHIER**  
CORRECT DRESS FOR MEN  
BELLEFONTE

You'll be interested, we're sure, in seeing the variety we offer in overcoats; from the regular Chesterfield or the boxback style, to the big storm coats for driving and everything between.

Long coats, short coats, medium length coats. Form fitting, boxback, medium back. Raglan shoulders, plain shoulders, convertible collars, plain collars, military collars. Fancy fabrics, plain subdued, and bright effects.

Overcoats, raincoats, galvadies. You'll surely like this overcoat showing we are making.

Overcoats \$15 to \$40.

Raincoats \$15 to \$30.

Rubberized cloth and galvadies \$10 to \$30.

being Friday morning, and from the latter place Thursday afternoon.

In all cases where possible those students who are personally acquainted with any of the legislators should make it a point to meet the trains.

**Herr Starcke's Courses.**

Herr Heinrich Starcke, the exchange professor detailed by the Prussian government through the Carnegie Foundation to spend a year of teaching and observation at this college, will offer the following courses during the second semester:

1. Ger. 54. Conversation and composition, which is open to all students whose grade in German 3, 4 or 5 is not below 75 and whose course does not require some other specified German.
2. Ger. 64. Advanced Conversation and Composition, a continuation of course 54. Only those whose grade in German is not below 75 will be eligible for this course.
3. Ger. 85. Phonetics, practice in pronouncing and reading German correctly and fluently. Open only as an extra to every body.
4. Ger. 88. Introduction to German life and culture. Open only to those who have had Ger. 3.

Students desiring to avail themselves of other exceptional opportunities should confer with the head of the German department, Prof. Fehr, at once, in order that the schedule, which is already under way, may accommodate as many applicants as possible. To wait until later may prove too late.

Prof. Starcke's fortnightly lectures in German under the auspices of the Deutscher Verein will be continued. All who are interested are invited to attend. The dates for these lectures are bulletined a day or two in advance in conspicuous places.

**Resolutions.**

God through his Almighty power, has seen fit to take away the father of our beloved classmate and friend, E. W. Fickes. Therefore, be it

Resolved, That we, the class of 1912, extend to our classmate and family our heartfelt sympathy in their hour of grief. Let it be further

Resolved, That copies of these resolutions be sent to the bereaved family, and placed upon the minutes of the class.

C. A. Robinson,  
J. H. Devor,  
F. W. Orr.

**The Wittany Inn**  
State College

UNDER THE MANAGEMENT OF  
**JAMES PAIKENS**

THE HOME OF THE  
PENN STATE  
FOOTBALL TEAM

THEIR FRIENDS WILL  
ALWAYS RECEIVE  
SPECIAL ATTENTION

**Fountain Pens**  
MOORE'S NON-LEAKABLE

Warranted to give satisfaction. Investigate before buying a pen

**G. H. HOUGHTON '12**

Krumholz's Brick, 193 S. McAllister street

**I don't talk; I make signs**

Lettering of trunks and suit cases my specialty. Poster, show and display cards

**CHAS. A. WOMER, State College**

**ROOM WANTED**

Student desires room for care of furnace or other work.

Student, P. O. Box 307

**H. W. Meyers**

**First Class Restaurant**  
Ice Cream and Confectionery  
106 EAST COLLEGE AVENUE

**The Best You Have.**

There are loyal hearts, there are spirits brave,  
There are souls that are pure and true,  
Then give to the world the best you have,  
And the best shall come back to you.

Give love, and love to your heart will flow,  
A strength in your utmost need;  
Have faith, and a score of hearts will show  
Their faith in your word and deed.

For life is the mirror of king and slave,  
'Tis just what you are and do,  
Then give to the world the best you have,  
And the best will come back to you.

Exchange

Mr. G. E. Webster, '05 was married last September to Miss Lillian Connor of Newark, N. J. Mr. Webster was recently transferred from the Bureau of Standards of the U. S. Geological Survey to junior chemist in the Bureau of Mines.

Professor H. K. Richardson presented a paper at the Seventeenth General Meeting of the American Electrochemical Society in Pittsburgh during the summer on "The Townsend Cell: its Behaviour under Various Current Densities."

We carry a full line of

**Students' Supplies**

The Athletic Store

**The Park Hotel**

Williamsport, Pa.

Headquarters for all "State" teams. Located opposite the P. R. R. station. Free bus to P. & R. R. station. Rates \$2.50 per day and upward

D. KAVANAUGH, Manager

**GEORGE B. JACKSON**

CIGARS, TOBACCO AND FRESH ROASTED PEANUTS  
A Full Line of Smokers' Fancy Articles.  
ALLEN ST., STATE COLLEGE, PA.

**The First National Bank**

BELLEFONTE  
Capital \$100,000 Surplus \$100,000

**O. F. SHAW, Harnessmaker**

J. B. MINGLE, Shoemaker

Allen Street

**G. E. Shaver**

Jeweler and Optician  
POST CARDS  
COLLEGE JEWELRY

**F. P. BLAIR & CO.**

BELLEFONTE  
JEWELERS AND OPTICIANS  
Cor of Brocherhoff House. All mail orders promptly attended to. Fine watch and jewelry repairing a specialty. Both phones

**J. C. MARKLE**

All Kinds of Choice Meats  
Fish in season  
138 College Avenue Both phones

**S. E. KIMPORT**

Headquarters for  
Choice Meats of All Kinds  
Frazier Street Both phones

**CHAS. A. WOMER**

Tonsorial Artist  
Your patronage solicited. First-class work guaranteed.  
UNDER HOTEL

**S's POOL ROOM and BARBER SHOP**

123 Allen Street

**The Centre County Bank**

Bellefonte

**C. D. CASEBEER**

Jeweler and Optician  
All kinds of repair work promptly done  
Eyes examined free. Private optical parlor.  
BELLEFONTE PENNSYLVANIA

**Sheasly & Gentzel**

Dry Goods, Groceries, Notions

**Furniture and Carpets**

Headquarter, for

FINE CONFECTIONERY

Nos. 200-206 College Avenue

**Cartswick's Shoe Store**

Headquarters for

Walk-Over  
Crawford SHOES.  
Banister

Meek Block Allen Street.

**The Potter-Hoy Hardware Co.**

Everything in Hardware  
Distributors for the  
PENINSULAR PAINT and VARNISH CO'S

complete line

ASPHALT ROOFINGS.

our specialty

BELLEFONTE, PA.

**Smith the Photographer**

and dealer in Eastman Supplies  
Also agent for

**Columbia Graphophones**

and indestructible Records

212 East College Avenue

State College

**The First National Bank**

State College, Pa.

**3% interest**

on time deposits, payable semi-annually

Accounts solicited

**H. A. EVEY Livery**

CAB WORK A SPECIALTY  
Both Phones

**Sheffler's Restaurant**

Opposite Hotel

Pies Sandwiches Soups