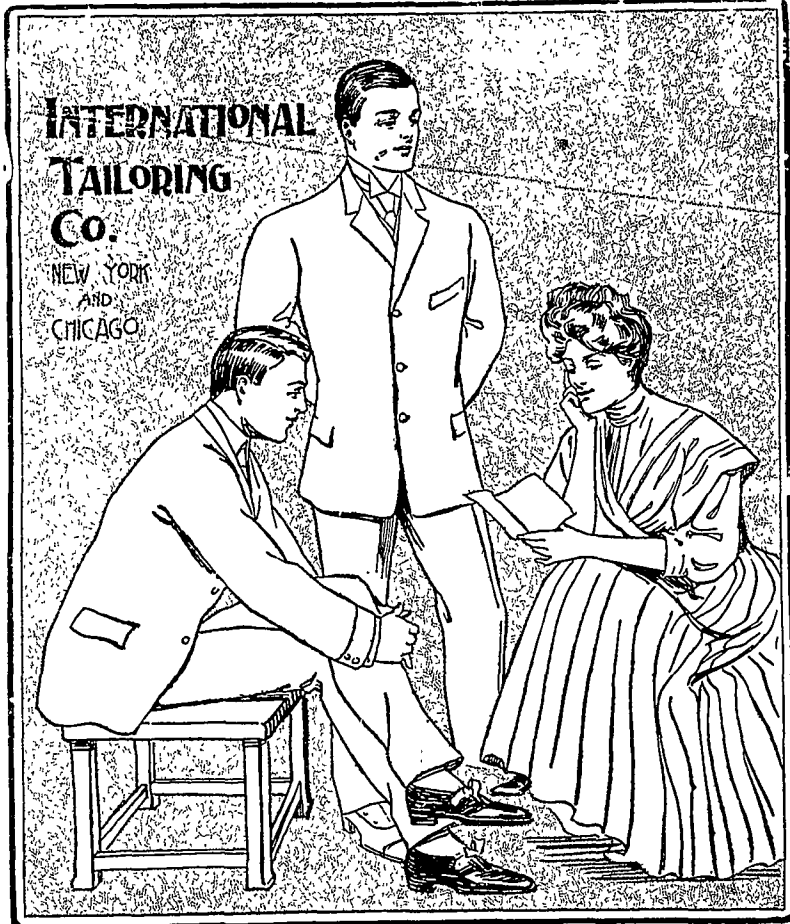


Meyersdale; J. Calvin Meyer, of Bellefonte; Harry S. Lydick, of Pittsburg; Samuel A. Steel, of Wilkinsburg; David H. G. Kuser, of New Berlinville; and Charles A. Bentley, of Monongahela. Most of these men are members of the appropriation committee.

**The New Beaver Field.**

The old grand-stand on Beaver field is being moved up to the new athletic field, where it will be placed along the woods on the west side of the track and gridiron. On each side of it will be built bleachers, so there will be a total seating capacity of about 1200. About 60 feet of bleachers will be built on each of two sides of the baseball diamond with a seating capacity of about 800. Along the south end of the field 16 tennis courts will be ready for use as soon as weather permits. While all these preparations are being made, arrangements are on foot for a fitting dedication of the field, the main feature of which will be a track meet.



**THE 1910 LA VIE**

*the best ever*

*Full limp leather binding*

*Roycroft style*

*Edition limited to subscribers only*

*Subscribe now*



*The Best Argument* we can offer for the character of our Clothes is the Clothes themselves. Every man who has worn them will acknowledge their superiority—their wonderful value and their undoubted merit. We show a remarkable diversity in the number of models and fabrics we display. ♣ ♣ ♣ ♣ ♣

CALL AND SEE US

**L. D. MATTER, AGENT**

ROOM 328 MAIN

**Bowes and Thompson Motor Car Co.**

STATE COLLEGE, PENNSYLVANIA

The Finest Touring Car Service in the County

Trips made to Bellefonte, Penns Cave, Tyrone and other points. Rates are moderate. For further information write, phone or wire Wm. F. Thompson, manger Bell phone

**Mother  
Dunn's  
Grub**

AT  
McALLISTER HALL

W. T. DUNN

Three Dollars a week And worth it all