

**Senior Week Program.**

The following is a program for Senior Week, lasting from Friday, January 29 to Monday, February 1.

Friday evening—Senior dance.

Saturday afternoon—Athletic exhibition.

Saturday evening—Basketball, State vs. Bucknell; mandolin and glee club concert.

Sunday evening—Sacred concert.

Monday afternoon—Skating carnival, Beaver Field.

Monday evening—Terpsichorean dance.

**"The Engineer" Issued.**

The first issue of "The Engineer" for the present year appeared this week, and shows a marked improvement over last year. It has seventy pages, and contains eight articles by State men, each one of which is of high character. It is to be regretted that lack of space prevents a full review of the issue. Alumni are urged to write to K. H. Marsn, manager, for information concerning this paper.

**A Christmas Invitation**

Mrs. Sparks desires me to invite every student who does not go home for Christmas to come to the house on Saturday evening, December 26th, at 8 o'clock, for a Christmas celebration. Edwin E Sparks.

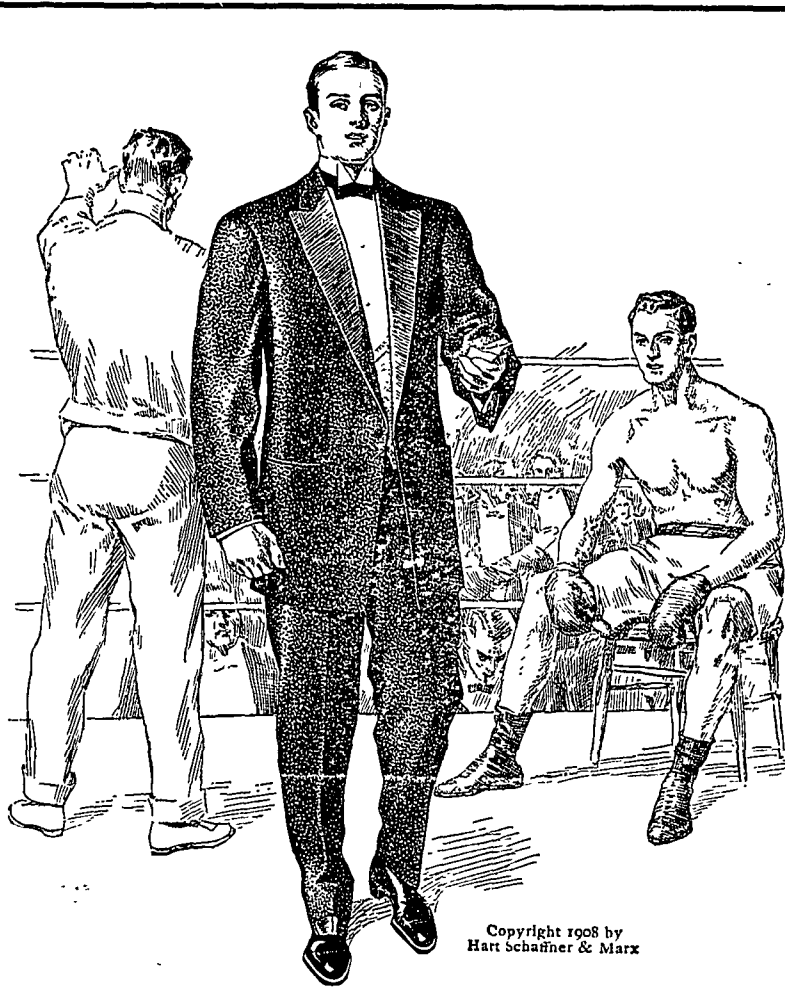
**I EARNED MY WAY THRU COLLEGE WRITING FOR NEWSPAPERS AND MAGAZINES. ANY INTELLIGENT MAN OR WOMAN CAN DO THE SAME BY FOLLOWING MY METHOD. KENNETH D. STEERER, MARQUETTE BLDG., CHICAGO.**

**BELLEFONTE CENTRAL RAILROAD**  
Time Table in effect Jan. 1, 1908.

Westward Read down			Stations	Eastward Read up		
No. †1	No. †3	No. 5		No. †2	No. †4	No. †6
a. m.	a. m.	a. m.	Lv. Ar	a. m.	p. m.	p. m.
8 30	10 15	2 00	Bellefonte..	8 50	12 50	6 16
8 35	10 20	2 07	.. Coleville..	8 40	12 30	5 50
8 38	10 23	2 12	.. Morris ...	8 37	12 27	4 43
8 43	10 27	2 17	.. Stevens ...	8 35	12 25	5 40
			.. Lime Centre.			
8 46	10 30	2 21	Hunters Park	8 31	12 21	3 0
8 50	10 34	2 26	.. Fillmore...	8 28	12 18	5 35
8 55	10 40	2 32	.. Briarly ...	8 24	12 14	5 30
7 00	10 45	2 35	.. Waddles ...	8 20	12 10	5 25
7 12	10 57	2 50	.. Krumrine..	8 07	11 57	5 07
7 25	11 10	3 05	State College	8 00	11 50	5 00
7 27		3 10	.. Strubles...	7 45		4 20
7 37		3 15	.. Bloomsdort..	7 40		4 0
7 35		3 20	Pine Gr. Mills	7 35		4 0

† Daily except Sunday. † Stop on flag  
Trains of the Bellefonte Central R. R. connect at Bellefonte with trains of the Penna R. R. for points east and west.

F. H. THOMAS, Supt



If you don't own a dress suit or tuxedo and want to; or if your old one ought to be discarded; here's your chance, and here's a Hart Schaffner & Marx dress suit waiting for you. We can fit any man correctly, and we'll show you that even in this most critical matter in clothes buying, ready made is the only right way to buy dress clothes, or any other clothes.

You'll find these Hart Schaffner & Marx suits perfect in every way; and the prices are low enough for anybody. Full dress and tuxedo suits to order. Full dress accessories—shirts, collars, neckwear, gloves, waistcoats

Jas. E. Harshberger  
State representative  
139 Frazier street

**SIM THE CLOTHIER**  
CORRECT DRESS FOR MEN  
**BELLEFONTE**

Distributor Hart Schaffner & Marx, Carson Meyer & Co., Rosenwald & Wiel Pellham clothes.