

the work we do for them, our relations being absolutely confidential in every instance; but you can find our satisfied customers everywhere, firms and corporations, students, writers, publishers, professional and business men, schools and colleges, clubs and associations, public officials, Senators and Congressmen. They are under no such confidential obligation, ask them for our "efficiency rating;" ask the commercial agencies and banks about our financial standing and reputation; ask the large libraries and educational institutions why they recommend us. They will tell you that your road to increased efficiency lies thru our organization. We seek, by means of this offer, the privilege of convincing you thru service. May we have it?

THE NATIONAL CLEARING HOUSE FOR SERVICES AND INFORMATION

2942 Newark St., Washington, D. C.

Gymnasium Classes.

The schedule for gymnasium classes has been arranged as follows:
First division of Sophomores on Mondays.

Second division of Sophomores on Thursdays.

First division of Freshmen on Tuesdays.

Second division of Freshmen on Fridays.

Preps on Wednesdays and Saturdays.

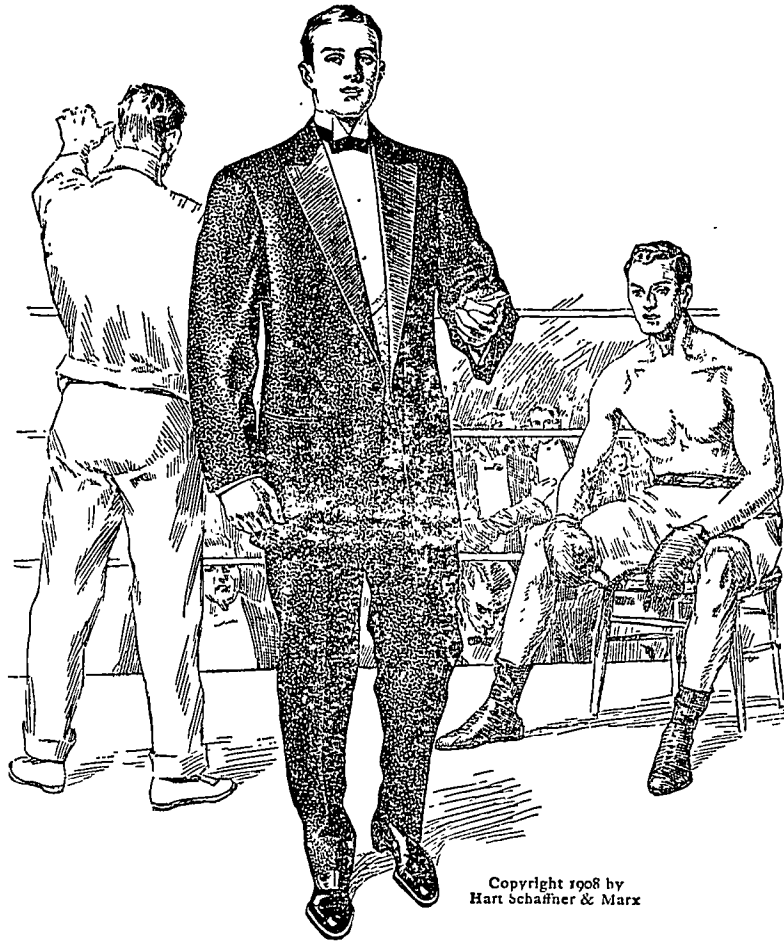
The hour for the class is from 4:15 to 5:15.

BELLEFONTE CENTRAL RAILROAD
Time Table in effect Jan. 1, 1908.

Westward Read down			Stations	Eastward Read up		
No. +1	No. +3	No. 5		No. +2	No. +4	No. +6
a m	a m	m	Lv	Ar		
6 30	10 15	2 00	.. Bellefonte..	8 50	12 50	6 10
6 35	10 20	2 07	.. Coleville..	8 40	12 30	5 50
6 38	10 23	2 12	.. Morris ...	8 37	12 27	4 43
6 43	10 27	2 17	.. Stevens ...	8 35	12 25	5 40
6 46	10 30	2 21	.. Lime Centre.	8 31	12 21	3 03
6 50	10 34	2 26	.. Hunters Park	8 28	12 18	5 35
6 55	10 40	2 32	.. Fillmore...	8 24	12 14	5 30
7 00	10 45	2 35	.. Blairy ...	8 20	12 10	5 25
7 07	10 52	2 42	.. Waddles ...	8 07	11 57	5 07
7 12	10 57	2 50	.. Krumrine..	8 00	11 50	5 00
7 25	11 10	3 05	.. State College	8 00	11 50	5 00
7 27		3 10	.. Strubles..	7 45		4 30
7 37		3 15	.. Bloomsdorf..	7 40		4 0
7 35		3 20	.. Pine Gr. Mills	7 35		4 0

+ Daily except Sunday. f Stop on flag
Trains of the Bellefonte Central R. R. connect at Bellefonte with trains of the Penna. R. R. for points east and west.

F. H. THOMAS, Supt



Copyright 1908 by Hart Schaffner & Marx

IF you dont own a dress suit or tuxedo and want to; or if your old one ought to be discarded; here's your chance, and here's a Hart Schaffner & Marx dress suit waiting for you. We can fit any man correctly, and we'll show you that even in this most critical matter in clothes buying, ready made is the only right way to buy dress clothes, or any other clothes.

You'll find these Hart Schaffner & Marx suits perfect in every way; and the prices are low enough for anybody. Full dress and tuxedo suits to order. Full dress accessories—shirts, collars, neckwear, gloves, waistcoats

Jas. E. Harshberger
State representative
139 Frazier street

SIM THE CLOTHIER
CORRECT DRESS FOR MEN
BELLEFONTE

Distributor Hart Schaffner & Marx, Carson Meyer & Co., Rosenwald & Wiel Pellham clothes.