

Charles F. Noll, '06, has been secured to fill the position of assistant agronomist in the Department of Agriculture. He took up the new work a few days ago.

R. B. Harris, '08, went to his home at Coatesville on Thursday, having had a serious attack of rheumatism.

Among the recent visitors to the college have been E. E. Godard, '03, A. W. Lomis, '07, and L. F. Beckert, '07.

Physical Director W. N. Golden has been confined to his home for several days with rheumatism.

The Wrestling Club will give an exhibition on Friday of next week. Details will be given later.

The meeting of the Chess Club set for Saturday the 28th has been postponed one week.

Messrs. H. W. Mitchell, '90, and A. C. Reed, '92, visited the college last week.

**ALUMNI.**

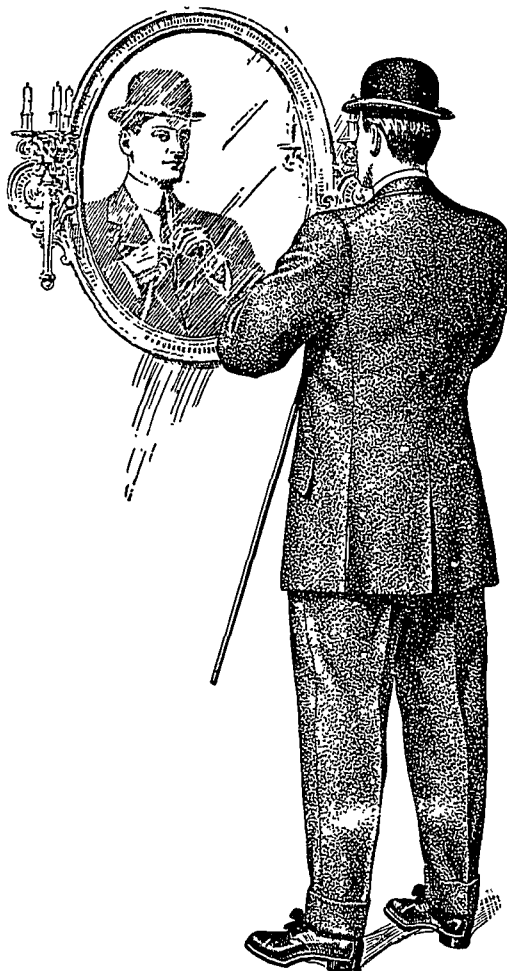
Jerome J. Morgan, '05, assistant professor of chemistry in Maryland Agricultural College, has resigned to take the position of assistant chemist in the miscellaneous laboratory of the Bureau of Chemistry, U. S. Department of Agriculture. G. E. Cohen, '07, has taken the position formerly occupied by Mr. Morgan.

J. B. Smith, '07, is assistant engineer in the mining department of the D. L., and W. R. R. at Scranton.

J. J. K. Madden, '05, was married to Miss Gladys Mitchell of Schenectady, N. Y., on February 15.

Hugh J. Boyle, '03, and wife, of Youngstown, Ohio, are the happy parents of a future co-ed for State.

D. D. Dodge, '07, is assistant mining engineer with the G. G. Markle Coal Co., at Jeddo, Pa.



**Sack Suits**

As shown by the SIM Store are entirely different from what you'll see worn by the ordinary man

EXTRAORDINARY is a good word for them, for they're truly nearest perfection clothes

Their fit, hang, and grace make them stand out from the usual sort of clothes

Critical dressers — we invite your attention to these high grade garments. Let us show you

**SIM THE CLOTHIER**  
CORRECT DRESS FOR MEN  
**BELLEFONTE**

Copyright 1908 by Hart Schaffner & Marx  
State Representative  
J. G. Stoll, 341 McAllister Hall

**Skating Rink**

GOOD FLOOR  
BEST SKATES

**Knisely Brothers**

**THE MALLORY STUDIO**  
PHOTOGRAPHY

BELLEFONTE PENNA  
Specialty of Oval Portrait Frames  
M. Ferguson, '09, agent, Kappa Sigma

**HARDWARE**

Good Goods - Lowest Prices  
Honest Inspection and Fair Judgment is all I ask....

**JOHN I. OLEWINE**  
BELLEFONTE

One pound (95 sheets) fine Linen Fabric Paper, stamped in one color, from especially Engraved Die; one box (50 envelopes) plain, to match above paper; 50 Calling Cards from new plate script, all for **\$2.75**

Menus and Dance Programs  
**STOLL, ROOM 341 McALLISTER HALL**