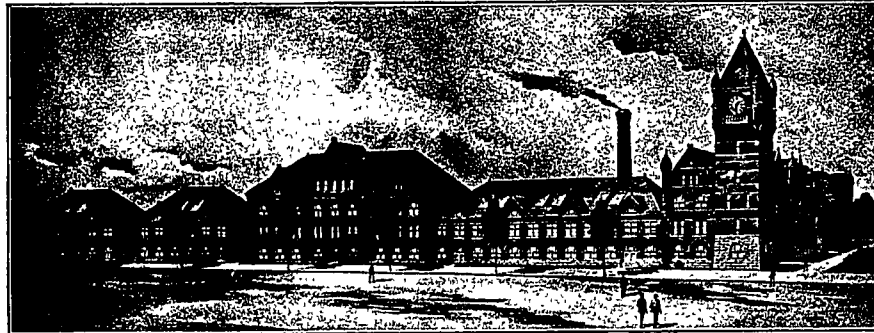


PROPOSED EXTENSION OF THE ENGINEERING BUILDING



COLLEGE AVENUE SIDE



CAMPUS SIDE

A Sketch of Dean Reber.

Prof. Louis E. Reber, Dean of the School of Engineering, was born at Nittany, Pa., on February 27, 1858, and was graduated from The Pennsylvania State College in 1880 with the degree of M. S. He spent his first year after graduation here as an instructor in mathematics, and as commandant of cadets. Then, after spending a year of graduate study at the Massachusetts Institute of Technology, he returned to the Mechanical Engineering department. Since that time, engineering in this institution has undergone a phenomenal growth, due in a large measure to the exceptional ability and power of Prof. Reber. When Prof. Reber first came here the shops and laboratories were located in the old pump-house which stands on the corner and were very crudely equipped. The drawing was done in a room of the Main Building. In 1892 he supervised the drawing up of the

plans for the new engineering building, and even now this is inadequate, owing to the constantly increasing number of engineering students. Up to 1890 the enrollment of engineers was not more than fifty, while in 1907 there were 111 graduated. At the time of the first M. E. class in 1889, the college was unknown except in a few small localities, but since then, largely through the kind of men turned out under Prof. Reber's charge, it has obtained high and well known standing among the industrial and educational institutions of the country.

Prof. Reber's engineering ability has frequently been recognized by the state of Pennsylvania. He organized and installed the mining exhibits at the Chicago World's Fair and at St. Louis. During the last session of the Legislature he was called upon to examine the defective ventilation of the new capitol building, and to pass expert judgment

upon the security of the massive chandeliers. His plan for the permanent improvement of the heating system was approved.

Prof. Reber is a member of the American Society of Mechanical Engineers; The Franklin Institute of Philadelphia; The Society for the Promotion of Engineering Education; The American Association for the Advancement of Science. He is also the author of many forceful articles on engineering and education which have appeared in prominent magazines. His new work at the University of Wisconsin will be as Director of Extension, and he will have full charge of a line of work which will extend university education into almost every home of the state. We regret that we are to lose his valuable service at so critical a time, and hope he may be equally successful in his new place.

R. W. Swenk, '07, was a recent visitor at the Phi Delta Theta house.