

Albert Yeckley, a fast performer in the back-field, possesses that "Yeckley" fighting blood, famous on Beaver Field. For two years he has battled for a 'Varsity position, but this year a badly injured ankle kept him out of the game nearly all season. Next year he will not return to college.

Paul Reece has for four years come out on Beaver Field cheerfully and courageously to play the second part to such a star as Captain Dunn. With scarcely any hope of making the Varsity, Reece has kept "plugging away," and it must be said right here that to such men as this State really owes her football prowess. Where else in all the annals of true sport can be found a finer example of spirit, loyalty and unselfishness?

To Manager Thompson and to all the players congratulations are extended for the best schedule State has ever had and for the great way in which it has been carried out. A remarkably successful season gives us courage to look forward optimistically to next year and wish success to the Varsity of 1907.

#### The State Miners.

The following is the most recent list obtainable of the positions held by the graduates of the School of Mines and Metallurgy.

##### CLASS OF 1894

H. P. Dowler, Heilwood, Indiana county, Pa., Superintendent, Penn-Mary Coal Company.

##### CLASS OF 1899

L. F. Hayes, Burke, Idaho, Mining Engineer.

##### CLASS OF 1903

G. H. Deike, Mosgrove, Pa., Superintendent, Mosgrove Coal Works.

C. S. Freeman, Tenafly, New Jersey, Assistant Engineer.

E. N. Zern, Clarksburg, West Virginia, Mining Engineer, Pitcairn Coal Company.

##### CLASS OF 1904

W. V. G. Detwiler, Gold Creek, Montana, Assistant Engineer, Chicago, Milwaukee, and St Paul Railroad.

P. G. Elder, Creighton, Pa., Creighton Coal Works.

H. F. McKnight, Munhall, Pa., with Carnegie Steel Company.

H. C. Ray, Gold Creek, Montana,

Assistant Engineer, Chicago, Milwaukee, and St. Paul Railroad.

E. A. Whitworth, Homestead, Pa., Assistant Superintendent Blast Furnace, Carnegie Steel Company.

J. E. Zullinger, Osceola Mills, Pa., Assistant Engineer, Pennsylvania Railroad.

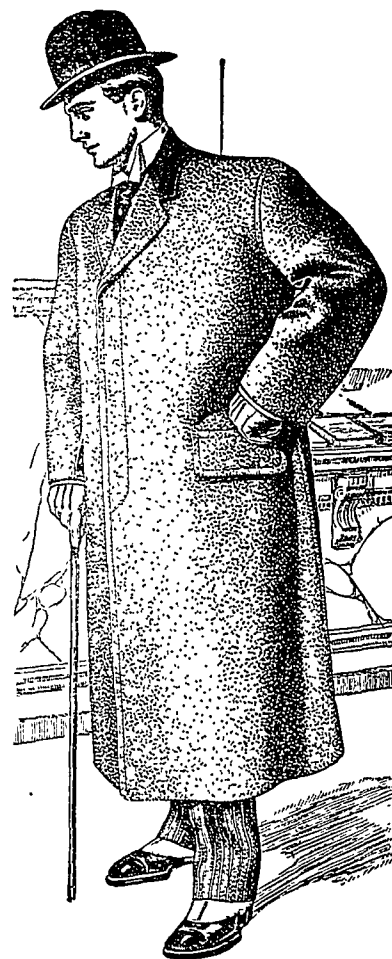
Better to have married a short girl than never to have loved a tall.

## Look at the Collar

of a Hart Schaffner & Marx Coat. Observe its clean, flat set at the neck and chest. Notice the admirable shoulder-drape. See when the coat is open, how finely it hangs. And then remember that these are lasting qualities in Hart Schaffner & Marx Clothes—they're put in to stay—sewed right into the garments. The wear of the fit is just as important as the wear of the cloth. You get both in Hart Schaffner & Marx Clothes.

The coat illustrated is a roomy coat, comfortable, stylish yet conservative, cut in three different lengths, materials of Melton, Scotch, Frieze, Vicuna and Scotch, in Black, Oxford and Herring bone patterns.

There's not an overcoat style that you've a hankering for that we can't supply.



Copyright 1906 by  
Hart Schaffner & Marx

## SIM, the Clothier

Correct Attire for Men

J. J. STOLL, Representative, 584 Main

BELLEFONTE PA