

State 6—W. U. P. O.

Continued from page 1.

warm day would have drawn twice that number. Finally Captain Yecklev stepped out across the hard frozen turf and shook hands heartily with Captain Thompson. W. U. P.'s big leader won the toss and took the west goal with water from the high river spreading on one side almost to the 20 yard mark, leaving the east goal to State's men with the chilling west gale directly in their faces.

At 2.40 "Jud" Schmidt dashed forward with every W. U. P. giant at his back and kicked off high and well to Cal Moorhead on State's 15 yard line. Cal came rushing back for 10 yards with all his teammates helping and shouting encouragement, and right then it was that "Old State's" sons showed that they were W. U. P.'s superiors. Bang went Yeck into tackle for 2 yards, George McGee ploughed through center for 8 yards, with "Mother" Dunn smiling confidently and W. U. P.'s rooters holding both hands over their hearts. It was rip, rip, rip, through W. U. P.'s beefy line until the middle of the field was reached, and then State was penalized 15 yards for holding and "Mac" was forced to punt.

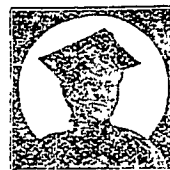
"Irish" booted the oval for 40 yards and as the ball fell in the waiting arms of A. Griggs, "Junior" Campbell was crouching grinning at his right side, and "Varsity" Barr chuckling at his left, and with one simultaneous leap, they brought the Kansan down upon the hard earth with a dull thud.

Then it was up to W. U. P. to display their vaunted offense but it failed to materialize, for, after making one first down on hard-earned plunges, Schmidt punted to State's 2 yard line, a beautiful 70 yard effort. Here W. U. P. rooters howled themselves hoarse and it was a good thing, too, as they never again got

much chance to ruin their vocal organs.

For State, McIlveen at once punted out of danger, sending the ball to State's 30 yard line, which was the closest the Pittsburg champions ever got to that mark of white-wash. Splendidly did "Old State's" men get together here and hold like adamant. Three times W. U. P.'s backs crashed into that wall of blue jerseys, with Yeck, Mac and George McGee behind it in battle array, and the grand total gain on these three attempts was 2 small yards. It was State's ball on downs! With lightning strokes the warriors of the "White and Blue" hustled the ball out of their own territory. Yeck 4, McGee 6, McGee 3, Yeck 5, Mac 4; but here another penalty of 15 yards for holding. Again Mac punted and again W. U. P. failed to get through State's stalwart line, and 15 yards was awarded State for W. U. P.'s holding. Schmidt punted 40 and Mac snapped the oval on the dead run and carried it back 39 yards on the longest run of the game.

Once more State began to bombard W. U. P.'s puffing braves. With the ball barely in W. U. P.'s territory, Gottie made 2, Mac 8, McGee 10, but on the next try Gottie fumbled on W. U. P.'s 25 yard line. W. U. P. made a first down but were then forced to kick, Cal catching the ball nicely. Again for Old State,—Gottie 4, McGee 8, Gottie 6, McGee 7, Mac 6, until finally with the ball on W. U. P.'s 18 yard mark, the Pittsburg collegians held for downs, and Schmidt punted 25 to Moorhead. But Old Penn State's fighters were not to be denied. Three times they had forced W. U. P.'s cohorts back upon their line, and for the fourth trial State's valiant sons began with more dash and spirit than ever. "Junior" Campbell with pretty interference ran the end for 5 yards, Mac by a splen-



COTRELL & LEONARD
ALBANY, N. Y.

Makers of
**CAPS, GOWNS
AND HOODS**
to the American Colleges
and Universities.

Class Contracts a Specialty.

S. W. KALIN

Hatter and Men's Furnisher

Students' Headquarters for Hats,
Neckwear, Fancy Shirts, Hosiery,
Underwear, Gloves and Sweaters

STATE COLLEGE - PA.

LEARN TELEGRAPHY and R. R. ACCOUNTING. \$50 to \$100 salary assured our graduates under bond. You don't pay us until you have a position. Largest system of telegraph schools in America. Endorsed by all railroad officials. Operators always in demand. Ladies also admitted. Write for catalogue. MORSE SCHOOL OF TELEGRAPHY, Cincinnati, O., Buffalo, N. Y., Atlanta, Ga., LaCrosse, Wis., Texarkana, Tex., San Francisco, Cal.

THE CENTRE
COUNTY BANK
BELLEFONTE

REMEMBER
The International Tailoring Co.
is represented at State by
RAINEY & MATTER
Samples always open for inspection. Measurements taken at customers' convenience.
ROOM 591 MAIN.

HARDWARE

Good Goods - Lowest Prices
Honest Inspection and Fair
Judgment is all I ask. . . .

JOHN I. OLEWINE
BELLEFONTE, PA.

TAKE HOME A
College Pipe and a Box of
Writing Paper
FOR CHRISTMAS. ORDER NOW.

STOLL
Room 242 McAllister Hall