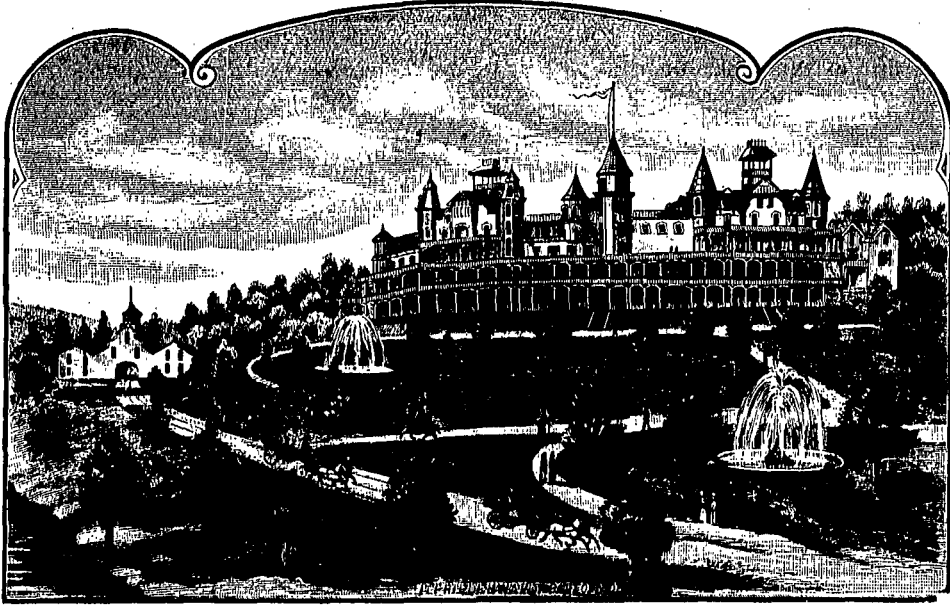


ADVERTISEMENTS.



**WALTER'S SANITARIUM,**  
**WALTER'S PARK, PENNA.**

*Wernersville, Station of Philadelphia and Reading Railroad, 18 trains daily stop at the Station, bringing us within two and one-half hours of Philadelphia, and four and one-half hours of New York.*

**Is a place where sick people recover health and well people learn how to keep well.**

WALTER'S SANITARIUM has won for itself an enviable reputation for curing invalids. Its fame is national, if not world-wide. By virtue of its inherent merits it has grown to be one of the great Sanitariums of the Country—300 feet long, 5 stories high, built by its present proprietors for its present purposes; viz: To apply

**A NEW SYSTEM OF TREATMENT.**

for both sick and well; for well that they may keep well, for the sick that they may get well. Well people seek its health-promoting appliances, and sick people soon become well by processes which keep them well.

To Preserve Health at the same time that it is being recovered, and recover health by processes which preserve it, is the desideratum—the grandest achievement of any age. To this end where would one find air and climate equal to those of this section? Where such water—such scenery, and where such restful variety and beauty as found at Walter's Park?

Our treatment employs BATHS of all kinds, Massage, Swedish movements, Electricity—all administered on principles clearly conceived and logically applied.

Circulars free—Illustrated catalogue and literature of substantial value. The Nutritive cure, 75 pages, 25c. Outlines of a Common Sense System, 25c. Recent Important Discoveries, 25c. Best Means of Preserving and Regaining Health, 25c. Philosophy of the Health Reform, 10c.

The reader will make no mistake in investigating this system, which supplies to Medicine what Newton's discovery did to Astronomy and General Science. Life's Great Law, the analogue of attraction of gravitation, has been discovered, and is here logically applied. Address for full information,

**ROBERT WALTER, M. D.,**  
**Walter's Park, Berks County, Pa.**