

RAILROAD TIME TABLE

RAILROAD TIME TABLE. ARRIVAL AND DEPARTURE OF THE WESTERN MAIN LINE. EXPRESS TRAINS. DEPARTURE. Express train, Fort Wayne and Chicago, will leave Pittsburgh at 10:30 a.m. and arrive at Chicago at 10:30 p.m. Express train, Fort Wayne and Chicago, will leave Pittsburgh at 10:30 a.m. and arrive at Chicago at 10:30 p.m.

HOTELS AND RESTAURANTS

THE AVENUE HOUSE. Next to Pennsylvania Passenger Depot. JOHN SAVAGE, Proprietor. HAVING TAKEN AND FITTED UP. With all the modern improvements, this popular resort, the proprietor is prepared to accommodate all guests in the most comfortable and convenient manner.

INSURANCE

PHILADELPHIA FIRE AND LIFE INSURANCE COMPANY. No. 149 CHESTNUT STREET. Capital, \$1,000,000. ASSETS, JULY 1, 1902. Cash and Treas. Notes, \$21,000,000. Real Estate, \$10,000,000. Bonds, \$10,000,000. Other Assets, \$10,000,000.

AN EXCELLENT FAMILY NEWSPAPER

THE PITTSBURGH SATURDAY MORNING POST. - IS A - HANDSOME AND INTERESTING MAMMOTH WEEKLY. PRINTED ON FINE WHITE PAPER. WITH CLEAR, LARGE, NEW TYPE. IT IS THE ONLY DEMOCRATIC NEWSPAPER PUBLISHED IN PITTSBURGH, AND RE-ESTABLISHED IN 1854. IT CONTAINS ALL THE CURRENT NEWS OF THE DAY, AND FURNISHES THE MOST RELIABLE PROPRIETARY, MARKET AND COMMERCIAL REPORTS UP TO THE HOUR OF GOING TO PRESS.

RAILROADS

WINTER ARRANGEMENTS. ON AND AFTER MONDAY, NOV. 17, 1892. PENNSYLVANIA CENTRAL RAILROAD. EIGHT DAILY TRAINS. THROUGH TRAINS. THROUGH TRAINS. THROUGH TRAINS. THROUGH TRAINS.

BANKING ROUTES

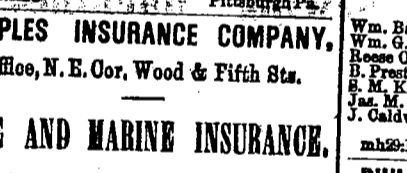
HOLLAND SAVINGS BANK. 65 FOURTH STREET. ORGANIZED IN 1855. OPEN DAILY FROM 9 O'CLOCK. FROM MAY 15 TO NOVEMBER 15, FROM 7 O'CLOCK TO 9 O'CLOCK. FROM NOVEMBER 15 TO MAY 15, FROM 9 O'CLOCK TO 11 O'CLOCK.

IRON MANUFACTURERS

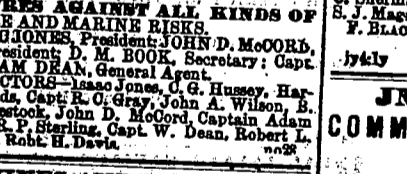
AMERICAN IRON WORKS. Jones & Laughlin. PITTSBURGH, PA. MANUFACTURERS OF STEEL. IRON AND BRASS. PIPE, SHEET PILING, AND ALL KINDS OF IRON WORK.



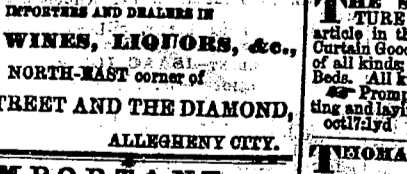
THE PATNA. Capital, \$1,500,000. ASSETS, JULY 1, 1902. Cash and Treas. Notes, \$21,000,000. Real Estate, \$10,000,000. Bonds, \$10,000,000. Other Assets, \$10,000,000.



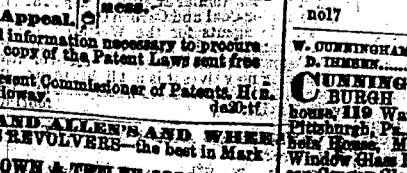
PEOPLES INSURANCE COMPANY. Office, N.E. Cor. Wood & Fifth Sts. FIRE AND MARINE INSURANCE.



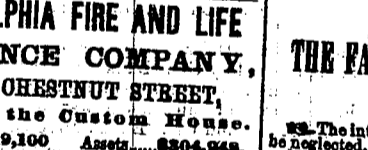
ALLEGHENY INSURANCE CO. OF PITTSBURGH. OFFICE, No. 27 FIFTH ST., BANK BLOCK.



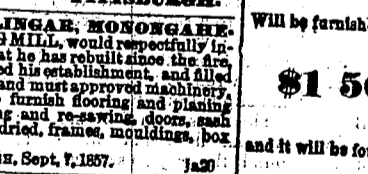
TIERNAN & GETTY. Wholesale and Retail Grocers. IMPORTERS AND DEALERS IN TEAS, WINES, LIQUORS, &c.



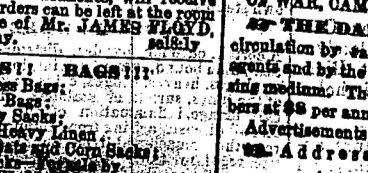
IMPORTANT INVENTORS. PATENT AGENTS. PATENT AGENTS. PATENT AGENTS.



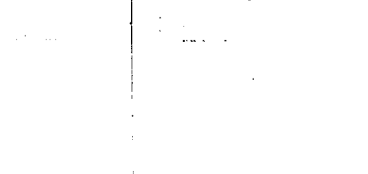
PHILADELPHIA FIRE AND LIFE INSURANCE COMPANY. No. 149 CHESTNUT STREET. Capital, \$1,000,000.



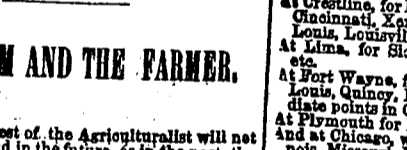
JNO. MOORHEAD, COMMISSION MERCHANT. FIG METAL AND BLOOMS. No. 14 WATER STREET, BELOW MARK.



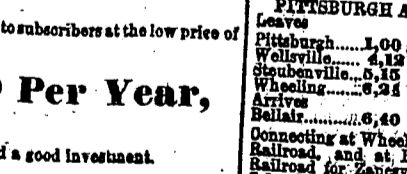
UPHOLSTERY. No. 26 FOURTH STREET. THE SUBSCRIBERS MANUFACTURING CO.



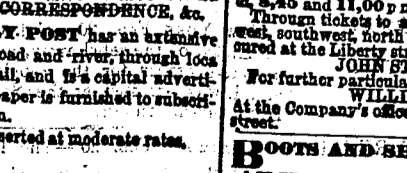
THE SATURDAY MORNING POST. Will be furnished to subscribers at the low price of \$1.50 Per Year.



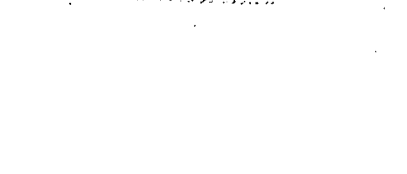
THE FARM AND THE FARMER. The interest of the Agriculturalist will be protected, and in the future, it will be the perfection of this Department.



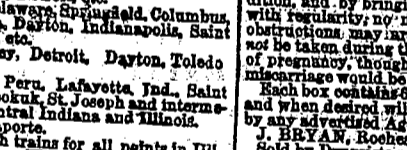
THE SATURDAY MORNING POST. Will be furnished to subscribers at the low price of \$1.50 Per Year.



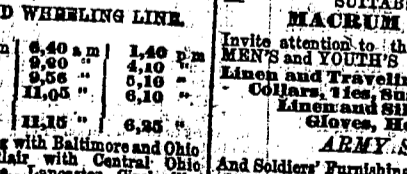
THE PITTSBURGH DAILY POST. Will be furnished to subscribers at the low price of \$1.50 Per Year.



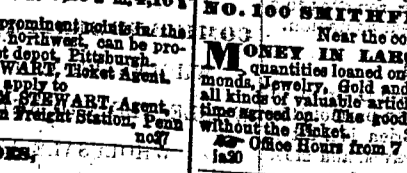
THE PITTSBURGH DAILY POST. Will be furnished to subscribers at the low price of \$1.50 Per Year.



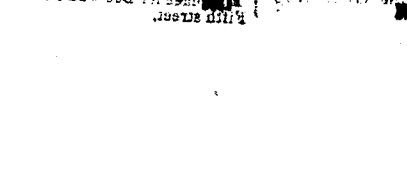
THE WAR NEWS. As a source of additional interest to all classes of readers, the progress of the present war will be closely followed, and the most important events will be promptly collected and presented to the reader.



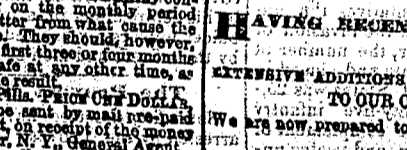
THE SATURDAY MORNING POST. Will be furnished to subscribers at the low price of \$1.50 Per Year.



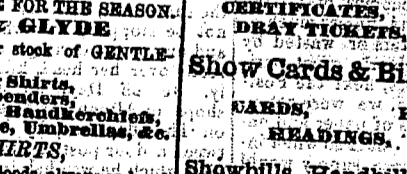
THE PITTSBURGH DAILY POST. Will be furnished to subscribers at the low price of \$1.50 Per Year.



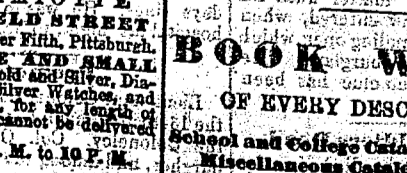
THE PITTSBURGH DAILY POST. Will be furnished to subscribers at the low price of \$1.50 Per Year.



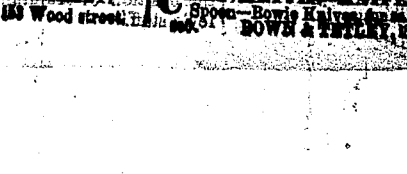
PUMBERS AND GAS FITTERS. No. 195 WOOD STREET, OPPOSITE FIRST CHURCH, PITTSBURGH.



FURNISHING GOODS. SUITABLE FOR THE SEASON. MACHON & GLYDE.



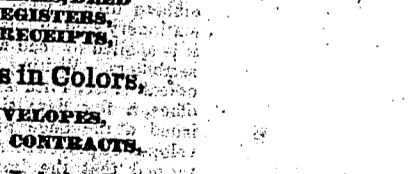
PRICES AND VIDEOS. 600 BUSHLE DRIED PEACHES. L. BARKER'S PURE CIDER VINEGAR.



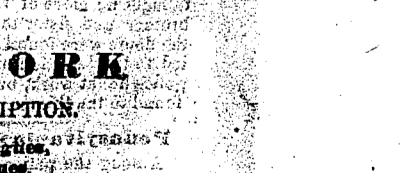
WILLIAM BAGLEY. No. 100 SMITHFIELD STREET. LOAN OFFICE.



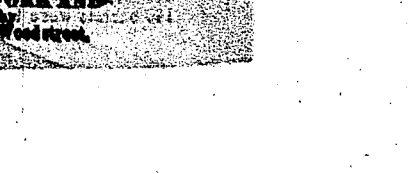
MORNING POST. STREAM PRINTING. ESTABLISHMENT. CORNER FIFTH & WOOD STREETS.



MORNING POST. STREAM PRINTING. ESTABLISHMENT. CORNER FIFTH & WOOD STREETS.



MORNING POST. STREAM PRINTING. ESTABLISHMENT. CORNER FIFTH & WOOD STREETS.



MORNING POST. STREAM PRINTING. ESTABLISHMENT. CORNER FIFTH & WOOD STREETS.