

STORE CLOSED THIS CHRISTMAS EVE AS USUAL

Bowman's

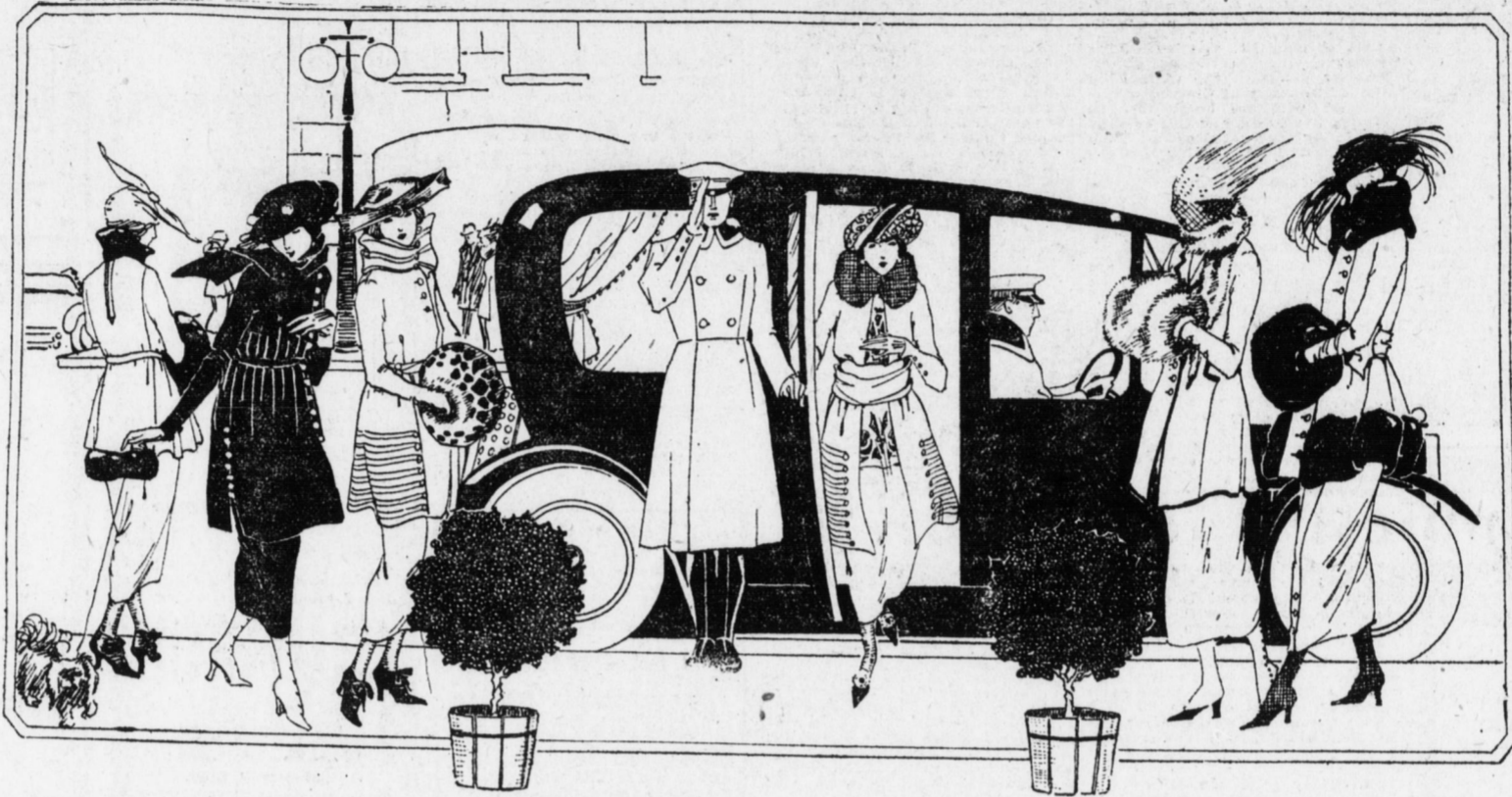
STORE CLOSED THIS CHRISTMAS EVE AS USUAL

BELL 1991—2356 UNITED

HARRISBURG, WEDNESDAY, DECEMBER 24, 1919.

FOUNDED 1878

Beginning Friday Morning
All Winter Suits at Half-Price
(Except Wool Jerseys)



This means that the entire Suit Department is open for selection of suits at one-half the usual price, with the one exception of Wool Jerseys. The Bowman label in a garment is assurance of careful selection as to style, quality of materials and dependable workmanship. No matter whether you select the plain or more elaborate models in Serge, Velour, Tweed, Silvertone, Broadcloth, Chevrons, Peachbloom, Gold Tip or any of the other materials, one-half off is indeed a remarkable value. Suits for dress, semi-dress, street or sports wear—One-Half Off Usual Price.

BOWMAN'S—Third Floor.

Choice of 200 Hats
In This Sale \$3.75

These represent nearly our entire stock of Velvet and Fur Hats. Included in this lot are Hats of brocade, silk velvets, fur and fur trimmed, gold and silver cloth.

Best choice to those who come early---\$3.75

BOWMAN'S—Third Floor.



Dresses
At Unusual Reductions

Wool Velours, Jerseys and Serges in many chic styles. Hand embroidered, braid trimmed and tailored models in navy, tan, taupe and brown. Full range of sizes; Sale Price, \$19.75.

Misses' and Ladies' Tailored and Fur-trimmed Velours, embroidered and braid trimmed serges in all the wanted street and afternoon models, navy, brown, tan, taupe and delft; sizes 16 to 44; and stouts, Sale Price, \$29.50.

Satin, Crepe de Chine, Serges and Tricotine. Many stylish models to select from; braid, button and embroidered trimmings in sizes 16 to 44. Sale Price, \$39.50.

Afternoon Frocks, in navy, taupe, brown and black Georgette, Satin, Crepe de Chine, Tricotine and Serge; newest straight line tunic models. Sizes 16 to 44 and many stouts. Sale Price, \$44.75.

All Party Dresses, One-Fourth Off.

BOWMAN'S—Third Floor.



Coats
Specially Priced For This Sale

Incomparable values in Winter Coats, including our entire selection of smart coats. The large variety of models allows a wide range from which to make a choice.

A number of serviceable models with Fur or Art Seal, trimmed or plain tailored or raglan styles; lined throughout. Reduced to \$29.50.

Street, Motor and Sports Coats, fine fur trimmed models. Silvertone, Velour, Broadcloth and Tweed. Reduced to \$45.00.

A large assortment of attractive Fur Collared Coats, smartly trimmed with Seal, Australian Opossum and Nutria; belted, semi-fitted, long lines and sport models. Reduced to \$55.00.

Fashionable Coats of Peachbloom, Tinseltone, Verona, Bolivia, handsomely trimmed with Seal, Beaver, Nutria and Australian Opossum, also some leather and tweed motor coats. Reduced to \$65.00.

Our entire line of higher priced coats greatly reduced.

BOWMAN'S—Third Floor.

Special Sale of
Blouses
Sport Coats and Sweaters

Crepe de Chine and Georgette Crepe Blouses, in flesh, white, dark suit shades. These are selected from our regular stock. Embroidered and beaded designs. A good assortment of styles in all sizes; special, \$5.00.

Smocks in Linen Crash. All white and white with colored cuffs and collars; smocking and pleats, belted styles. Special, \$2.96.

Cotton Waists for \$1.00 in white and colored Madras and Voiles tailored, lace trimmings and pleatings; \$1.00.

Crepe de Chine Waists in tailored models in white and flesh; high or low necks; tucks and lace trimmings; \$2.98.

One dozen Wool Jersey Sport Coats in green, rose and maize. Well tailored, belted and sleeveless coats. Special, \$5.39.

Wool Angora Tam-o-shanter in oxfords and dark gray for the young girls; \$3.98.

Plain Knitted Coat Sweaters in belted, full coat styles, high and low collars in rose, navy, red and white. All sizes, \$3.95



BOWMAN'S—Third Floor.

Big Reductions on All
Fur Coats

- 4 Marmot Coats; 30 inches; \$145.00.
- 1 Sealine Coat; 30 inches; \$195.00.
- 1 Sealine Coat; 36 inches; \$239.00.
- 1 Hudson Seal, 30 inches; \$285.00.
- 1 Hudson Seal; large collar and cuffs of Squirrel; \$295.00.
- 1 Best Quality Hudson Seal; shawl collar and bell shape cuff of finest squirrel, full flare model; \$450.00.
- 2 Taupe Nutria; 30-inch models; \$275.00.
- 1 Handsome Squirrel Coat; 30 inches; \$495.00.

One-Fifth Less
 On All Separate
 Scarfs, Sets and Muffs

Splendid Assortment of
Children's Furs
 At Prices That Will Interest You

BOWMAN'S—Third Floor.

Children's Coats
At One-Fourth Off

Two to Six-----Six to Fourteen

In this Clearance Sale of Children's Coats in sizes 2 to 6, you have choice of Broadcloths, Silvertones, Corduroy and Velvet. With fur collars and fur trimmings. Styles in yoke with flare bottoms, Empire, straight line and belted. Colors are Copen, tan, light blue, rose, green and brown—25% less in price.

In 6 to 14 sizes; Coats are here in Velour, Bolivia, Silvertone, Corduroy and Velvet. With fur collars and trimmings of fur for fabrics. Styles are full-backs, raglan sleeves, Empire and belted styles, 25% less in price.

All Children's
Hats at
One-Third Off

These are in Velour, Beaver and Velvet. Tailored and trimmed styles.

BOWMAN'S—Second Floor.

