

ALFRED P. DAVIES, AUTO EDITOR

AUTOMOBILE SECTION

AUTOMOBILE NEWS AND ADVERTISING



SPECIAL FEATURES EVERY SATURDAY

O. DECKMAN & SON CARLISLE, GETS SPECIAL TRUCK

Kelly-Springfield, Specially
Designed, Delivered
Yesterday

J. E. Dare, of the Atlantic Motor Truck Company, Pennsylvania distributors of the Kelly-Springfield Truck, delivered a specially-designed and built truck yesterday to the O. Deckman and Son Company, of Carlisle. This truck is a three-and-a-half-ton standard Kelly chassis equipped with a covered van six feet six inches wide by seventeen feet deep.

This body was built by the Hoover Wagon Works, of York, the largest builders of truck bodies in this section of the country. They have built many bodies for trucks under special order and this one for the Deckman Company is the largest they have ever turned out. It is made up of three sections, the cab which has a seating capacity for five men, a sleeping compartment equipped with three bunks and a storage compartment that will hold a house full of furniture. Each compartment is equipped with electric lights. The tires were built for this particular truck and are of the cushion design.

This truck is one of a fleet of five that the Deckman Company are using for hauling work in the East. It is understood that they have a large contract now to deliver the household effects of more than a hundred families from Philadelphia to Carlisle where there is a big construction contract being filled that will require the moving of these families there.

Another Kelly truck is now ordered for the Deckman Company and will be delivered in the near future.

Automobiles in North Carolina will have only one license plate for each car in 1920. The one-plate law originated in the Senate at the last session of the General Assembly, and was urged as an economic measure.

**Auto
Gloves,
Robes
and
Reversible
Leather
Coats
FORRY'S
Penn-
Harris
Building,
Open
Evenings.**



PRODUCTION COST A BIG PROBLEM

Packard Company Meets It by
Special Training For
Executives

How to solve the problem of the ever-increasing cost of production, reduce waste, and secure a closer coordination of functions between the various departments, are vital problems with automobile manufacturers at the present day. Much progress has recently been made in bringing about their solution at the plant of the Packard Motor Car Company. The medium through which the campaign was conducted to secure these ends is known as the Packard Advanced Training School, which has just closed its first 13 months of successful achievement. Since April, 1918, over 200 Packard executives have been given a special course in industrial management at the advanced training school.

The institution of the Packard Advanced Training School is a most noteworthy innovation in modern industry," is the opinion of Mr. E. E. Mead, superintendent of advanced training. "Our plan is original with us. Before outlining our own plans, I made a thorough investigation of many industrial educational systems in other establishments, and was unable to find any plan in operation that could be depended upon to meet our present-day needs for better industrial training."

"Therefore, we enrolled in the school all of our job setters, production foremen, assistant foremen, foremen and assistant superintendents. The school was divided into assemblies of approximately 30 members each. Many of the office men and graduate engineers from the University were also enrolled and thus brought into closer contact with the men from the shop. They all met in the school on a common footing, and studied in the spirit of hearty co-operation the various possible solutions, as outlined by the lecturers, to problems of shop management, which had long confronted them.

The following subjects were studied: "Outline of Course of Instruction," "Shop Discipline," "Rowan Premium System of Paying Wages," "Inspection and Scrap," "Tools," "Time Study," "Routine System," "Stock Keeping," "Production," "Care of Machinery," "Employment," "Safety and Sanitation," and "What Makes an Executive." At the fifteenth session of the school an examination was given on all the subjects covered by the lecturers.

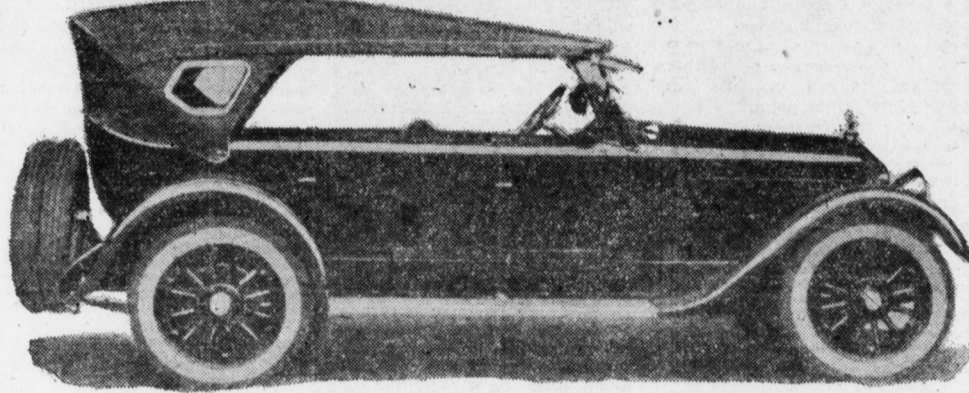
Much of the information contained in the lectures, has been put to practical use. It was found, however, that many benefits derived from the technical information would be lost unless placed in a printed form and given to the Packard executives for permanent reference.

The textbook, "Packard Advanced Training School Lectures Course," has, therefore, been published and distributed to all Packard executives.

A few copies are available for general distribution to students of industrial management and engineering.

**Atlas Electric
Service Co.
Fishman Garage
Baiter Phone 3685 Dial 6262**

THE 1920 POST-WAR PREMIER TO BE SHOWN HERE SOON



NEW PREMIER IS LAST WORD IN CAR CONSTRUCTION

Hagerling Motor Car Company to Have Demonstration Here Soon

The new postwar series Premier has made its appearance on the market and will be shown in this city immediately after the holidays by the Hagerling Motor Car Company, the local distributors. That the various Premier models are the last word in motor car construction is shown in the many and superb appointments that are a part of the regular equipment of the car. Nothing has been left to the imagination; every little detail has been worked out and the new Premier stands out as a very able rival of the foreign cars that have, up to this date, been the bane of particular car buyers.

The new Premier is the only car equipped with the Cutler-Hammer magnetic gear-shift as regular equipment. It has an all aluminum motor. The beauty and finish of the body and the interior is in keeping with the finest work produced by American body builders. There are three open-type bodies, the two, four and seven-passenger models, and two closed-type bodies of four and seven-passenger capacity.

As shown in the illustration, the cars all come fully equipped with two extra rims and two cord tires. Other features that are a part of the regular equipment include a Perfection heater, dash and reading lights, cigar lighters, fire extinguisher, fire pump, clock; in fact, everything that adds to the comfort and pleasure of touring.

Four million dollars for the construction of roads during 1920 will be available in Maine. It is expected that 150 miles of new state highway will be constructed.

As a result of demands for a more expensive automobile than is manufactured in the United States, a large plant is to be erected for the production of a British car at Springfield, Mass.



Automobile Activities
Throughout the World

Automobiles are still restricted in Bermuda. Street traffic in Buenos Aires goes to the left.

The average motor truck has a displacement of five horses. The Detroit Automobile Club has a membership of more than 7,000. American-made automobiles are exported to 31 different countries. Citizens of Cleveland, Ohio, have bought 15,000 automobiles during 1919.

Prices of the latest French passenger automobiles range from \$2,000 to \$20,000.

Automobile tourists will find the longest mile in Norway. It contains 12,152 yards.

Buses on Fifth avenue, New York City, have had a continuous service of thirteen years.

There has been an increase of 22 per cent in the sale of motor cars during the past year.

The average consumption of gasoline per automobile is from 10 to 14 barrels per annum.

The College of the City of New York has added two automobile courses to its list of studies.

England has established entirely by the labor of women.

It is estimated that there will be no less than 25,000 automobiles in North Carolina in 1920.

There were 214 passenger cars and 15 motor trucks exported to the Dutch East Indies during August, 1919.

England, France and Italy are planning to ship cars to America with prices ranging from \$10,000 to \$20,000 apiece.

In the registration for automobiles and trucks for 1919, Ohio has taken the lead from New York of 3,416 more motor vehicles operated.

During 1918 Great Britain imported 20,000 gallons of motor spirits, 70 per cent of which came from the United States.

The 6,500,000 motor cars in use in the United States by the end of 1919, have displaced no less than 30,000,000 horses.

Through the enforcement of the so-called blue laws of the State of Maryland, the sale of gasoline is forbidden on Sunday.

Of the 42,000 motor trucks made during the third quarter of 1919, there were more of the three-quarter-ton type sold than of any other kind.

The number of motor cars stolen each year in the United States is far greater than the combined output of five big manufacturing plants.

Servant girls in the exclusive residential section of St. Paul, Mo., have the use of their mistresses' automobiles "one or two" times a week.

More than 75,000 licenses have been issued this year in Cleveland, Ohio, at the branch license bureau conducted by the Cleveland Automobile Club.

A mammoth automobile garage is to be constructed at Atlanta, Ga., with capacity of 2,000 cars and containing 175,000 square feet of floor space.

The estimated cost of a Roosevelt Memorial Highway across Long Island is \$2,000,000. The proposed route will connect New York with Montauk Point.

The President of the United Businessmen's Association, of Philadelphia, is in favor of a large corps of motorcycle policemen. A resolution will be passed requesting the city to place such policemen on the streets to combat automobile thieves.

Seeing What the Battery Does at Willard Station

"A good many things of the utmost importance are constantly going on inside the box of every automobile starting and lighting battery," says Mr. Kent, local Willard Battery expert, "yet it is very seldom that any of us has an opportunity of watching these changes as they take place."

"The whole process is showing an unusual way in a demonstration given at the technical school conducted by the Willard Storage Battery Company. At this school, a number of cells are assembled in glass jars in place of the regular rubber jars and are charged and discharged under conditions which closely approximate the conditions of actual service."

"To show what happens to these cells when impure water is used, several foreign substances are dropped into the various batteries. To one nitric acid is added; into another a little sal ammoniac is dropped; a little hydrochloric acid is put in the third. All the results are carefully noted by students. In this way, the Willard service station experts who attend the school are enabled to tell at a glance not only when impure water is used in a battery, but exactly what sort of impurity is interfering with the proper work of the cell."

FRANKLIN SEDAN PRODUCTION ON THE INCREASE

One Hundred and Eighty-nine
Closed Models Made in
1914; 5,666 This Year

From a production of only 189 enclosed cars in 1914 in addition to open types to nearly 5,000 enclosed cars in 1919 is the exceptional manufacturing and sales record of the Franklin Automobile Company of Syracuse, N. Y., which for the five years up to fill the anticipated demand for this type of motor car. The schedule of the Franklin Company called for the manufacture of 5,000 enclosed cars for the year ending this month and the possibility of increasing the schedule to satisfy the increasing demand, makes it probable that the figure will be nearer the 6,000 mark.

The history of the American enclosed car is largely a history of the Franklin, which is said to have pioneered the enclosed car for utility purposes in this country.

The first Franklin enclosed car made its appearance in 1907 and was a limousine designed to fill a certain large-city demand. It was not until 1914, however, that the enclosed car business gained in volume. At that time the Franklin Company produced its first Sedan, or inside-drive enclosed car, with the certainty that as long as the enclosed type was limited to chauffeur operation it would not cut much figure in the business.

The advantages of the enclosed type for general use quickly became self-evident and the Franklin Company took advantage of the demand in developing this type.

The Franklin factory just began to swing into production in 1914 when 189 cars were built. Many obstacles were overcome and the car was not

put on the market until it tested true to the perfection already established at that time in the other Franklin models.

The enclosed car output in 1915 was 406; in 1916 it was 444; and in 1917 and 1918 it took a sharp jump to 2,465. The war prevented manufacture for a time but for the calendar year, beginning at about the date of the signing of the armistice, the enclosed car marks will reach 5,666.

Of the number produced the schedule calls for 4,466 Sedans, striking testimony to the popularity of that model. The remainder of the enclosed car business will be of the Brougham, a four-passenger enclosed type.

"When a friend of mine wrote to me and asked me why I drive a Cadillac," reads a letter from "Fatty" Arbuckle, star movie comedian, to the Cadillac Motor Car Company, Detroit, Mich., "I took my pen in hand and told him. If it makes you feel as good to know what I said as I feel when I hear that somebody enjoyed one of my pictures, I would rob you of a lot of satisfaction by keeping silent. I told my friend I drive a Cadillac because—

"I have driven every other kind of an automobile.

"I am an automobile crank and a crank always goes from one thing to another till it reaches the top.

"My home is the best place I know of to eat and I want to be sure of getting there before the meal gets cold.

"I like to think when I'm riding, and I think better when it's quiet.

"I love fine machinery and in my love affairs I always pick the best.

"I take long trips and hate blisters.

"I have been married and appreciate the novelty of having something respond readily to my guidance.

"I hate to stop at garages.

"The designers of the car didn't build the driver's seat to fit Singer's Midgets.

"Both myself and my machine enjoy the respect of the neighbors.

"It stands up when I sit down.

"Jesse James had nothing to do with building it.

"If I want to, I can always have someone to talk to, even if it's only the speed cop.

"It doesn't play me any dirty tricks.

"Those are my Fourteen Points. They need no League of Explanations."

Before securing a motor license to operate a car in Brazil a chauffeur must pass severe examinations. The applicant must undergo road trials, resistor fingerprints and photograph, and license number which is recorded by the police authorities.

SCORED CYLINDERS REPAIRED
(By Lawrence Proctor)
NO NEW PISTONS REQUIRED
METAL WELDING
Of All Kinds—Aluminum a Specialty
NO JOB TOO BAD THAT
WE CAN NOT REPAIR
MACHINE WORK
OF ALL KINDS
Harrisburg Welding and
Brazing Co.
96-98 S. Cameron St. Both Phones

USL BATTERY SERVICE STATION
If your lights are dim or the starter hasn't just the "pep" it should have, let us look over your battery.
BATTERY SERVICE CORP.
Central Penna. Distributors
208 N. Second St.
Bell 4885 Harrisburg Dial 2452

BRISCOE SETS NEW GAS RECORD

Fifty-one Miles on One Gallon
of Gas; Highest on
Record

Beating its own record in the Yosemite economy run, some months ago, a stock model Briscoe touring car has just set up a gasoline mileage mark regarded as little short of phenomenal by those who witnessed the performance.

The Briscoe averaged 28.8 miles on a gallon of five horses in the Yosemite run, and this mark was overtaken by 32.4 miles in a test run last week at Pomona, Cal., with the automobile department representatives of four Los Angeles newspapers as witnesses.

The Briscoe traveled 51.2 miles on a single gallon of gasoline, a performance such as has never been approached anywhere in the world before, according to all available records concerning stock model four cylinder cars.

The Briscoe's mileage test was arranged on the day of the attempt to establish a new record, Manager Earl V. Abbott and Charles Rider, accompanied by the four Los Angeles newspaper men, made the trip from this city to Pomona to act as witnesses and to check against the Briscoe's performance.

M. W. Zandler, who piloted the Briscoe to victory in the Yosemite economy run, was at the wheel again on this occasion.

The newspaper representatives who watched the Briscoe set up its remarkable record of 51.2 miles on a single gallon of gasoline, were Jack Waters, of the Express; Fred Ross, of the Times; Otto Mathies, of the Examiner, and Nelson Lally, of the Herald.

The Briscoe was equipped with oversize Miller 31x4-inch cord tires. In the presence of the newspaper representatives Zandler disconnected the gas line from the Briscoe tank, he then drained the carburetor.

Next he obtained a certified gallon measure of gasoline and he transferred its contents to the special tank which was connected to the carburetor after the gas line from the regular tank had been uncoupled. The top was lowered, but the wind shield remained in place. The passenger load was 650 pounds. The observers followed the test car in another machine.

Eighty-seven different makes of passenger cars and 70 of motor trucks are produced in the United States.

Private chauffeurs in New York City are demanding higher wages and shorter working hours. The petition for a minimum wage of \$40 a week, a 10-hour working day and two hours off for lunch and recreation, \$1 an hour for overtime, free uniforms and one day and night off a week.

France is making systematic plans to attract the automobile tourists. Under a new order all the villages in the country are to have their names shown in eight-inch letters and the municipal offices. National roads will have red-painted mile-stones, while the old-fashioned signposts are to be replaced by blue enamel plates, with the direction of the next town and its distance displayed in big white letters, so as to be easily read from the passing car.

TEXACO
REG. U.S. PAT. OFF.

**TEXACO
GASOLINE
AND
MOTOR OIL**

INDEPENDENT OIL CO. MOUNTAIN VIEW, PA.
DISTRIBUTOR
TEXACO
PETROLEUM PRODUCTS
IF YOUR DEALER CANNOT SUPPLY WRITE TO US GIVING YOUR DEALER'S NAME
CLARENCE SCHOCK, Proprietor

New Triplex Springs Radical In Design Wonderful In Comfort

OVERLAND 4 Sedan records a great step forward in motor car design. Even on the roughest roads the new three-point suspension Triplex Springs ward off the shock of road bumps. Attached diagonally at each end of the car, they protect car mechanism and passengers from the usual jolts and jars. They permit long springbase with its easy riding and short wheelbase with its easy handling. They thus make possible light weight with resulting great economy. You can have no idea of the comfort, satisfaction and convenience a light sedan can give until you ride in Overland 4.

The Four-Door Sedan complete in every detail weighs only 200 pounds more than Touring Car

THE OVERLAND-HARRISBURG CO.
212-214 North Second Street

YORK BRANCH: 15-150 West Main St. Open Evenings Bell 4370
NEWPORT BRANCH: Opposite P. R. Station
"Prices Subject to Change Without Notice"

8,000 Miles Guarantee

UNITED TIRES

A Tread That Cannot Part From the Fabric

Pull with all your might—travel over the roughest of roads—the tread remains firm to the fabric because the fabric and tread are permanently vulcanized together by live steam. The salesman at the United Store will gladly tell you of other mileage-making features.

Stores and Service Stations the Country Over.

United Tire & Rubber Corporation

231 No. 2nd St
HARRISBURG
Phone 2486

8,000 Miles Guarantee