

Shop Early And Early In The Day

**Bowman's**

Shop Early And Early In The Day

BELL 1991-2356 UNITED

HARRISBURG, WEDNESDAY, DECEMBER 17, 1919.

FOUNDED 1878

**SHOP EARLY**



Yes, shop early, and bring the children along when possible. You know how anxious they are to see the pretty things in the store, and especially the Toy Department in basement. And, of course, they must tell Santa their wishes. You will find Santa's Castle on Second Floor, Front.

**Children's Coats**

In Broadcloth, Velour, Silvertone and Chinchilla. Two to six years of age, in colors of tan, light blue, rose, Copenhagen, green and brown. Yoke models, plain tailored and flare backs; fur and fur fabric trimmed, \$10.50, \$11.95, \$13.50, \$16.50, \$18.50 to \$35.00.

Girls' Coats of Velours, Silvertone, Bolivia, Velvet and Chinchilla in gray, blue, Burgundy, beaver and reindeer, trimmed with plush, fur and fur fabric; 6 to 14 years; \$10.95, \$11.50, \$12.50, \$14.50 to \$47.50.

BOWMAN'S—Second Floor.

**Slippers or Pumps**

An acceptable and appropriate gift for women and girls who will welcome new evening footwear for holiday dances and parties. The most attractive of the new styles are here at prices ranging from \$8.50 to \$14.00.

**Buckles**

Beautiful designs in rhinestone, cut steel and beaded; \$3.00 to \$12.00.

**Pumps**

Black Satin Pumps; \$8.50.  
Black Kidskin; \$9.00.  
Patent Coltskin; \$8.50 to \$14.00.  
Silver Cloth; \$9.00 and \$14.00.  
All with hand turned soles and Louis XV heels.

**Gift Slippers**

Women's Slippers; \$1.25 and \$6.00.  
Men's Slippers; \$2.00 to \$3.50.  
Children's Slippers; \$1.65 to \$2.75.

BOWMAN'S—Main Floor.

**Bath Mats**

\$1.75, \$2.00 to \$3.00 Each

Bath Mats make useful and desirable gifts. We have them in pink, blue, lavender and Oriental colors in very attractive designs; \$1.75, \$2.00, \$2.50, \$2.75 and \$3.00 each.

BOWMAN'S—Second Floor.



**Good Assortment of Blouses**

Specially Priced at \$4.95

Included in this lot are the Georgette Crepe in white, flesh and bisque, also dark flowered effects; Crepe de Chine in flesh and white daintily trimmed in embroidery, some with tucks and braiding. Blouses that usually sell for a great deal more, but there is no reason why we should not give you the advantage of these right when you appreciate the values most as gifts. Very special at \$4.95.

Warm Wool Scarfs in all lengths and widths with fringe finish. All shades of heather, buff, browns and oxfords.

with black draw string at waist line and elbow in buff, blue, rose and black \$7.95.

Also one lot of Serge Middies of the regulation style in navy serge, with white braid trimming; women's and misses' sizes; \$4.95.

Ripple Sweater for gifts at \$7.95.  
Flaring sleeves, round collarless neck

BOWMAN'S—Third Floor.

It's a Delight For a Man to Visit This Store---



---With a Wife Who Shops Early and Never at Night

**Silk Garters**

You, no doubt, are now doing your last bit of Christmas shopping, but have you made your selection of fancy garters, yet? Do not fail to give them consideration, for they are beautiful. They make a handsome gift, and one which every young girl would be glad to receive; \$1.39 to \$4.25.

BOWMAN'S—Main Floor.

**Domestic Cooker**  
Domestic Science Fireless Cookers are useful, practical and economical. Sold on the Bowman Club plan. One dollar delivers one to your home.  
BOWMAN'S—Fifth Floor.

**Our Holiday Special in**

**Silk Stockings**

We are featuring a fine quality thread silk; medium weight, full fashioned. Tops of flexible lisle and lisle feet. A good assortment of colors; black, white, navy, cordovan and gray; "Holiday Special," \$2.49 pair.

BOWMAN'S—Main Floor.

**A Gift For Mother  
a Hair Switch**

Mother surely would be happy if she were to receive one for a gift. Bowman's hair shop is known for its dependable merchandise, also shades that will match the oddest texture, including gray,

\$3.00

BOWMAN'S—Third Floor.

**A Napanee Kitchenet  
For Christmas**

There are various sizes and styles awaiting your inspection. One Dollar delivers one to your home; Bowman's Club Plan takes care of the balance.

BOWMAN'S—Fifth Floor.

**Sale of All**

**Fur Scarfs and Muffs**

At 20% Off Regular Prices

and Choice of All

**Fur Coats at 10% Off**

Children's Furs at Prices That Will Interest You.

BOWMAN'S—Third Floor.

**Velvets**

**and Velveteens**

Velvets are very much in demand this season. Our color line is still complete and offers good selection.

35-inch Velutina, "The Velvet of Velvets," 12 colors, also black; \$4.95 yard.

44-inch English Velveteen in black; \$5.50 yard.

27-inch Velutina Cords for suits; 8 colors and black; \$3.00 yard.

36-inch Chiffon Velvets; brown, taupe and black; \$6.75 yard.

40-inch All-Silk Duvelyn; \$12.50 yard.

50-inch Silk Plush; \$12.50 yard.

BOWMAN'S—Main Floor.

**Framed Pictures**

Great variety of subjects and sizes with gilt, mahogany, walnut and mission finish frames; 25c, 50c, 50c to \$6.00.

BOWMAN'S—Fourth Floor.

**Carpet Sweepers**

make an ideal gift. Bissel's Sweepers; \$4.25 to \$6.50.

Torrington Sweepers; \$4.25 to \$6.00.

Bissel's Vacuum; \$9.00 to \$13.00.

Torrington Vacuum; \$7.00 to \$9.75.

Torrington Electric Cleaners; \$49.75.

BOWMAN'S—Fourth Floor.

**Vacuum Electric Washers**

Let us show you the operation of this machine. It washes the clothes perfectly clean without injury to the most delicate fabrics. No dragging, rubbing or jerking over cleated or corrugated surfaces.

BOWMAN'S—Fifth Floor.



**The Famous Van Raalte**

**Chemises and Bloomers**

In Georgette, Crepe de Chine and Satin

Dainty undermuslin that appeals to every woman who appreciates the unusual in fine workmanship and quality of material.

Envelope Chemise in Crepe de Chine, Georgette and Satin, plain tailored and prettily trimmed with tucks, Val. lace and organdie insets, flowered and double face ribbon effects. Plain tailored as well as the more elaborate models. Colors are flesh, beige, orchid, peach and sky blue. Very specially priced at \$7.98 and \$9.98.

Satin Bloomers, reinforced and cut very full. Trimmed with three rows of hemstitching and blue flowered ribbon, colors are orchid and flesh. Very special at \$7.98.

BOWMAN'S—Second Floor.

**Blankets For Christmas**

Cotton Bed Blankets in single and double bed size in white, gray, tans and plaids; \$2.75, \$3.39, \$3.89, \$4.00, \$4.25 and \$5.00 pair.

Woolnap Blankets; warm and fleecy in gray, white and plaids; \$4.98, \$5.00, \$6.25 and \$6.75 pair.

Part Wool Blankets in white with blue and pink borders; some ribbon bound; \$9.50, \$10.00, \$11.98 to \$15.00 pair.

All Wool Blankets in a large selection of patterns in grays, plaids and different shades; also white with colored borders; \$14.00 to \$27.50 pair.

**Baby and Crib Blankets**

In making our selection we did not forget the children. We have a large selection in single and double blankets in cotton, part wool and all wool.

Single Blankets in pink and blue, floral and animal designs. Each in a box; \$1.19, \$1.69 and \$2.19 each.

Double Crib Blankets in white; assorted colored borders; each in a box; \$2.00, \$2.25, \$2.50, \$2.75 to \$4.98 pair.

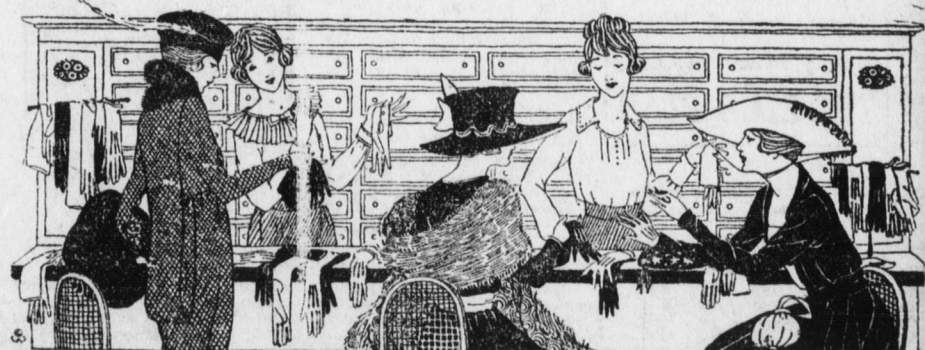
BOWMAN'S—Second Floor.

**Sleeping Garments**

of the Soft Fleecy Kind For Children

These make very practical and useful gifts. We are showing an exceptional value in well made sleeping garments at 95c, \$1.15 and \$1.49.

BOWMAN'S—Main Floor.



**Special Sale of French Kid**

Gloves at \$2.55

Mostly all the famous Centemeri Gloves, known to every woman who knows what is best in kid gloves. The Centemeri Gloves are among the finest made and this store has built up the largest glove department in this section of the State largely through featuring the Centemeri brand.

This particular lot of gloves were purchased months ago and this special price is practically as low as these gloves would cost wholesale today.

First quality skins. White, tan, brown, mastic and gray. Two-clasp, five-row embroidered and Paris point backs. Overseam stitching and perfect fitting. Where else can you find the equal at \$2.55 pair?

BOWMAN'S—Main Floor.