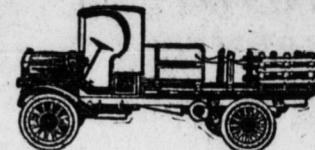


ALFRED P. DAVIES, AUTO EDITOR

AUTOMOBILE SECTION

AUTOMOBILE NEWS AND ADVERTISING



SPECIAL FEATURES EVERY SATURDAY

JORDAN URGES ACCEPTANCE OF OPEN CARS NOW

Spring Deliveries to Be Retarded by Big Demand

Edward S. Jordan, president of the Jordan Motor Car Company, urges Jordan dealers to safe-guard their spring business by taking now all Jordan cars they can get from the factory. Mr. Jordan sends this message from England where he went to attend the Olympia Motor Show and visit the principal foreign motor car factories.

"We are now producing 500 cars a month," says Mr. Jordan in his message to dealers, "with orders from dealers for immediate delivery of ten months production at this rate. There is every indication that the demand will increase steadily throughout the winter.

"The closed car situation from the standpoint of deliveries is most discouraging. No one can begin to produce enough closed cars to meet more than a fraction of the demand. No one could possibly have anticipated such a demand. Even if it could have been anticipated, producers of plate glass for wind-shields, top lights, and closed car windows would be unable to supply sufficient glass for months to come. Furthermore, the production of closed car hardware is far too limited to satisfy the demand. Besides all this, the number of body manufacturers is very

Auto Gloves, Robes and Reversible Leather Coats FERRY'S Penn. Harris Building. Open Evenings.



small considering the demand, their facilities are limited and they cannot secure enough men qualified to build high-grade closed bodies.

"It will be impossible for any factory to include closed models in their shipment of open cars. Any dealer who shows any inclination to hold up shipments of open cars for closed cars will have to pay the penalty in the spring through the shortage of open cars when he most needs them. We therefore urge all distributors or dealers to safeguard their spring business by preparing for it as we have prepared for it by notifying all of our suppliers that we are ready to take any quantity of material they can ship at any time.

"There is already a shortage of one million cars. There will be a short period during the winter when every dealer cannot sell every car he can get for immediate delivery. But deliveries this year will be so widely distributed and production so far short of demand that no dealer or distributor can accumulate any quantity of cars.

"There are 30,000 dealers in the United States. If each dealer secured only one car for storage, the factories would have to produce a surplus of 30,000 cars to meet the present demand. That is entirely out of the question.

"I expect to see the demand for cars increase after the New York show the first week of January, and see it pass beyond all possibilities of production following the Chicago show.

"We realize that we cannot give our dealers all the cars they want but we plan to have our cars widely enough distributed so that each dealer will have an opportunity to share the success which will certainly come within the next six months."

Wood wheels are seldom found on the latest European cars. They have been replaced by the steel spoke, the steel disc or the wire wheel. All these wheels are of the detachable type with clincher rims. Last year in only 21 cities of the country, more than 7000 automobiles valued at more than \$28,000,000, were stolen. About 5000 of these automobiles valued at about \$5,000,000, never were recovered.

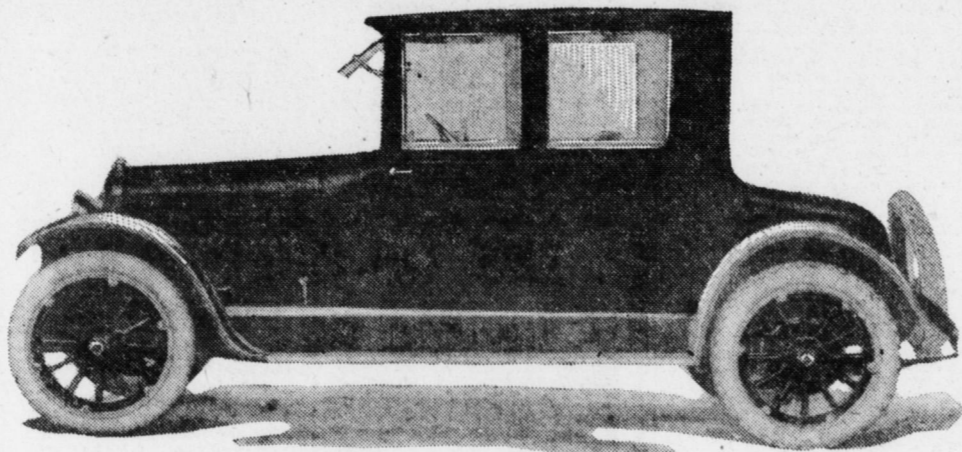
A record-breaking run of an automobile was recently made from Pittsburgh to Detroit. The 376 miles of distance was made in 12 hours, which time practically equalled that of express train service for the same trip.

Hundreds of passenger cars leave New York city each day and travel into the country districts, where the farmers have erected stands for the cost of fresh vegetables for city housewives.

The "slow strike" in British motor factories has been a chief element of delay, the output per man being less than half that of 1914 and less than one-third that of the war period.

License numbers for passenger cars in the State of Pennsylvania amount to nearly 450,000.

The New Nash Four-Passenger Six Coupe



THE MOTOR TRUCK

I am the Motor Truck—of damaged highways, Ruts and holes, the cursed beginning. Yet hear my self defense—I claim I'm far more sinned against than sinning.

I plod neglected, time worn roads; Until my parts all ache with strain; I haul freight cheaper, quicker, better,— I slave; I sweat;—all for the Nation's gain.

I am a public servant—patient, Dudging utility of trade. Yet they stunt me rather than To build good roads to give me aid.

My railroad brother once outgrew His rails by hauling increased freight; He wasn't held down to the rails— They built the rails to hold his weight.

Unbar the gates that hold me back If you would have me haul your loads. I'll do my part if you'll do yours— Just give me more and better roads.

—P. L. SNIFFIN, International (Mack) Motor Co.

NEW NASH COUPE IS SHOWN HERE

Four-Passenger Six, the Latest Word in Nash Models

The new Nash coupe is here. The latestness of its coming, due to tardiness in production has in no way allayed the many luxuriant and comfortable appointments of its interior nor the beauty of its exterior body. It is the last word in Nash models and in keeping with the fineness of former Nash cars. There is ample seating capacity for four people. The motor is of the latest improved six cylinder type, valve-in-head and with the spark plugs entering the head of the motor.

The new model is now on display at the salesrooms of the Myers' Motor Sales Company, local Nash distributors, 1210 Penn street, near Broad.

Mr. Myers in speaking of the coupe, says: "In the construction of the Nash six four-passenger coupe no detail that might provide for comfort or convenience has been overlooked. The seats are wide and comfortable and their arrangement makes it easy for a passenger to enter or leave the car under all conditions. Permanent seats are provided for three with the driver's seat a little forward of the others. This arrangement, while leaving the driver's seat close enough to the rest of the passenger to enable him to carry on a conversation with no inconvenience, gives him more than ordinary room and allows him unusual freedom of movement.

"Windows in the Nash Six coupe are adjustable by the turning of a nickel-plated handle. Adjustment may be made to any position of the window. The plate glass windows are securely fitted have no interstices through which the wind or rain can penetrate, shutting out the elements.

"Because the door supports are built permanently into the car there is no body vibration or rattle at any speed.

"Illumination is provided by two sunken lights at either side in the rear of the car.

"It is upholstered in beautiful taupe colored mohair. The cushions are wide apart, and deep, and the seats have the comfortable resiliency of springs which add so much to the joys of motoring and rob it of fatigue."

The MOTOR DIGEST



Automobile Activities Throughout the World

The State of Kentucky has 90,190 automobiles.

Canada has one motor car to each 50 persons.

The production of the first four-cylinder car was in 1900.

San Francisco and Los Angeles are now linked by a paved highway of 82 miles.

The Automobile Workers of the World is a new labor organization in Detroit, Mich.

Kansas City, Mo., now has 30 motor express routes to the surrounding rural districts.

Mexico City and suburbs that comprise the Federal District of Mexico have 5493 automobiles.

Kansas City was the first place to establish an automobile service with the so-called jitney bus.

The Allied countries of Europe have less than one-half as many vehicles as the United States.

The War Department has sent 35,993 surplus motor vehicles to France since the signing of the armistice.

It is estimated that 50,000,000 tons are hauled by motor trucks in the United States every 24 hours.

The average automobile owner drives no less than 4000 miles a year, and buys a new model every third year.

The United States exported 750 motor cars to India during the month of July, which were valued at \$632,645.

With the return of European farmers to pre-war conditions the farm tractor sales in Europe are increasing.

Since its organization in 1892, the Highway Commission of Massachusetts has expended over \$35,000,000 upon highways.

The Lincoln Highway is to have a continuous paved road from the Hudson River to the Mississippi by the end of 1920.

With a population of 18,000 inhabitants, Reykjavik, Iceland, has several hundred motor cars, nearly all of American manufacture.

The contract for automobile license plates for next year in the State of North Carolina calls for a total of 135,000 plates.

CHANDLER USES AIRPLANE TO SECURE PARTS

Chicago to Cleveland by Airplane to Speed Up Production

"Express companies and the mail service proving inadequate to get parts from Chicago to the Chandler Motor Car Company, in Cleveland, the factory, determined to keep up production, is now employing airplanes to deliver parts," declares Andrew Redmond, local Chandler distributor.

"Production troubles in Chicago, where sockets and plugs for Chandler headlamps are made, caused a serious shortage recently of these small but very necessary articles. Things looked bad at first, but finally almost normal production was resumed, and everything would have been fine—except for the need of fast transportation service between Chicago and Cleveland."

"Efforts to get these parts through speedily enough to catch up with production were to no avail. Regular special delivery mail, railway express and even baggage were not adequate because the sockets and plugs weren't being made fast enough to permit big shipments at sufficient frequent intervals.

"Some other method of transportation had to be found. And it was. For now these parts are coming through by airplane special delivery mail, and this shortage has now been practically overcome.

"There is nothing particularly startling about all this, perhaps, except that it illustrates vividly the determination with which manufacturers in the automobile industry have been working throughout the year to overcome production difficulties. No effort and no reasonable expense have been spared.

"And yet the average motorist, not being able to get his new car when he wants it, finds difficulty in appreciating the strenuous times that manufacturers have gone through, really serious troubles, too, and we are

Every Mysterious Box Isn't a Bomb

When New York financiers receive mysterious packages these days and no letter of explanation accompanies them, the bomb squad is invited to open the box.

Early in December the wife of a New York banker received an express shipment carefully packed in burlap and wood. It was the shape of a large suitcase. She waited for a letter to explain the package, but when none came she notified the Police Commissioner.

The investigators arrived and worked with fine-tooth saws, augers and a flashlight, and after a thorough interior inspection to expose any wires and mechanism the snip was pressed and the open box showed a folding camp table, a Christmas present from her brother.

"This uneasiness could have been prevented by proper shipping instructions, said J. N. Bomgardner, of the Atlas Electric Service Company, the local Prest-O-Lite service station, "and you can be sure all our storage batteries delivered for Christmas will have proper shipping explanations."

"We believe a word of precaution about understanding the care of batteries will do much to prolong the life of this electric heart of automation—and believe, like the bomb squad, we understand the mysterious battery box which starts and lights cars.

"A monthly inspection, for instance, prevents destruction through neglect, and this is a very regular essential and a hydrometer test given in time if your battery is under or over charged.

"The storage battery will in the future have a service so reliable that, like telephones or house for granted, and that will put an end to aggravating stills and dangers from falling lights."

Two hundred and sixteen types of passenger automobiles and trucks were represented in the 15,000 machine purchased by the War Department during the recent emergency. The cars ranged from the small roadster of about a half a ton to the 10-ton portable crane.

The Automobile Ambulance Unit, S. S. U. No. 646, was recently decorated with the Croix de Guerre and the Medal Militaire and Four agers. It was the first time in history of the French army that a unit of this kind has been given such high honors. The unit was originally known as the Formation Harles, and was the first American motor unit to participate in the world war.

Garage dealers in Clinton, Ill., have installed a nickel-in-the-slot device for supplying air and water to motor vehicles. For five cents a driver may obtain enough air to inflate his tires and enough water to fill his radiator.

The latest production of motors in England is a passenger car rated at 100-horsepower at 2800 revolutions. To handle this power four forward speed gear sets are employed.

AUTO TIRE DISTRIBUTORS

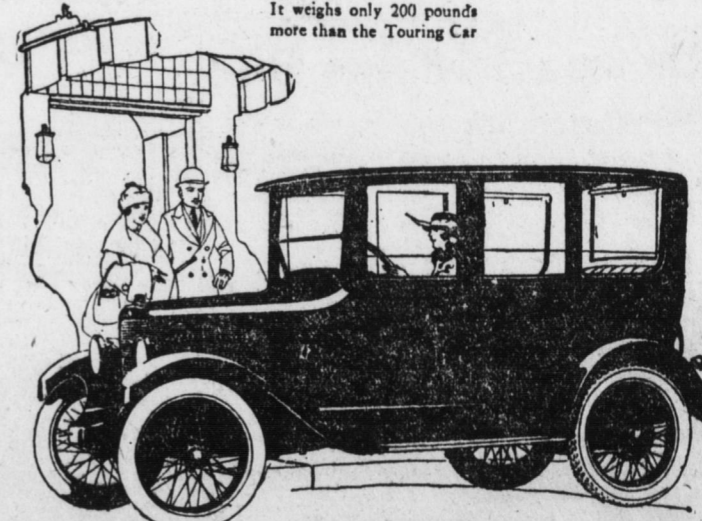
WE WILL FINANCE UP TO \$10,000—\$25,000 A DISTRIBUTOR FOR OUR SUPERIOR TIME-TESTED, POPULAR-PRICED "SPEEDWAY" AUTO TIRES. CORDS, 8,000 MILES; FABRIC, 6,000 MILES GUARANTEED MILEAGE; ALSO ABSOLUTELY GUARANTEED AGAINST RIM CUTS, STONE BRUISES, AND PREMATURE BLOWOUTS. TERRITORY DISTRIBUTOR MUST FURNISH \$5,000—\$10,000 CASH BOND. THIS IS AN UNUSUAL OPPORTUNITY. MAKE APPOINTMENT WITH W. J. WORDEN, SALES MANAGER, NATIONAL RUBBER PRODUCTS CORPORATION, 660 NORTH BROAD STREET, PHILADELPHIA, PENN.



Try These Wonderful New Springs Yourself

THOUSANDS have been absolutely astonished by the remarkable riding qualities of the three-point suspension, Triplex Springs. The universal enthusiasm of owners explains the tremendous demand for the new Overland 4. The Four-Door Sedan has the additional distinction of exceptional coach details.

It weighs only 200 pounds more than the Touring Car



THE OVERLAND-HARRISBURG CO.

212-214 North Second Street

YORK BRANCH: 128-130 West Market St. Open Evenings Bell 4370
NEWPORT BRANCH: Opposite P. R. R. Station
"Prices Subject to Change Without Notice"

Dauphin Tire Service Company

announces that it is now prepared to give

"COMPLETE TIRE SERVICE"

at its new home

211-213 NORTH SECOND STREET

Every detail in the care and preservation of your tires has been provided for in the most convenient and complete manner

VULCANIZING RETREADING REPAIRING

done with the latest and most efficient type of machinery and by the most skilled workmen

OFFICIAL GOODYEAR TRUCK TIRE STATION

Solids and Giant Pneumatics

Also a complete line of Goodyear Pleasure Car Tires

We are distributors of

BRUNSWICK
TIRES AND TUBES

PEERLESS
LIFTERS
The World's
Greatest Jack



TIRES

Warner, More-Lite,
Dillon, Macbeth,
Violet Ray Lens

RAYDEX
The Honeycomb Metalens

Gasoline, Oils,
Tires, Tubes,
Tire Accessories

"COMPLETE TIRE SERVICE"

Free Air

Drive In