

STORE CLOSSES
SATURDAY AT SIX

Bowman's

STORE CLOSSES
SATURDAY AT SIX

BELL 1991-2356 UNITED

HARRISBURG, FRIDAY, NOVEMBER 21, 1919.

FOUNDED 1874

Thanksgiving & Holiday Fashions & Furnishings

Women's Hosiery

Items For Fall & Winter

Women's Black Cotton Stockings, fleece lined; good quality; 50c pair.
Women's Cotton Stockings of combed Maco yarn; a durable stocking of superior quality; 50c pair.
Women's Fine Quality Cashmere Stockings, in black and white; \$1.25 and \$1.50 pair.
Women's Full Fashioned Pure Thread Stockings with mercerized lisle tops and lisle feet; black, white and colors; \$1.75 pair.

BOWMAN'S—Main Floor

Piece Goods Special

For Saturday

27-inch Velutina Corduroy; line of best suiting colors; also black; \$2.69 yard.
36-inch Fancy Corduroy in three shades; Brown, Green, Black backgrounds with figures; \$1.69 yard.
36-inch Moire and Satin Striped Fancy Silks, satin stripes; 36 inches wide; \$3.15 yard.
36-inch Brocade Silk Linings; big range of colorings and designs; \$1.95 yard.
32 and 36-inch English Madras; also 100 square cloth; big assortment; 59c yard.
36-inch Printed Silk Tussah; plaids and figures; deep rich tones; 85c yard.
54-inch Fur Cloth; New Lynx and Bear Skin; 4 distinct shades; \$3.65 yard.
54-inch Silvertone Velours, coatings or suiting weight; complete range of colorings; \$5.25 yard.
50 and 54-inch Fancy Suitings and Skirtings; generous assortment to select from; \$2.95 yard.
48-inch Navy Tricotine; \$4.50 yard.
54-inch Cheviot Serge in Navy or Black; a good substantial weight; \$3.50 yard.
40-inch Satin Faced Henrietta; \$2.95 yard.
40-inch Silk and Wool Bengaline; line of colors; \$2.95 yard.

BOWMAN'S—Main Floor.

Women's Underwear

Athena Union Suits of fine ribbed cotton, fleece lined. This is a union suit tailored to fit the body; \$2.00 and \$2.50. Athena underwear can only be had at Bowman's.

Women's Fine Quality Vests and Pants; fine ribbed, fleece lined; vests high neck, long sleeves. Vest and Pants; \$1.00 garment.

BOWMAN'S—Main Floor.



Cut Glass for The Thanksgiving Table

Our display of fine cut glass far excels any of our previous efforts. The line consists of a much larger variety of pieces than ever before, and the prices, considering the quality, are exceedingly moderate.

Fruit Bowl; 8 inch size; rose cutting; \$3.50.
Oval Orange Bowl; 11 inches; deep cut; \$4.25.
Celery Tray, oblong shape; rich cutting; \$5.75.
Deep Celery Tray; pin wheel cutting; \$6.00.
Water Set with 3 quart jug and 6 tumblers to match; \$10.50.
8-inch Flower Vase; artistic shape and cutting; \$3.75.
10-inch Flower Vase; artistic shape and cutting; \$4.98.
12-inch Flower Vase; artistic shape and cutting; \$8.98.
5-inch Nappy or Bon Bon Dish; \$2.00.
9-inch Fruit Bowl; very rich design; \$7.50.
Flower Basket; light cutting; \$2.50.
Fruit Bowl on revolving stand; \$10.00.
Punch Bowl on revolving stand; \$22.50.
Sugars and Creams; deep cutting; \$5.00.

Stone Vinegar or Cider Jug; 1, 2, 3 and 5 gallon capacity, 30c gallon.

BOWMAN'S—Basement.



Coats Lot One

Special \$39.50

Forty Coats in wool velour and silvertone. Most of these are silk lined models, having large fur collars; Saturday only; \$39.50.

Coats Lot Two

Special \$79.50

Twenty-five Coats in Peachbloom, Crystal and Silvertone; beautifully tailored or fur trimmed models, also the very stylish short plush models. Special for Saturday; \$79.50.



50 Dresses Special at \$21.50

Special, 50 dresses in serges, tricotines, wool velours, satins, crepe de chine and velvet. Styles include the much asked for straight line models, others bloused or with the short or long tunics; colors are navy, black, plum and taupe; sizes, 16 to 40; Saturday only, \$21.50.

BOWMAN'S—Third Floor.

Beautiful Millinery

Special at \$8.50, \$10 and \$12

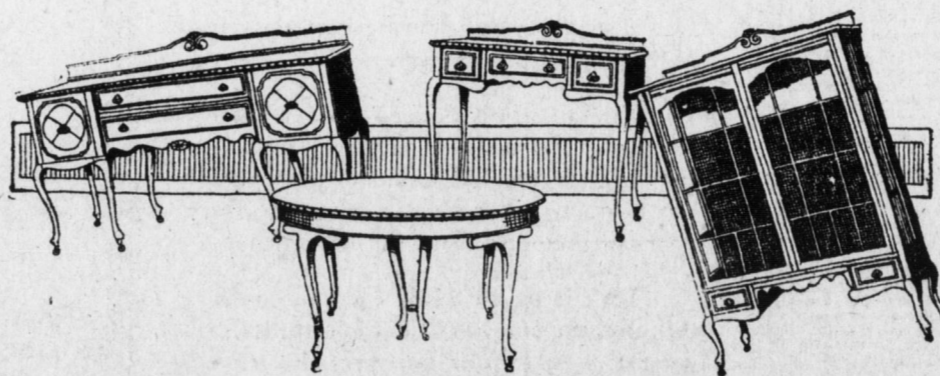
That no two are alike of these beautiful hats at so low a price is indeed unusual. Women of discrimination, who purchase hats with thrift, will indeed find here the correct hat at a price which is an added inducement.

Smart turbans, sailors, chin chins, and off-the-face. Styles developed in velvets, duvetyns, brocades, beaver, moline and silver and gold cloth, trimmed with monkey fur, ribbons, gold and silver tinsel and novelty ornaments in blacks and all the newest colors.

BOWMAN'S—Third Floor.



Thanksgiving in the Dining Room



Of course you'll want to get the most out of your dining room on Thanksgiving Day. In its present state does it meet completely with your dreams of what a dining room should be?

To get the most out of it means putting the most into it by way of thought and planning. A talk with our expert home furnishers will give you the benefit of their wide knowledge and experience.

Furniture that will stand living with, simple though artistic in design, dignified and serviceable—this is the style of dining room furniture we can furnish to you at advantageous savings.

Queen Anne Dining Suite; antique mahogany. A very attractive suite of nine pieces; blue leather on chairs; \$326.00.

Fumed Oak Dining Suite of nine pieces; buffet, china closet, oblong extension table, saddle wood seat dining chairs; complete suite of nine pieces; \$129.00.

Antique Mahogany Tea Wagon, removable glass tray; \$15.00.

American Walnut Tea Wagon; Queen Anne period; \$24.95.

Colonial Quartered Oak Buffet; 54 inches long; plank top, mirror back; \$69.00.

Quartered Oak Buffet, Colonial design; a large well made buffet with plank top and mirror; \$52.00.

A few separate and odd China Closets from our best period dining suites at special low prices.

American Walnut China Closet; \$39.00.

American Walnut China Closet; Wm. and Mary period; \$45.00.

American Walnut China Closet; Queen Anne period; \$36.00.

Antique Mahogany China Closet; Wm. and Mary period; \$49.00.

BOWMAN'S—Fifth Floor, for Fine Furniture.

Where are the Flannelettes?

A common question in every household these nights. Especially does this apply to the children as we certainly give them first consideration in cold weather. Our assortment of flannelette sleeping garments is very complete.

Children's Flannelette Sleeping Garments, blue and white; pink and white stripes; buttoned down back and front with pocket and drop seat; \$1.00, \$1.25 and \$1.50.

Children's Flannelette Gowns, in plain white and pink and white, blue and white stripes; double yoke back and front; with and without collar, finished with colored braid; 2 to 14 years; \$1.25, \$1.50, \$1.65, \$1.75.

Children's Two-piece Flannelette Pajamas, in blue and white; pink and white striped with pockets; some trimmed with frogs; 2 to 14 years; \$1.25 and \$1.50.

Boys' Flannelette Night Shirts; pink and white; blue and white striped with and without collar and pocket; 85c, \$1.00, \$1.25 and \$1.50.

BOWMAN'S—Second Floor.



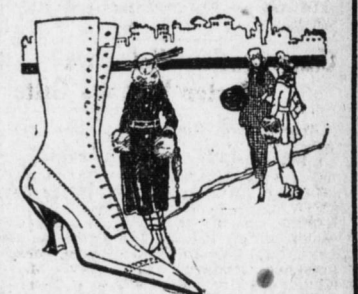
Women's Shoes at Sale Prices

If we were to quote comparative prices, it would seem an extraordinary opportunity, but price comparisons would not give you any idea of the quality there is in them. Many shoes look alike, but let us show you the difference, then you will appreciate what Bowman shoes mean at this price.

Black Kidskin Lace \$8.95
Tan Calfskin Lace
Patent Coltskin Lace
Gray Kid Lace
Gray Kid Lace with Buckskin Top
Black Kidskin Lace
Patent Coltskin Button \$9.95
Patent Coltskin Lace
Gun Metal Lace
Tan Calfskin Lace

We advise early selection. No C. O. D's. No Approvals. No Returns.

BOWMAN'S—Main Floor.



Army and Navy Blankets at \$7.98 Each

These are the same kind of blankets used by the Government in the Army and Navy. We purchased them from a manufacturer who had a surplus stock that the Government did not take, after the signing of the armistice. All perfect goods in light gray with blue borders and navy blue with black borders. Just the kind of a blanket for home, schools, institutions, and camping.

BOWMAN'S—Second Floor.

Sale of Georgette Blouses, \$4.35

A complete showing of dainty shades and suit shades; all the new collar effects, also collarless. Best quality georgette at a price far below the wholesale price at present; good assortment of sizes; \$4.35.

Novelty colored Waists in an assortment of shades with pique collars and cuffs; Peter Pan collars, dotted effects in contrasting colors; \$2.25, \$2.75 and \$2.95.

Middies in the regulation styles, all white with black bow tie. Special, \$1.98.

Flannelette Waists, tailored, high or low neck, in good shade of gray; \$1.95.

BOWMAN'S—Third Floor.

See Toyland

More wonderful this year than ever before. The Toy Department is the center of interest for the children in our Christmas Store. Most anything that the young folks can wish for is here, and, what is more, mostly "All American Makes." Bring the kiddies in and let them spend a few happy hours roaming through Toyland in the basement. It will be among the happiest hours of their little lives.

BOWMAN'S—Basement.