

NEWS OF STEELTON

Former Pastor to Speak at Grace Church Rally

The Rev. H. D. Kreidler, St. Paul's United Evangelical Church, Reading, will be the speaker at the Rally Day services of Grace United Evangelical Sunday school on Sunday.

METHODISTS TO HEAR OF CENTENARY EXPOSITION

The Rev. H. R. Bender of the Ridge Avenue Methodist Church, Harrisburg, will be the speaker in the First Methodist Church on Sunday morning.

CENTENARY SUNDAY SCHOOL TO HOLD RALLY DAY SUNDAY

Sunday will be observed as Rally Day in the United Brethren Sunday school. A special program will be given at 9.45 A. M.

OYSTERS! Fresh shipment arrived to-day. Can supply you at any time.

SUFFERED WITH ITCHY PIMPLES

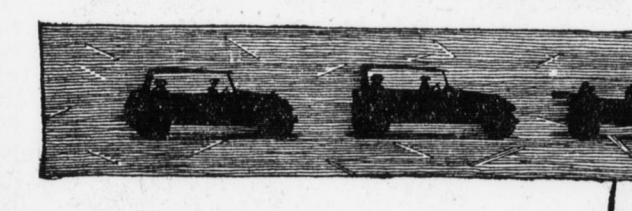
Hard and Large, Itched and Burned. Face Disfigured. Cuticura Heals.

"For five months I suffered with bleeding and itchy pimples. The pimples were hard and large and they festered. They were scattered and they itched and burned and my face was disfigured.

SPECIAL SALE Gold Medal High Grade Paint

(See Analysis on Each Can) 200 Gallons; 8 popular shades; while they last, per gallon \$3.50 a quart 95c Roof Paint, red, made to government specifications, per gallon \$2.25

We Have the Tire to End Your Tire Troubles



It's the MASON CORD—and just about as near 100% right as any tire can be. It will surely cut your mileage costs and tire worries to a wonderful degree.

The MASON Cord has magnificent mileage records—up to 32,000 miles—and on top of all you have a real GUARANTEE—read this:

Satisfaction—No Mileage Limit

MASON TIRES are guaranteed perfect tires during their entire life with no limitation placed on the time or length of service during which Mason responsibility remains in effect.

Come in and get the MASON Guarantee booklet.

OUR BUSINESS IS BASED ON SATISFACTION TO OUR PATRONS New York Cut-Rate Tire Co. 1737 North Third St. Open Evenings Dial Phone 6261 Corner Keller St. Branch Store at Harrisburg Storage Battery Co. Fourth and Chestnut Sts.

HORNER NAMED AS DIRECTOR

Dauphin County Man Selected to Be Permanent Head of Compensation Bureau

Organization of the State Bureau of Compensation, a branch of the State Department of Labor and Industry has been completed under the terms of the act of 1919, providing for reorganization by appointment of the following by Commissioner C. B. Connelly:

William H. Horner, Oberlin, Dauphin county, director, a position he has been filling in a temporary capacity for some time, at a salary of \$4,000 a year.

Joseph B. Means, Brookville, Jefferson county, chief clerk of exemptions and insurance division, at \$2,000.

Melvin G. Lehman, York, York county, chief clerk of the division of accident reports, at \$3,000.

William S. MacIntyre, Carlisle, Cumberland county, chief clerk of the division of agreements and receipts, at \$2,500.

All of these men have been filling the places. Mr. Horner took up work in the Compensation Bureau when he left the industrial statistics division. He is widely known in the county, having been Republican county chairman for years and has given considerable study to compensation matters.

Joint hearing was held to-day before representatives of the Interstate Commerce and the State Public Service Commissions on a claim of the Central Iron and Steel Company, of Harrisburg, for \$50,000 damages from the Pennsylvania and Reading railroads for certain switching arrangements at the plant in South Harrisburg.

At 12.01 a. m. to-night, railroad employes in Harrisburg and vicinity will start a nation-wide, no-accident drive, to end October 31, at midnight.

At 12.01 a. m. to-night, railroad employes in Harrisburg and vicinity will start a nation-wide, no-accident drive, to end October 31, at midnight.

At 12.01 a. m. to-night, railroad employes in Harrisburg and vicinity will start a nation-wide, no-accident drive, to end October 31, at midnight.

At 12.01 a. m. to-night, railroad employes in Harrisburg and vicinity will start a nation-wide, no-accident drive, to end October 31, at midnight.

At 12.01 a. m. to-night, railroad employes in Harrisburg and vicinity will start a nation-wide, no-accident drive, to end October 31, at midnight.

At 12.01 a. m. to-night, railroad employes in Harrisburg and vicinity will start a nation-wide, no-accident drive, to end October 31, at midnight.

At 12.01 a. m. to-night, railroad employes in Harrisburg and vicinity will start a nation-wide, no-accident drive, to end October 31, at midnight.

At 12.01 a. m. to-night, railroad employes in Harrisburg and vicinity will start a nation-wide, no-accident drive, to end October 31, at midnight.

At 12.01 a. m. to-night, railroad employes in Harrisburg and vicinity will start a nation-wide, no-accident drive, to end October 31, at midnight.

At 12.01 a. m. to-night, railroad employes in Harrisburg and vicinity will start a nation-wide, no-accident drive, to end October 31, at midnight.

INTERESTING RAILROAD NEWS

COAL CONSERVATION SHOWS GOOD RESULTS ON PENNSY RECORDS FOR TWO WEEKS

Coal conservation activity is still in evidence on the Philadelphia division of the Pennsylvania Railroad. The following report was issued today for the office of William Elmer, superintendent of the Philadelphia division:

Table with columns: Engine No., Train, Cars, Shovelfuls of Coal, Pounds of Coal Used, Pounds per Car Mile, From, To.

SAFETY FIRST IS FOR EVERYBODY

Nation-wide Drive Starts To-night; Public to Co-operate With Railroad

At 12.01 a. m. to-night, railroad employes in Harrisburg and vicinity will start a nation-wide, no-accident drive, to end October 31, at midnight.

At 12.01 a. m. to-night, railroad employes in Harrisburg and vicinity will start a nation-wide, no-accident drive, to end October 31, at midnight.

At 12.01 a. m. to-night, railroad employes in Harrisburg and vicinity will start a nation-wide, no-accident drive, to end October 31, at midnight.

At 12.01 a. m. to-night, railroad employes in Harrisburg and vicinity will start a nation-wide, no-accident drive, to end October 31, at midnight.

At 12.01 a. m. to-night, railroad employes in Harrisburg and vicinity will start a nation-wide, no-accident drive, to end October 31, at midnight.

At 12.01 a. m. to-night, railroad employes in Harrisburg and vicinity will start a nation-wide, no-accident drive, to end October 31, at midnight.

At 12.01 a. m. to-night, railroad employes in Harrisburg and vicinity will start a nation-wide, no-accident drive, to end October 31, at midnight.

At 12.01 a. m. to-night, railroad employes in Harrisburg and vicinity will start a nation-wide, no-accident drive, to end October 31, at midnight.

At 12.01 a. m. to-night, railroad employes in Harrisburg and vicinity will start a nation-wide, no-accident drive, to end October 31, at midnight.

At 12.01 a. m. to-night, railroad employes in Harrisburg and vicinity will start a nation-wide, no-accident drive, to end October 31, at midnight.

At 12.01 a. m. to-night, railroad employes in Harrisburg and vicinity will start a nation-wide, no-accident drive, to end October 31, at midnight.

At 12.01 a. m. to-night, railroad employes in Harrisburg and vicinity will start a nation-wide, no-accident drive, to end October 31, at midnight.

At 12.01 a. m. to-night, railroad employes in Harrisburg and vicinity will start a nation-wide, no-accident drive, to end October 31, at midnight.

At 12.01 a. m. to-night, railroad employes in Harrisburg and vicinity will start a nation-wide, no-accident drive, to end October 31, at midnight.

WM. C. COPLEY DIES AT ALTOONA

Was Trainmaster Eleven Years For Pennsy; Had Good Record

William C. Copley, for eleven years trainmaster on the Middle Division of the Pennsylvania Railroad, died early yesterday morning at his home in Altoona. He had been ill for some time.

Mr. Copley was born in Altoona, September 9, 1863, the son of John A. and Elizabeth (Irwin) Copley. His education in the public schools and on July 6, 1889, entered the employ of the Pennsylvania Railroad Company as a freight brakeman.

November 15, 1882, promoted to freight conductor; June 1, 1891, transferred as freight fireman; April 1, 1885, assigned to duty as freight conductor on the Hollidaysburg and Petersburg branches; Dec. 4, 1893, transferred to the Altoona yard as freight conductor; March 8, 1897, promoted to assistant yard master in Altoona yard; December 10, 1898, made assistant general yardmaster; November 15, 1903, promoted to assistant trainmaster, in charge of the Altoona yard; April 1, 1904, made freight trainmaster of the Middle Division.

Made Special Agent He was in this capacity until February 1, 1918, when he was made special agent. The veteran railroad man was best known through his service in the position of trainmaster of the Middle Division, which position he held for 11 years.

He was married in 1884 to Miss Annie Patterson, of Williamsburg, the couple making their home in Altoona. The last three winter seasons have been spent by the family in New Mexico and other parts of the Southwest in the hope of benefiting Mr. Copley's health, but he had slowly declined, and for the past month had been in a serious condition.

He was a member of the First Presbyterian Church for many years. He was also a member of Altoona Lodge of the Benevolent Protective Order of Elks. Surviving are his wife and the following children: Mrs. W. A. Nelson, of Juniata, Mrs. J. W. Spangler, of Drexel Hill, James, of Philadelphia, Richard, William, Joseph and Margery at home. Three sisters also survive, Mrs. Clara Irwin and Misses Ada and Corrine Copley, all of this city.

Lebanon Branch Plans Big Safety First Drive

Lebanon, Pa., Oct. 17.—The employes of the Lebanon branch of the Pennsylvania Railroad are fully alive to the benefits that will be derived by their families, relatives and friends through the safety first campaign which is to open in this city and throughout the United States to-night at midnight, was illustrated this morning when the employes decided to inaugurate the local movement with a parade. All employes who can possibly be spared from office, trains, yards, roundhouses and repair shops will turn out for the big pageant and they have gone even one better than that. The employes will themselves stand the expense of engaging the Perse Band to lead the procession. The parade will be held this evening as a strictly local affair, to demonstrate that the Pennsy workers themselves recognize the value of the movement to the public.

"William Scott, popularly known to his fellow employes as plain "Scotty" who is in charge of the general preparations for the campaign, has in the meantime interested preachers and many others in the dangers of trespassing on the railroads, and particularly of grade crossings accidents, and as a result of his endeavors, Father Henry, rector of St. Mary's Catholic

ENOLA SIDE Philadelphia Division.—The 225 crew to go first after 1.45 o'clock: 219, 228, 242, 232, 215, 201, 237, 248, 248, 214, 212, 224, 208, 249, 239, 205, 210, 211, 248 and 265.

ENOLA SIDE Philadelphia Division.—The 225 crew to go first after 1.45 o'clock: 219, 228, 242, 232, 215, 201, 237, 248, 248, 214, 212, 224, 208, 249, 239, 205, 210, 211, 248 and 265.

ENOLA SIDE Philadelphia Division.—The 225 crew to go first after 1.45 o'clock: 219, 228, 242, 232, 215, 201, 237, 248, 248, 214, 212, 224, 208, 249, 239, 205, 210, 211, 248 and 265.

ENOLA SIDE Philadelphia Division.—The 225 crew to go first after 1.45 o'clock: 219, 228, 242, 232, 215, 201, 237, 248, 248, 214, 212, 224, 208, 249, 239, 205, 210, 211, 248 and 265.

ENOLA SIDE Philadelphia Division.—The 225 crew to go first after 1.45 o'clock: 219, 228, 242, 232, 215, 201, 237, 248, 248, 214, 212, 224, 208, 249, 239, 205, 210, 211, 248 and 265.

ENOLA SIDE Philadelphia Division.—The 225 crew to go first after 1.45 o'clock: 219, 228, 242, 232, 215, 201, 237, 248, 248, 214, 212, 224, 208, 249, 239, 205, 210, 211, 248 and 265.

ENOLA SIDE Philadelphia Division.—The 225 crew to go first after 1.45 o'clock: 219, 228, 242, 232, 215, 201, 237, 248, 248, 214, 212, 224, 208, 249, 239, 205, 210, 211, 248 and 265.

ENOLA SIDE Philadelphia Division.—The 225 crew to go first after 1.45 o'clock: 219, 228, 242, 232, 215, 201, 237, 248, 248, 214, 212, 224, 208, 249, 239, 205, 210, 211, 248 and 265.

ENOLA SIDE Philadelphia Division.—The 225 crew to go first after 1.45 o'clock: 219, 228, 242, 232, 215, 201, 237, 248, 248, 214, 212, 224, 208, 249, 239, 205, 210, 211, 248 and 265.

ENOLA SIDE Philadelphia Division.—The 225 crew to go first after 1.45 o'clock: 219, 228, 242, 232, 215, 201, 237, 248, 248, 214, 212, 224, 208, 249, 239, 205, 210, 211, 248 and 265.

ENOLA SIDE Philadelphia Division.—The 225 crew to go first after 1.45 o'clock: 219, 228, 242, 232, 215, 201, 237, 248, 248, 214, 212, 224, 208, 249, 239, 205, 210, 211, 248 and 265.

ENOLA SIDE Philadelphia Division.—The 225 crew to go first after 1.45 o'clock: 219, 228, 242, 232, 215, 201, 237, 248, 248, 214, 212, 224, 208, 249, 239, 205, 210, 211, 248 and 265.

ENOLA SIDE Philadelphia Division.—The 225 crew to go first after 1.45 o'clock: 219, 228, 242, 232, 215, 201, 237, 248, 248, 214, 212, 224, 208, 249, 239, 205, 210, 211, 248 and 265.

Church, preached to his parishioners on the subject last Sunday, and other clergymen are going to do likewise on the coming Sunday.

Plan Big Sunday Meeting at Railroad Association

An added feature to the religious program at the P. R. R. Y. M. C. A. will be a meeting open to the public Sunday afternoon. These meetings have been quite popular and one result of the special week of prayer has been for the purpose of interesting the people in these Sunday afternoon meetings. Starting at 3.30 there will be an interesting program at the local "Y."

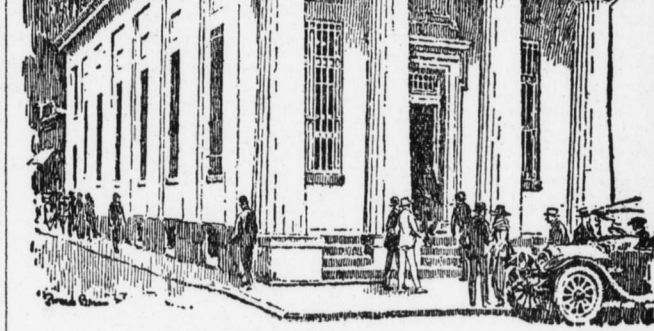
The meeting last night was in charge of H. W. Hoover, yardmaster, and was largely attended. An enthusiastic meeting was held for the boys in the afternoon. Speakers were George Rose, yardman, and A. G. Murray, president of the association. There were 43 boys present at the meeting held in the gymnasium.

This evening there will be a meeting for women employes of the Pennsylvania railroad, and for women workers from all local industries. An interesting program of singing is promised. For to-morrow night there will be a meeting at the home of George W. Pressley, 627 Schuykill street. On Sunday evening the Gospel Crew will have charge of the meeting at Sixth Street United Brethren Church.

RAISES BIG BEET Liverpool, Pa., Oct. 17.—Mrs. Thomas E. Werick claims to be the champion beet raiser in this section. She raised a red beet this season weighing 6 pounds and 14 ounces.

TO DRESS FOR IT The Boss—All we have for you is a job as night watchman. How soon can you come to work at it? Mr. Thompson—Just as soon as I can go home and get my pajamas.—Boston Globe.

To Help Make Strong, Keen Red-Blooded Americans



The Foundation of Your Prosperity

YOU cannot expect to prosper unless you lay a foundation for your prosperity.

Begin your foundation with a savings account at this 87-year-old institution. Then every dollar saved and deposited here to draw interest is a stone piled upon a stone in the structure of your progress.

Start your "success fund" here and now.

Dauphin Deposit Trust Company

MEMBER FEDERAL RESERVE SYSTEM Harrisburg, Pa.

SHOES SPECIALLY PRICED FOR SATURDAY

Come to this big Shoe Store and your problem to buy good, serviceable footwear at the lowest possible prices, will be solved. Shoes for the entire family at a saving of from \$1.00 to \$3.00 a pair.

Table with columns: Women's smart Dress Lace Boots, Women's Tan Kid Lace Shoes, Women's high-cut, 9-inch Lace Boots, Women's Black Kid Lace Shoes.

\$5.00 BOYS' SHOES \$3.79 Boys' black or Tan lace Shoes, English last. Special, \$3.79

Children's Tan Lace or Button Shoes, sizes 8 1/2 to 11, \$2.95

Children's Tan Scuffee Shoes, button or lace; solid oak soles, \$2.65

Little Gents' Black or Tan Lace Shoes, all solid leather, \$2.95

Little Gents' School Shoes, in black, lace or button; \$3.00 value. Special \$1.98

FACTORY OUTLET SHOE CO.

16 NORTH FOURTH STREET

Entertain in Celebration of Son's 20th Birthday

Mr. and Mrs. W. D. Bowers, 1947 North Seventh street, entertained last evening celebrating the twentieth birthday anniversary of their son, John Bowers.

The guests were Mr. and Mrs. W. D. Bowers, Miss Gertrude Bowers, Miss Cindy Roberts, Miss Mary Witter, Miss Gertrude Gilbert, Mrs. E. A. Alexander, the Misses Grace and Ester Alexandria, Mrs. Dice, Ida S. Hoover, Charles Erisman, Russell Reiner, Harry Smith, James Doyle, Henry Bowers and John Bowers.

Class Surprises Teacher on Birthday Anniversary

Members of Class No. 1 of the Memorial Lutheran Sunday School surprised their teacher, Louis K. Bringer, on his birthday last evening at his home, 146 Sylvan Terrace. A delightful musical program was given and games were enjoyed. Refreshments were served to the following:

Mr. and Mrs. Bringer, and son, Elftwood Bringer, Mrs. William Hoover, Mrs. John Rodgers, Mrs. Fred Steekley, Mrs. Russell Ney, Mrs. T. Shull Patterson, Mrs. E. Edward Clark, Mrs. Harry Heiges, Mrs. Arthur Wagner, Mrs. Edward Page, Mrs. Jack Hoffman, Mrs. William Ebersole, Mrs. Harry Searfoss, Mrs. George Deeter, Mrs. E. L. Egolf, Mrs. Harry Platt, Miss Sara Davis and Miss Lydia Gillchrist.

ATTENDING DANCE

Miss Esther Loban, 622 Munich street, is spending the weekend at Gettysburg, where she will attend a Gettysburg dance and the Gettysburg-Urbinus football game.