

STORE CLOSES SATURDAYS AT SIX

Bowman's

STORE CLOSES SATURDAYS AT SIX

WELL 1001-2356 UNITED

HARRISBURG, TUESDAY, SEPTEMBER 30, 1919.

FOUNDED 1871

Wool Dress Goods

Our stocks are continually added to with the latest and newest weaves. We have just received two beautiful shades of Flufftex, viz: Doe-skin and Reindeer. It is 56 inches wide, soft as down, light as a cashmere, yet it combines warmth and comfort, plus style satisfaction. \$9.50 yard.

56-inch Kitten's Ear Kersey is another cloth of merit. It has the finish of a satin with wavy surface. A weighty rich and dressy suiting; in black; \$6.95 yard.

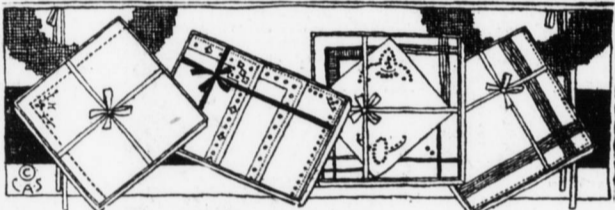
54-inch Tricotines, in Navy and black. A quality that leaves nothing better to desire and the height of fashion; \$6.50 yard.

Other grades of above mentioned; \$4.85 and \$5.50 yard.

54-inch Heather Jerseys, in 8 Scotch mixtures. These are truly the most satisfying dress materials of the season; \$4.50 yard.

56-inch Scotch Tweeds in those ever stylish and wear-giving mixtures that withstand all weathers. Two weights of this suiting; \$3.95 yard. Coating, \$4.95 yard.

BOWMAN'S—Main Floor.



Special Sale of 450 Ladies' Handkerchiefs

Choice 12 1/2c Each

These handkerchiefs are in white self and fancy colors. A salesman's sample lot, which we were very fortunate in obtaining. Last year we had a similar sale of handkerchiefs, and all who bought were exceedingly well pleased with them. Excellent for Christmas gifts. Choice at 12 1/2c each.

Another Lot of Handkerchiefs

439 in all.

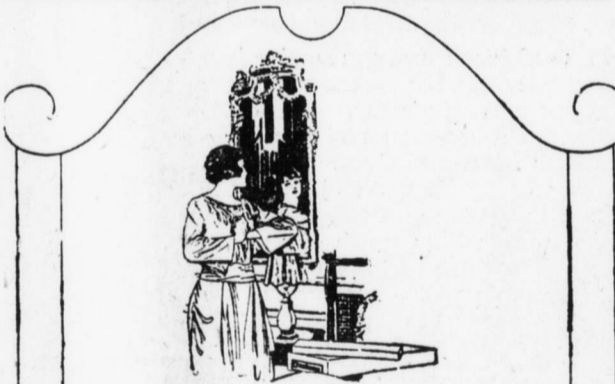
These consist of pure linen, hand embroidered, fancy colors; Irish Shamrock and lawn, with rolled edges. Choice, 25c each.

BOWMAN'S—Main Floor.

Black and White Full Fashioned Silk Stockings \$1.29

Women's three-quarter boot silk stockings with soft elastic lisle tops and reinforced lisle feet, full fashioned in black and white; \$1.29 pr.

BOWMAN'S—Main Floor.



ATHENA UNDERWEAR FOR WOMEN AND CHILDREN

The form-fitting qualities of ATHENA, its beautiful fabrics and dainty, durable trimmings are a delight to the woman of discriminating taste.

The lines of ATHENA underwear conform to the figure.

Note the striking contrast between ATHENA and ordinary underwear as shown in illustrations of Women's underwear.



ATHENA Underwear



Ordinary Underwear

Bowman's—Second Floor.



Special Sale of Bowman's Soap For Hard Water

\$1.00 a Dozen Cakes

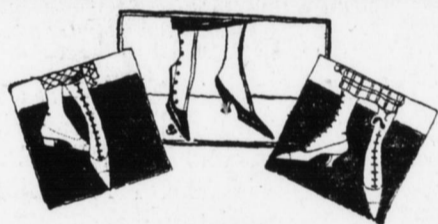
The soap made from this same formula has been famous for over twenty years in the Philadelphia leading department stores. We have the exclusive rights from the same manufacturer to sell this soap in Harrisburg under the name of "Bowman's Soap for Hard Water."

This soap is made principally from coconut oil and beef tallow—the clean, sweet and pure kind, of the highest grade. Not a trace of grease in the whole composition. In fact, you could eat the tallow or coconut oil with the same ease of mind as you would the fat that simmers out of your beefsteak.

Other ingredients that are exclusive to this formula make the soap ideal for shaving, shampooing, or any toilet purpose where a pure soap is required.

Usually, it takes a dozen cakes of soap per person for a year. At this price—\$1 a dozen cakes, it is advisable to lay in a year's supply, as we sell it regularly at 12 1/2 cents per cake.

BOWMAN'S—Main Floor.



Real Style and Extra Value

If you are looking for a smart, distinctive boot for present dressy wear, we suggest our new models in Patent Coltskin lace with black kid top and all black kidskin lace; \$13.00

Brown Kidskin lace; \$13.50.

All with hand turned soles and Louis XV heels. The long lines of this model have a charming slenderizing effect and the fit is perfect.

BOWMAN'S—Main Floor.

Toilet Articles An Essential Factor

Considerable care should be used in selecting perfumery as it is a very essential factor in adding the finishing touches to Milady's toilette and this is the season of the year when one's toilet requirements need replenishing for the coming out-door days. Just a little kindly attention and the effects of the biting wind are quickly effaced. Just a little forgetfulness and chapped lips and rough skin are the penalty.

Here are the necessities of both before and after and our Toilet Goods Department is now ready for your inspection and our efficient sales ladies will gladly help you to select your needs. We have a full assortment of Domestic and Imported Perfumes, such as Cotey, Houbigant, Violet, Richard Hudnut, Melba, Elmo, Harriet Hubbard Ayers, Wm. Brown and many others. Also a complete line of cold cream, face powder, toilet waters, rouge, compact powders, etc.

BOWMAN'S—Main Floor.

Colonial Drapery Fabrics

Our beautiful counter book, showing illustrations of many different types of rooms, furnished with Colonial Drapery Fabrics, will suggest ideas for using these artistic materials in beautifying your home.

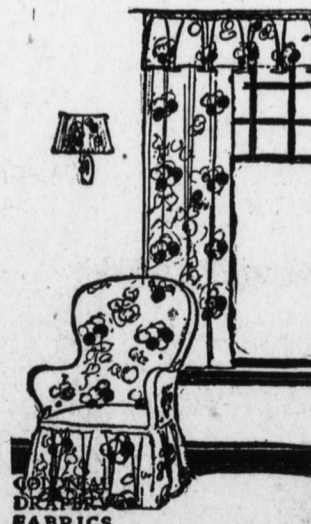
Be sure to see this authoritative book on home furnishing.

Any woman who wishes to beautify her home and make it distinctive can do so by using Colonial Drapery Fabrics.

It is a simple matter to make Colonial cretonne curtains as well as other useful cretonne articles that fit successfully into the plan and color scheme.

We have a large collection of Colonial Drapery fabrics. See them at your earliest opportunity.

BOWMAN'S—Fourth Floor.



Ribbons

Are Featured With Lace in Newest Parisian Gowns

Ribbons in all widths from the narrow picot edged, used as a tie belt, to the wide metallic ribbons which are combined with lace to make complete gowns are now in the forefront of fashion. Our new stocks are unusually comprehensive and introduce many charming novelties in design and fabric.

Satin ribbons from the baby width to the 8 inches 8c to \$1.69 yard.

Narrow ribbons in two-toned effects, picot edges, moires and grosgrain in a big line of shades; very popular for the new sweater and long blouses; 10c to \$1.50 yard.

Bag Ribbons

In a Fine and Varied Line

We are showing the largest line of ribbons for bags in the city. Including metallic ribbons, tapestry ribbons and dark brocades in 8 to 12 inches wide; \$1.75 to \$20.00 yard.

Chinese Squares for bags already lined; ready for the frame, in beautiful patterns and designs; \$5.00 a square.

Plain gold and silver metal ribbons for evening gowns, from the narrow widths for lacing slippers to 1 1/2 inches wide; 20c to 75c yard.

BOWMAN'S—Main Floor.

Three Attractive Lots of Women's Knit Underwear

Made of fine quality yarns into garments of service and comfort.

Women's fine ribbed knit vests and pants of first grade, vests with Dutch neck, elbow sleeves, pants ankle length. This is a special purchase which enables us to quote you the low price of 79c a garment.

Women's union suits of fine combed yarns. High neck, long sleeves, ankle length; Dutch neck, elbow sleeves, ankle length. These suits are seconds but exceptional good ones, the imperfections are very slight. Regular and extra sizes; \$1.29.

Women's pink cotton bloomers, full size. These bloomers are seconds but of exceptional quality; 59c.

BOWMAN'S—Main Floor.

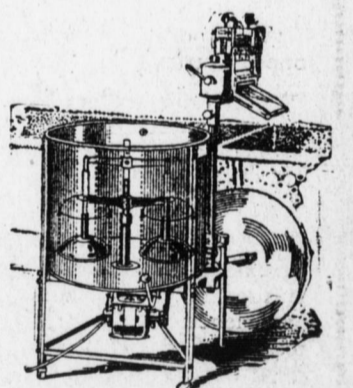
Install a Private Laundry in Your Home

The Vacuum Electric Washer appeals to all who have seen it. For months we investigated the various makes of electric washers before making a decision as to which one combined most of the essential features.

But these features appealed to us and we know they will impress you when you see the Vacuum Electric Washer.

It washes by air pressure and suction. No friction to wear clothes. Sanitary and easy to operate. Equipped complete with swinging wringer. Has a capacity of ten sheets. Very light and easy running. Permits washing the daintiest of fabrics or heavy blankets. Sold on Bowman's Club Plan.

BOWMAN'S—Furniture Dept., Fifth Floor



Window Ventilators

Fresh air without drafts, dust, rain or snow for bedrooms, living rooms, bath rooms, school rooms, hospitals and offices.



Continental Sanitary Window Ventilators
Fresh Air Without Drafts, Dust, Rain or Snow
For Bed Rooms, Living Rooms, Bath Rooms, School Rooms, Hospitals, Offices, Etc.

Height	Width Extension	Price
9 inch	15 to 23-inch	45c
9 inch	23 to 37-inch	50c
9 inch	31 to 49-inch	60c
9 inch	34 to 59-inch	70c
9 inch	23 to 37-inch	65c
9 inch	31 to 49-inch	75c

BOWMAN'S—Basement.