

STORE CLOSSES SATURDAYS AT SIX

STORE CLOSSES SATURDAYS AT SIX

Bowman's

HARRISBURG, WEDNESDAY, SEPTEMBER 24, 1919.

FOUNDED 1871

Aluminum Ware

Specially Priced For Thursday Selling

You'll forget H. C. L. if you read our house furnishing specials in our ads. during the month. In addition to Old Hampshire Gray Enamel and pure white enamelware at special prices, we will add to-morrow

Aluminum Ware of Heavy Gauge



Double Cereal Cooker; about 1 1/2-qt. capacity; \$1.35



Windsor Kettle with cover; about 6-qt. capacity; \$1.49.



Tea Kettle, about 5-qt. capacity; \$1.75.



Preserving Kettle, about 6-qt. capacity; \$1.39.

Cooking Pot with cover, about 6-qt. capacity; \$1.49.

BOWMAN'S—Basement.

Infants' Stockings, 29c

A fine ribbed cotton stocking for the little ones. These stockings are made of fine quality yarn in black and white; sizes 4 to 6 1/2; 29c pair.

BOWMAN'S—Main Floor.



Yarns That Will Not Knot Minerva Yarns

are wound on a special ball that unwinds like a silken thread—without fuss or fret. They're beautiful in color—very lofty and very strong. They knit into warm, serviceable garments that are soft and durable.

Let us show you the new Minerva Knitting Manual. It's a treasure trove of knitting suggestions for the skilled and the novice.

The services of our knitting-needle expert is at your command—free.

BOWMAN'S—Second Floor.



It Fits the Figure Perfectly



ATHENA UNDERWEAR FOR WOMEN AND CHILDREN

The luxury of perfectly fitting underwear is yours when you wear ATHENA.

Note the striking contrast between ATHENA and ordinary underwear.

ATHENA is tailored to fit the figure without being stretched at any point.

We are featuring the Athens make. Fits the body, giving ease and comfort; made in several styles. High neck, long sleeves, ankle length; Dutch neck, elbow sleeves and knee length. Low neck, no sleeves, ankle and knee length. These garments are medium weight of fine cotton rib. Regular size, \$2.00; extra size, \$2.25.



BOWMAN'S—Main Floor.

Tricolette and Tricotine

Dresses For Early Fall

Fashion has agreed that Milady must choose between Tricolette and Tricotine for her new street frock for the first cool days of Autumn.

Many new dresses in original styles are assembled in our dress section. Tricolette and its sister weaves achieve gowns of exceeding charm, because of the pliancy and softness of these fabrics. For the tailored models, Tricotine comes into glory!

Straight lines, blouse and coat styles are notable.

Embroidery predominates as trimming, but there are many smart effects resultant from the clever use of beads, lace, braids and buttons.

Tricolettes in mouse, brown, navy and black; \$49.50 to \$98.50.

Tricotine in navy, \$29.50 to \$75

BOWMAN'S—Third Floor.



Women's Union Suits

Special 59c

Women's fine ribbed union suits; early fall suits with low neck, sleeveless, tight knee; specially priced; 59c.

BOWMAN'S—Main Floor.

Women's Silk Stockings

One of the charms of a woman's wardrobe is good silk hosiery. Silk hosiery that has style, serviceability and fit. The Bowman standard silk hosiery fulfills the requirements. We are featuring beautiful ingrain silk hosiery of heavy weight, silk tops and foot; full fashioned in black only; \$2.95.

BOWMAN'S—Main Floor.

Sale of Sheets and Pillow Cases At the Wholesale Prices of To-day

Wholesale Price of Utica and Pequot Sheet by the Dozen	Our Price by the Piece
63x90, \$20.65	63x90, \$1.72
63x99, \$22.64	63x99, \$1.89
72x90, \$23.05	72x90, \$1.92
72x99, \$25.28	72x99, \$2.11
81x90, \$25.45	81x90, \$2.13
81x99, \$27.93	81x99, \$2.33

PILLOW CASES

45x36, \$5.98 45x36, 50c

Bolster Cases, 42x72, 79c

Not all sizes of a kind, but the size you want in the lot.

Salem sheets, bolster and pillow cases at just about what they cost today to buy them wholesale.

Sheets, 63x90, \$1.45 each; 63x99, \$1.59 each; 81x90, \$1.79 each; 81x99, \$1.97 each; 72x90, \$1.69 each.

Pillow cases, 42x36, 39c; 45x36, 40c.

Bleached sheets; size 72x90; center seam; made of good quality muslin; \$1.39 each.

Double bed size sheet; 81x90. Made of good quality sheeting. Three-inch hem at top, ready for use; \$1.59 each.

SALE CONTINUES THURSDAY

BOWMAN'S—Second Floor.

Make Your Home

A Better Place to Live in

Soon cold and disagreeable weather will keep you indoors. Wouldn't a new rug here and there make your home more comfortable and improve its general appearance? Surely, rugs and floor coverings of all sorts won't cost less than they do now for years, probably. And we fortunately bought this Fall stock for less than we'd have to pay to-day, making our prices still more important and valuable to you!

And the Bowman rug department has for years been known for its excellent patterns, large assortments and moderate prices.

Axminster Rugs

From our best mills, in floral, all-over and Oriental patterns. 6x9 ft., \$22.50 and \$32.00. 8-3x10-6 ft., \$35 and \$45. 7-6x9 ft., \$30.00. 9x12 ft., \$40.00, \$45.00 and \$52.50. 11-3x12 ft., \$50.00.

Whittall Rugs

New colors and patterns in Body Brussels, Anglo Indian and Anglo Persian Wilton, 9x12; \$75.00 to \$123.00.

Wool Tapestry Rugs

Seamless tapestry rugs in floral, all over and medallion patterns; 9x12 ft., \$27.50 and \$30.00. 8-3x10-6 ft., \$24.00. 6x9 ft., \$17.50.

BOWMAN'S—Fourth Floor.



Roxbury Tapestry Rugs

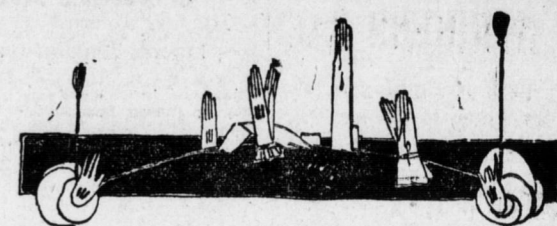
Full ten-wire in all over and Oriental patterns; 8-3x10-6 ft., \$37.50. 9x12 ft., \$40.00 and \$45.00. 11-3x12 ft., \$52.50.

Loom Tufted Rugs

In beautiful Oriental colors and patterns— 4-6x7-6 ft., \$30.00. 6-9x9 ft., \$52.50. 9x12 ft., \$90.00.

Inlaid Linoleum

In tile and Mosaic patterns, in blue, green or brown; \$1.35 sq. yd. Felt base floor coverings in good patterns; two yards wide; 59c sq. yd.



Fashion Demands Gloves

For Thursday We Offer Specials in Kid, Silk and Leatherette Gloves

Undoubtedly the glove situation is serious and those of you who favor being in fashion, will consider yourself fortunate in securing a season's supply at these special prices. We were extremely fortunate in getting a good stock for Fall and Winter, we'd like to have one twice as large.

Lot No. 1

111 Pairs of White and Black Kid Gloves

Special, 95c

Two-clasp, 5-row and Paris point, embroidered backs; sizes 5 1/2 to 7. These gloves are what is termed as menders, but every pair is good; 95c pair.

Lot No. 2

650 Pairs of Silk and Leatherette Gloves

Special, \$1.15 Pair

Double finger tips, embroidered backs of Milanese and Tricot Silk, in two-clasp. These gloves are perfect fitting. The leatherette gloves are of this season's styles and if you wait to buy them they will, no doubt, cost you considerably more. Very dressy and very much like a kid glove. When washed on the hand, they wash beautifully; \$1.15 pair.

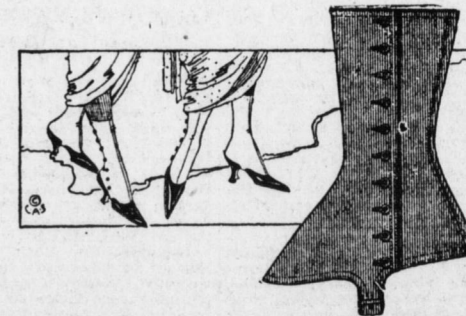
Lot No. 3

360 Prs. of White Silk Gloves

Special, 65c Pair

Every size, in white, black and some colors. Double finger tips, two-clasp, crochet backs, perfect fitting; 65c pair.

BOWMAN'S—Main Floor.



The Vogue of Spats

Fashion emphasizes the importance of the spat as part of the footwear of the well-dressed woman. With the patent leather pump it is unusually smart. But to be effective, the pump must be always shapely, always well-fitting. Our spats were cut so that they fit perfectly and fashioned of firm materials. All the seasonable colors are here. \$3.50 and \$4.00.

Spat pumps in patent coltskin; \$9.50. Spat pumps in black kidskin; \$9.00. Spat pumps in black satin; \$8.50. All with turned soles and Louis XV heels.

BOWMAN'S—Main Floor.