

STORE CLOSSES
SATURDAYS AT SIX

Bowman's

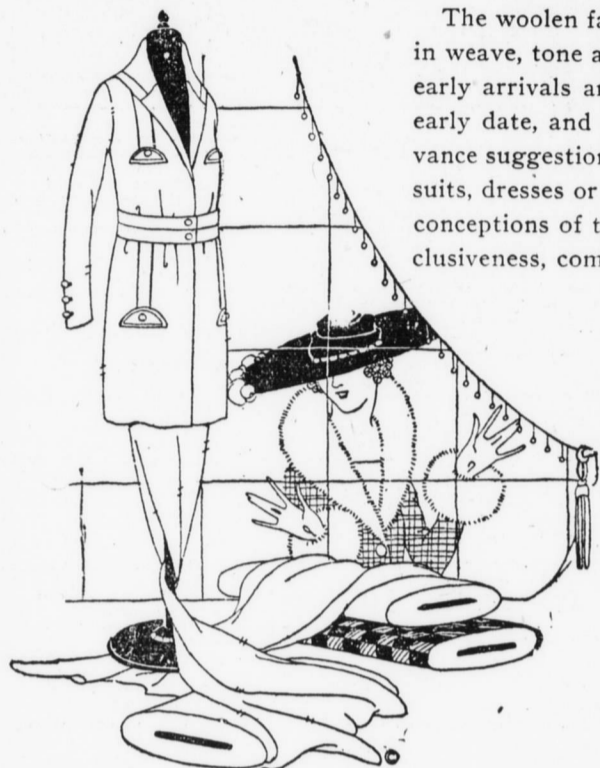
STORE CLOSSES
SATURDAYS AT SIX

TELEPHONE 1901-2356 UNITED

HARRISBURG, TUESDAY, SEPTEMBER 9, 1919.

FOUNDED 1871

Woolen Dress Goods



The woolen fabrics are most surpassing in weave, tone and effect this season. Our early arrivals are quite numerous at this early date, and they offer charm and advance suggestions for the Fall garments—suits, dresses or skirts. Up to the minute conceptions of the latest fashions and exclusiveness, combined with the assistance of Buttericks Patterns and Fashion Publications will surely assist in reducing the cost of all garments. They offer the most pleasing of accomplishments—the construction of one's own individual taste. This is why so many people enjoy possessing distinctive apparel, make their selection early.

54-inch Silvertweed suiting; \$4.95 yd.
54-inch Heattertone Jersey; \$4.50 yd.
54-inch Clay serge; \$5.50 yd.
45 to 54-inch French Twill serges; \$2.50 to \$4.95 yd.
48 to 54-inch Tricotine; \$4.85, \$5.50, and \$6.50.
56-inch Black and White Velour plaid; \$6.50 yd.
48 to 54-inch Plaid Skirtings; \$1.50 to \$5.50 yd.

54-inch Kittens Ear Jersey; \$6.95 yd.
54-inch Chinchilla Plaid back coating; \$5.95 yd.
42-inch Mohair and Wool Premiere; \$2.50 yd.
40-inch Silk and wool poplins; \$2.50 yd.
40-inch Togo cloth; \$2.25 yd.
54-inch Black and Navy wool Bengaline; \$3.95 yd.
54-inch Black and Navy Cheviot serge; \$3.95 yd.

BOWMAN'S—Main Floor.

Sale of Blankets

Yes, these are pretty hot days to talk blankets, but you will wish for something that will keep you good and warm a little later. This sale is your opportunity to secure warm blankets much below what they would cost if we had to buy them in the market today. The indications are they will be scarce and higher in price for some time to come. We bought early in order that our customers might save by early buying.

Small cotton blankets in gray and white with pink and blue borders, \$2.49 pair.

Single bed blankets in tan, good weight and nap; 60x76, \$2.98 pair.

Double bed blankets in gray, tan and white with assorted colored borders; good quality and nap; 64x76; \$3.19 pair.

Wool Nap bed blankets in white and gray, and plaid; double bed size; whipped ends; extra heavy and warm; \$4.69 pair.

Same quality blanket as above, only larger with bound ends; \$5.59.

Extra large wool nap blankets in white and gray; assorted colored borders; mohair binding; 72x84; \$6.49 pair.

Camp blanket in light and dark gray; wool mixed; heavy weight; suitable for auto robe or any kind of general use; 64x80; \$6.89 each.

Beacon blanket of good wearing quality. Of course, we need not comment on these as the name signifies the quality, best of patterns and durability. We have these blankets in single and double, whipped and bound ends in large selection of patterns; 89c to \$5.00 each.

Double bed blanket in fancy plaids; extra heavy fleeced and much warmer than all wool blanket. These goods must be seen to appreciate the value of them; \$6.79 and up.

Wool mixed plaid blanket in pink and white, and blue and white; large size; made of selected wool; soft and fleecy; \$10.98 pair.

White double bed blanket in pink and blue; ribbon bound to match; 70x80; good heavy weight and fleecy; \$9.98 pair.

BOWMAN'S—Second Floor.



Special Sale, 450 Pairs of French Kid Gloves

(Menders)

\$1.10 Pair

These gloves are of fine quality French Kid and best workmanship. Only once or twice a year does a store have an opportunity to secure gloves, such as these, to sell at remarkable reductions. These gloves are returned to the factory from various stores on account of slight imperfections, skilled workmen retouch them, making them practically as good as firsts. They come in white, white self, black self, black with white, tan, brown and gray; one and two clasp; pique and overseam in Paris point and 5 row embroidered backs.

Come early so as to get a good selection while the selection is good. With the advancing prices of kid gloves, this offer should interest every woman; \$1.10 pair.

BOWMAN'S—Main Floor.

Specials From Bowman's Basement

Androck oven, for use on oil or gas stove; it roasts, bakes and toasts; 75c.

Clothes props; 8 feet long; 15c.

Oval metal serving tray; 13½x16 inches richly illustrated in colors; 30c.

Round metal serving tray; 12 inches; richly illustrated; 25c.

Slaw cutters; well made with adjustable knife; 30c.

Large cabbage cutters for Sauer Kraut. These cutters have three knives and cabbage box; \$1.75.

O' Cedar Oil; 4 oz. bottle; 19c.

Aluminum Basting spoon; 13 inches; 30c.

Corn graters and shellers; 20c.

Vrooman's sink strainers; 15c.

Watch Our Ad For Specials From the House-furnishing and China Departments During the Month of September.

BOWMAN'S—Basement.

Sturdy Little Feet



Turn Toward School

Every morning you can see hundreds of school children on their way to school in various sections of the city. To and fro several times each day and play-time, means wear and tear of shoe leather, and suggests foot comfort for growing feet.

"Right shape" shoes built of carefully selected materials are as much appreciated by mothers as well as their energetic children. A wide range of the New Fall Styles and leathers appropriate for dress and play await your inspection here.

We pride ourselves with the fact that we carry narrow widths in all our children's shoes, assuring proper fit.

These shoes are carried in patent calfskin, black calfskin, brown calfskin, and black kid-skin; priced according to size; \$4.50 to \$6.00.

BOWMAN'S—Main Floor.

Women's Lisle Stockings

65c Pair

Women's full fashioned black lisle stockings with flexible tops and double heel and toe. A stocking that will give service and correct fit; 65c pair.

BOWMAN'S—Main Floor.

Women's Vests

23c

A nice lot of women's fine cotton ribbed vests; made from first quality yarns. Made low neck, sleeveless trimmed; specially priced 23c.

BOWMAN'S—Main Floor.

An Unusual Ensemble of Fascinating Modes in Fall and Winter Suits

Exceptional charm is added by the master touch of skillful tailoring and beauty of fabrics. Artistic simplicity reigns supreme in our exquisite collection of suits. The perfection of silhouette and durability are marked features and the excellent variety make it possible for every woman to suit her individual type.

Rich furs enhance numerous clever models, others are handsomely embellished in gorgeous embroidery or braidings. The inevitable button trimmings are interestingly portrayed on others.

Fine braiding accentuates the beauty of an Oxblood Bolivia model built on long, slenderizing lines. Blouse back is held in place by short belt of heavily braided self material.

Luxurious Squirrel collar and pocket tabs trim a suit of distinctive loveliness, created in Bodenx, Duvet Superior. Fine pin tucks form inserts on sides of coat and skirt; also finishes sleeves.

A rich tawney shade of brown tricotine is the material which fashions a smart tailleur. This suit is developed along straight lines; coat is cut to form large pockets, self string belt, button trimmed.

All the prevalent colors and materials of the new seasons are represented in our selection of suits:

Pompeian	Beaver	Mouse	Duvetyn	Silvertone	Massena
Titian	Seal	Martin	Duvet de Laine	Peach Bloom	Velour
Copper	Java	Pekin	Rayonnier	Duvet Twill	Tricotine
Tobacco	Reindeer	Copen	Gold Tip	Velour de Laine	Serge
Port	Mole	Brown	Lustrola	Chevrona	
		Navy			

Prices Range From \$75 to \$275

BOWMAN'S—Third Floor.

