

*Everything Is
Plentiful NOW!*

You'll see no hint of scarcity of any of the things you want for Fall, if you come to our store now. We were early to market, and we bought as broadly as we dared—so you'll see each day bringing in more new things that will hold constant interest for our friends.

But the shortage of supplies is very real, and will be fully realized when we go back for further supplies, with stores all over the country doing the same thing.

There has never been a time in this store's history, when we felt so much justification for urging our friends to BUY EARLY.

Today assortments are plentiful, in just the goods that everybody wants, and the prices are the lowest possible, and every market indication would suggest that they are much lower than they are likely to be later on, even if the goods are obtainable at all, in many lines.

Sale of
Fancy Turkish Towels

An opportune arrival of Fancy Turkish Towels enable us to make this remarkable offer in the face of an outlook that clearly indicates a scarcity of this merchandise on account of labor troubles. We have just been the recipient of a notification from one of the leading Turkish Towel Manufacturers in the country, that their plant as well as all the mills in their section of the country, have been closed down indefinitely, on account of a strike caused by their inability to meet the demands of the weavers.

The Towels we offer are classed as seconds because of slight mill imperfections, such as a dropped thread or small stains which do not impair the utility of the towel, but constitute an objection in a first quality article.

Fancy Turkish Towels in plaids and stripes; colors, pink, blue and yellow, 39c each.

Fancy Turkish Towels, in jacquard effect, also in plaids and stripes; colors, pink, blue and yellow. Prices, 50c, 69c and 75c each.

BOWMAN'S—Second Floor.

Continuation Sale of
Sheets and Pillow Cases
At the Wholesale Prices of Today

Such well-known makes as Pequot and Salem sheets and pillow cases. These prices speak for themselves, as they show the prices other merchants are obliged to pay for this merchandise on today's market. But months ago we were fortunate enough to secure a large quantity of this through our purchasing syndicate which buys for a number of the largest stores in the country.

Note the price asked for them to-day at wholesale, by the dozen and the price we are selling them to you:

Pequot Sheets Today	Our Price Each Single Purchase	By the Dozen	Or By the Dozen
63x90—\$20.65	63x90—\$1.72	63x90—\$206.50	63x90—\$20.65
63x99—\$22.64	63x99—\$1.89	63x99—\$226.40	63x99—\$22.64
72x90—\$23.05	72x90—\$1.92	72x90—\$230.50	72x90—\$23.05
81x90—\$25.54	81x90—\$2.13	81x90—\$255.40	81x90—\$25.54
81x99—\$27.93	81x99—\$2.33	81x99—\$279.30	81x99—\$27.93
45x36—\$5.98	45x36—50c	45x36—\$59.80	45x36—\$5.98

PILLOW CASES

Salem Sheets and Pillow Cases at The Wholesale Price of today:

63x90—\$1.45	81x90—\$1.79
63x99—\$1.59	81x99—\$1.97
72x90—\$1.69	Pillow Cases:
	42x36—39c

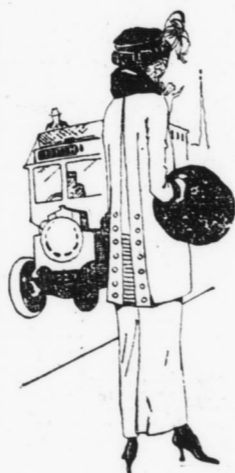
Arrowdale bleached sheets, 81x90, made of good standard sheeting, ready for use, \$1.19.

Wave Crest sheets, 72x90, made of good quality muslin, 32-inch top hem, \$1.39.

This is a bedding opportunity so unusual that you can well afford to lay in an extra supply for your beds at these prices.

BOWMAN'S—Second Floor.

*Suits For Young and Old, Big and
Little Women*



Here are the youthful stylish suits for the miss—the slightly high waisted models with the pinch back and full irregular peplums. The semi-tailored narrow, cloth or leather belted models with large cloth pockets or collars and pockets of fur—just as our smartly dressed up-to-date young lady prefers. The small woman who wants to be well dressed can certainly find a large selection here.

A great deal of care has been taken in the selection of suitable clothes for the woman above average size. They add to her inches and subtract from her pounds and give her an air of youthful smartness. These are in tailored, semi-fitted and dressy models. Both long and short coat lengths are favored. Skirts are a trifle longer in most instances. All the leading shades and fabrics in sizes 14 to 44, 40½ to 48½ and 37 to 51.

Prices, \$39.50 to \$250.

BOWMAN'S—Third Floor.



Special Tomorrow
**Milanese and Tricot
Silk Gloves**
65c Pair

All sizes in plain white, white with black, mode and gray.

These are two-button extra heavy at this price. Seconds from a well-known maker of gloves and we will gladly help you find the slight irregularities.

Special values at 65c pair.

BOWMAN'S—Main Floor.



**Muslin Underwear and
Nightgowns**

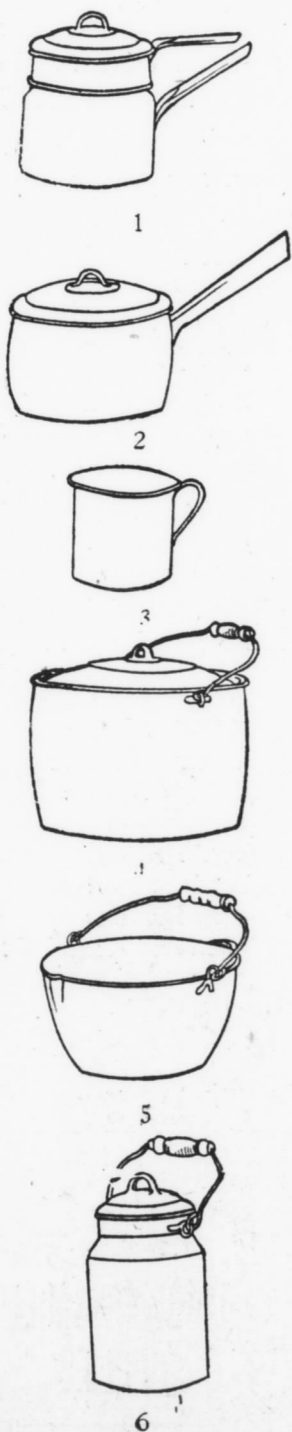
Envelope Chemise in nainsook and batiste. Lace and embroidery trimmed at \$1.19, \$1.25 and \$1.50.

Envelope Chemise in nainsook and batiste, some having bodice tops of embroidered organdy; lace and ribbon straps, lace and embroidered trimmed and some with V-back and front of lace, \$1.75 to \$4.98.

Gowns of fine nainsook in round and square neck, in flesh and white. Some very pretty styles in sleeveless gowns and in slip-over models in white and pink windsor crepe, \$1.25 to \$4.98.

Knickers in pink and white batiste, crepe and saten; full cut and firmly reinforced, 95c, \$1.25, \$1.39

BOWMAN'S—Second Floor.



A Special Purchase of 2724 Pieces of
White Enamel Cooking Utensils

Will be Placed on

Special Sale Tomorrow

At Prices That Mean a Saving of Thirty to Fifty Per Cent.

These goods are all Snow White, made by the American Stamping and Enamel Co., of Bellaire, Ohio, and Masselin, Ohio, who have a reputation for making high grade enamel ware. The quantities of most items are large, while on several numbers the supply is considerably less so we suggest an early visit to the basement while the assortment is complete.

Hundreds of thousands of dollars' worth of this enamel ware was

purchased by a Western jobber before the war ended. The object he had in mind did not materialize, so while he was in New York unloading this stock, our House Furnishing Manager was advised of this opportunity before it was placed on public sale. Considering that there is no likelihood of such values in enamel ware of this quality for months to come, it is decidedly to your advantage to replenish your kitchen needs at these prices:

Every Piece Snow White and Triple Coated Enamel
Many Large Pieces Suitable For Fruit Preserving

- | | | | | |
|--|---|---|---|--|
| 1—Double Rice or Cereal cooker; 1½ quart, \$1.25; 2½ quart, \$1.45 | 4—American Cooking Kettle with bail handle; 4 quart, 79¢; 6 quart, 98¢; 8 quart, \$1.25; 10 quart, \$1.69; 12 quart, \$1.89 | 6—High Milk Kettle; 4 quart, 89¢ | 8—Deep Dish Pan; 17 quart, \$1.25 | 10—Water Pail; 10 quart, \$1.19 |
| 2—American Sauce Pan with long handle; 2 quart, 59¢; 3 quart, 69¢ | 5—Large Preserving Kettle with lip and bail handles; 18 quart capacity \$2.25 | 7—American Cooking Kettle with 2 side handles; 3 quart, 69¢; 4 quart, 79¢; 6 quart, 98¢; 10 quart, \$1.69; 12 quart, \$1.89 | 9—High Water Pitcher; 3 quart, 75¢; 4 quart, 98¢; 7 quart, \$1.59 | 11—Wash Basin; 11 inch, 35¢; 12½ inch, 49¢ |
| 3—Kitchen Cup; 1 pint capacity, 23¢ | | | | 12—Lipped Coffee Pot; 1½ quart, 59¢; 4 quart, \$1.39 |

BOWMAN'S—Basement.

