

STORE CLOSSES
SATURDAYS AT SIX

Bowman's

STORE CLOSSES
SATURDAYS AT SIX

HELL 1901-2356 UNITED

HARRISBURG, FRIDAY, AUGUST 22, 1919.

FOUNDED 1871

Women's Silk Stockings
Special at \$1.39

Women's fine silk stockings, full fashioned, first-grade quality, with lisle tops and soles; black and white; all sizes. An exceptional value. Specially priced at \$1.39.

BOWMAN'S—Main Floor.

Saturday Specials From the
Basement

WATER TUMBLERS
75c Dozen

The serviceable kind, used by boarding houses, lunch rooms, etc.

BREAKFAST PLATES
6 for \$1.00

Made of white English porcelain.

LAWN MOWERS
\$5.50

Easy running, three 12-inch blades; can be adjusted to cut high or low grass.

CLOSET BRUSHES
39c

Good quality brush, with bent handle, for toilet use.

WINDOW SCREENS
65c

Adjustable kind, 24 inches high, extending from 23 to 37 inches in width.

WHISK BROOMS
25c

Made of good corn, two rows of stitching.

GARBAGE CANS
\$1.75

Made of galvanized iron, 10-gallon capacity, with deep-flanged cover.

IRONING BOARDS
\$1.10

Selected lumber; good, wide kind, about six feet long.

BOWMAN'S—Basement.

Women's Pink Vests 39c

Light weight fine cotton ribbed pink vests, low neck, sleeveless, trimmed; sizes 36 to 38 only. Specially priced at 39c.

BOWMAN'S—Main Floor.

Service School Clothes
For the Little Boys

He cannot wear any old thing then as he may do during vacation. You want him neatly dressed in sensible garments and at the most reasonable price possible. Our children's department offers unexcelled assortments for the little chap four to eight years of age.

Boys' pants in blue serge, mixtures and corduroy, lined and unlined. Strong inside button hole band, strong pockets. Band and button at knee, \$1.50, \$1.65, \$2.98, \$3.50 and \$3.95.

Boys' collars, soft and laundered, Eton and sailor style, 15c, 20c and 25c.

Boys' blouses in striped percale, chambray, madras and crepe; attached and detached collar, 65c, 75c, 85c, \$1.00, \$1.25 to \$2.50.

Boys' shirts, attached and detached collars; plain white, white striped, percale, madras and crepe, 75c, \$1.00, \$1.25, \$1.50 to \$2.50.

Boys' muslin underwaists with two rows of buttons at waist and adjustable shoulder strap, 50c and 59c.

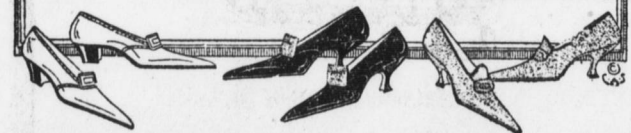
BOWMAN'S—Second Floor.

Women's & Misses Fashionable Pumps
Smartest Creations for Summer
Pumps and Oxfords
In This Clearance Sale At
One-Third Off
Regular Prices

Broken lots in white canvas, white nubuck, black and brown kidskin, black and brown calfskin, patent coltskin and black suede.

No C. O. D's. No Exchanges

All Sales Final
BOWMAN'S—Main Floor.



Charm And Newness In The
Fall Suits and Coats

A charming array of cleverly designed Fall Suits in the season's most popular fabrics, models that are particularly adapted for practical service yet appeal to the discriminating woman by their trim graceful lines and modish colors.

For instance, a snappy sports model is developed in green or oxford heather mixture, with military pockets, pleated back and convertible collar. Moderately priced at \$45.

A conservative burella cloth suit in navy, green or black in semi-tailored style, belted and button trimmed. An excellent value at \$45.

These suits have that unusual finished touch so essential to semi-tailored models. A splendid assortment of high grade suits at \$45 and up.

And In Coats---

A marine blue cheviot coat with flare back and a nobby sleeve that forms a yoke. Has tailored pockets, is shell button trimmed and has navy velveteen collar and cuff tabs. \$45.00.

A smart flare back coat model on full raglan lines, in Scotch tweed. Has large convertible collar, leather belt and trim. \$45.00.

Polo coat in tan camels hair; straight box effect with semifitted back, string belt, novel double pockets and button trimmed. \$45.00.

An extensive line of these distinctive models which clearly emphasize the season's demands and a wide variety of materials and colorings to choose from. Prices ranging from \$39.50 to \$225.00.

BOWMAN'S—Third Floor.



See the Eldredge
Two Spool Sewing
Machine

Special Demonstration in
Charge of Factory Expert

This machine has the advantage of holding any ordinary spool with 200 yards of thread. So, why wind bobbins and only get 50-yard service? The Automatic Tension is a genuine time saver. It produces a perfect stitch without adjustment, on all classes of work. It saves the time necessary in changing tension on ordinary machines—a triumph of the twentieth century.

The Eldredge Rotary, The Eldredge Special, The Vindex and The Bowman Special—all machines of real merit—are being demonstrated by an efficient factory expert. These machines are all fully guaranteed, all are drop heads, easy running and

Can Be Bought on the Bowman Club Plan
\$1.00 Delivers One to Your Home

Liberal Allowance on Your Old Machine
BOWMAN'S—Main Floor.

Specials In Bowman's
August Sale Of Fine
Furniture

Antique Mahogany Bedroom Suite, a very high grade well made suite of four pieces including Dresser, Chiffonier, Tripple Mirror Dressing Table and full size bed. August Furniture Sale, 4 pieces, \$219.00.

American Burl Walnut Bedroom Suite, Queen Anne period, a very attractive suite. Bow End Bed, Men's Chiffrobe, Vanity Dressing Table and Dresser. Same suite can be purchased in Antique Mahogany. August sale price, 4 pieces, \$249.00.

Overcovered tapestry Living Room Suite, large davenport, chair and rocker, all pieces having loose spring cushions, very comfortable and well made. August sale price, 3 pieces, \$198.00.

American Walnut Dining Suite, Queen Anne period, 60 inch buffet with mirror, 54 inch extension table, square china closet, five diners and host chairs, covered in genuine leather. August Furniture Sale price, 9 pieces, \$279.00.

Silk floss Mattress, genuine 100% Java floss, for full size beds, Art ticking. August price, \$21.75.

Bowman's Special Boxspring, for all size beds, well upholstered good grade of ticking. August price, \$22.50.

Antique Mahogany finished Poster Beds, full size and turn size. August price, \$24.50.
BOWMAN'S—Fifth Floor For Fine Furniture.

New Blouses That
Sparkle With
Autumn Beauty



Delightfully original in style—so different from the best Summer models—new in line and decorations—different in fabric as well as form.

Some are vivid, with their brilliant new colorings, many are quite demure; some simple; some elegant—all tasteful and becoming.

What a delight to be among the first to wear the new modes!

Georgette and net blouses in all the new shades; white, flesh, coral, gray, taupe and peach, also in white washable net. Dainty frills and pleats, round collars and collarless, smart finished cuffs. Fresh new lot to sell at \$5.95.

White georgette blouses with bib frill, bobbinette edging and cuffs trimmed accordingly. Buttons down back and has a touch of black ribbon bows at collar and on cuffs. A new and popular model at \$10.50.

BOWMAN'S—Third Floor.

Georgette blouses in Russian model with real lace and Venetian lace trimming. And others decidedly attractive with the new wool embroidery in contrasting colors, \$4.95 and up.

Georgette blouses and crepe de chines in white flesh, French blue, rich maize and gray. Beautifully embroidered, some beaded and others prettily trimmed with tucks and frills. A good assortment of sizes and styles at \$4.38.



The New
Hats

Every woman is interested in seeing the new hats, and here she may see them at their best. Hundreds and hundreds of them are here.

Smart small shapes that are entirely along new lines and very large hats—all fashion's favorites. Developed in such materials as panne velvet, Lyons velvet, duvetyne, beaver and silk. In dark shades and the new colors, such as nasturtium, orange, amber and China blue. Style and quality in every one according to the usual Bowman standard of fashionable millinery. All priced as moderately as this grade of millinery will permit.

The soft velvet hats that are in such demand this Fall are especially conspicuous in this display.

BOWMAN'S—Third Floor.

Corset Specials

Elastic-top, back-lace corsets, in flesh; made of excellent quality batiste; sizes 20 to 25; unusual value, \$1.10.

White coutil corsets, back lace, medium bust, long, free hips; La Boma make; excellent value, \$1.10.

Front-lace corsets, made of fine quality white coutil; popular make; sizes 21 to 32; excellent value, \$2.10.

Bandeau Brassieres, in flesh brocade, back closing; very special, 65c.

BOWMAN'S—Second Floor.

Saturday Specials In
Silk, Wash Goods and
Dress Goods

36-inch Fancy Silks—stripes and plaids; grounds of satin, Louisines and Chiffon Taffeta; some with satin over-stripes and checks. Suitable for dress, waist, skirts and linings, \$1.69 yd.

Double with Black Silks; 10 most popular weaves, ranging in price from \$1.59 to \$2.75 yard. These cannot be duplicated on to-day's market without paying considerable more for them.

44-inch Plain Voiles; 10 good colors, 45c yd.

36-inch Irish Linen Finish Suiting; 3 colors, rose, tan, blue, 39c yd.

36-inch Madras; medium colors; very fine, count 100x125 threads to the square inch, 59c yd.

54-inch Covert Suitings, \$2.95 yd.

54-inch Fancy Mohair Suitings, \$1.95 yd.

54-inch Navy men's wear Serge, \$3.25 yd.
BOWMAN'S—Main Floor.

Children's Socks 19c

Plain lisle socks, blue, tan and pink. Not all sizes in all colors, but good assortment to choose from. Specially priced at 19c.

BOWMAN'S—Main Floor.

Columbia Yarns at
Prices One-Third Less

This sale offers an exceptional opportunity of securing these well-known yarns at one-third less than regular prices. All first class materials in perfected colors. But as this is a special purchase of a line that we do not usually carry in stock we cannot permit any exchanges at this special price.

Columbia Floss 30c

Colors are old rose, raisin, gas blue, Nile, black, watermelon pink, shadow lawn, Burgundy, robin's egg, hunter and vert de mer.

Columbia Germantown 40c

Colors are scarlet, wood brown, sunrise, cream white, Oregon green, old blue, purple, peacock, maize, black, yellow and gray.

Columbia Teazle Wool 30c

Colors are sunrise, black, old rose, plum, maize, cream white, gray and brown.

Columbia Scotch Sweater Yarn 40c

Colors are dark gray, turquoise, old blue, old rose, white and black.

Columbia Saxony 26c

Colors are blue, white and pink.

Worsted Khaki Yarns 60c

This is a very good grade yarn and makes a soft, warm sweater or stockings for cold weather wear.

BOWMAN'S—Second Floor.