

STORE CLOSSES  
SATURDAYS AT SIX

**Bowman's**

STORE CLOSSES  
SATURDAYS AT SIX

BELL 1901-2356 UNITED

HARRISBURG, MONDAY, JULY 21, 1919

FOUNDED 1871



**Wash Goods**

*Presenting the season's most desirable wash fabrics*

**At Popular Prices**

The finest of weaves, both foreign and domestic; are represented in our well assorted stock and the styles are excellent. In fact, the most tastefully selected assortment we have ever offered.

40-inch embroidered Swiss organdie, in Copen., rose, pink and orchid; \$2.00 yard.

36 and 40-inch fancy voiles; English and American weaves; silk stripes, neat checks and figures and the much wanted georgette designs; 48c, 59c, 75c, \$1.00 and \$1.25.

32-inch Foreign and Domestic gingham; plaids, stripes and plain colors; 75c and 85c yard.

36-inch Woven Plaid Tissues; extra fine grades; 85c and \$1.00 yard.

38-inch Printed Organdies; neat designs in tan, green, pink and lilac; 75c yard.

36-inch Usona silk; silk and cotton mixture for waists or dresses. Also used as foundation linings; 59c yard.

36-inch Kimono silk; grounds of navy, Copen, Wisteria, Myrtle, orange with pretty Oriental designs; \$1.00 yard.

35-inch plain and fancy Habutune silks of superior quality; permanent luster; 79c yd.

30-inch Printed Costume Crepe; white and tinted grounds with neat floral designs; 45c yard.

BOWMAN'S—Main Floor.

**Frocks Of Summertime Loveliness,  
In Voile, Gingham, Linen And Organdie**



All the joy and happiness of summer is expressed in the unrestrained gaiety of the charming voile, gingham, linen, organdie, both plain and figured, frocks which have been adopted as the smartest sort of modes for all occasions. Infinite in selection, styles and sizes. Indeed from the moment of their presentation they are sure to gain favor.



**\$4.95, \$5.75, \$8.75  
\$13.95 up to \$19.50**

BOWMAN'S—Third Floor.

**Men's Underwear 57c**

Men's balbriggan shirts and drawers of fine quality yarn; ecru color. Made to stand hard wear. Short sleeves and ankle length.

A rare opportunity to buy in a season's supply at this attractive price of 57c.

BOWMAN'S—Main Floor.

**Women's Light Weight**

**Vests 29c**

A special selection of women's light weight vests for this special event. These vests are seconds; exceptional ones made from finest quality combed yarn. A fine ribbed vest with bodice tops; well made and well fitting in white only; 29c.

BOWMAN'S—Main Floor.

**Summer Togs**

**For The Little Tots**

On summer days Baby is free to romp or creep, to play in the grass or on the porch, and so more Dresses and other Baby Things are needed.

These, too, are the days when our stocks are fullest of the things that Mothers want to see and select from.

Everything for Baby's comfort, as well as dress up things. Intelligent service, too.

Infant's short white dresses; 6 mo. and 2 years in Nainsook Bishop and yoke style, lace and embroidery trimmed; 75c, 85c, \$1.00 to \$5.50.

Children's creepers, white and colored in poplin, chambray, and crepe; low and high neck; long and short sleeves; smocked and hand embroidered; 85c, \$1.00, \$1.50, \$1.95 to \$4.50.

Children's rompers, 2 to 6 years. Plain striped chambray, crepe madras and crepe. Beach style and rubber at knee; 85c, \$1.00, \$1.25, \$1.50 to \$4.50.

BOWMAN'S—Second Floor.



**BEADS BEADS**

Special attention to the well dressed women of Harrisburg! Beads are the most attractive and a finishing touch to the toilette. Pearl beads are always in the lead and the most pleasing in their daintiness and attractiveness for the women of refinement.

We have a large assortment of pearls in every length; French Pearl, Indestructible, La Tausca, etc.; \$1.00 to \$40.00.

The new French Soutaire; \$5.00 to \$30.00.

Other beads in the newest shades and good lengths; \$1.00 to \$15.00.

BOWMAN'S—Main Floor.

**Summery Suggestions From Our**

**Draperies Department**

WASHABLE COUCH COVERS, some with fringe, some plain with colored border, full size, \$1.45, \$2.00 and \$2.25.

SCRIM AND MARQUISSETTE CURTAINS, plain hemstitched, others lace trimmed in white and ecru—the very best kind of summer curtains; \$1.39 to \$6.50 pair.

PLAIN AND FIGURED SCRIM, Marquisette and Madras in white, Ivory and Ecru for curtains; 36 to 50 inches wide, a wide range of patterns; 29c to 95c yard.

CRETONNE FOR ALL PURPOSES; upholstering cushions, slip covers and draperies in light, medium and dark colorings, patterns to suit every taste; 36 inches wide; 59c to \$1.89 yard.

MATTING BOXES AND CEDAR CHESTS; 30 to 52 inches long. Some cedar chests are brass and copper bound, others plain; made of genuine Tennessee Cedar. The best made boxes it is possible to get; \$6.50 to \$47.00.

GRASS PORCH MATS; up to this time they were hard to get. Now have enough to last for a few days; 10c each.

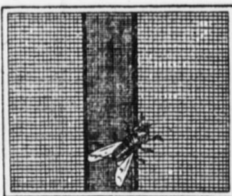
BOWMAN'S—Fourth Floor.

**Window Screens Specials**

**For One Day's Selling Only**

Adjustable screens in the following sizes—

- 15x33 window screens; 39c
- 18x33 window screens; 45c
- 24x37 window screens; 65c
- 28x37 window screens; 70c
- 28x41 window screens; 75c
- 30x33 window screens; 70c
- 30x37 window screens; 78c



BOWMAN'S—Basement.

**Cambric and Sheets**

**Priced to Please**

Bleached cambric in useful lengths; 36 inches wide; good quality; 25c yard.

99-inch bleached sheeting of a standard make; 75c yard.

Bleached sheets; 81x90. Make of good quality sheeting; will launder and wear well; \$1.49 each.

Utica sheets under name of Oneida, 81x99. A very popular size. These sheets have oil marks that will come out in the washing; \$1.95 each.

BOWMAN'S—Second Floor.

**Women's Black Stockings 23c**

Women's light weight cotton stockings with garter top and reinforced heel and toe. A first grade stocking in black only; 23c pair.

BOWMAN'S—Main Floor.

**New Fall Line of**



Full and varied line of fall stock has just been received. The quality and value of materials in Royal Society are maintained under all conditions, creating a standard of excellence that insures beauty and service through usage and laundering. Every package contains the stamped article, to be embroidered, in various designs and colorings.

Crochet and embroidery cottons of highly mercerized, twists in coarse, medium and fine.

BOWMAN'S—Second Floor.

**A Special Sale Of  
Women's White Silk  
Hosiery 98c Pair**

Full fashioned, medium weight silk with flexible lisle top and lisle foot. Seconds but good ones. An opportunity to buy good quality stockings at a low price of 98c pair.

BOWMAN'S—Main Floor.



**Lingerie**

**The New Blouse Fashion**

The summer fashions have brought nothing smarter and at the same time daintier than the new lingerie blouses. Many are lace trimmed and others with dainty frills and pleating.

Of special interest at this time is a dainty French voile blouse with pleated bosom and rows of frilling and with Tuxedo collar and turned cuffs frilled to match. A smart blouse and excellent value at \$5.95.

Other blouses in voile, organdie and dotted Swiss, all beautifully trimmed with embroidery tucks or fancy lace at \$2.98.

And a full line of cool summer blouses in tailored and dressy models, priced very moderately.

BOWMAN'S—Third Floor.

**Notions of Every Sort**

When you start out to purchase the materials for the making of those new garments you have been planning to make for yourself and for the children, do not forget while you are about it to supply yourself well with the many little needables you will require to have at your elbow while you are plying the needle to the fabrics.

Our notion department is well equipped to provide you with needles, thimbles, threads of all kinds, hooks and eyes, braiding and taping, buttons of all colors, sizes, shapes and designs, tape measures, etc.

Below are a few reminders and at the prices that are normally moderate.

Snap fasteners, 5c, 10c and 12½c; hooks and eyes, 5c, 8c, 10c and 12½c; button moulds, 5c bunch; needles, 12½c package; thimbles, 5c; tape measures, 5c, 10c, 25c and 40c; J. and P. Coats cotton, 5c; Belding Brothers' spool silk, 7c; bias binding, 10c to 30c bolt; white cotton stay binding, 10c to 25c.

BOWMAN'S—Main Floor.

**Bathing Suits**

These new bathing suits are unusually smart and simple of line. Included are many interesting one and two-piece effects for the woman who is partial to swimming. For the woman who prefers style distinction there are charming models fashioned of taffeta, satin, Jersey, in plain and combination color effects. Smart bathing hats with brims and snug fitting skull caps and bathing shoes. Suits range from \$2.50 to \$19.50; Caps, 15c to 98c.



BOWMAN'S—Third Floor.

**Children's Socks 25c**

Children's mercerized lisle socks in plain colors and white with fancy tops; offered at reduced prices of 25c pair.

BOWMAN'S—Main Floor.