

AUTOMOBILE NEWS AND ADVERTISING

AUTOMOBILE SECTION

SATURDAY, JULY 19 PAGES 8-9-10-11

ALFRED P. DAVIES, Auto Editor

AUTO CO. GETS BIG CONTRACT

Eight Hundred and Fifty Reos to Be Sold During 1919-20

The contract made last week by George G. McFarland of the Harrisburg Automobile Company, with the Reo Motor Car Company, for 850 passenger cars and roadsters and three-quarter ton trucks realizes an investment of approximately one million six hundred thousand dollars.

most the largest contract entered into by the Reo Motor Car Company in the United States. That the Reo people can fulfill this contract is possible by the fact that they have over five million dollars worth of material in hand at Lancaster, Pa., and have purchase orders for advance material that average over a quarter million dollars a month.

PERSPECTIVE OF BUILDING THAT IS BEING ERECTED AT MARKET AND CAMERON STREET BY THE SELDEN TRUCK DISTRIBUTORS



The above cut shows the perspective of the new building that is in the course of construction at the corner of Market and Cameron streets. This building is being erected by the Selden Truck Distributors and will be used and as a garage and storage building as well as the aileeroms for accessories and cars.

MANY COSSACKS DIE OF TYPHUS

Red Cross Finds Deplorable Conditions in Kuban

Paris, July 19.—A cossack herdman from the eastern corner of the Black Sea, in high astrakhan cap and faded long coat, recently wandered into American Red Cross headquarters in Paris. He had sold everything he owned in order to meet the expense of a journey across Europe to tell the Red Cross that the Cossacks of Kuban were dying of typhus.

complete equipment for a five hundred bed hospital, 1,500 tons of drugs and 1,500 tons of clothing. Ten Red Cross officers and fifteen American Relief Administration workers make up the unit, which will establish a hospital and distribute the supplies, with the full authority of the de facto government of the Kuban republic.

HAD A NECK The Knut—It's simply absurd! What's the use of showing me low cut collars like these? Do you mean to say that you keep nothing taller! Shop Girl—I'm sorry, but our next size is cuffs.—Casell's Saturday Journal.

Motor Trucks of Proven Ability Sanford Day-Elder

We are the distributors for both these trucks. They are the leaders in their class—stand up to any test you can give them in any line of business. We will gladly tell you how.

MONN BROS.

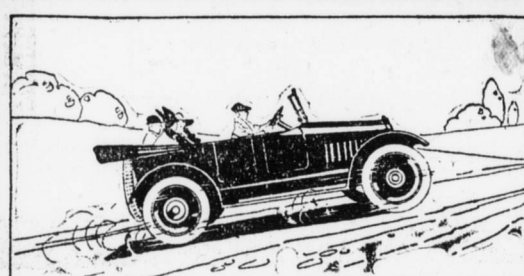
Star Garage 123 S. Thirteenth St.

ROWE WORM DRIVE TRUCK

Before you buy any truck stop in at the Sunshine Garage and investigate this wonderful truck. Built up to a standard that assures real service under all conditions. 2 to 5 ton capacity—solid or pneumatic tires; 2 1/2 ton special—8-cylinder. Tired with giant pneumatics.

SUNSHINE GARAGE

J. L. RIGGIO, Prop. 27 N. Cameron St.



Hill Climbing Ability

is often a matter of good carburetion. Sometimes you see a large fine car forced to take the easiest hill in low, while a smaller low-priced car sails merrily up on high.

RAYFIELD CARBURETOR

will give your car hill climbing ability along with more speed, more power, greater efficiency, and a saving of 15 to 30% in gasoline bills. The saving will pay for the carburetor in a short time.

Drive around tomorrow and see us about it. We can tell you in detail just what a Rayfield will do for you.

Federick's Garage

1807-09 NORTH SEVENTH ST.

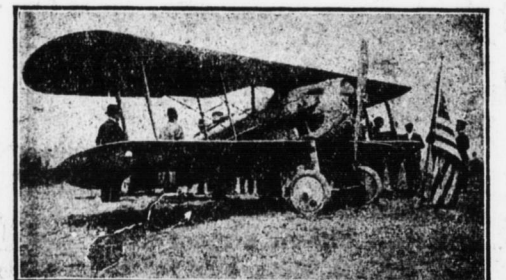
Distributors General Automobile Repairing American Six Service Station

P. S. There are special models for the Buick, Dodge & Ford.

10,000 Feet in the Air

And soaring around like a bird

Ever feel that thrill, that desire to conquer the air, to fly among the clouds? Birdmen say it is the most thrilling accomplishment of their lives.



Flying is the coming sport, the coming business. From every angle there are unlimited possibilities. For pleasure and for commerce the aeroplane is fast taking its place.

Trained Flyers and Mechanics Are Badly Needed and Are Making Big Money

There are thousands of mechanics now making from 5 to 10 dollars an hour. Flyers make 10 dollars an hour and it is easy to become an expert.

We Give You a Practical Course

both in general mechanics and in flying. We teach you all that is required to become an expert. Lesson given every day. Get more complete information by calling at our training quarters and inspect the machines we have there.

We have calls every day for Trained Automobile Mechanics, who are offered 75c to \$1.00 an hour; but we are unable to supply the demand. Why don't you get Expert Training, so that you can make some real money?

Automobile and Aeroplane Mechanical School

Offices: 9 North Market Square, Harrisburg, Pa.

Training Quarters: 260 South Front St., Steelton.

Who Has Right of Way on City Streets?

A large number of motorists in this city appear to be unfamiliar with the law as to who has the right of way at street intersections. City Council Ordinance No. 33, session of 1918-1919, the latest traffic ordinance passed, says, "Vehicles shall be under control at all times, and particularly at intersecting highways; and at intersections the vehicle approaching to the right of any driver or operator shall have priority to proceed."

This new law eliminates the one that appears to be most familiar among motorists, viz. motorists traveling north and south bound streets west of the P. R. R. and east and west bound streets east of the P. R. R. have the right of way.

FRANKLIN WINS BET IN LONG RUN

Crosses State and Returns in Less Than Twenty-Four Hours

By covering the distance between Pittsburgh and Philadelphia and return, 244 miles, in actual running time of twenty hours, with the entire round trip made within a twenty-four-hour limit, a Franklin car has won a \$2,000 wager for its owner, C. F. Mason of the Mason Oil Co. of Pittsburgh. The race was one of the most novel motor flights against time recorded in that section in several seasons. No tools were carried in the car.

Mason recently purchased a used Franklin car, which had been driven about 5,000 miles. He spoke so often and so enthusiastically of its splendid performance that H. A. Friday of the American Sales Co. of that city, happened to overhear him remark that the car would make the round trip between Philadelphia and Pittsburgh in twenty-four hours.

Friday said he doubted it—doubted it \$2,000 worth, in fact. Mason was brim full of confidence and the bet was on. The only stipulation made by Friday was that the long distance sprint should be made immediately. Mason agreed to this and next persuaded a friend, J. M. Eyer, a prominent insurance man of that city, to drive the car for him. Eyer had made the round trip before and was familiar with the roads.

The Franklin, a four-passenger roadster with winter top, left Pittsburgh at 7:40 p. m. with three passengers. Philadelphia was reached at 8:10 a. m. Eyer checked in at a Philadelphia newspaper office at hurried breakfast and started back, arriving in Pittsburgh at 5:10 p. m.

Instead of being tired, Eyer offered to wager \$5,000 he could repeat the performance without rest, so fresh was he at the end. The total time consumed was twenty-two hours, two hours within the bet. The average speed of the car was thirty-two miles and the gas mileage was 20.7 per gallon. The car weighed 1,900 more than the standard Franklin touring car, the weight coming from the passengers and the winter top. The run was made without preparation of any sort and the only extra equipment carried was a ten-gallon can of gasoline. The only hardship encountered was when Eyer discovered that the car previously had been in a slight accident that tipped the headlights so they illuminated the tree tops rather than the road. Not having tools or other equipment, he drove with the road in the dark rather than stop to straighten the lamp brackets.

The above interesting demonstration of an automobile's ability to travel such a distance without mishap or any out of the ordinary incident has created much comment among motorists in general, who have become familiar with the trip, says L. Veibley, local Harrisburg dealer for Franklin cars, and to back up the ability of the Franklin to do things that are real demonstrations of a car's efficiency, he further quoted the recent record made by a Franklin car when it climbed Mount Rimrock in nine minutes, in a United States Government official test. The official report states: "The Franklin climbed Mount Rimrock in nine minutes. The park was reached without once stopping, although some of the grades were 30 and 35 per cent. "No water-cooled car has ever reached the peak of Mount Rimrock without stopping once or oftener on the way up to let the motor cool."

Japan to Place Warships in the South Sea Region

Tokio, July 19.—In connection with the control of the Caroline, Marshall and other South Pacific islands entrusted to Japan by the Peace Conference, the Japanese government is contemplating the organization of a special squadron of warships to be stationed in the South Sea region.

Digest of the New Motor Vehicle Law of Pennsylvania, Act No. 283 Approved June 30, 1919

Registration—The system of registration is the same as in the Act of July 7, 1913, but includes bicycles operated by a motor attached thereto. The making of any misstatement in application constitutes a misdemeanor.

The owner of a motor vehicle must notify the Highway Commissioner of any change of address within one week.

Limit and Weight—Commercial vehicles cannot exceed— Limit—Length of 336 inches. Width of body or load of 90 inches. Combined weight of chassis, body and load of 25,000 pounds.

Special permits may be secured for a limited period for the transportation of special loads exceeding size or weight limit.

Registration Plates—Registration plates must be rigidly attached to the front and rear of the motor vehicle, so that they cannot swing or oscillate. (Plates swinging on straps are in violation of the law.)

The rear plate must be illuminated at night and must not be under the rear end of the body more than 12 inches. The lower edge of the rear plate must be at least 15 inches above the ground. The plates must not be covered or obscured in any way and must be kept clean and not be altered, bent or defaced. If a plate becomes defaced or disfigured, it is the duty of the owner to at once apply for new plates.

Motorcycles and motor cycles must display plate on the rear. It must be illuminated at night and attached so that the number is parallel to the ground and so as to comply with all the requirements for other motor vehicles.

It is prohibited to operate any motor vehicle with any other plates than those issued for it, and the use of altered or false registration plates constitutes a misdemeanor. Fine, \$200 to \$500; imprisonment 1 year.

Upon the transfer of ownership of a motor vehicle, its registration terminates and it is the duty of the owner to remove the registration plates and to notify the State Highway Commissioner within 48 hours of the name and address of the purchaser. The original owner may have his registration transferred to another vehicle upon payment of a fee of \$1.00, if it is of the same or less horsepower, or of \$1.00 and the difference in rate if it is of greater horsepower than the old one.

If one or both plates should be lost or stolen, it is the duty of the owner to make application for new plates within 48 hours.

Dealers' Plates—Plates issued to Manufacturers or Dealers can be used only on cars owned by them and operated by them or their employes for the purpose of demonstrating to a prospective purchaser or for testing or removing from storage place or place of shipping or delivery before or after sale.

The use or permitting the use of such plates for any other purpose is prohibited.

Non-Residents—Non-residents of Pennsylvania are granted reciprocal privileges, that is, are granted the same privileges that are granted to Pennsylvanians by the State in which they reside, but commercial vehicles owned by non-resident individuals or foreign corporations are restricted to one round trip per week, unless registered in Pennsylvania.

Fees—The change in fees does not go into effect until January 1, 1920, after which date the fee for passenger cars will be 40c per horsepower with a minimum fee of \$10.

Commercial vehicles with a chassis weight of less than 2,000 pounds pay on a horsepower basis.

Chassis weighing 2,000 lbs. to 3,000 lbs.	\$ 20.00
Chassis weighing 3,000 lbs. to 4,500 lbs.	25.00
Chassis weighing 4,500 lbs. to 6,000 lbs.	30.00
Chassis weighing 6,000 lbs. to 7,000 lbs.	50.00
Chassis weighing 7,000 lbs. to 8,000 lbs.	75.00
Chassis weighing 8,000 lbs. to 10,000 lbs.	100.00
Chassis weighing 10,000 lbs. and over.	150.00
Trailers, less than 500 lbs., no charge.	
500 lbs. to 750 lbs.	2.00
750 lbs. to 1,000 lbs.	5.00
1,000 lbs. to 2,000 lbs.	10.00
2,000 lbs. and over	15.00

The fee for a motorcycle is \$3.00. For a bicycle with motor attached, \$2.00.

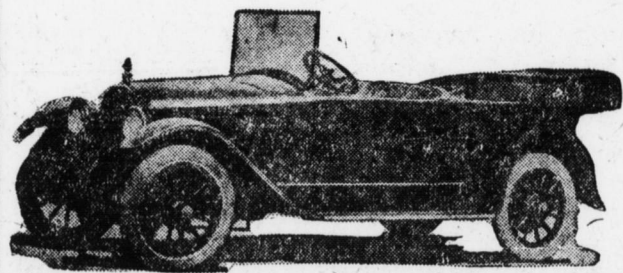
The fees for motor vehicles and trailers equipped with metal tires are double those listed above.

One-half the above rates are charged for vehicles registered after August 1.

The fees for registration are in lieu of any other fees or taxes imposed by the State or any subdivision thereof, and any local fees or taxes are prohibited except in the case of motor buses operated in cities.

Free Registration—Registration plates are issued free of charges for

[Continued on Page 10.]



AMERICAN SIX



Every American bears the personal O. K. of Louis Chevrolet on the inside of the dash—it is your guarantee of supreme quality.

Satisfaction in the ownership of an automobile depends upon the riding qualities, the appearance and the economy in operation.

All three of these qualities are to be found in a large number of cars on the market to-day, but none to such a marked degree as in the American Six.

The American Six is the last word in motordom. Its looks are instantly appealing, its riding quality is superb and its economy will satisfy anyone. It is truly a balanced six.

American Auto Company

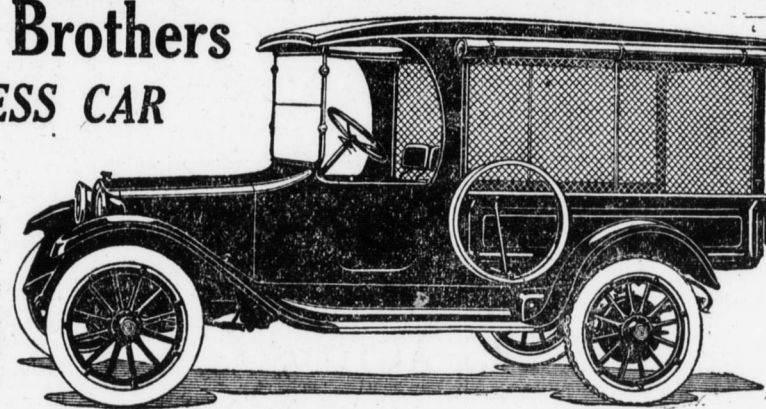
SALES DEPT. State and Cameron Sts. Penn-Harris Taxi Garage. SERVICE STATION 1807 N. Seventh St. Federick's Garage.

OFFICE

Penn-Harris Taxi Company, Stand Penn-Harris Hotel.

Dodge Brothers BUSINESS CAR

The ideal Delivery car at the ideal price—economy and service in every line—a car you should surely investigate before deciding.



Keystone Motor Car Co.

Bell 709 C. H. BARNER, MGR. Dial 57 S. Cameron St. Harrisburg, Pa.

You Can Load Your Old Bus Full of Good Luck Symbols, But—

If Your Tires Are on the Verge of Collapse, They Won't Do You a Bit of Good

Many motorists place a lot of confidence in luck—especially where their tires are concerned. Stone blisters, cuts and bruises are regarded as a few of the little things that are all in a day's run. Of course they won't blow out; oh, no. We'll just let them go; they won't cause any harm. But blooey, away they go and it always happens out in the country miles from a garage.

Vulcanizing or Retreading

those same stone bruises or cuts in time would not only have saved the tire but would have saved the owner a few dollars. "A STITCH IN TIME SAVES NINE." But many a motorist doesn't figure that way about his tires. It may be possible that he wouldn't think of starting on a trip with only a gallon of gas in the tank, but he would start out with poor tires. And then he is sure to run into trouble.

The thing to do is to have your tires inspected by an expert and if they have cuts or bruises in them, have them repaired at once. It is not only cheaper to do that but saves a multitude of trouble, work and worry. Try it once.

We Are Experts in Vulcanizing, Retreading and Repairing

BLACK'S GARAGE

205 S. Seventeenth St.

Bell 655

Of Course We Will Call