

STORE CLOSSES
SATURDAYS AT SIX

Bowman's

HARRISBURG, MONDAY, JUNE 30, 1919

STORE CLOSSES
SATURDAYS AT SIX

DELL 1901-2356 UNITED

FOUNDED 1871

Women's White Hosiery

\$1.35 to \$4.00 Pair

White hosiery has the call for the hot summer days; they have good appearance and comfort. We have supplied our stock well for the white hosiery season and showing very attractive values—

Pure white thread silk mock seam stocking; \$1.35 pair.

Pure white thread silk full fashioned; \$1.50 pair.

Pure white thread silk lisle top and foot, full fashioned; \$2.15 pair.

Pure white thread silk lisle top and foot, full fashioned; \$2.50 pair.

Pure white thread silk lisle top and foot, full fashioned; \$2.65 pair.

All white silk with silk top and foot, full fashioned; \$3.00 pair.

All white silk with black clox, full fashioned, \$4.00 pair.

BOWMAN'S—Main Floor.

Men's Athletic

Union Suits, \$1.50

The Musing Wear athletic union suit is made for comfort and ease; no knit webbing at waist band causing discomfort. Made with fullness in back to allow freedom of motion. The Musing athletic union suit is slightly cool and comfortable. Made from plaid Nainsook in full size garments; \$1.50.

BOWMAN'S—Main Floor.

Women's Musing Union

Suits, \$1.75

A gauge weight mercerized lisle union suit of Musing make. A practical garment for present season made with band top, sleeveless and shell knee; regular size, \$1.75; extra size, \$2.00.

BOWMAN'S—Main Floor.

Comfort, Service And Style In Children's Shoes

The Bowman shoe department has earned for itself an enviable reputation for fitting children's feet and for having an exceptional fine assortment of pumps, oxfords and high shoes for little children and the growing girls of the age who rapidly acquire a taste for neat footwear.

The shoes are made by one of the best manufacturers of children's shoes. We carry the narrow widths as well as the wide ones.

A separate section of the shoe department is devoted especially to children's shoes and we invite mothers to come in and compare the qualities and prices. We are sure she will find the prices as low as can be found anywhere and quality as good.

Pumps

Black Calf Pumps
Sizes 6-8 \$2.50

White Cloth Pumps
Sizes 8½-11 ... \$3.00
Sizes 11½-2 ... \$3.50
Sizes 2½-7 ... \$5.00

Patent Colt Pumps
Sizes 6-8 \$2.75
Sizes 8½-11 ... \$3.50
Sizes 11½-2 ... \$4.00
Sizes 2½-7 ... \$5.50

Oxfords

Tan Calf Oxfords
Sizes 8½-11 ... \$4.25
Sizes 11½-2 ... \$4.75
Sizes 2½-6 ... \$6.00

Black Calf Oxfords
Sizes 8½-11 ... \$4.00
Sizes 11½-2 ... \$4.50
Sizes 2½-7 ... \$5.75

Patent Colt Oxfords
Sizes 8½-11 ... \$4.00
Sizes 11½-2 ... \$4.50

White Cloth Oxfords
Sizes 8½-11 ... \$3.50
Sizes 11½-2 ... \$4.00
Sizes 2½-7 ... \$5.25

Barefoot Sandals

Sizes 6-8 \$2.25
Sizes 8½-11 ... \$2.75
Sizes 11½-2 ... \$3.25

High Shoes

Tan Calf Lace Shoes
Sizes 8½-11 ... \$5.00
Sizes 11½-2 ... \$5.95

Black Calf Lace Shoes
Sizes 8½-11 ... \$4.00
Sizes 11½-2 ... \$4.95

Patent Leather Button Shoes
Sizes 6-8 \$2.95
Sizes 8½-11 ... \$4.00
Sizes 11½-2 ... \$4.95

White Cloth Lace Shoes
Sizes 8½-11 ... \$3.50
Sizes 11½-2 ... \$4.25

Genuine White Buckskin Lace

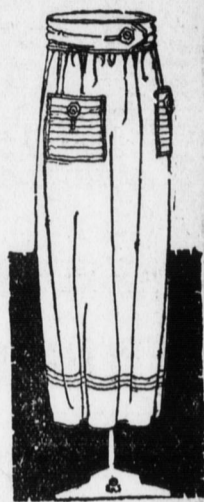
Sizes 8½-11 ... \$5.50
Sizes 11½-2 ... \$6.25

BOWMAN'S—Main Floor.

Mel-O-Cloth The New Skirt of the Suede

Finish

The most fashionable and newest of all materials. We have these skirts in only two styles, the one has the large side pockets trimmed with self covered buttons, while the other style has only small side pockets trimmed with self covered buttons. The colors are taupe, mode and beaver. Straight full skirt with wide tucked belt finished with tailor stitching. 25 to 30 waist band; \$16.50.



BOWMAN'S—Third Floor.

Luncheon Sets

For the Picnic On the 4th

Or for any outing during the summer, of blue-bird, daisy and Jap designs, round or square; \$1.50 to \$2.25.

Pillow and scarfs to match, of linen with scenery designs. Very appropriate for the cottage or porch—scarfs, \$1.25; pillows, 79c.

Stamped jewel cloth scarfs, 45 inches and 56 inches; \$1.25 and \$1.50.

Sample of any of the above can be seen on a visit to the Art Department.

BOWMAN'S—Second Floor.

Children's Union Suits

For The Summer Season

A light weight fine cotton union suit for children, sleeveless, trimmed and knee length. A garment for durability; 65c and 75c.

BOWMAN'S—Main Floor.

Strap Purses, Special 79c

A good assortment of strap purses; both top and back strap in a variety of colors. Few of these are fitted with a mirror; Special. 79c.

BOWMAN'S—Main Floor.



Bathing Suits

In Charming New Effects

Hundreds of Harrisburg women who purchased their bathing suits here last summer are telling their many admiring friends where they were purchased. The styles and values we give in bathing suits have built for us what we believe is the largest department of its kind in this section of the State. We endeavor to keep new ones coming in as quickly as those on hand go out. This keeps the assortment complete throughout the season.

You will find here bathing suits as simple or elaborate as the wearer desires, whether you prefer them for beach promenading or for battling with the surf or a cool dip in the Susquehanna.

Bathing Suits in all wool worsted heavy satin and taffeta; with or without sleeves in black and striped trimmed in white while others are trimmed in colors; belted slip-on and side closing, \$9.50 to \$14.50.

Wool jersey, silk and cotton jersey and mixed jersey of blue, green, purple, rose, black, gray, red, orange, without sleeves trimmed with pretty stripes and plain colors of contrasting shades; one piece, and a few of the smock effects, \$2.50 to \$12.50.

All striped jersey trimmed with plain shade, plain tights, belt and arm shields, \$12.50.

Water wings, \$1.50.

Shoes both low and high; white, red, green, blue, purple and black, 75c to \$1.25.

Fancy caps in pretty styles and colorings, 15c, 25c, 35c to 85c.

Satin bathing hats of black and white, red and white and blue and red, \$2.98.

Satin tams of black and white, red and white, and blue and red, \$2.50.

Rubber bathing bags of good quality, with two small pockets on the inside,

69c.

BOWMAN'S—Third Floor.

Fashion Weaves Charm Into The Beautiful New Blouses For the Fourth and Vacation Days

Bright summer days, and especially holidays and vacation days make a woman realize how important it is to have a supply of beautifully fine, cool-looking blouses. Pretty, charming styles in Lingerie blouses, the ultra smart in Over-blouses and other colorful creations designed in delightfully different modes, so that every occasion may have its blouse.

The Bowman Blouse department is one of the largest and most complete in this section of the State and every modern facility for displaying them most convenient makes it a pleasure to inspect them and choose to the best advantage.

We quote simply a few of the many blouse models most in demand for the holidays and vacation.



Sporty

The Ninette, \$6.95

Square neck model with Tuxedo collar and dainty lace edging on cuffs and collar of fine Val. with tucked cuffs at \$6.95.

The Petite, \$7.95

In cool, collarless styles, with three-quarter-length sleeves; dainty tucks and trimmed with soutache braid; \$7.95.



Ninette

Dainty

Petite

The Dainty, \$12.95

A silk net blouse with fichu collar, dainty turn-back cuffs, lace trimming with pearl button on front; \$12.95.

The Sporty, \$5.95

A sport smock of pongee, with round neck, crochet button trimming and sash to complete the waist line; \$5.95.

All that can be desired in dainty French voile, organdy and batiste, in tailored styles and the dress, can be found in our stock of washable blouses; \$1.98 up.

BOWMAN'S—Third Floor.