

AUTOMOBILE NEWS AND ADVERTISING

AUTOMOBILE SECTION

SATURDAY, JUNE 28 PAGES 8-9-10-11

ALFRED P. DAVIES, Auto Editor

Riding Comfort Fire Talk No. 6

By George G. McFarland

"The matter of inflation," says some one, "is very simple; just pump 'er up and let 'er rip." And frequently, all too frequently, that is what some body does, and very often "she" does rip. But the thing that rips is the inner tube.

resiliency, though the latter is finally depended upon construction and innateness. Other things being equal, it is better for the strain of the load to fall upon the tire than upon the springs; for if air was ever intended to do anything in this world outside of being the medium that people breathe, it was surely intended to furnish a cushion on which automobiles might the more easily ride. If you inflate a tire to 70 pounds pressure and put a load of 500 pounds on your machine, you will find that it runs more smoothly than if you reduce this load to 700 pounds, since up to a certain limit a heavier load promotes comfort, just as the modern low-slung, close-to-the-street trolley car is very superior to the older high-built, loose-sounding rattle-trap. The heavier burden causes greater deflection of the tires against the ground and increases the action of the side walls, both of which allow the increased vibrations to be absorbed by the tire rather than by the spring.

Table with 3 columns: Rim, Tire, Proper Oversize. Lists various tire sizes and their corresponding oversize measurements.

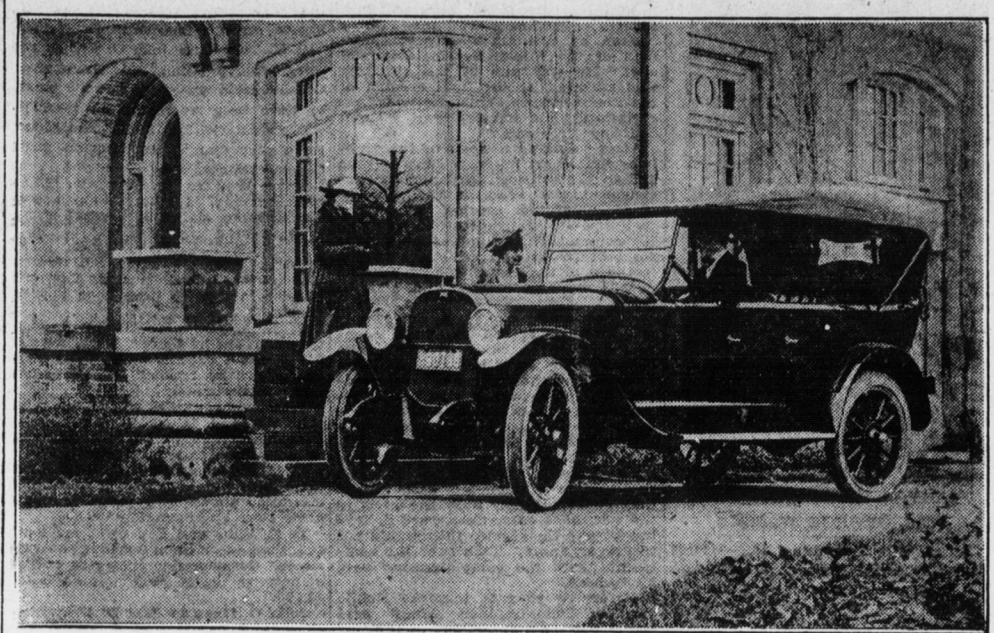
(To be Continued next Saturday.)

Jersey City, N. J., has a claim to fame, rules the Automobile Blue Book. The great Colgate soap and soft-soap factory within its bounds is surrounded by an electric clock of such gigantic size that it may be seen for miles in the surrounding country. It is larger than Big Ben at Westminster in London, larger even than the great clock in the Metropolitan Life Tower in New York City. Its dial measures 38 feet in diameter and the minute hand, which weighs almost one-third of a ton, must move 23 inches every minute.

"Calamity Jane," whose fame is sung by a popular cartoonist (we have our doubts about his vocal talent, but, as the saying is), selected Tavewy, Wyoming, as her weeping grounds for a number of years. "Big Nose George," noted holdup and train robber, was lynched here after killing a sheriff and his deputy, "Optim Bob" and Bob Lacey, two more holdups, were shown no partiality and paid the same penalty one night at the stock yards. This dimmed Rawlins' popularity in "stage struck" circles, popularizes the Automobile Blue Book.

According to the Automobile Blue Book, Buffalo Bill claimed that in 1872 the country in the North Platte vicinity was the greatest big game hunting ground in America. It was from North Platte that he, Grand Duke Alexis of Russia and General P. H. Sheridan went on their memorable buffalo hunt in January 14, 1872.

NEW SERIES CHANDLER TOURING CARS SHOW MANY ADVANCED LINES; SEVERAL HAVE ARRIVED IN HARRISBURG IN LAST WEEK



The new Chandler touring car, which has just been introduced to Harrisburg by Andrew Redmond, local distributor, surpasses its immediate forerunner in beauty of line, in bigness, in the compactness of its construction, in the nicety of its custom-like workmanship and its lustrous finish.

Its broad cowl and its wide and deep doors give it a distinctive appearance. The back curtain window is beveled plateglass. The clear-vision side curtains fit snugly and open with the doors. There are detachable rear quarterbow curtains. There are outside door handles.

senger roadster, with its striking new design of high hood and radiator, bids fair to surpass even its own previous record of popularity. Public demand for this model has increased steadily; evidencing so keen an approval of its commodious and graceful body design that no alteration of seating arrangement has been made.

VETERAN OF ELEVEN TRIPS IN MOTOR CAR TELLS GASOLINE TOURISTS HOW TO MAKE TRIP

Cautions Owners About Condition of Car Before Starting; Allows 23 Days to Span Continent; Average Cost \$110 Per Passenger; Condemns Speeding

By RAY McNAMARA Road Engineer, Maxwell Motor Co.

Some of the reasons why Ray McNamara is qualified to advise motorists: He has driven 325,000 miles since 1903 — farther than any man in America. Has never had an accident. Has never been arrested for speeding. Has driven a car from ocean to ocean 11 times. Holds worlds one day touring record of 803 miles.

more true of the Santa Fe trail than of the others. The Lincoln highway or central route is undoubtedly the most popular and the more travelled trail of all, as it follows a more densely populated section of the country. Starting from the Atlantic coast there are three well travelled routes. The New York and Boston routes come together at Albany then via Utica and Syracuse to Buffalo. Another very desirable route from New York goes by way of Binghamton and Elmira and joins the above route at Buffalo then via Erie and Cleveland to Chicago. The Lincoln Highway from New York is in excellent shape. The only poor roads are from Pittsburgh to Canton, Ohio.

The following story of a recent seasonal interest to motorists, especially those contemplating long trips, was secured from the Maxwell factory at the special request of The Miller Auto Co., Inc., local Maxwell dealers.

The advice and directions given by Ray McNamara are by a man that knows every inch of territory between the Atlantic and Pacific. While the starting point is New York and San Francisco the terminus, the figures quoted are equally applicable on the trip going in reverse direction.

"In comparing the costs of a trip from New York to San Francisco by rail with a similar trip by automobile I believe it would be a fair estimate to say that it would be 33 per cent cheaper to travel by motor car.

Railroad fare including berths and meals for four persons would amount to about \$650. The average expense per person would approximate \$162.50. These figures would apply to four men going direct from coast to coast without stopovers. A sample expense account follows: Garage bills, \$14.00 Hotel for four persons, 138.00 Meals for four persons, 207.00 Gasoline figured at 30 cents per gallon, 67.00 Oil figured at 1 gal. for every 200 miles, 15.60

Total cost for 23 days of touring, \$440.40 Average per person about \$110.00 If a drummer had to make the same schedule by rail it would cost about double this amount. By travelling direct without stopovers the trip can be made easily at 200 miles per day in the summer time. This would reduce motoring costs on hotel garage and meals to a very small amount. But it is advisable to take your time. It is always better to give the roads a chance to dry up before starting unless you are accustomed to driving over wet dirt road. This applies particularly west of Chicago.

If further information is desired in the form of road logs, equipment to be carried, advice as to the best stopping off places etc., The Miller Auto Co., Inc., local dealer will assist you in securing additional data.

Flip--Flap-- Flip--Flap--

Ever hear that noise a; an automobile is passing? Yes? Well, that's caused by the tread being loose on one of the tires and evidently the owner doesn't know that by having that same tire

RETREADED

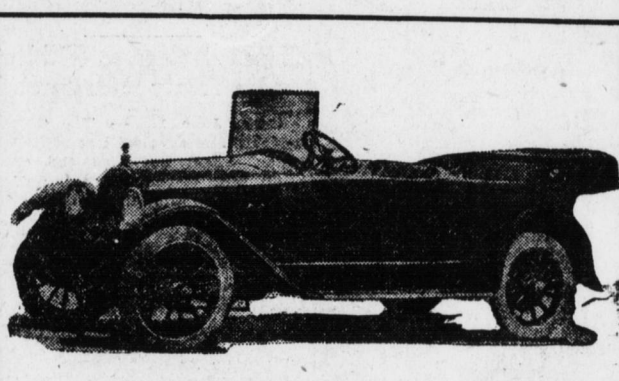
he can save himself the price of a new tire. Having a tire retreaded is the one sure way to get many more miles of service from it and to save a good many dollars.

RETREADING VULCANIZING REPAIRING

Satisfaction Guaranteed BLACK'S GARAGE 205 S. Seventeenth Street

RETREADING AND VULCANIZING

A complete equipment for all kinds of retreading and vulcanizing work, together with first class mechanics and materials, enable us to assure you the utmost in these lines. We guarantee perfect work. Let us show you. We Sell Every kind of tire equipment Goodyear — Firestone — Goodrich Tires Dauphin Tire Service Co. 206 N. Second St. Harrisburg



AMERICAN SIX

Satisfaction in the ownership of an automobile depends upon the riding qualities, the appearance and the economy in operation. All three of these qualities are to be found in a large number of cars on the market to-day, but none to such a marked degree as in the American Six. The American Six is the last word in motordom, its looks are instantly appealing, its riding quality is superb, and its economy will satisfy anyone. It is truly a balanced six.

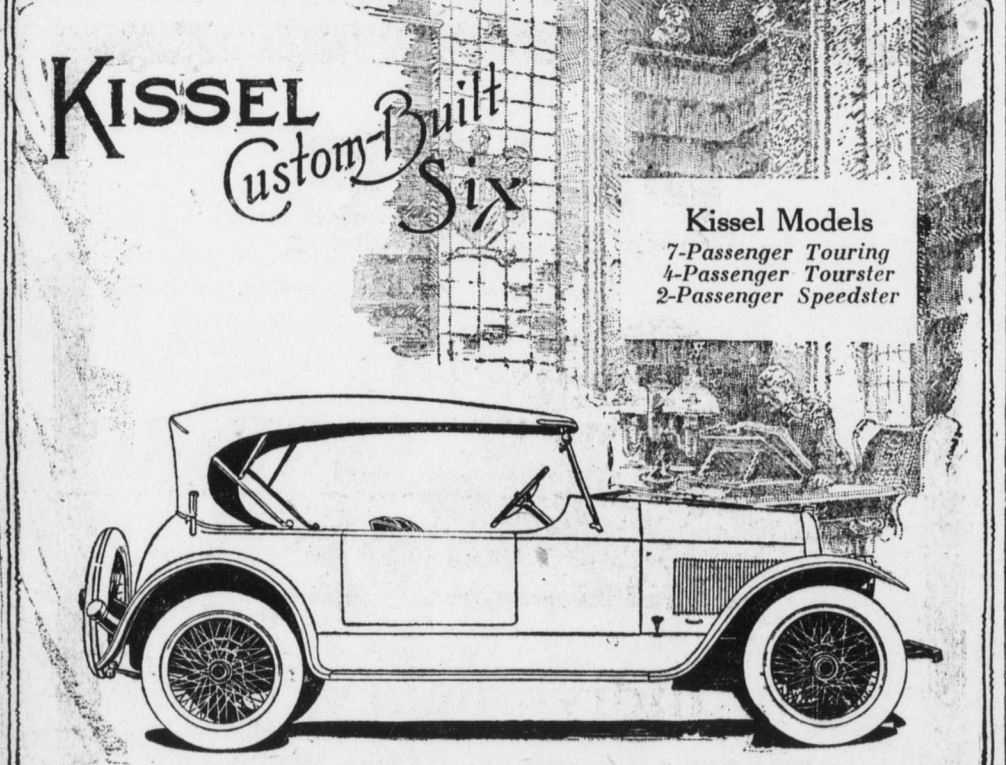
American Auto Company Sales and Service Rear Second and Forster St., Bell 2850-J. Harrisburg Dial 6954.



IT'S THE POWER

that gets you out of tight places; an instant get-away is essential to safety. Probably you would not have had that accident if you had installed A RAYFIELD CARBURETOR. If your motor lacks the power and pep it used to have, install a Rayfield. It will knock that sluggishness out of your motor, create a mightier power and cut your gas bills at least 15 to 30 per cent. Drive around and see us about it. We can tell you in detail just what a Rayfield will do for you.

Federick's Garage 1807-09 NORTH SEVENTH ST. Distributors General Automobile Repairing Hupmobile Service Station P. S. There are special models for the Buick, Dodge & Ford.



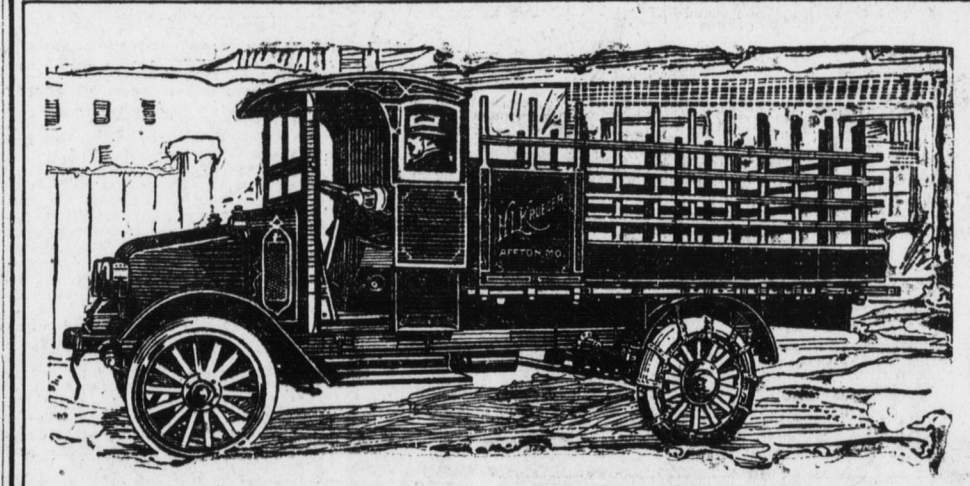
As You Would Build It

WERE you to build your ideal car you would first inspect the cream of Europe's designs at the salons—view the best efforts of leading coachmakers—visit the nation's exclusive automobile showrooms, looking for an automobile that possesses the best features of all the custom-made motor cars.

With thirteen years of advanced engineering progress, construction standards and body-building innovations back of him, Kissel set about to produce a strictly custom-built car, combining in one model all the chassis and body features which the motor connoisseur would demand if he himself were designing a car for his own use.

The result—the new Kissel custom-built models—now awaiting your inspection at our salesrooms.

Literature on request. M. BRENNER & SONS MOTOR CO. Third and Hamilton Streets HARRISBURG, PA. BELL 4945 DIAL 4441



Ask an Owner

A MOTOR TRUCK represents an investment in hauling equipment. The truck that does the work year in and year out at the lowest cost proves to be the best investment. Ask any owner of an International Motor Truck and he will tell you the International cuts the cost of hauling down to the lowest practical point.

International first cost is low because of quantity production. Quality is maintained at a high standard because every important part of the truck is manufactured and each truck assembled in one great factory under centralized supervision. Every lot of material of every kind is subjected to the most rigid tests, and unless it passes those tests it is discarded. No inferior material or workmanship gets into

International MOTOR TRUCKS

These things are done because the International Harvester organization is building not alone for the present but for the future. We want every International Motor Truck owner to feel that he has the best truck he can buy and to be able to prove it at any time by any fair test that can be suggested or proposed.

Some day you will buy a motor truck. If you are the kind of a man that is not satisfied with anything but the most economical truck for hauling and delivery work, drop us a line, call up, or come in and see us. The more you know about motor trucks, the quicker we can convince you that the International is a mighty good truck to own. There is a style and size to meet almost every hauling requirement.

Crispen Motor Car Co. Salesroom 103 Market St. Service Station 27 N. Cameron St.