

Musical Foundation Created by Juilliard May Have \$20,000,000

New York, June 28.—Friends of A. D. Juilliard, the merchant, whose will bequeaths the residue of his vast estate to further the art of music in America, said today that the Juilliard Musical Foundation created by the terms of the will may have at its disposal as much as \$20,000,000—the largest gift ever left for music in this country.

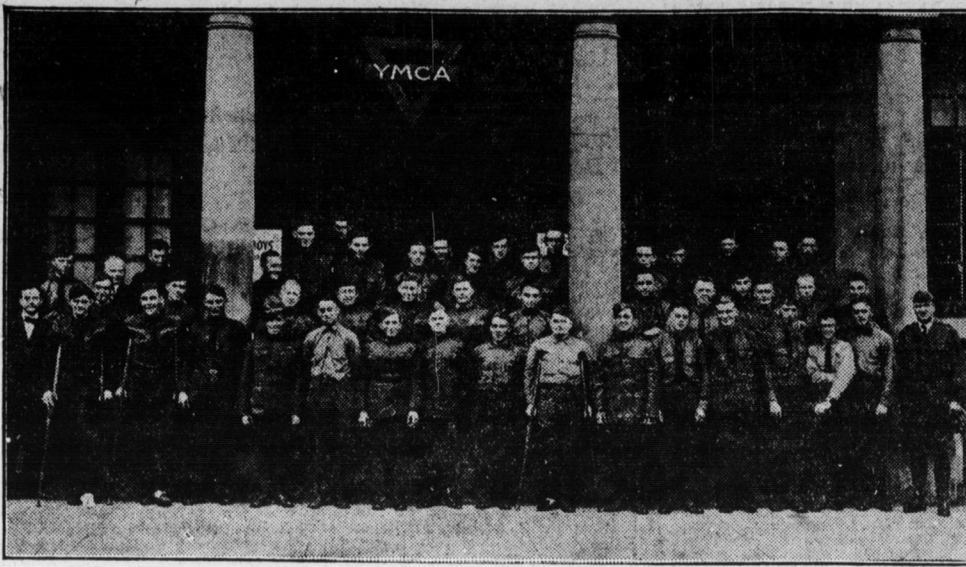
The purpose of the foundation to be created according to the terms of his will is to help worthy students of music, educate them either here or abroad, give entertainments for the

Five O'clock to See Big Exhibition Game at West End Today

At Fourth and Seneca Streets this afternoon at 5 o'clock West End and Engineers and Firemen hook up in a battle for a show which does not count in club standing. Both teams are on edge to put up a star battle just as though fighting for title.

education and diversion of the public and to assist the Metropolitan Opera Company in the production of operas.

Y. M. C. A. ENTERTAINS WOUNDED SOLDIERS



BASEBALL RESULTS NATIONAL LEAGUE Yesterday's Results

Table of baseball results for the National League, including scores for Cincinnati vs Pittsburgh, Chicago vs St. Louis, Brooklyn vs Philadelphia, Boston vs New York, and Philadelphia vs Boston.

AMERICAN LEAGUE Yesterday's Results

Table of baseball results for the American League, including scores for Detroit vs Cleveland, St. Louis vs Chicago, Philadelphia vs Washington, New York vs Boston, and Washington vs Athletics.

SCOUT COUNCIL WILL MEET TUESDAY EVENING A meeting of the Boy Scout Council will be held Tuesday evening at 8.15 in Trinity parish house.

SWATARA WINS; NEW TEAM JOINS

Big Crowds Attend Junior League Games at Nineteenth and Greenwood

Table showing the standing of the teams in the Junior League games, including East End, Swatara, St. Mary's, and Hygienic Jrs.

Swatara again defeated East End last evening by a 3 to 1 score at Nineteenth and Greenwood streets. Swatara pounded Hildebrand hard, while Shearer only allowed East End two scratch hits which netted only one run.

Four of the strongest junior teams in the county are now in the City Junior League race and larger crowds are starting to gather at the grounds at Nineteenth and Greenwood streets every evening.

Scoreboard for the game between East End and Swatara, listing individual player statistics such as hits, runs, and errors.

SWATARA AT PALMYRA TO-DAY The Swatara nine is booked to go to Palmyra to-day to meet the Palmyra High school Swatara players on the following list are to report at the Reading station in order to catch the 1 o'clock train: Shearer, Kurtz, Matter, Ellenberger, Layton, Sharon, Nicky, Young, Motter, Kirby and Hocker.

Contract Let by State For Building of Road in Upper Dauphin County State Highway Commissioner Lewis S. Sadler to-day awarded three contracts for road improvements in Dauphin, Lancaster and Blair counties.

THE LANCASTER COUNTY CONTRACT went to the firm of Claiborne, Johnston Company, Inc. of Baltimore, at their low bid of \$162,029.84.

THE PROJECT CONSISTS OF 21,566 feet of reinforced construction on State Highway Route 136, extending from a point near the village of Rafton southward to the Providence township line and also from the end of an improved road south of New Providence to the Quarryville borough line.

THE CONTRACT FOR ROAD CONSTRUCTION in Blair county was awarded to the Standard Construction Company, of Altoona, at the low bid of \$19,879.85.

THIS WORK IS LOCATED IN HOLLIDAYSBURG borough, where approximately 1,269 feet of reinforced concrete roadway will be built. The width of this roadway is to be thirty and one-half feet.

Arrest Communists For Hamburg Uprising

Berlin, June 28.—The independent Socialist and Communist members of the executive council of the greater Berlin Soviet were arrested Thursday night by order of Minister of Defense Noske. They are charged with having been in collusion with the leaders of the uprising in Hamburg.

THREE TRANSPORTS ARRIVE

New York, June 28.—Nearly 7,500 troops arrived here to-day from French ports. The Aquila, from St. Nazaire, arrived in the harbor shortly after sunrise with 3,354 soldiers on board and she was followed by the Santa Paula, also from St. Nazaire with 2,903 and the Santa Rosa from Bordeaux with 1,961.

Playgrounds Schedule For Boys' and Girls' Ball Games

J. K. Staples, superintendent of city playgrounds, yesterday completed the schedule for the boys' playground ball and the girls' long ball leagues. The schedule follows: Boys' Playground Ball July 2—Twelfth street at Maclay, Emerald at Boas. July 3—Reservoir at Sycamore. July 7—Boas at Rely, Emerald at Reservoir, Sycamore at Twelfth street. July 10—Twelfth street at Boas, Emerald at Maclay, Rely at Sycamore. July 14—Boas at Reservoir, Sycamore at Emerald, Maclay at Rely. July 17—Maclay at Reservoir, Sycamore at Boas, Rely at Twelfth street. July 21—Reservoir at Rely, Boas at Maclay, Twelfth street at Emerald. July 24—Sycamore at Maclay, Twelfth street at Reservoir, Emerald at Maclay. Girls' Long Ball 'A' July 1—Penn at Boas. July 3—Maclay at Rely, Hamilton at Emerald. July 8—Boas at Hamilton, Rely at Penn, Emerald at Maclay. July 10—Penn at Hamilton, at Rely. July 11—Maclay at Boas, Emerald at Rely. July 15—Rely at Boas, Hamilton at Maclay, Penn at Emerald. July 22—Maclay at Penn, Boas at Emerald, Rely at Hamilton. Girls' Long Ball 'B' July 2—Paxtang at Sycamore, Reservoir at Twelfth street.

July 9—Sycamore at Harris, Twelfth street at Paxtang. July 15—Harris at Reservoir, Twelfth street at Sycamore. July 18—Reservoir at Paxtang, Harris at Twelfth street. July 22—Paxtang at Harris, Sycamore at Reservoir. The hour for starting all games has been set at 7 o'clock and the records of the games will be kept in order to determine a league standing. The players of the various teams must be under 19 years of age on the opening day of the league.

MILLER AUTO COMPANY

Mammoth Sale of Used Cars and Trucks

Positively Must Be Sold Before July 1

In order to "clean house" at our service station, we are offering our entire stock of used cars and trucks at exceptionally low prices. This sale started a few days ago and there are still several cars left, including

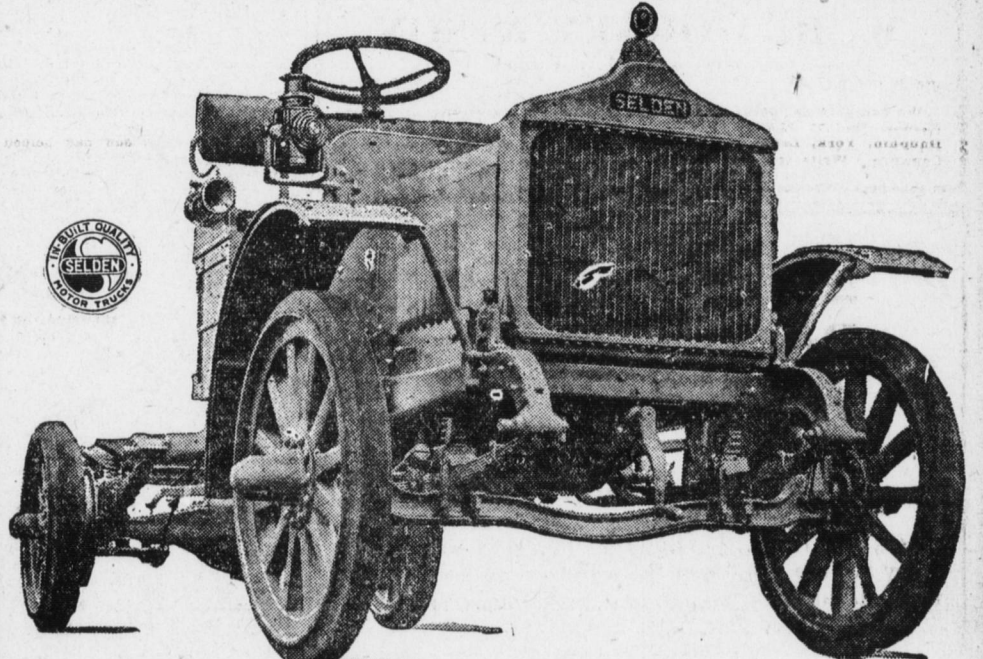
- Passenger Cars: 3 Maxwell Touring, 1 Reo Roadster, 1 Willys-Knight Touring, 1 Mitchell Roadster, 2 Pullman Touring, 1 Overland Touring. Trucks: 1 3/4-ton Buick Truck, 1 2 1/4-ton Bethlehem, 1 3/4-ton Republic.

These cars are all in good running condition. You must positively be satisfied if you buy or we will give you your money back. If you do not have all the cash to pay down, convenient time payments can be arranged.

Salesmen to Wait on You at All Times. Open Evenings THIS IS YOUR OPPORTUNITY FOR A REAL BARGAIN

MILLER AUTO COMPANY, INC.

50 to 68 S. Cameron St. HARRISBURG



The New 1 1/2 Ton WORM Drive SELDEN SPECIAL at \$2185

Meets the Hauling Needs of To-day

To meet the present-day need for a moderate-priced 1 1/2 ton truck of the same rugged construction, the same great powers of endurance, of the same design and built on the same sound engineering principles as the other models in the Line of SELDEN TRUCKS, we offer the SELDEN SPECIAL Model at \$2185. Manufacturing facilities, greatly enlarged during the war to meet the demands of the United States and allied governments for Selden Trucks, enable our factory to standardize production of this model to such an extent that we can sell the SELDEN SPECIAL at a price far below its value. Wherever there exists a need for haulage of 1 1/2 tons capacity, the SELDEN SPECIAL will render highly efficient and profitable service. These specifications of this remarkable achievement in motor truck manufacture are proof that only the highest quality units obtainable enter into its construction—which is your assurance of long, uninterrupted service at low operating cost.

SELDEN TRUCK DISTRIBUTORS

1017-25 Market St. Harrisburg. We Have a Fully Equipped Machine Shop and Can Give You Immediate Service on All Repair Work.

Selden Motor Trucks

DUPLEX TRUCKS Cost Less Per Ton-mile

Duplex Lowers Hauling Costs

Owners' records show that the Duplex-4-Wheel Drive Truck lowers hauling costs from 20 to 60 per cent.

The records were compiled on Duplex performance in comparison with horses and mules and other trucks.

Everywhere the Duplex proves that it lowers ton-mile costs.

And the Duplex goes through loaded where a two-wheel-drive truck would stall empty.

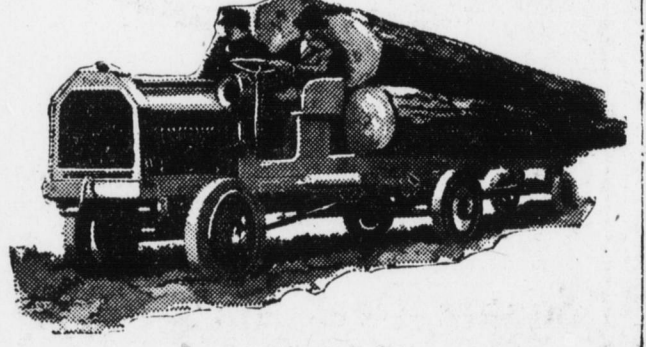
The Duplex drives with all four wheels and the self-locking differential makes certain that it will pull itself so long as one wheel has traction.

The double reduction gear drive enormously increases the power when called on in an emergency.

We ask businessmen to allow us to demonstrate the Duplex and to look over owners' records.

HARRISBURG AUTO CO.

Fourth and Kelker Sts. Harrisburg, Pa. DUPLEX TRUCK COMPANY, LANSING, MICH.



It Is Economy to Drive This Quality Car

You get better service, greater satisfaction and enjoy exclusive advantages in addition to having a sound investment of lasting value

Lexington MINUTE MAN SIX

THIS perfected Touring Car represents the most advanced motor car achievements, new-style design, up-to-date improvements, proven mechanism, together with exclusive features that make it efficient, comfortable, and of long-lived service— All at a moderate cost.

It is made for five passengers, but there are two folding auxiliary seats in the tonneau. The front seats are individual, with an aisleway between. The curtains, when not in use, are folded in an envelope suspended neatly above the tonneau. This Minute Man Six includes many

items ordinarily listed as extras, even on the most expensive cars.

Ten large factories, devoted exclusively to automobile parts, are affiliated with and contribute to this car. Therefore its greater value is possible for less money.

Our exclusive Moore Multiple Exhaust System prevents dead gas from choking the engine. Your little finger will operate the emergency brake.

One hundred separate parts have been eliminated in the frame, making it non-rattle and solid. Come and see for yourself.

C. E. DENNIS, Distributor

Sales and Service: 121 South Third Street, Harrisburg, Pa. Sub-Agencies Open in Counties Adjoining Dauphin County. Investigate

Lexington Motor Company Connersville, Ind. U. S. A.

Bigger Worth A Bear for Wear



Gillette Chilled Rubber Process. Guaranteed. Fabric 6,000 miles. Cord 8,000 miles. Solid 10,000 miles.

YOU'VE probably often thought that somebody some time would produce Tires and Tubes that would leave no complaint as to costs. You were right. That time has arrived.

The discovery of how to produce greater Tires and Tube resistance and strength has been made. It is the Gillette Chilled Rubber Process—the perfected method. Toughens rubber as from its toughness by changing to steel—building up endurance and bringing down costs to the lowest figures of economy.

Absolutely the biggest worth—in service—in mileage—ever offered Tires and Tube buyers. One Gillette is bound to sell you a set.

P. H. Keboch, 111 Market St. Bell 4638

Gillette Tires and Tubes