

AUTOMOBILE NEWS

TIMELY LOCAL FEATURES OF INTEREST TO AUTOISTS

BY ALFRED P. DAVIES, AUTO EDITOR.

REO PRODUCES MOST TRUCKS IN U.S.A.—SCOTT

Statement Issued by the Vice President Gives Many Facts

According to a statement just made public by R. H. Scott, vice president and general manager, the Reo Motor Car Company is now the largest truck producer in the world. Mr. Scott's statement, which is based upon the official figures for the first quarter of 1919, comes as a surprise to those who have not watched closely the progress which the Reo company has been making in the manufacture of trucks. Mr. Scott also indicates that the Reo Motor Car Company is planning an increased production both of passenger cars and trucks for the next fiscal year. The text of the statement follows:

"Based on the official figures for the three months ending March 31, 1919, at the present time Reo Motor Car Company is producing more trucks for commercial uses than any other truck manufacturer in the United States—with the possible exception of Ford, whose figures are not available. I make this statement with full knowledge of the statements in the advertising of other manufacturers that they are the largest truck producers. Official figures furnish the indisputable answer.

"This achievement represents to us the vindication of a principle. When we first presented a truck whose outstanding attributes were pneumatic tires, speed and complete electrical equipment, the judgment of Mr. Thomas, our Chief Engineer, was freely questioned by buyers and competitors alike. Within the past year the correctness of our principle has been eloquently acclaimed by countless imitations, and to-day the principle has been even more eloquently acclaimed by the ultimate judge—the truck user himself—as the production figures for the first quarter of the year clearly prove. We manufacture but a single model; but with that one model we are building more trucks than any other manufacturer—whether he has one or a dozen models.

New Liberty Garage at Sixteenth and Walnut Streets, Used by Kirk and Ochs as the Cole Liberty and All American Truck Service Station



The above illustration shows the new Liberty Garage, at the corner of sixteenth and Walnut streets, formerly the Russ Bros. ice cream plant, that has been remodeled and turned into an up-to-date garage by Kirk & Ochs, local distributors for Cole, Liberty and All-American cars. The garage is not yet ready for occupancy, but work is expected to be finished in a very short time. The insert in the cut is that of the All-American Truck.

"I would not attempt to forecast the future. But this I will say. We shall not voluntarily relinquish the position of dominance we have thus acquired. To maintain that position, we must increase our truck output to keep pace with the constantly increasing demand—and even now our production is running more than 50 per cent. stronger than the record figures for the first quarter.

BUICK SALES AND SERVICE STATION TO MOVE SOON
Announcement is made to-day of the acquiring by George B. Zeck, of the salesrooms and service station

that is now occupied by the Miller Auto Company at Shaffer's Garage, 50 to 68 S. Cameron street. Mr. Zeck is the local Buick distributor and now has a service station at 25 S. River Ave., which has proved entirely too small to handle the large and growing business of Buick cars.

The Miller Auto Company recently purchased the Boyd Estate Building at the corner of Third and Locust streets and will move their salesrooms there in the near future. This left their old salesrooms open and Mr. Zeck immediately closed a lease for their occupancy. The Miller

Auto Company will still retain a large portion of the garage and will use it as a service station for their cars.

REDMOND GETS BACK CARDS THROWN FROM AEROPLANE

When Andy Redmond took his record breaking trip through the clouds during the recent Victory Loan celebration, he threw several three of which had a little story written on the back that imparted to the finder the fact that she should return the card to its original owner and receive a five dollar reward for the same. The cards, according to Andy were thrown out 'somewhere' between the river and the railroad and Market street and MacLay street. However, two of the cards have now been returned and both were found sticking to the bushes in Reservoir Park. One was found by a boy scout and the other by a little girl living on Park street.

Mr. Redmond intends to have those cards framed and keep them as a souvenir of the first trip he attempted in the air. Mind you, it was his first trip, for according to gossip, Andy is negotiating for the agency for a standard make of aeroplane.

C. A. FAIR INCREASES FORCE IN TOP DEPARTMENT

Owing to the heavy increase of business in the top and curtain finishing department at the C. A. Fair Carriage and Auto Works at the east end of the Mulberry street bridge, Mr. Fair announces that he has secured additional help to take care of the regular summer rush in this department. J. Spier, of Franklin county, a well known and experienced top maker has been secured and will report for work on Monday, June 2.

Work in all the branches of this firm have been so heavy this spring that many orders have been delayed to a certain extent. In order to increase the efficiency a larger force will be put on stock from a large number of truck bodies have been turned out this spring which testifies to the exceptional number of trucks that have been sold to business firms in the vicinity. This firm makes a specialty of building any kind of bodies according to specification.

CHELSEA AUTO WRECKING CO. DOING INCREASING BUSINESS

This spring has been a banner season at the Chelsea Auto Wrecking Company's big warehouses at 24-28 N. Cameron street. This firm makes a specialty of buying and selling used cars and parts. Demands for these parts has been augmented, due to the fact that it has been hard from any of the factories that makes machines. The parts that are sold by this firm are taken from machines that they purchase and are thoroughly inspected before being offered for sale. They have most of the stock from a spark plug for a 1920 Pearce-Arrow down to a tall light for a 1906 Oldsmobile.

HARRISBURG TO BEDFORD, VIA CARLISLE AND AMERSBURG	
0.0	HARRISBURG
1.0	Lemoine
2.0	Camp Hill
3.0	Hogestown
4.0	New Kingston
5.0	Balford
6.0	Carlisle
7.0	Stone Tavern
8.0	Centerville
9.0	Walnut Bottom
10.0	Lees X Roads
11.0	Shippensburg
12.0	Green Village
13.0	Chambersburg
14.0	St. Thomas
15.0	Port London
16.0	Cove Mountain
17.0	McConnellsburg
18.0	Harrisburg
19.0	Green Hill
20.0	Hans
21.0	Reamers
22.0	Mellvaine
23.0	Breezeewood
24.0	Everett
25.0	St. Das
26.0	The Willow
27.0	BEDFORD

DIAMOND GRID BATTERY COMPANY OPENS HERE

The Diamond Grid Battery Company have opened a sales and service station at 68 S. Cameron street under the management of L. G. Airmann, a well known local battery man. They will handle and make repairs exclusively on the famous Philadelphia Diamond Grid Battery. This battery has won considerable fame during the war, it being used in submarines and other electrical equipment of the army. One of the strongest claims for it is the construction of the plates. These plates are made electrically strong throughout the cross section of diamond grid construction.

LIBERTY BUILDS NEW FACTORY AT DETROIT, MICH.

First Sod Turned For Another Mammoth Motor Car Plant

The only wheels that turned at the Liberty Motor Car Factory last Tuesday morning were those of some hundreds of Liberty cars that carried the officials, employees, out-of-town dealers, and a score of enthusiastic Liberty owners out to the new factory site at Charlevoix avenue and Conners Lane to witness President Percy Owen turn the first sod in the breaking of the ground for the new plant. The ceremonies opened with the playing of the "Star Spangled Banner," after which J. E. Fields, the general sales manager of the Liberty Motor Car Company, acting as master of ceremonies, introduced as speakers the following men, whose names are all recognized as prominent in Detroit's motor car activities:

President Percy Owen; F. C. O'Meara, of the Michigan Manufacturer and Financial Record, one of the country's leading writers on industrial topics; Captain Gilbreath, manager of the Detroit Automobile Club; J. H. Cullen, of the Detroit Board of Commerce; and H. H. Estelstyn, Detroit Commissioner of Public Works.

The factory site for the greater Liberty plant comprises twelve acres. A railroad in the rear, and a siding at the east of the plant, give ample transportation facilities inside of the property limits. There will be three principal buildings and a factory power house. The lay-out and construction of the three principal buildings and the power house as well, will be as convenient and complete as modern design and construction methods can make them. The administration headquarters will front on Charlevoix avenue which is to be converted into a handsome boulevard. This building will be 50x200 in size, of brick colonial construction, and in appearance will resemble rather an up-to-date club house than a regulation office building.

One of the distinctive ideas for this building is a tower, modeled after that of Independence Hall, and which will contain a replica of the Liberty Bell instead of the conventional factory whistle.

On the first floor will be located all of the production offices and display rooms for the latest Liberty models. The second floor will house the executive and sales offices of the company. Among the conveniences on this floor will be the girls' rest room, and also the unusual feature of a men's smoking room as well.

Building No. 2 is located immediately behind the administration building. The building will house a service, experimental and closed

body mounting departments, as well as the officers' and employees' restaurant. The size of this building is sixty by three hundred and twenty feet.

Just back of it will be the main assembly building, which is to be 120 feet by 600 feet in size, a tremendously large building, which will give thoroughly adequate facilities for the production of Liberty cars. The power house will complete the new plant for the present, but all the buildings have been so designed that additions may be made as required. Cement driveways will run between the buildings, giving easy access and egress for all kinds of transportation. The loading platform from which Liberty cars are shipped to all parts of the world, is already erected and on use.

REDMOND TO OCCUPY NEW SALESROOM NEXT WEEK

The new salesrooms at the corner of Third and H. vinton streets that will be used by Andy Redmond as the salesrooms for Chandler Touring Cars and Vim Trucks has been vacated and will be ready for Mr. Redmond some time next week. This new salesroom is 65x25 feet and will be painted white on the inside and v. en decorated will present a most beautiful salesroom for these cars. Announcement will be made later as to the exact date Mr. Redmond will

DIES AWAITING HER BOY
Philadelphia, May 30.—Excitement over preparations being made for the expected arrival home of Lt. E. J. son, brought on an attack of heart disease which caused the death yesterday morning of Mrs. George E.

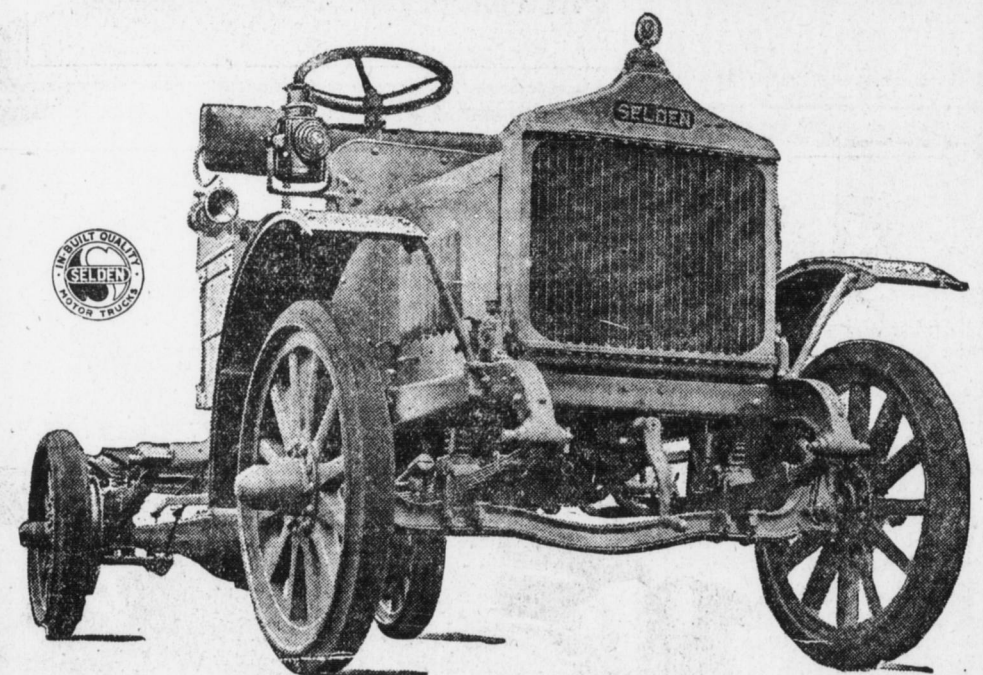
"Bill's" Garage
1801 Susquehanna St.
NOW OPEN
Ford Car Repairing a Specialty
ALL WORK GUARANTEED

Automobile and Aeroplane School Classes Day and Night



Learn a good trade—be independent. Place yourself in a position to be able to demand a good job anytime, anywhere. The demand for trained automobile and aeroplane mechanics far exceeds the supply.

Thousands of Trained Mechanics Wanted at Once
We train you thoroughly in a short time. Our courses are complete. A few hours a day in your spare time after you are through your regular work will make you an expert. Get complete details now.
FULL COURSE FIFTY DOLLARS
Call or Write, 25 North Cameron St., Harrisburg, Pa., or at Training Quarters,
260 South Front St., Steelton, Pa.
AUTOMOBILE AND AEROPLANE MECHANICAL SCHOOL



The New 1 1/2 Ton WORM Drive SELDEN SPECIAL at \$2185 Meets the Hauling Needs of To-day

To meet the present-day need for a moderate-priced 1 1/2 ton truck of the same rugged construction, the same great powers of endurance, of the same design and built on the same sound engineering principles as the other models in the Line of SELDEN TRUCKS, we offer the SELDEN SPECIAL Model at \$2185. Manufacturing facilities, greatly enlarged during the war to meet the demands of the United States and allied governments for Selden Trucks, enable our factory to standardize production of this model to such an extent that we can sell the SELDEN SPECIAL at a price far below its value. Wherever there exists a need for haulage of 1 1/2 tons capacity, the SELDEN SPECIAL will render highly efficient and profitable service. The specifications of this remarkable achievement in motor truck manufacture are proof that only the highest quality units obtainable enter into its construction—which is your assurance of long, uninterrupted service at low operating cost.

Ask us for complete specifications of the Selden Special.
SELDEN TRUCK DISTRIBUTORS
1017-25 Market St. Harrisburg.
We Have a Fully Equipped Machine Shop and Can Give You Immediate Service on All Repair Work.

Selden Motor Trucks

Willard SERVICE STATION
Copyright registered, 1919
25 N. MARKET ST. HARRISBURG, PA.
SEVEN S. RIVER AVE.
One Hundred Nine Market St.
Why We're Here
To help you get the right start with your new car—
To see that you are supplied promptly with the best battery built.
To charge your battery if it needs charge—to test it with the hydrometer—to supply you with distilled water—to repair batteries that have suffered from neglect or abuse.
Come in anytime. Ask as many questions as you like, but be sure to ask this one: "What is Willard 90-day Battery Insurance?" Remind us to hand you a copy of the booklet "Willard Service and You."

JORDAN

You cannot afford to carry extra weight

THE extremely light car of short wheelbase vibrates up and down. Its wheelbase also is short considering its weight, cannot escape the wear and tear of side sway. You cannot afford to carry extra weight. Yet who would sacrifice it at the cost of jerky up and down vibration? The Jordan Silhouette has banished both difficulties forever. It is the lightest car on the road for its wheelbase. Yet it possesses that peculiar balance which cannot be attained in cars weighing twelve to fifteen hundred pounds more—nor in extremely light, short cars. Its whole tendency is toward forward movement. It is a new kind of a car. And heralding the new, it has naturally marked the passing of the old. Picture the perfectly balanced chassis of finished mechanical excellence equipped with this new custom style all-aluminum body. Style—dash—individuality—and perfect riding comfort. Built in both four and seven passenger. Optional colors Brewster Green and Burgundy Old Wine.

REX GARAGE & SUPPLY CO.
1917 N. Third St. Harrisburg, Pa.
L. L. SHETTEL, Mgr. S. S. POMEROY, Pres.
JORDAN MOTOR CAR COMPANY, CLEVELAND, OHIO

THE ALL-AMERICAN SUPER-TRUCK

ONE TON

THINK \$1295!

Dealers Wanted
in the following counties: Franklin, Cumberland, Dauphin, Lancaster, Adams, Perry, Lebanon and York.

KIRK and OCHS
DISTRIBUTORS
Harrisburg Auto Tire & Repair Co. 131 S. Third St.
Liberty Garage 16th and Walnut Streets