

AUTOMOBILE NEWS

TIMELY LOCAL FEATURES OF INTEREST TO AUTOISTS

BY ALFRED P. DAVIES, AUTO EDITOR.

DIAMONDS USED IN PRODUCTION OF NASH CARS

\$50,000 Worth Are Used Each Year by Nash Motors Company

Fifty thousand dollars worth of diamonds are used each year in the production of Nash passenger cars and trucks. The diamond, regarded generally as a luxury is not so classified by the production department of the Nash Motors Company where it is looked upon as an essential and as such is held responsible for some of the most important machine operations that go into the various parts of the Nash Six.

The jeweler has developed for the diamond, settings that inspire admiration and for automobile storage, the jewelers have enshrined it with a halo of romance but the automobile manufacturer quick to perceive its more practical possibilities has literally put the diamond "in overalls" and set it to work.

Instead of its more familiar background of gold and platinum the diamond as seen in the Nash factory is "set" in a small socket at the end of a short and unromantic steel bar. Both diamond and "setting" are covered with grease and grime and in this unsightly but practical garb the "job" assigned to the diamond is the more or less prosaic though vitally important duty of regrinding the surfaces of emery wheels.

It is the emery wheel that is depended upon for the high degree of accuracy demanded in the Nash factory for bearing surfaces of the crank shaft, the cam shaft and for pistons, transmission sleeves and similar parts that must be smoothed so that the surface will not vary as much as a one-thousandth part of an inch. In the Nash plant are scores of wheels used for this purpose and each is manned by a highly skilled operator.

After each operation of the emery wheel the diamond is brought into play. Pressed against the spinning wheel the diamond is made to regrind its surface so that subsequent operations of the wheel on surface of steel parts will produce accurate results.

The diamonds used for this purpose by the Nash Motors Company

BLACK'S GARAGE, SHOWING THE NEW ADDITION ADDED TO TAKE CARE OF INCREASING BUSINESS



The above illustration shows the newly remodeled garage used by Black's Garage as a tire vulcanizing store and for automobile storage. Business has been increasing to such an extent that the old structure proved inadequate to the needs of the firm, which required the remodeling. A large room in the rear is used for vulcanizing purposes, while the front is used as an accessory store. It is located at 205 South Seventeenth street.

vary from three-quarters of a carat to eight carats in size.

STANDARD EIGHT AGENCY GOES TO TAYLOR & CO.

Chester Taylor & Co., located at the corner of Seventeenth and Derry streets, have been appointed distributors in Dauphin, Cumberland and Lebanon counties for the well-known Standard Eight. The Standard Eight bears an enviable reputation in many sections of the country and comprises a line of moderate priced cars that have many well-defined qualities. A car load just been received by this company and more are expected in a few days. At the present time only the larger models are being received here, but by the middle of July or the first of August, a lighter model is expected.

Chester Taylor Co. have been established here for some time, but have not handled a car until accepting the Standard agency. They have been operating a first-class repair station and are well equipped to take care of the service end of their new agency. Sales and service will be maintained from their garage at Seventeenth and Derry streets.

RECKLESS DRIVING IN CITY INCREASING

The many accidents and near accidents that have been occurring here in the past month attest to the increasing recklessness of many of the drivers of passenger cars and trucks. While the speed limit has been fixed by the council at twenty-four miles an hour, it is evident that many drivers are either unable to read their speedometers or do not care to drive within the limit. Speeding on an open road is dangerous at the best, but speeding in the city where there is such heavy traffic, both of machines and pedestrians, verges on the reckless. Scarcely a day goes by without a witness to a piece of reckless driving which might have resulted in the killing of several people. A second street car was going down town when nearing Verbeke street, two machines tried to pass. There were at least a half a dozen people waiting to board the car at the street intersection. Another street car was out to cut so close to the trolley car that it ran over the fender of the car. Had the car been going a little faster it is possible that the machine would have been thrown into the crowd.

Another bad street where accidents are numerous is Green street. At nearly every intersection, serious accidents have occurred due to the recklessness of drivers. There are many who use this street as a speedway, and many others cross it as though there was no intersection at all. It is nothing to see a machine crossing Green street going thirty miles and more an hour. This is decided recklessness for it is impossible to have a machine under control going that speed. The other evening an accident happened at the corner of Green and Kelker streets in which a machine going down Kelker from Third hit another car going down Green street with such force that the one machine was thrown clear over on the sidewalk on its side. It was claimed by a passenger of the car coming down Kelker street that the car was only moving eight miles an hour, yet it skidded more than thirty feet before hitting the other car and beside knocking it on to the sidewalk. Many motorists are able to stop their car within its own length when going but eight miles an hour, for that is little more than a walk.

It is high time that the police officials take a hand and curb this growing menace. Motor cars are becoming too thick to permit recklessness of this nature, and the sooner some one is shown up in the matter the better it will be for all concerned.

HOIN TO SELL LIBERTY AND COLE MACHINES

Kirk and Ochs, distributors for the Liberty Six, the Cole Aero Eight and the All-American truck have secured the service of C. E. Hoin, a well-known automobile man. Hoin will act as the wholesale representative in this territory for all three of the machines mentioned above, and will also be retail salesman in this city for the Liberty and Cole. He is well known in automobile circles having been connected with leading firms here for some time. He assumed his duties last week.

Has Plan to Rebuild His Own Parish

Worcester, Eng., May 24.—"My parish ought to be blown up. The only way to deal with it would be to put fourteen batteries of 5-inch guns on Malvern Hills, clear the people out and blow the parish to pieces, and then rebuild it, fit for man to live in."

That is how the Rev. G. A. Studert Kennedy, vicar of St. Paul's Church here, would proceed to secure better housing conditions, he told a large gathering in a theater of this city.

WANTED TO KNOW

The policeman pulled the man out from under the wreck and helped him to his feet.

"Are you the owner of this car?" he asked.

"No," replied the injured man. "I'm a demonstrator."

"And did you have to demonstrate that the car couldn't climb a tree?"—Boston Transcript.

A CANADIAN CRIME

Manitoba Free Press.—"Sentence of Mike Ancon, found guilty of house-keeping, was postponed yesterday afternoon."—Boston Transcript.

VIOLENS

American make, at very reasonable prices.

Yohn Bros.
33 N. 4th St.

KIRK AND OCHS AGENTS FOR ALL-AMERICAN TRUCK

Announcement is made that Kirk and Ochs, owners of the Harrisburg Auto and Tire Repair Company and the Liberty Six, have taken on the agency for the All-American truck. This truck is equipped with the Herschall-Spillman 4-cylinder motor, Dixie high-tension magneto, internal gear drive and artillery wheels. It is of one-ton capacity with a chassis weight of 2,300 pounds. It is equipped with pneumatic tires in front and solid tires in the rear, and has a wheel base of 130 inches. Any style body can be adapted to the chassis.

Sales and service will be maintained for this truck as well as for the Liberty Six, and the Cole Aero Eight and both the new Liberty Garage and at the Harrisburg Auto and Tire Repair Co., 132 South Third street.

SHERMAN, OUT OF SERVICE, REOPENS RADIATOR WORKS.

E. J. Sherman, the proprietor of the Auto Radiator works at 125 South Cameron street, who was inducted into the service more than a year ago, has been discharged and recently reopened his radiator works at the old location. Sherman had worked up a large number of customers before entering the army who will be glad to hear of his return. His shop is one of the best equipped in the city for this special work, and the mechanics are among the best. He has been in this business for a number of years, and is acquainted with practically every make of radiator on the market. Prompt service will be the byword at this shop and well as quality work.

PEERLESS CLIPS EIGHT-SECONDS OFF "RIM-OF-THE-WORLD" RECORD

A Peerless Eight driven by Charles Basle recently broke the famous "Rim-of-the-world" record at St. Bernardino, Calif. The course where this record is competed every year is eight miles long over a narrow road with endless curves up the side of the hills of the famous Waterman Canyon. The Peerless made the distance through heavy fog in 18 minutes and four-fifths seconds. This is eight seconds less than the previous record which has stood for more than two years.

DIDN'T HAVE TO TELL HIM

She was struggling with English; he the Irish sergeant with French. He had just rendered her a slight favor. "Mercy, bow coop," it sounded like to him. "Sure," he retorted, courteously, "an' ye didn't have to say coop to me, madamezelle. I know y'wuz chicken the minute I laid me eyes on ye."—Edinburgh Scotsman.

YOU SHOULD

FARMERS OF U.S. LARGEST USERS OF MOTOR TRUCKS

70,789 Motor Trucks Used in Hauling Farm Products During 1917

Ask this question of any average business man—"What branch of industry is the largest user of motor trucks to-day?" The business man feels confident that there isn't much room for argument here—the answer is too obvious. Who but the retail merchant can be the largest user? Just look at the big fleets of motor trucks operated by the large department stores of our cities and the innumerable individual trucks owned by the small merchant! The merchant must be the chief user. No? Well, then, the manufacturer, of course! (This with patronizing condescension) for if it isn't a merchant it must of necessity be the manufacturer. But—

he's wrong again.

The farmer of the United States is the largest user of motor trucks. The farmer of 1917 showed that there were 79,739 motor trucks engaged in hauling farm products at that time, topping the list. The manufacturers came second with a total of 75,928 motor trucks to their credit, and the retail merchant third with a total of 74,486. It is estimated that during 1918 approximately 350,000,000 tons of farm products were handled by motor trucks by the farmers and truck gardeners of the United States.

The motor truck has attained a place of such importance and prominence on the American farm that during the past year the United States Department of Agriculture conducted an extensive country-wide investigation to determine the practical value of the motor truck to the farmer. The results of this investigation were published in the Monthly Crop Report for October, 1918, issued by the United States Department of Agriculture. This report showed that the per ton mile cost of hauling farm products with motor trucks was in many instances less than one-half that of hauling with horse and wagon.

The specific figures indicating that the per ton mile cost of hauling wheat or corn with motor truck is 15 cents as compared to 30 cents and 35 cents, respectively, with horses. This is the average for the United States, the figures varying of course in different localities. The report shows that in the South hauling cotton by horse and wagon cost the planter 40 cents per ton mile, whereas he is now doing the same work with the motor truck at the nominal cost of 18 cents per ton mile.

Aside from its value as an economical transport unit for hauling crops, the motor truck is used very extensively for delivering live stock to the big packing plant centers. During the year of 1918, a total of 199,076 head of live stock were delivered to the South Omaha stockyards by motor truck. This total comprised 188,417 head of hogs, 5,848 head of cattle, and 4,811 sheep. Stock was brought in by farmers from distances up to 70 and 80 miles. Motor truck deliveries by farmers are being made on similar scale at all leading stock yards. A total of 575 motor trucks from the country loaded with livestock were counted in one day at Indianapolis last summer.

The reason for the popularity of the motor truck in this branch of farm transportation is quite evident when it is known that the livestock shrinkage saved by this method over horse and wagon or rail shipment amounts to enough, as a rule, to effect the cost of motor truck operation.

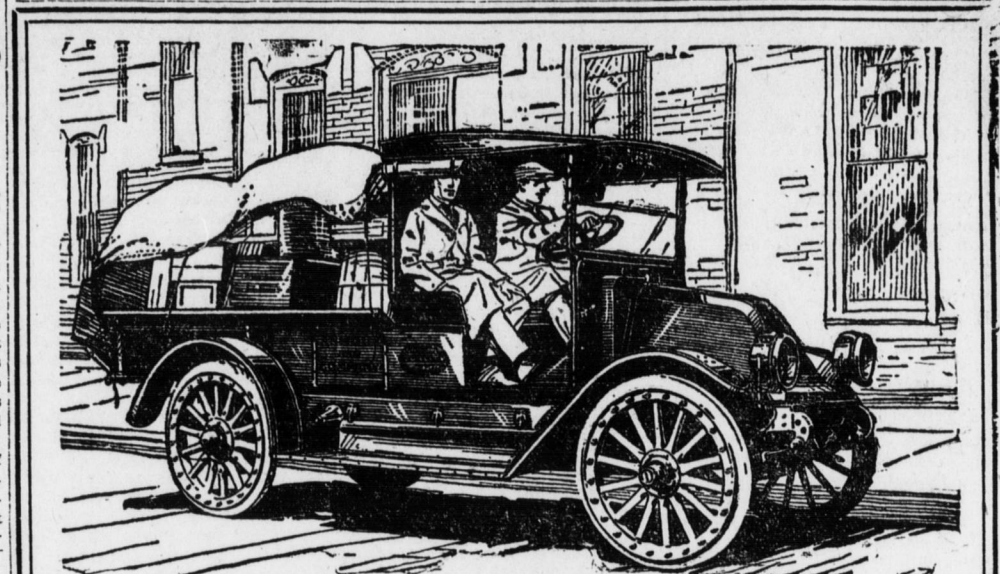
The most recent development in rural motor truck transportation is

the rural motor express. In Iowa alone there are 187 motor trucks operating on regular advertised schedules, serving the farmers along the routes covered. In Arkansas, one rural motor express concerns a route of 100 miles and hauls mail to twelve inland postoffices. The American farmer is the largest producer in the world, so it is only natural that he should be the largest motor truck user—his need for this form of transportation is greater than that of anyone else. And with the building and development of good roads he is bound to maintain the lead he has already gained.

FISHMAN MOTORS CO. TO OPEN NEW SALESROOMS

The Fishman Motors Company, local distributors for Paige cars, will open a new sales and service station as soon as it is completed in the Fishman Garage building at Fourth and Chestnut streets. The completing of this part of this large building was held up during the war for the lack of materials, but work is now being pushed on it to get it ready for occupancy as soon as possible. The entrance will be from the

bridge side at 110 South Fourth street. A large salesroom is now ready and will be used by this firm during the remodeling and completion of the entire second floor which will be used exclusively by the Fishman Motor Co. Edward Fishman is the manager of this firm and announces a strenuous campaign on Paige cars. Deliveries of these cars are expected any time. Service will be maintained at the new address for both old and new owners of Paige cars.



What Every Business Man Wants

LOW-COST Hauling—The average motor truck purchaser is not so much interested in how a motor truck is built. What really interests him is how much mileage he is going to get out of his truck for every dollar invested. International Motor Trucks have been built with this one feature constantly in mind, hauling the load the greatest distance with least expense.

A Motor Truck That Lasts—Every part of an International Motor Truck that is subject to wear is provided with a removable bearing or bushing. If these parts are replaced when worn, and the truck is given the care and attention that any high grade machine deserves, an International truck will last and serve for years. Years of service is what the business man wants and years of service is what he gets with the International.

Appearance That Adds Dignity to a Business—All other things being equal, customers favor the man whose equipment makes the best appearance. International Motor Trucks have that staunch and business-like appearance that inspires confidence in a business house and in the products it handles. They add an air of prosperity and dignity that proves a valuable asset.

A Real "Service to the Owner" Organization—There is an International Motor Truck of a size to meet almost every hauling requirement. We have a service and selling organization without an equal in this section of the country. Think what this means to you after you have become an owner. We are strong and the International organization is strong on "Service to the Owner," after the sale is made. Come in to our salesroom and see what we have to offer in trucks and service.

Crispen Motor Car Co.
Salesroom: 103 Market St. Service Station: 27 N. Cameron St.

DUPLIX TRUCKS

Cost Less Per Ton-mile

Duplex Always Wins In a Comparative Demonstration

All we ask of any business man is a chance to show the Duplex 4-Wheel-Drive in a comparative demonstration.

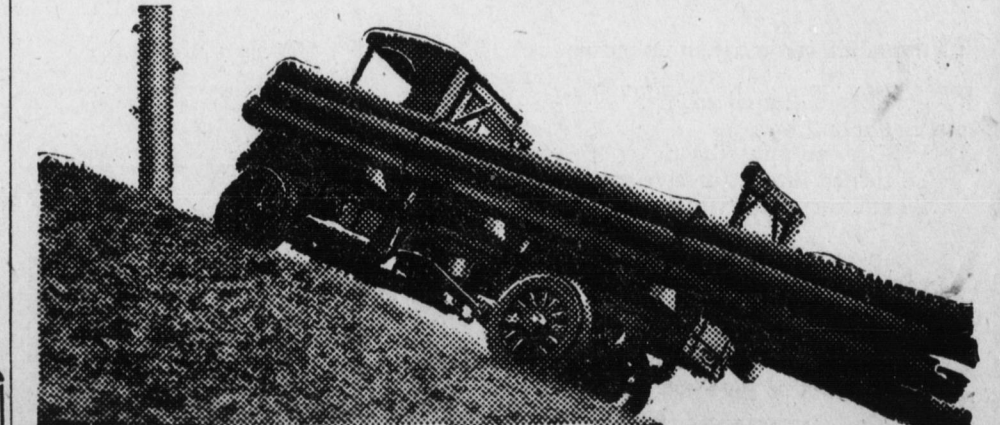
We know that the Duplex will out-demonstrate any rival under all haulage conditions. We know it will show a saving of 20 to 60 per cent. in ton-mile cost.

We know, because the Duplex is doing these things every day

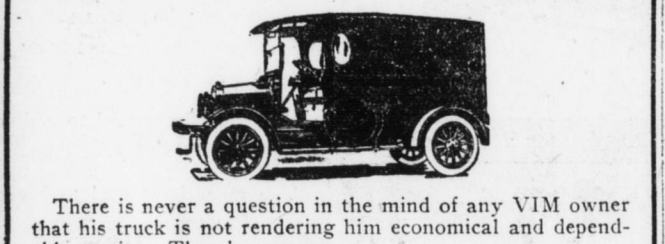
in a score of industries, in competition with other trucks and with horses and mules.

Therefore, we welcome the opportunity to enter the Duplex 4-Wheel-Drive in competitive demonstrations. A call will bring our representative with records of how the Duplex has lowered ton-mile costs for other business men.

Harrisburg Auto Co.
Fourth and Kelker Sts., Harrisburg, Pa.
DUPLIX TRUCK COMPANY, LANSING, MICHIGAN.



Further Your Business



There is never a question in the mind of any VIM owner that his truck is not rendering him economical and dependable service. There's a reason.

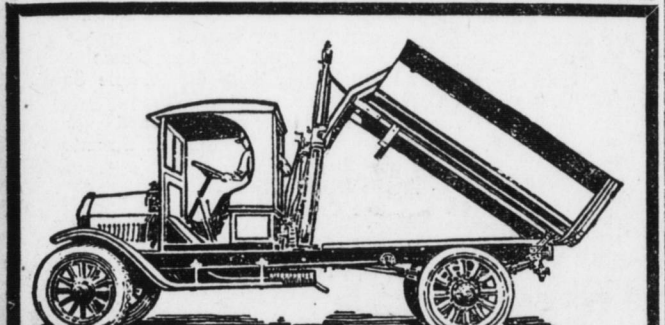
Vim Trucks

There are fourteen different body types on the VIM Chassis. It will fit your business. Let us tell you about it.



ANDREW REDMOND

Distributor
THIRD & REILY STS. Harrisburg, Pa.
Bell 2133 Dial 4616



GIANT MOTOR TRUCKS

Recent Purchasers of the Dependable

Henry Hirsch
Appleby Bros. & Whittaker
C. E. Coppedge W. J. Morton
N. C. Brandt and N. L. Kapp
David F. Floyd, Lancaster
Andrews Coal Co., Lancaster

G. E. COOPER & SON, HARRISBURG LUMBER CO.

The Giant has won a reputation, not through talk, but by merit. In competitive demonstrations the performance of the Giant has outclassed other trucks of the same rating.

It operates on mixtures of gasoline and kerosene and reduces operating costs by 50 per cent. It is the most economical truck on the market today. Made in 1, 2 and 3 1/2-ton sizes.

J. E. DARE
209 Chestnut St. or 17th & Chestnut Sts.